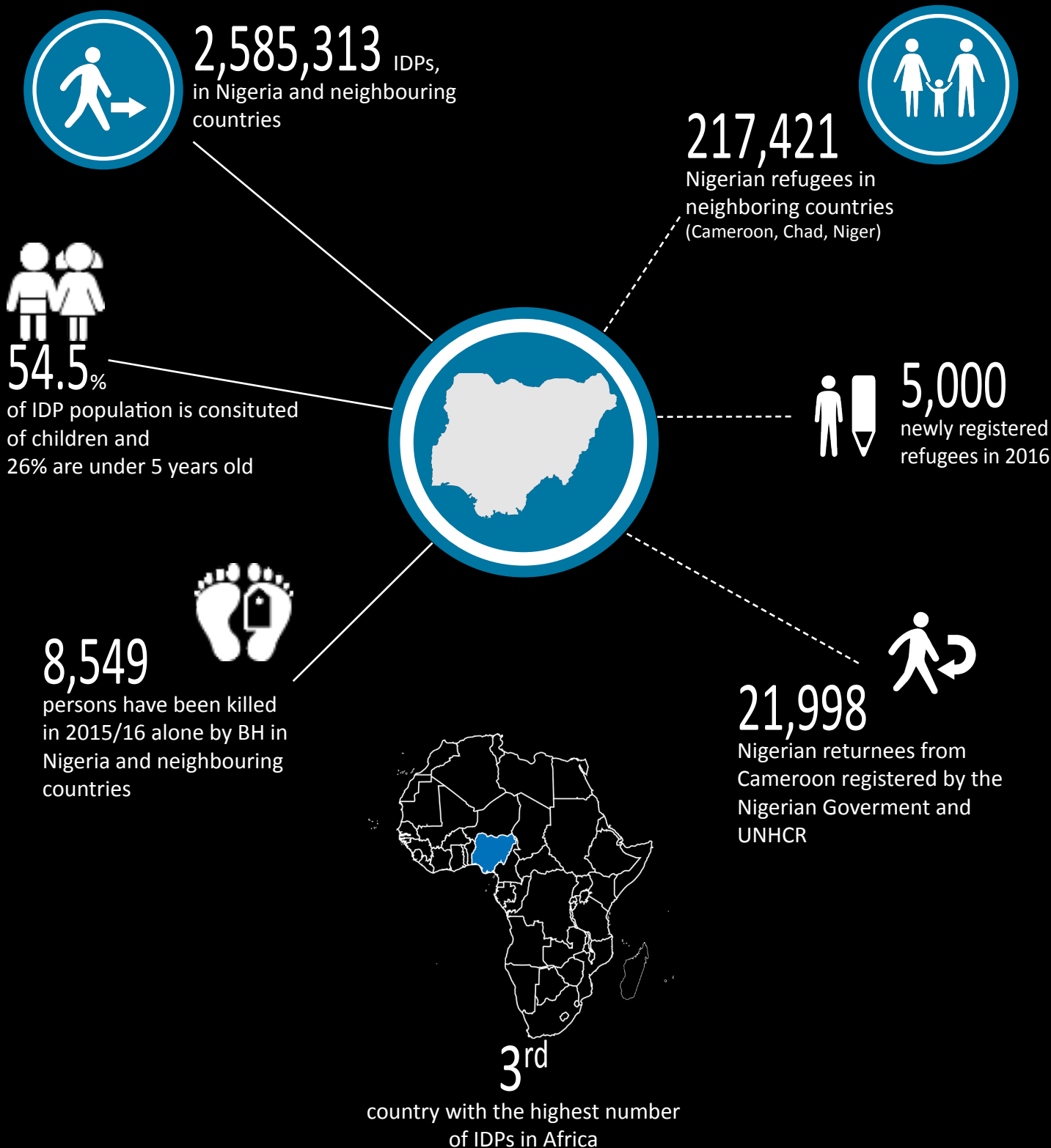


NIGERIA SITUATION IN NUMBERS

since 2012

March 2016



Source: UNHCR, ACLED, IOM DTM round VIII, IDMC.

For more information contact: **Liz Ahua**, Regional Refugee Coordinator, ahua@unhcr.org; **Annette Rehr**, Snr. External Relations Officer, rehrl@unhcr.org; **Anna Minuto**, Snr. Information Mng. Officer, minuto@unhcr.org