

Nigeria: Borno State Displacement Profile (as of 31 January 2017)

KEY FIGURES¹

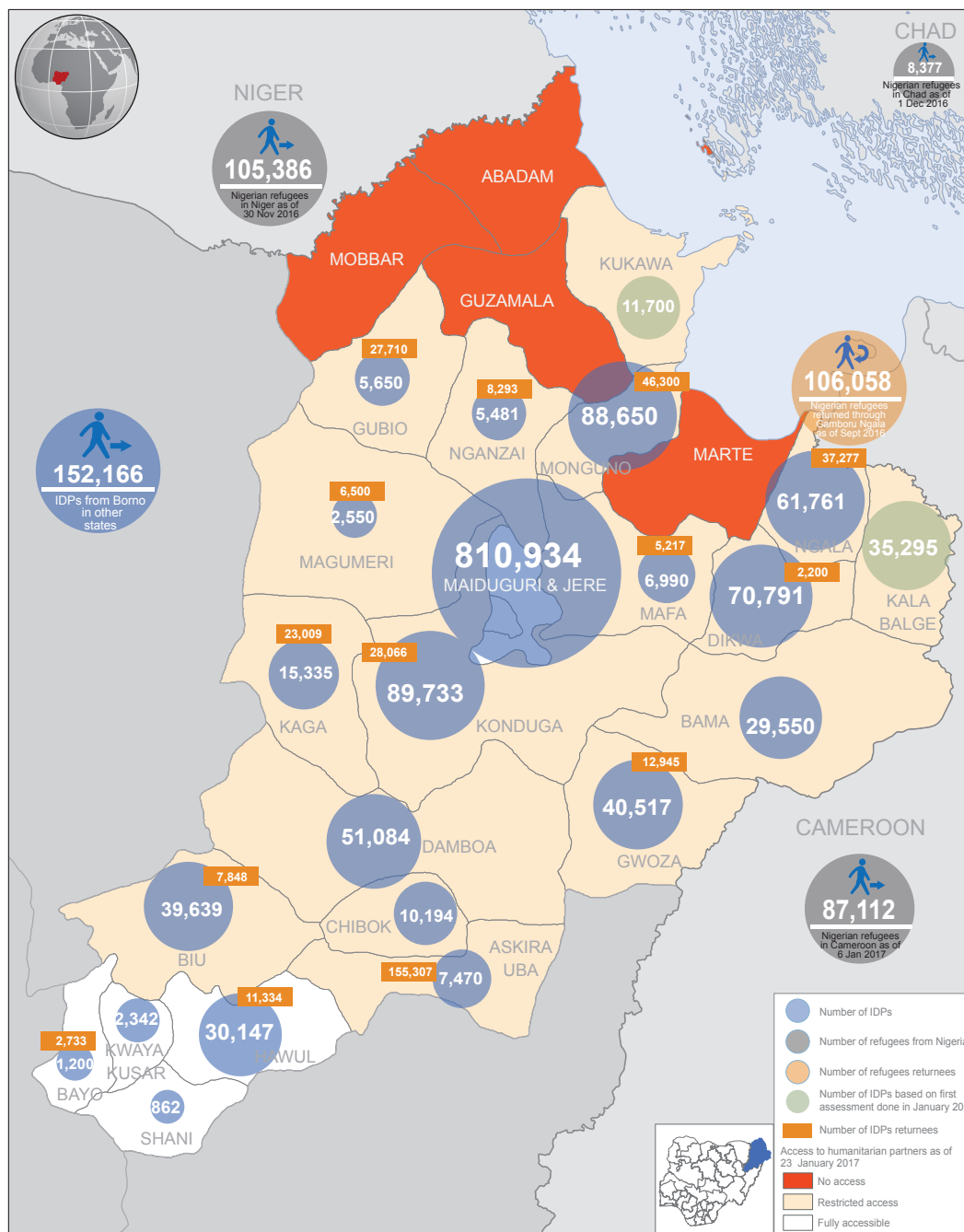
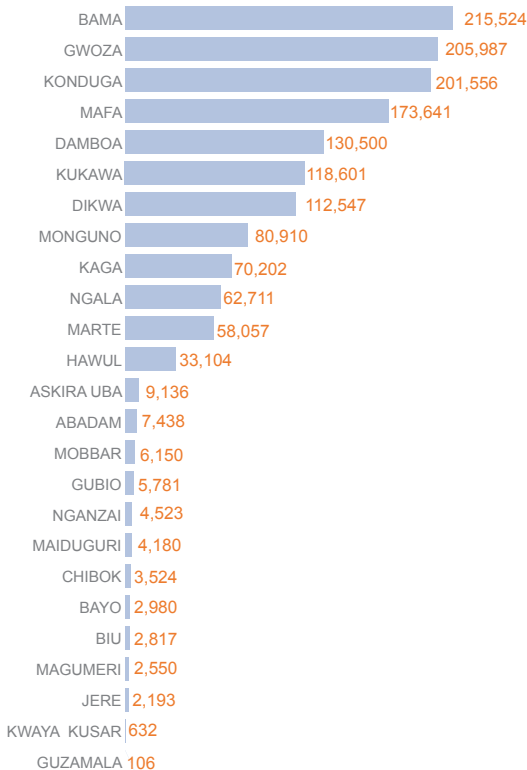
1.4 million
number of internally displaced people living in Borno
1.6 per cent decrease compared to DTM RXII

0.4 million
number of people returning to their areas of origin
3.1 per cent increase compared to DTM RXII

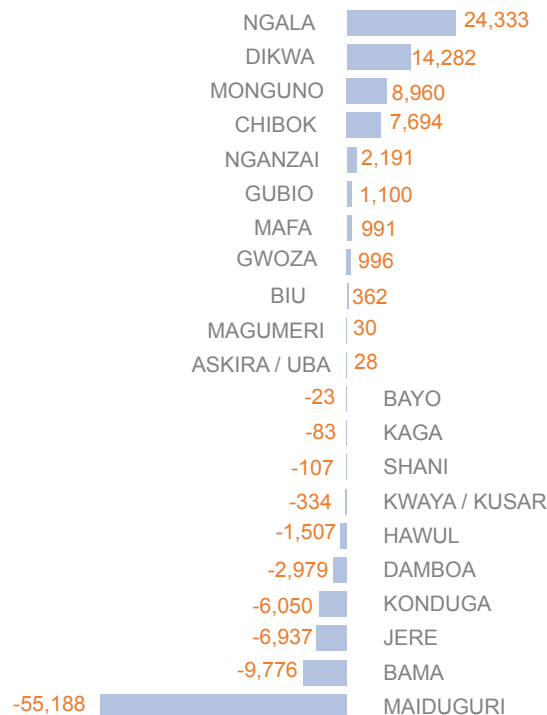
0.1 million
registered refugees who returned through Borno State

IDPs LOCAL GOVERNMENT AREAS OF ORIGIN²

Although majority of the IDPs within/from Borno originate from Bama, Gwoza, Konduga, Mafa, Damboa and Kukawa, the conflict has caused displacement from almost all LGAs:



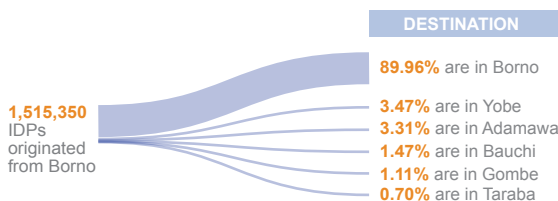
INCREASE/DECREASE OF IDPS COMPARED TO DTM RXII³



The number of IDPs in 11 LGAs increased between October and December 2016 due to the arrival of some of the displaced from elsewhere. Ongoing military operations have also driven up the number of people displaced.

On the other hand, relative improvement of security in some LGAs has seen a decrease in IDP numbers, as more people return towards their LGAs of origin.

CURRENT LOCATION OF IDPs FROM BORNO⁴



The boundaries and names shown and the designations used on this map do not imply official endorsement or acceptance by the United Nations. Developed only for humanitarian activities purposes.

Update on: 31 January 2017 Sources: (1) DTM Round XII & XIII, UNHCR, (2) DTM RXIII (3) DTM RXII, DTM RXIII (4) OCHA Access Monitoring Framework

Feedback: ochanigeria@un.org For more information on Nigeria humanitarian activities: www.humanitarianresponse.info/operations/nigeria http://www.unocha.org/nigeria http://reliefweb.int/country/nga