

Landmines and Explosive Remnants of War in Lebanon

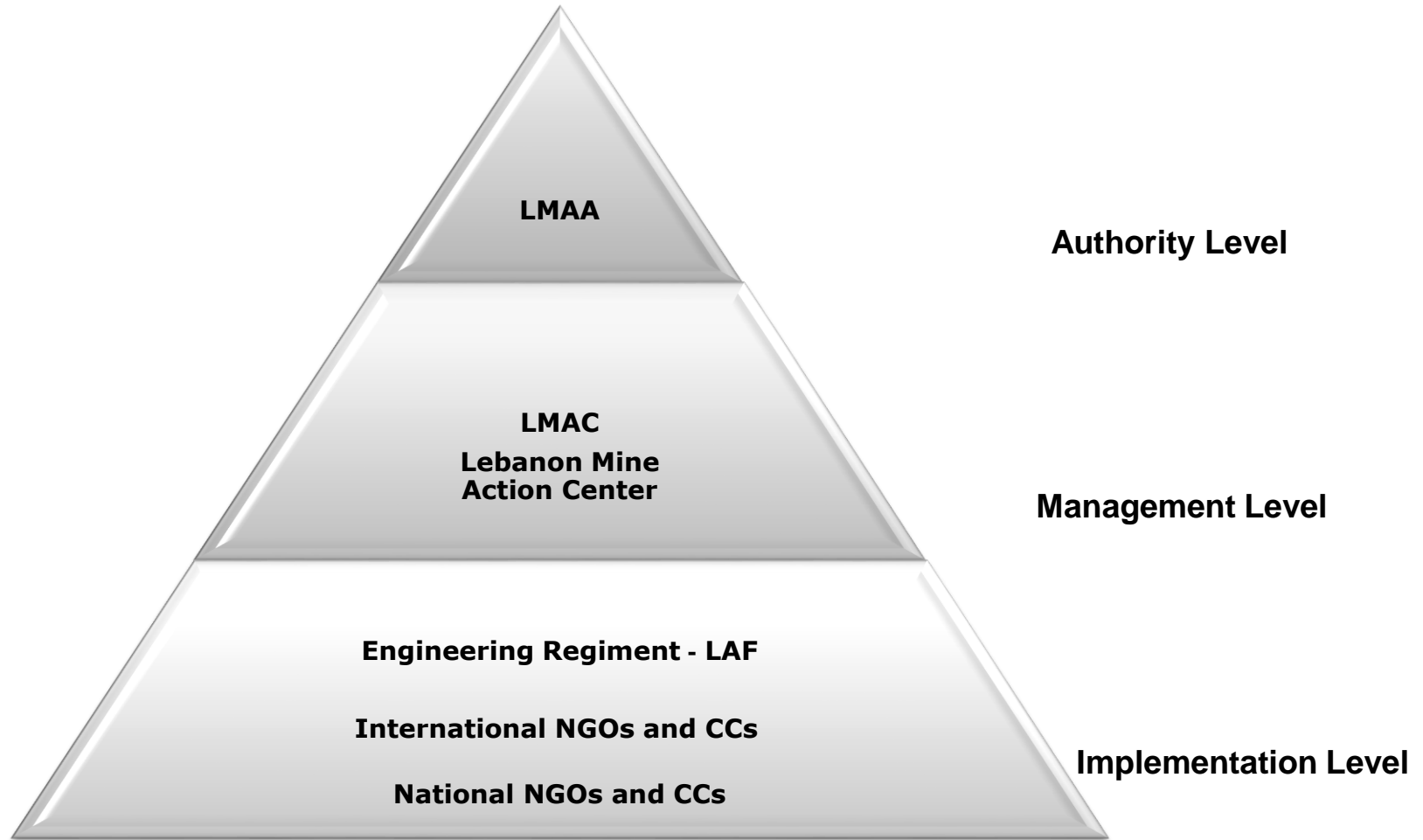


Dave Willey- Country Director-MAG

Content

1. Coordination of Mine Action in Lebanon
2. Contextual History- Landmine and ERW Contamination
3. Contamination remaining in Lebanon
4. Mine Action as an ongoing protection concern
5. Ongoing issues for the Mine Action Sector in Lebanon
6. Questions

Coordination of Mine Action in Lebanon



Contextual History- Landmine and ERW Contamination

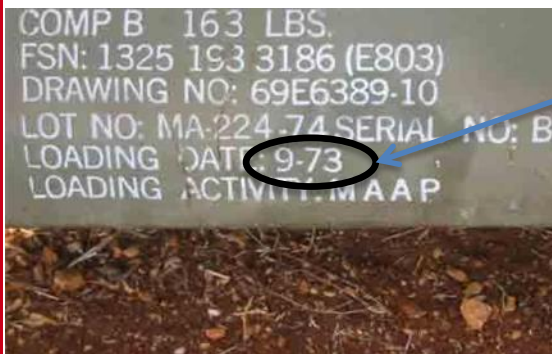
Contamination in Lebanon is the result of more than one conflict.

1975-1990: Civil War. (Cluster-munitions in 1982)

1990-2000: Clashes with Israeli forces in the south (and the mining of the Blue Line)

2006: The July War (cluster munitions)

Contamination is therefore varied and widespread.



Submunitions (Cluster Munitions)

Mines Advisory Group

Submunitions in Lebanon



MAG

saves lives builds futures



BLU-26/B



BLU-63/B



BLU-61



Mk 118 (Rockeye)



M 43 (all USA)



M 42



M 77 (both USA)



M85 w/o SD



M 85 w/ SD (ISRAEL)*



MZD-2 (CHINA)

* SD stands for Self Destruct Mechanism



MAG

saves lives builds futures

Submunitions (Cluster Munitions)



Anti-Personnel Landmines

Mines Advisory Group

AP-Blast-Mines in Lebanon



No. 4, Israel



No. 4 A, Israel



No. 4 enhanced, Israel



PMD 6 and 6M (from right), USSR



Gyata 64, Hungary



VS 50, Italy



Mi Ap ID Mle 51, France



Mi Ap DV Mle 59, France



No. 10, Israel



M 14 USA



PRB M 35, Belgium



PMN 2, USSR



Type 72A and B (from left), China



MAPS, Portugal



No. 3, Israel

Anti-Personnel Landmines



Anti-Tank Landmines

Mines Advisory Group

AT-Mines in Lebanon



MAG

saves lives builds futures



TM 46 / TMN 46



TM 57



TM 62 M (all USSR)



PRB M 3



TMA 3



TMA 4



TMA 5 (all Yugoslavia)



Mk 7 (UK)



TC 6 (Italy)



M 7A1



M 6A1



M 15



M 19 (all USA)



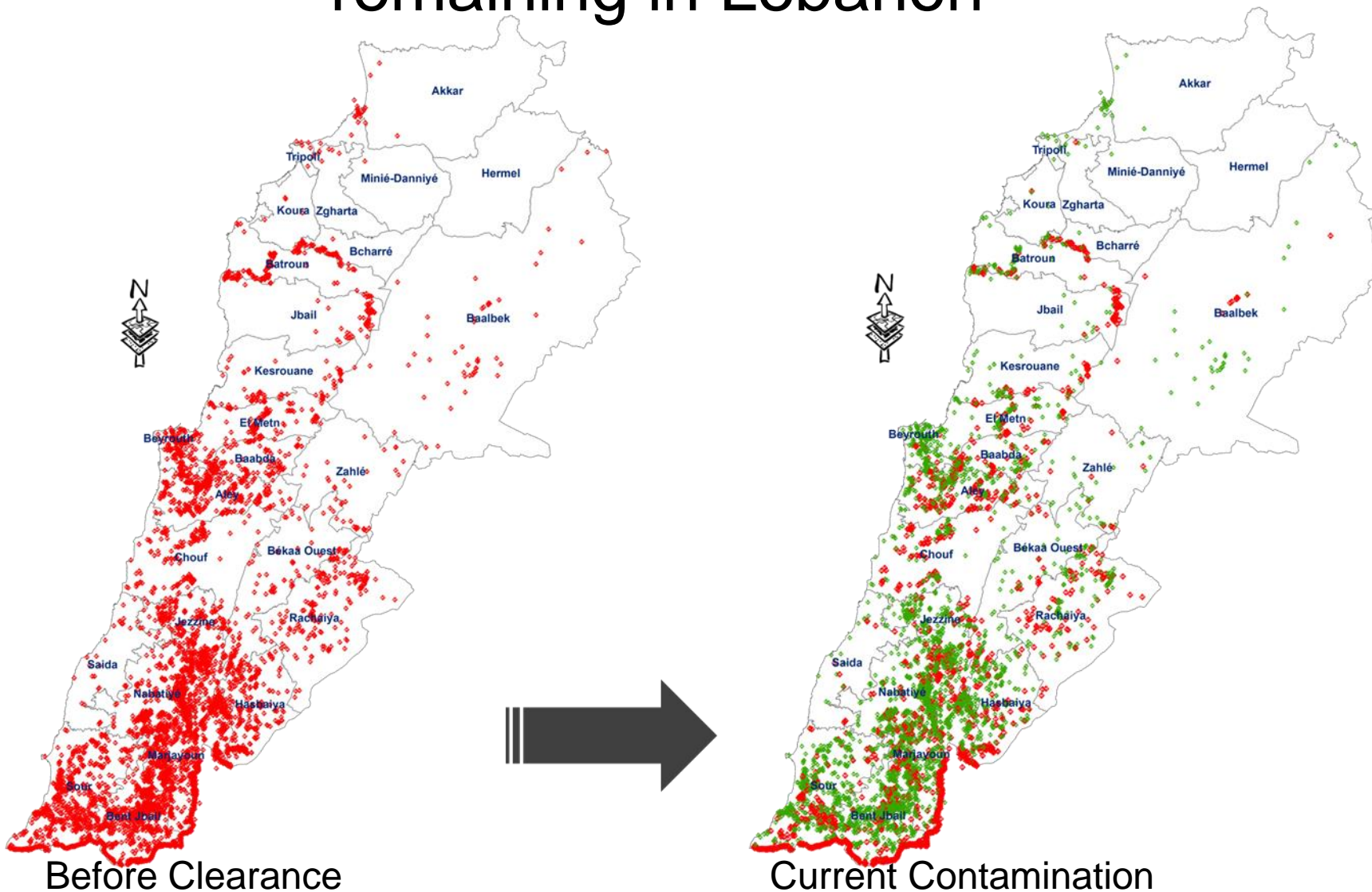
MAG

saves lives builds futures

Anti-Tank Landmines



Landmine and ERW contamination remaining in Lebanon



Landmine and ERW contamination remaining in Lebanon

Table 1: **CMR contamination at the end of 2015**⁷

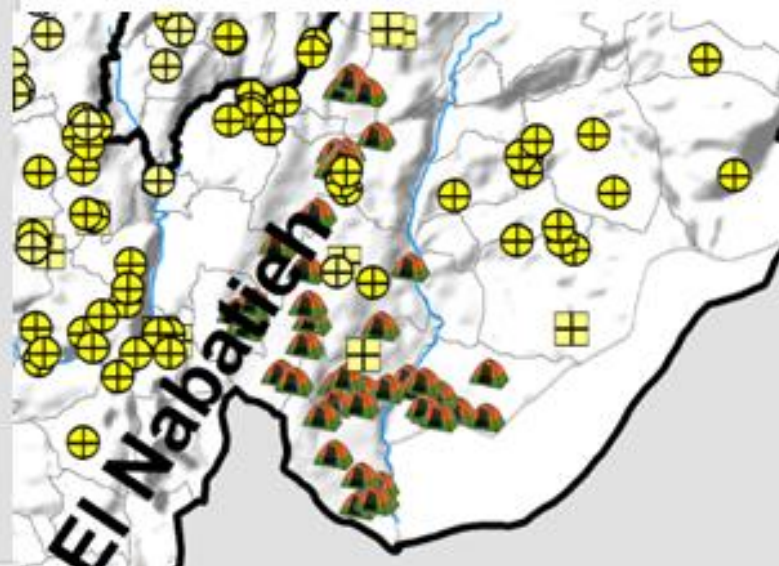
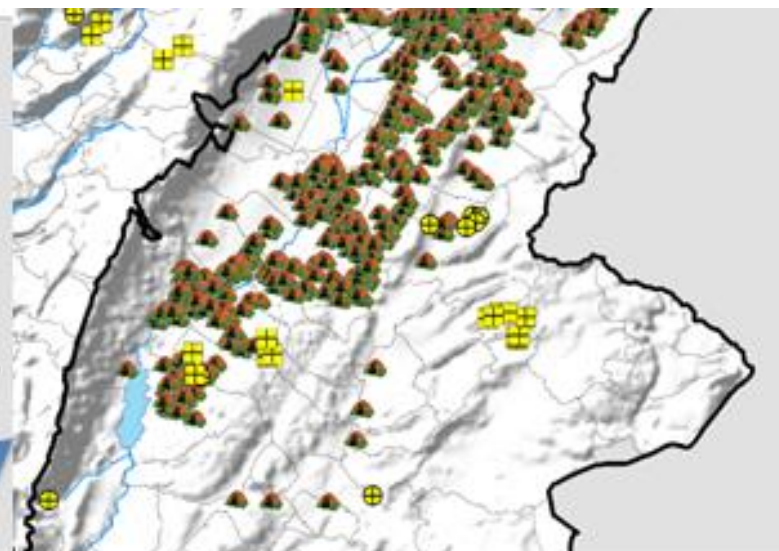
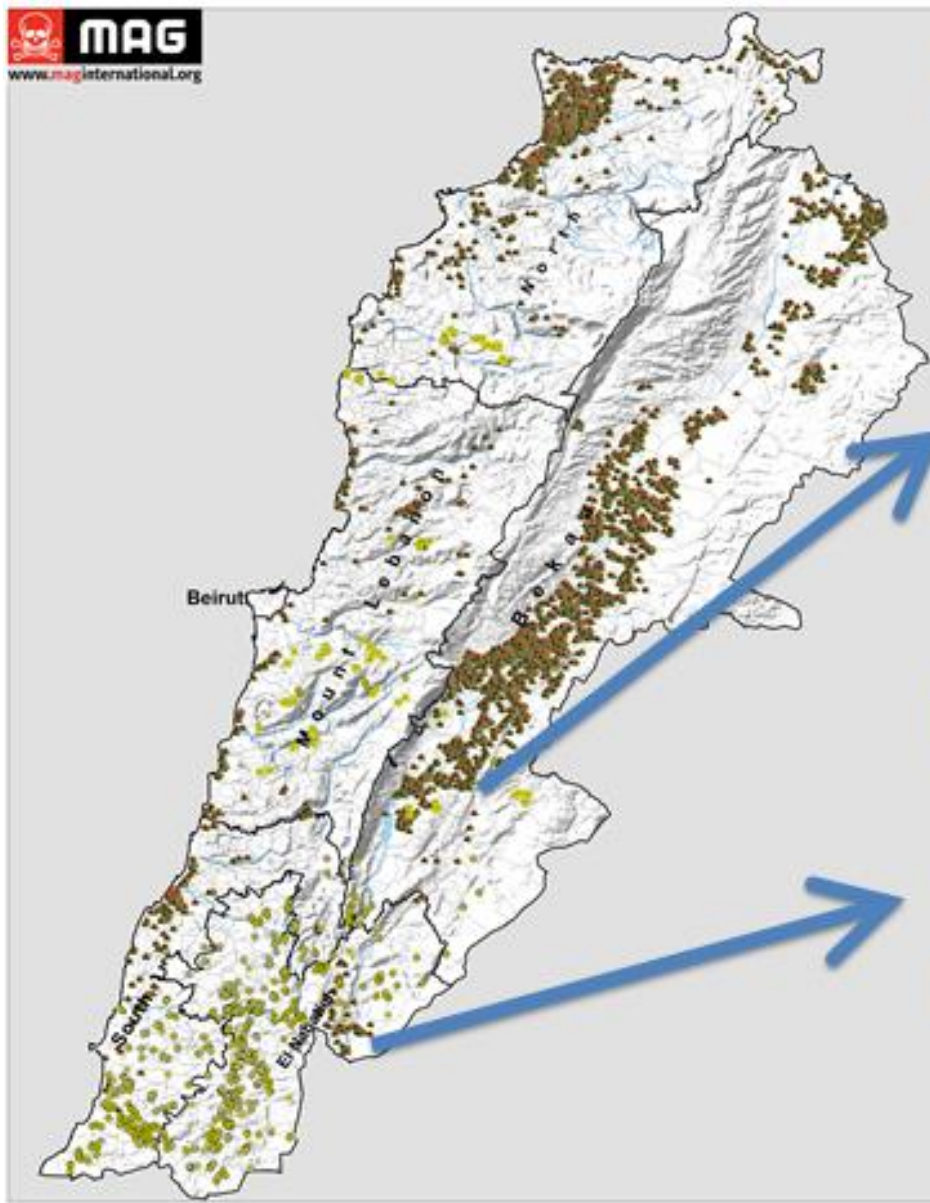
Province	Areas	Area cleared (m ²)
Beqaa	36	1,160,692
Jabal Loubnan	8	264,000
Janoub	246	5,544,253
Nabatiyeh	483	9,349,855
Totals	773	16,318,800

Table 2: Landmine Contamination by province as at end 2016¹¹

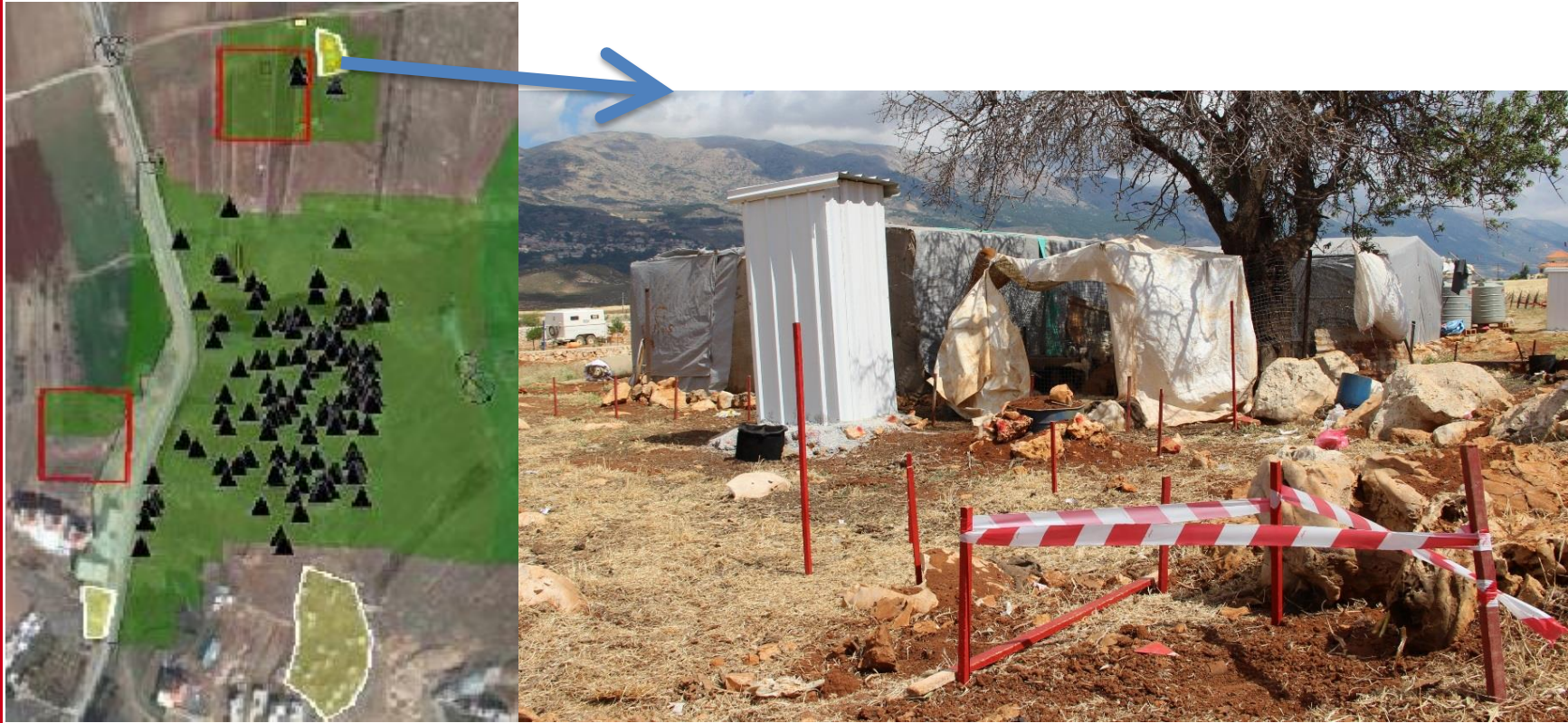
*In addition, 5,251,007m² of mined area exists along the Blue Line.

Province	CHAs	Area (m ²)
Al Beqaa	38	1,484,173
Al Janoub (south Lebanon)	214	1,492,107
Al Nabatiyeh (south Lebanon)	786	6,717,764
Jabal Loubnan (Mount Lebanon)	348	19,092,295
Al Shimal (north Lebanon)	75	301,618
Beirut	1	1,000
Totals	1,462	29,088,957

*



Landmine and ERW contamination as an ongoing protection concern



Cluster bomb found 2 meters away from Syrian refugee tents in Baaloul

Clearance

www.maginternational.org



Risk Education



Ongoing issues for the Mine Action Sector in Lebanon

- Forgotten issue
- Mine Action Operators have not integrated themselves into wider planning/coordination
- Donors don't recognise that there is a major protection concern for Syrian refugees- and funding isn't mainstreamed
- Decreased funding for mine-action in 2016-2017

Questions?

www.maginternational.org

