



URGENT NEEDS FOR IRAQIS DISPLACED FROM MOSUL INSIDE IRAQ AND INTO NORTHERN SYRIA

USD 37 MILLION REQUIRED FOR THE NEXT 6 WEEKS

9 March 2017

OVERVIEW

The conflict in Mosul is causing mass displacement with over 215,000 people currently displaced as a result of Mosul operations which began on 17 October 2016. An estimated 57,000 people have already fled western Mosul since operation to re-take this part of the city started on 19 February, and there are fears another 40,000 people may flee in the next 48 hours. Humanitarian actors expect that beyond the 48-hour period, 20,000 individuals per day could continue to flee. Estimated nearly 750,000 people are still living in areas of western Mosul and many of them are likely to be displaced in the coming weeks and months. With the current pace of displacement, current shelter capacity in camps could be exhausted soon.

Nearly 14,500 Iraqis have fled into Syria since the beginning of the Mosul operation, and arrivals in the last seven days have exceeded 700 people. Almost 16,000 people are hosted in Al-Hol refugee camp (including those who arrived prior to October 2016), in Al-Hassakeh Governorate and many more are expected to arrive in the coming weeks.

UNHCR has already assisted over 260,000 individuals displaced with shelter, core relief items (CRIs - including items for winter), and protection services in camps and in newly accessible areas in and around Mosul. Today, UNHCR is able to immediately accommodate in camps up to 28,000 people, with the capacity to accept up to an additional 90,000 people immediately thereafter. UNHCR has 95 tented halls, 30,000 tents warehoused with roughly 10,000 pre-positioned, and NFI kits warehoused and pre-positioned to assist some 150,000 individuals (25,000 families). UNHCR has roughly 50,000 emergency shelter kits to support an out-of-camp response or to supplement shelter space in and around camps.

In Syria, UNHCR seeks to immediately expand Al-Hol camp and build shelter plots for 19,000 people in the coming weeks. A package of CRIs are required for all new arrivals, who are showing signs of exhaustion after their precarious flight.

To continue this vital work UNHCR urgently needs an additional infusion of funds, including USD 7 million in the next 14 days and an additional USD 30 million in the next two months.

FUNDING PRIORITIES

SHELTER AND NFI IS A PRIORITY NEED IN THE NEXT 14 DAYS

USD 7 million urgently required



Shelter and NFI

30,000 people sheltered in camps in Iraq and provided a six-person family tent on shelter plots throughout displacement-affected areas, in close cooperation with the authorities

5,000 new arrivals sheltered in Al-Hol camp in Syria and provided with non-food items and shelter



7 million

MORE ASSISTANCE NEEDED IN THE NEXT 6 WEEKS

USD 30 million urgently required



Protection

145,000 people in Iraq and 19,000 people in Al-Hol camp in Syria have access to protection referrals and assistance through regular protection monitoring, targeted legal assistance, GBV response, and child protection outreach



5 million



Shelter, NFI and Health

90,000 people in Iraq provided with shelter in camps throughout displacement-affected areas

14,000 people in Al-Hol camp in Syria provided shelter and health services and **25,000 people in the camp** provided with cash assistance



20 million



CCCM

120,000 people in Iraq and 19,000 people in Al-Hol camp in Syria assisted with camp coordination and camp management



5 million

KEY FIGURES

215,142

Iraqis currently internally displaced from Mosul and surrounding areas since military operations to retake the city began on 17 October 2016¹

14,486

Iraqis received in Al-Hol camp in Al-Hassakeh Governorate in Syria since the start of Mosul offensive

Serious protection concerns remain for the

Estimated 750,000

civilians are living in western Mosul, and food, medicine, basic household commodities and fuel are running low.

5,760 family plots

currently occupied out of 12,497 family plots (for some 95,000 people) in UNHCR built camps ready to receive IDPs displaced from the Mosul corridor

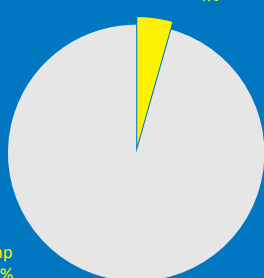
¹IOM-DTM Emergency Tracking since 17 October 2016.

FUNDING

USD 578 million

requested for Iraqi IDPs and refugees in the region in 2017

Funded
4%



Gap
96%

of which
USD 212 million
requested for the emergency response for Iraqis displaced from Mosul in Iraq



1.2 - 1.5 million
people impacted
up to 1 million
displaced
700,000 in need
215,142 displaced
since 17 October



Protection
(Co-ordinated by UNHCR & DRC)



Shelter & NFI
(Co-ordinated by UNHCR & NRC)



**Camp Coordination &
Camp Management**
(Co-ordinated by UNHCR & IOM)



Camp/Site Plots

44,000

Targets:



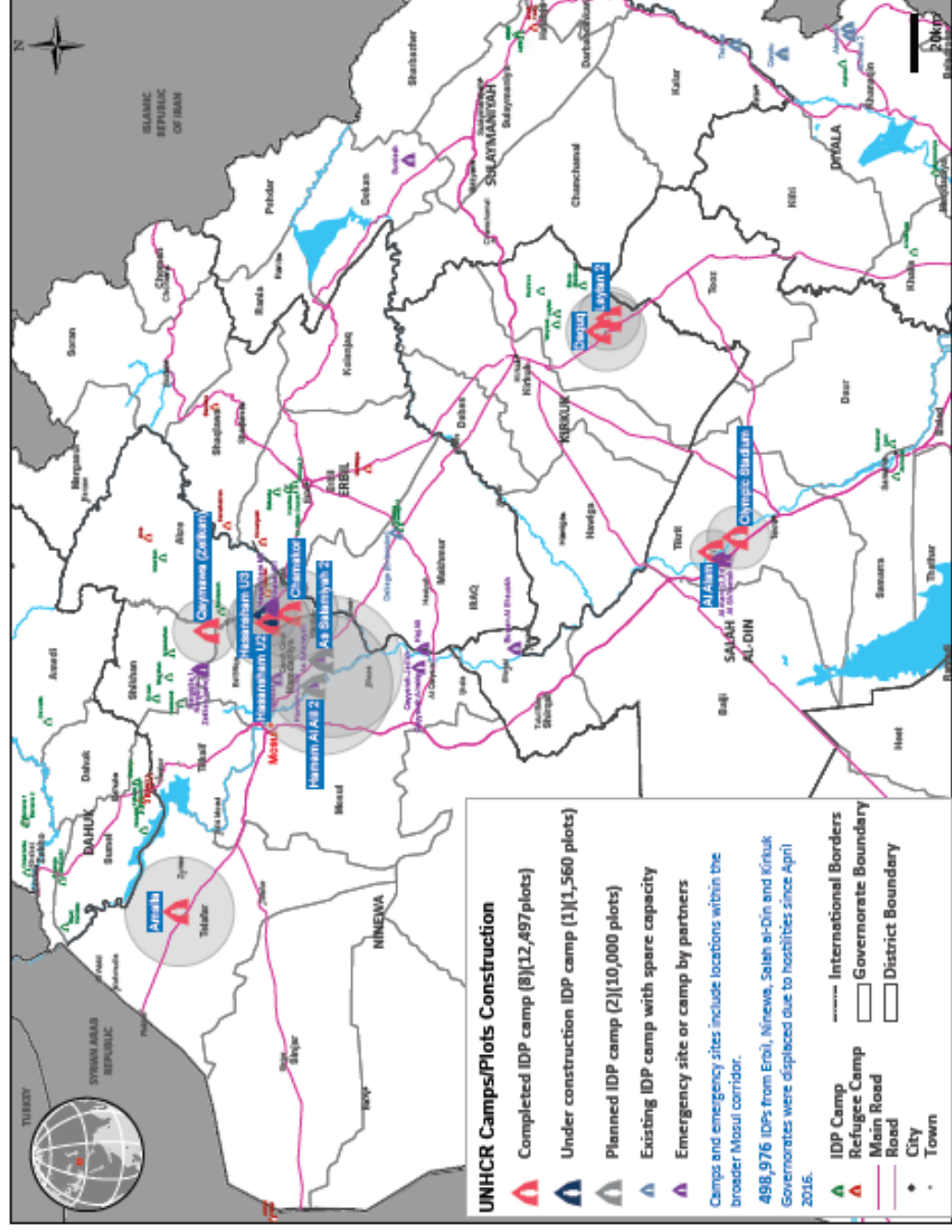
**Tents
Camps & Shelter
Alternatives**

60,000



NFI Kits

77,500

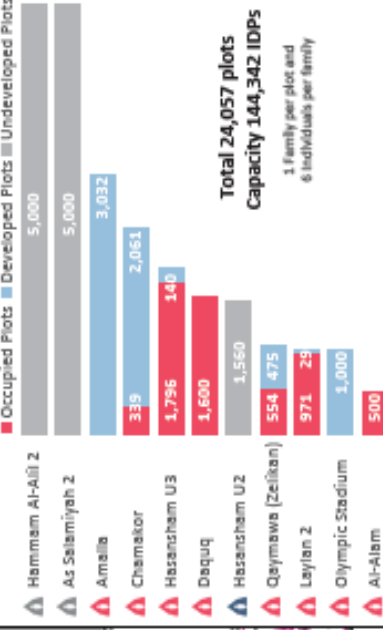


UNHCR Protection Monitoring for Mosul Response

14,366 HHs Assessed
74,741 Individuals



Plots in UNHCR Constructed Camps



Another 2,994 plots are also available in Qaymawa (UNHCR(847 plots), Alwasit (UNHCR(101 plots), Suddah (MOOM(400 plots), Fawda (MOOM(396 plots), Alwasit (MOOM(750 plots) and Deqaa Station (Eritrean Red Crescent(700 plots) IDP camps.

UNHCR Funding Requirements



USD 212 million
required in 2017 for Mosul
emergency response