

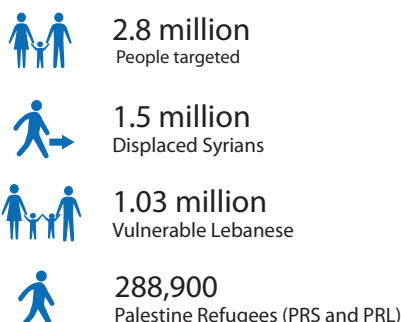
2017 March Statistical Dashboard



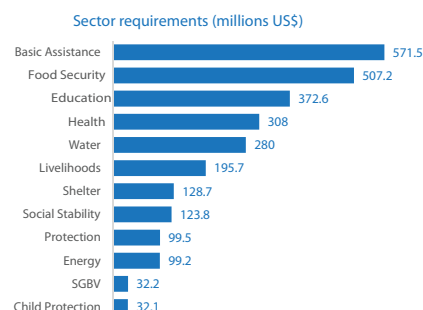
Inter-Agency
Coordination
Lebanon

The monthly dashboard summarizes the progress made by partners involved in the Lebanon Crisis Response and highlights trends affecting people in need. Partners in Lebanon are working to: 1) ensure protection of vulnerable population; 2) provide immediate assistance to vulnerable populations; 3) support service provision through national systems; and 4) reinforce Lebanon's economic, social, institutional and environmental stability.

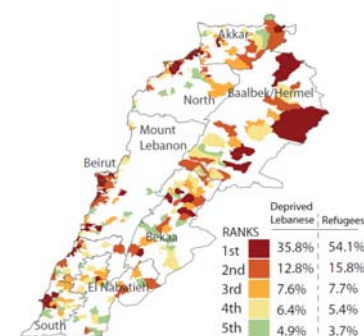
2017 Planning Figures



\$ 2017 Funding Requirements US\$ 2.75 billion



251 Most Vulnerable Cadasters



Basic Assistance

reached / target

of households receiving regular multi-purpose cash MPC transfers (every month)* **75,357 / 240,276**

Total USD amount distributed in multi-purpose cash (Leb, Syr & Pal) **\$34.7 m / \$316 m**

of households receiving seasonal cash grants or vouchers **183,338 / 302,756**

Total USD amount distributed as seasonal multi-purpose cash (Leb, Syr & Pal) **\$65.1 m / \$156 m**

Total USD amount injected into economy in forms of cash assistance (seasonal + regular) **\$99.8 m / \$472 m**

0% 100%
* Vulnerable Lebanese, Syrian Refugees and Palestine Refugees. Reached include HHs targeted by UNICEF.

Regular multi-purpose cash	Households Reached	USD distributed
Lebanese	1,860	\$747 k
Syrians	64,435	\$ 31.2 m
Palestinians	9,422	\$ 2.8 m

Minimum Expenditure Basket (MEB)¹ 114 \$/capita/month

Survival Minimum Expenditure Basket (SMEB)¹ 87 \$/capita/month

Syrian refugee households living on less than MEB² 71%

Syrian refugee households living on less than SMEB² 53%



Education

reached / target

of children and youth 3 years and above whose registration fees for MEHE endorsed ALP are partially or fully subsidised for 2017 **7,602 / 20,000**

of Non-Lebanese children enrolled in formal basic public schools (school year 2016/17) **202,259 / 423,832**

of teachers, education personnel trained in schools **365 / 20,323**

0% 100%

% of school aged refugees out of formal education³ 59%

Non-Lebanese students in basic education enrolled in the first shift³ 1 of 3

% of non-Lebanese among all students enrolled in first shift basic education³ 32%

% of non-Lebanese among all students enrolled in public schools in basic education³ 50%



Water

reached / target

of affected people assisted with temporary access to adequate quantity of safe water for drinking and water for domestic use **180,738 / 194,500**

of affected people assisted with sustained access to adequate quantity of safe water for drinking and for domestic use **386,057 / 1,765,000**

of affected people with access to improved safe sanitation in temporary locations **148,456 / 194,500**

individuals who have experienced a WASH behaviour change session/activity **32,397 / 325,000**

0% 100%

% Syrians refugee households that have access to cleaning items² 90%

% Syrians refugee households that have access to personal hygiene items² 87%

% Syrian refugee households that have access to female hygiene items² 86%

% Syrian refugee households that have access to baby care items² 78%



Food Security

reached / target

of vulnerable people reached with monthly food assistance (various modalities) **758,708 / 939,709**

Total USD transferred as cash for food **\$59.3 m / \$ 344.9 million**

of farmers with enhanced farming production **386 / 21,693**

of people supported for employment in the agriculture sector **627 / 10,000**

of people supported for improved nutritional practices **2,450 / 35,000**

0% 100%

% Syrian refugee households present some level of food insecurity² 93%

% Syrian refugee households are moderately to severely food insecure² 36%

% Syrian refugee households depend on food voucher/ecard for income source² 33%

% Lebanese households vulnerable to food insecurity⁴ 10%

% Lebanese Farmers in need of agriculture support⁴ 73%

% PRS population who is food insecure⁵ 94.5%



Health

reached / target

# of subsidized primary health care consultations provided	416,648 / 2,214,000
# of persons assisted with their hospital bills	22,939 / 130,000
# of staff receiving salary support at MoPH central and peripheral levels	112 / 244
0%	100%

% of Syrian refugees not able to access needed primary healthcare in past 6 months ²	16%
% of Syrian refugee households monthly health-related expenditure share ²	12%
% Syrian refugee household monthly health-related expenditure ²	USD 55
% of Global Acute Malnutrition (GAM) among Syrian Refugee children ²	2.3%



Livelihoods

reached / target

# micro, small and medium enterprises (MSME) & cooperatives supported through increased access to financial services, in-kind & cash grants	370 / 2,750
# of targeted vulnerable people working on public infrastructure/ environmental assets upgrading	541 / 37,650
# people trained and/or provided with marketable skills and services	6,431 / 28,000
0%	100%

% of Lebanese Household registered with NPTP have access to full time employment ⁶	13%
% of Syrian refugees live below the poverty line ²	71%
Estimated number of Syrians employed ⁷	153,600
% of Lebanese SMEs are concentrated in Beirut and Mount Lebanon area ⁸	78%



Protection

reached / target

# of individuals who benefitted from legal counseling, assistance and representation regarding legal stay	7,780 / 40,000
# of individuals who benefitted from counseling, legal assistance and legal representation regarding civil registration including birth registration, marriage	22,706 / 70,000
# of individuals benefitting from community-based interventions	18,388 / 61,500
# of Individuals trained, supported, and monitored to engage in community-based mechanisms	940 / 4,750
# of individuals with specific needs receiving specific support (non-cash)	2,596 / 16,800
# of women, girls, men and boys at risk and survivors accessing SGBV prevention and response services in safe spaces	18,412 / 140,000
# of women, girls, men and boys sensitized on SGBV	59,849 / 250,000
# of boys and girls accessing focused psychosocial support and/or assisted through CP case management services	7,773 / 53,800
# of caregivers accessing child protection prevention (caregivers' programmes)	11,537 / 105,500
# of boys and girls accessing community based PSS	36,609 / 177,000
# of boys, girls and caregivers reached on key child protection issues	69,077 / 613,000
0%	100%

Total registered Syrian refugees ⁹	1,011,366
Percentage of Syrian refugee who are women and children ⁹	80.5%
% of Syrian refugee Households reporting that all members have legal residency permits ²	21%
% of households reported having at least one member with specific needs ²	63%
# of individuals participating in activities in community centres and SDCs (2017) ¹⁰	33
# of institutional actors trained who demonstrate increased knowledge of SGBV(2017) ¹⁰	252
# of partners and government staff provided with general training on child protection and children's rights (2017) ¹⁰	387



Shelter

reached / target

# of people benefitted from weatherproofing and/or maintenance of makeshift shelters within informal settlements, residential and non-residential buildings	19,200 / 269,000
# of people benefitting from rehabilitation, upgrade or repair of substandard buildings into adequate shelters	16,386 / 258,000
# of people benefitting from upgrade of common areas within substandard residential buildings	0 / 30,000
# of individuals received fire fighting kits and awareness sessions in informal settlements and substandard buildings	9,065 / 131,000
0%	100%

# of assessments and profiles of (mainly poor urban) neighbourhoods (target:15)	0
% of Syrian refugees living in Informal Settlements ²	17%
% of Syrian refugees living non-residential buildings (ex: worksites, garages, shops) ²	14%
% of Syrian refugees living in substandard shelter conditions ²	38%
Average cost for rent per household for Syrian refugees ²	USD 189
Shelters that have been rehabilitated up to minimal standard in 2016 ⁷	11,281



Social Stability

reached / target

# community & municipal support project implemented to alleviate resource pressure and reduce tensions	40 / 495
# new dispute resolution and conflict prevention mechanisms established	11 / 61
# youth and children engaged in social stability initiatives	11,520 / 20,000
0%	100%

# of vulnerable cadastres where population has increased by 50% or more ⁷	114
% of Lebanese that feel safe ¹¹	55%
% of Syrians that feel safe ¹¹	73%
% increase in municipal garbage collection expenditures ¹²	40%
% of host and displaced communities members reporting multiple causes of tensions between communities ¹³	55%

Sources:
¹ Inter-agency Information Sharing Portal, Basic Assistance, SMEB, MEB: <http://data.unhcr.org/syrianrefugees/download.php?id=6327>
² 2016 Vulnerability Assessment for Syrian Refugees VASyR, <http://data.unhcr.org/syrianrefugees/download.php?id=12482>
³ MEHE - 2017
⁴ Food Security and Livelihoods Assessment of Lebanese Host Communities FSLA 2015
⁵ AUB UNRWA 2015
⁶ MoSA NPTP Database

⁷ ILO Quantitative Framework for Access to work for Syrian refugees in Lebanon, 2016

⁸ MOET SME strategy

⁹ UNHCR Data as of 31 December 2016

¹⁰ Activity Info Partner Reports - 2017

¹¹ USJ / UNHCR Perception Survey

¹² REACH/OCHA/UNICEF: Defining Community Vulnerabilities in Lebanon <https://data.unhcr.org/syrianrefugees/download.php?id=9545>

¹³ Inter-Agency 251 most vulnerable cadastres, <http://data.unhcr.org/syrianrefugees/download.php?id=8698>

LCRP 2017 Quarter 1 Funding Update

as of 31 March 2017



Inter-Agency
Coordination
Lebanon

2017 APPEAL

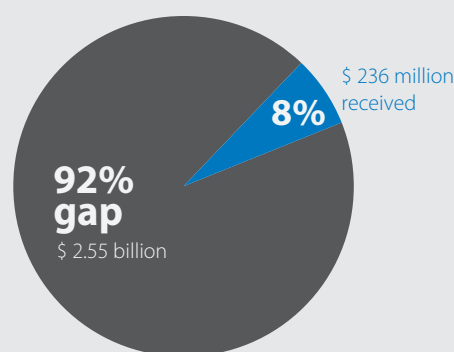
RECEIVED

**\$ 236
MILLION**

Total funding reported
received as of 31 March 2017.
Includes \$5 million not yet
allocated to any sector

APPEAL

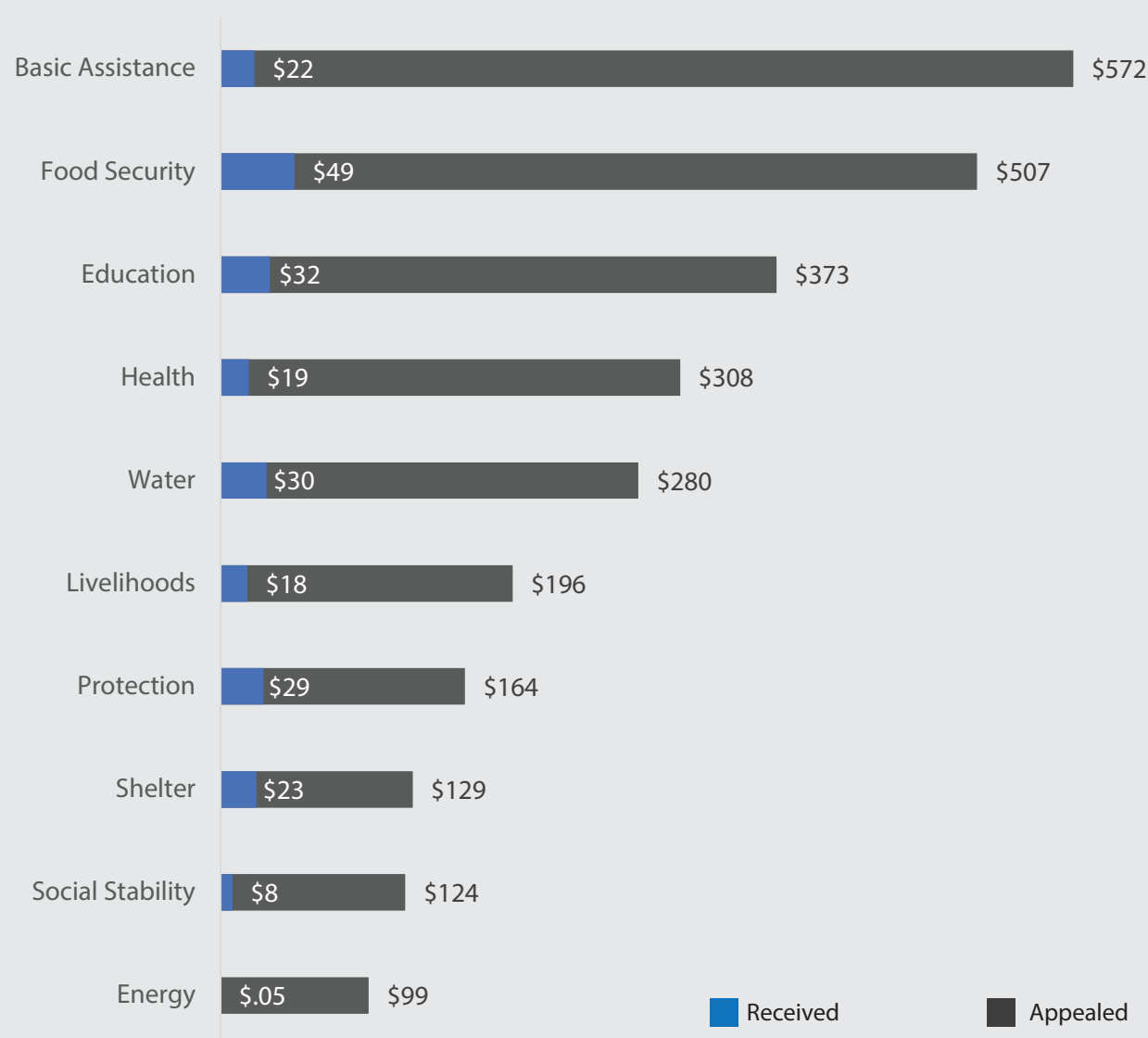
**\$2.75
BILLION**



TOTAL APPEAL

2017 QUARTER 1: FUNDING RECEIVED AND ALLOCATED

(millions USD)



44 Organizations reported funding received in 2017: ACTED, ADRA, AMEL, Ana Aqra, ANERA, Arche Nova E.V., Diakonie, Dorcas, FAO, GVC, Handicap International, Humedica, ILO, IMC, IOM, IRC, KAFA, LSESD, MAG, Medecins du Monde, Mercy Corps, MSD, MTI, NRC, OXFAM, PCPM, QRCS, Save the Children, SFCG, SHEILD, SIF, Solidar Suisse, TdH - Italia, UNDP, UNESCO, UNFPA, UN-Habitat, UNHCR, UNICEF, UNRWA, URDA, WFP, WHO, World Vision International