

SOUTH SUDAN SITUATION

Child Protection

31 December 2016

Situation Overview

As of 31 December 2016, over 1.4 million refugees have fled South Sudan, seeking asylum in the region. **An estimated 66% of refugees are children and 20% are youth (15 to 24 years old).** The statistics below are from registration data from Gambella (Ethiopia), White Nile State (Sudan), Kenya, Uganda and the Democratic Republic of the Congo. In Uganda, there is a total of 433,078 individually registered South Sudanese refugees, however this does not include an additional 206,563 new arrivals yet to be registered (as of 31 December 2016). The number of children with specific needs in Uganda, including unaccompanied and separate children, is unavailable.

Key Figures

657,917*

individually registered South Sudanese refugee children

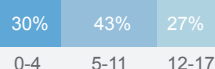
66% of the South Sudanese refugees are children

49%

Girls



Age Breakdown



51%

Boys



38,388*

children with specific needs, including UASC

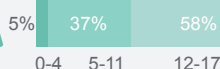
An estimated 10% of South Sudanese refugee children have specific needs

42%

Girls



Age Breakdown



58%

Boys



35,642*

unaccompanied & separated children

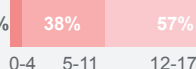
Of the UASC, 14% are unaccompanied and 86% are separated children

42%

Girls



Age Breakdown

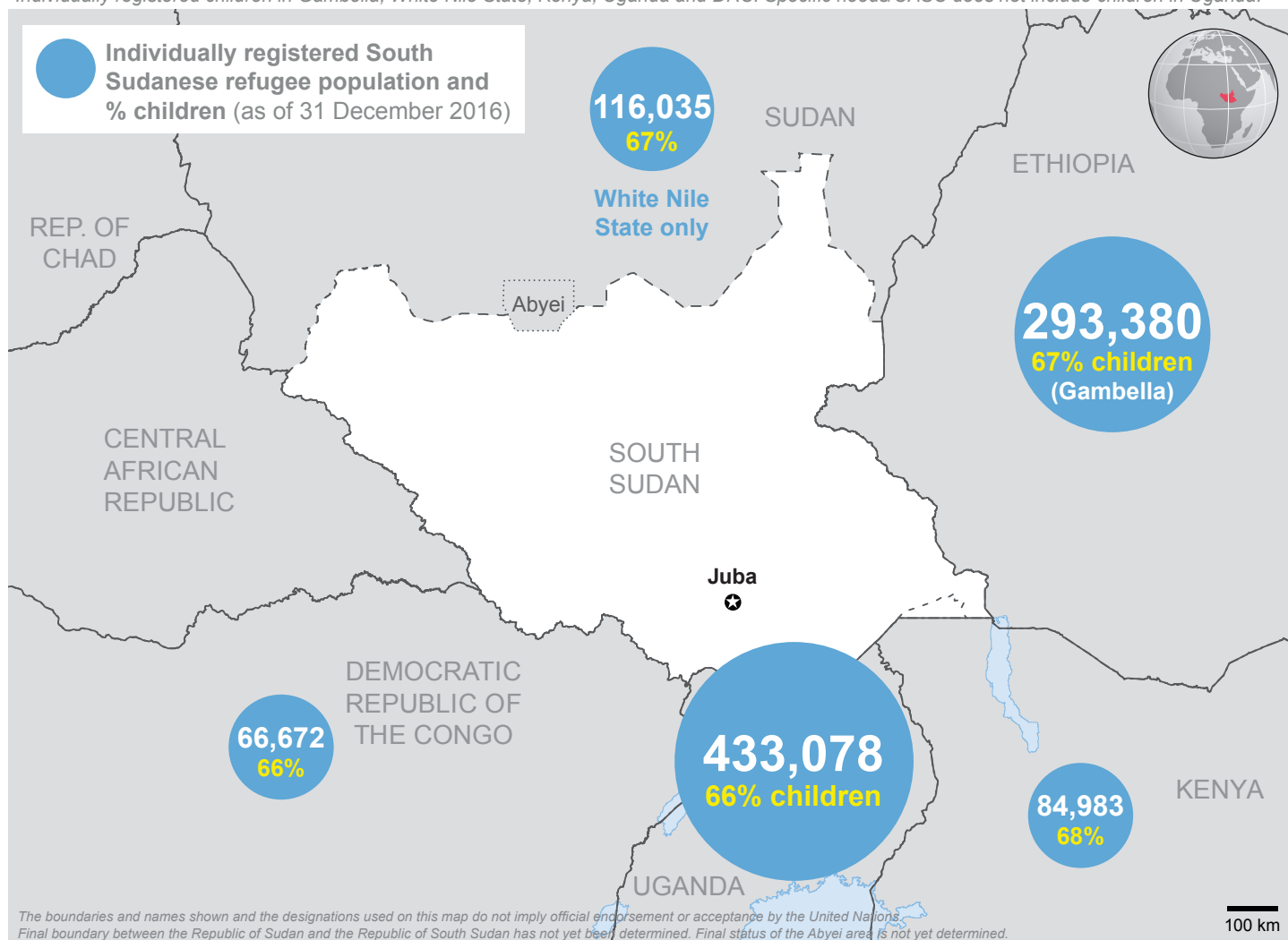


58%

Boys



*Individually registered children in Gambella, White Nile State, Kenya, Uganda and DRC. Specific needs/UASC does not include children in Uganda.



SOUTH SUDAN SITUATION

Child Protection

1 October to 31 December 2016

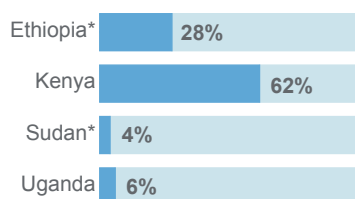
Regional Inter-Agency Response Child Protection Indicators

Child and adolescent activities

18% 

of children participated in child friendly activities on average each month (up from 16% in previous quarter)

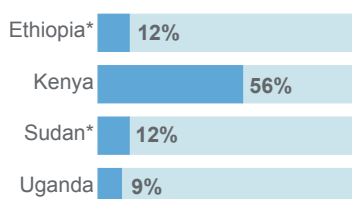
Of which:  **43% girls**  **57% boys**



16% 

of adolescents participated in targeted activities on average each month (up from 11% in previous quarter)

Of which:  **34% girls**  **66% boys**

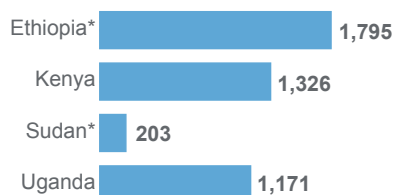


Children with specific needs

4,495 

new Best Interest Assessments (BIAs) conducted in the past quarter (up from 3,196 conducted in previous quarter)

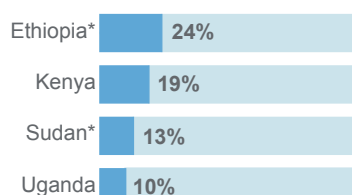
Of which:  **47% girls**  **53% boys**



19%

of children who received a BIA in the past quarter were identified as having high-risk protection concerns

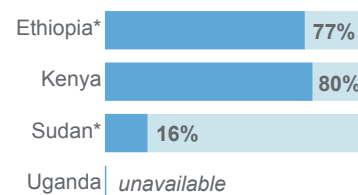
Of which:  **55% girls**  **45% boys**



67% 

of children with specific needs received specialised child protection services in the past quarter (up from 36% in previous quarter)

Of which:  **39% girls**  **61% boys**



This dashboard draws together child protection indicators from Gambella in Ethiopia, Kakuma in Kenya, White Nile State in Sudan and the settlements Uganda to give a regional snapshot of the child protection response to the South Sudan situation. The indicators are compiled regionally from UNHCR and partners in the field. While encouraging progress continues to be made in responding to the protection risks faced by vulnerable South Sudanese refugee children, the child protection response remains hampered by significant under-funding. As of 31 Dec 2016, the Regional Refugee Response Plan (RRRP) was only 45% funded. At the same time, over 300,000 new South Sudanese refugees fled to the countries of asylum in the final quarter of 2016, the majority to Uganda, Ethiopia and Sudan. The high numbers of new arrivals further stretched agencies' ability to respond to the needs of vulnerable children.

A note on population figures: The population figures are based on best available information at the time of reporting. UNHCR continues to verify the numbers in all countries. The map indicates 433,078 individually registered South Sudanese refugees in Uganda, and as of 31 December 2016 there were an additional 206,563 new arrivals yet to be registered. The number of children with specific needs is currently unavailable for Uganda, where the Government manages refugee registration. Children with specific needs refers to children identified with a protection concern or risk, and includes unaccompanied and separated children, child parents, child spouses, child carer or head of household, teenage pregnancy, child labourers, children with special education needs, children associated with armed forces or those in conflict with the law.