

# BURUNDI SITUATION

## Child Protection

31 December 2016

### Situation Overview

As of 31 December 2016, over 360,00 Burundian refugees have fled Burundi into the Democratic Republic of the Congo, Rwanda, Tanzania and Uganda. Of the Burundian refugee population, 56% are children under the age of 18 years and 21% are youth between the age of 15 and 24 years. The statistics below are from UNHCR registration data. The true number of children with specific needs, including unaccompanied and separated children, may differ. UNHCR and partners continue efforts to harmonise registration and case management information.

### Burundian Refugee Children - Key Figures

# 207,642

**Burundian refugee children**  
(post April '15)

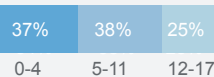
56% of the Burundian refugees are children

49%

Girls



Age Breakdown



51%

Boys



# 7,404

children have **specific needs**, including UASC

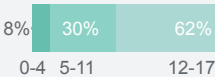
4% of all children have specific needs

44%

Girls



Age Breakdown



56%

Boys



# 6,831

children are **unaccompanied or separated**

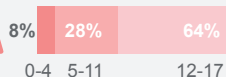
Of the UASC, 53% are unaccompanied and 47% are separated

43%

Girls

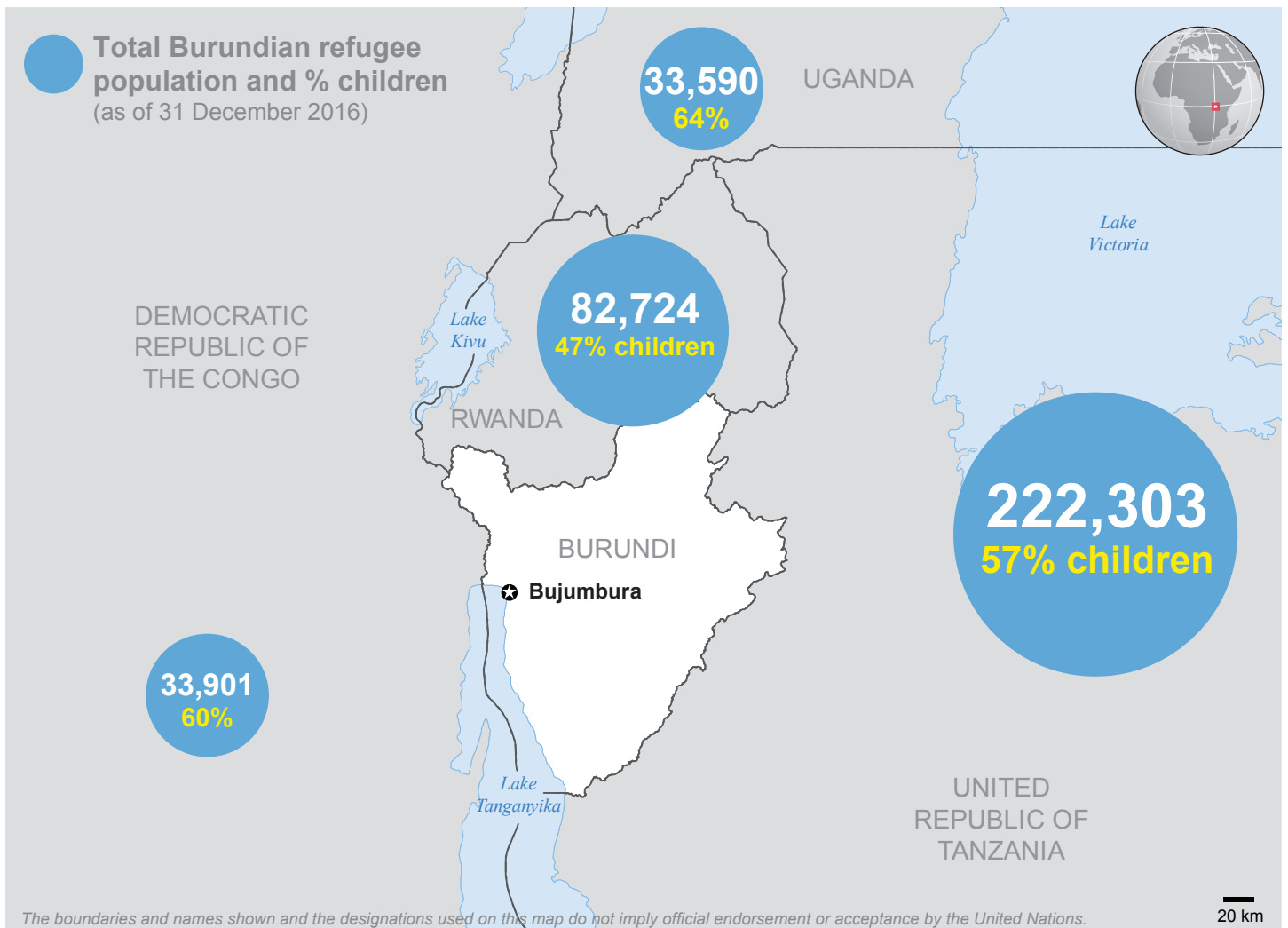


Age Breakdown



57%

Boys



# BURUNDI SITUATION

## Child Protection

1 October to 31 December 2016

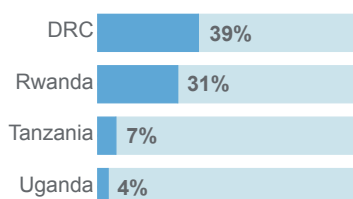
### Regional Inter-Agency Response Child Protection Indicators

#### Child and adolescent activities

# 14% ↓

of children participated in child friendly activities on average each month (down from 15% in previous quarter)

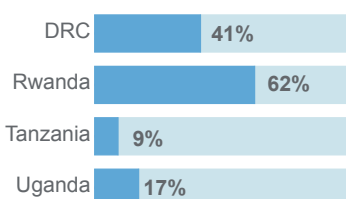
Of which:  48% girls  52% boys



# 23% ↓

of adolescents participated in targeted activities on average each month (down from 53% in previous quarter)

Of which:  37% girls  63% boys

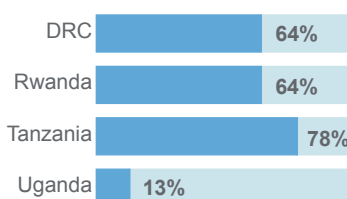


#### Education

# 67%

of school aged children enrolled in primary & secondary school as of 31 Dec 2016

Of which:  44% girls  56% boys

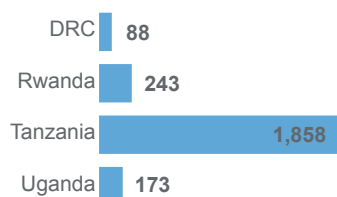


#### Children with specific needs

# 2,362 ↑

new Best Interest Assessments (BIAs) conducted in the past quarter (up from 1,910 conducted in previous quarter)

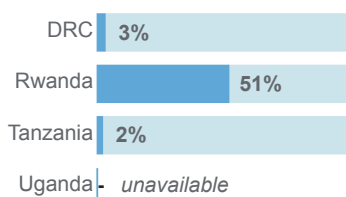
Of which:  45% girls  55% boys



# 7%

of children who received a BIA in the past quarter were identified as having high-risk protection concerns

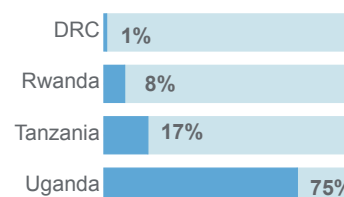
Of which:  58% girls  42% boys



# 15%

of children with specific needs received specialised child protection services in the past quarter

Of which:  51% girls  49% boys



This dashboard draws together child protection indicators from the Democratic Republic of the Congo, Rwanda, Tanzania and Uganda to give a regional snapshot of the child protection response to the Burundi refugee situation. The indicators are compiled regionally from UNHCR and partners in the field.

**A note on population figures:** The population figures are based on best available information at the time of reporting. UNHCR continues to verify the numbers in all countries. Children with specific needs refers to children identified with a protection concern or risk, and includes unaccompanied and separated children, child parents, child spouses, child carer or head of household, teenage pregnancy, child labourers, children with special education needs, children associated with armed forces or those in conflict with the law.