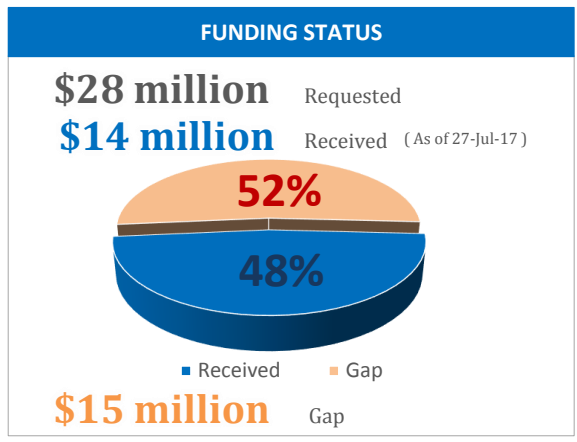
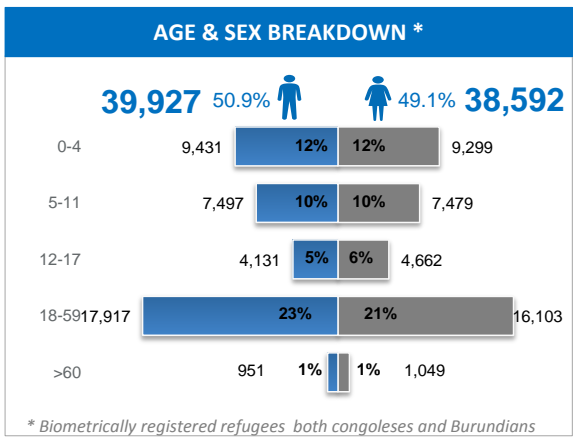
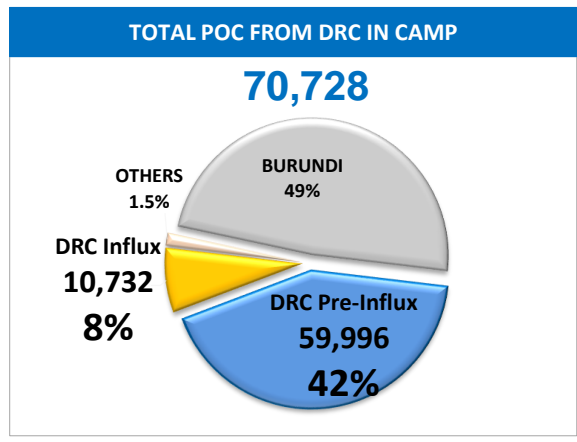


KEY FIGURES

SITE DETAILS

Opening day : 16 November 1996
 Region/District : Kigoma / Kasulu
 Coordinates : Lat 4°12'44.951"S
 Lon 30°23'22.191"E
 Camp Extent : 1,199.8 Hectares
 # of Partners : 19 Partners



PROTECTION

of individuals who received MSR support (PSS, legal, medical and safety)

Target : 300
 Current : **193** ❌
 Gap/Target : **36%**

EDUCATION

% of children aged 6-14 yrs enrolled in primary education

Target : 75%
 Current : **92%** ✅
 Gap/Target : **No gap**

HEALTH

Crude Mortality Rate (CMR) - per 1,000 population/month

Target : 0.7
 Current : **0.4** ✅
 Gap/Target : **No gap**

WASH

litres of safe drinking water per persons per day

Target : 20
 Current : **18** ⚠️
 Gap/Target : **8%**

FOOD

% of refugees receiving timely monthly food assistance

Target : 100%
 Current : **99.9%** ⚠️
 Gap/Target : **0.2%**

SHELTER

% of households living in adequate dwellings (Transitional Shelters)

Target : No Fund
 Current : **92%**
 Gap/Target : **N/A**

PROTECTION

% of at risk children identified screened and registered

Target : 100%
 Current : **100%** ✅
 Gap/Target : **No gap**

EDUCATION

% of children aged 15-18 enrolled in secondary education

Target : 50%
 Current : **52%** ✅
 Gap/Target : **No gap**

HEALTH

Under 5 Mortality Rate (U5MR) - per 1,000 population/month

Target : 1.5
 Current : **0.9** ✅
 Gap/Target : **No gap**

WASH

% of households with family latrines

Target : 40%
 Current : **63%** ✅
 Gap/Target : **No gap**

FOOD

% of required food quantity distributed (2,100 kcal)

Target : 100%
 Current : **83%** ⚠️
 Gap/Target : **17%**

SHELTER

of educational facilities constructed or improved

Target : No Fund
 Current : **0**
 Gap/Target : **N/A**

✅ Target reached or exceeded ⚠️ Target borderline (≥75% of the target) ❌ Target not met (<75% of the target)

