

Angola

29 August 2017

In Lóvua, there are currently **1,495 refugees living in the settlement**, the next relocation is scheduled for 31 August from Cacanda reception centre.

A Child Friendly Space has been established in Lóvua with **264 children out of 754 attending in the first week of operation.**

Malaria cases have decreased, however due to the start of the rainy season this trend is expected to invert.

KEY FIGURES

75%

Of Congolese refugees in Angola are women and children

32,980

Biometrically registered Congolese refugees in Dundo area (22 August 2017)

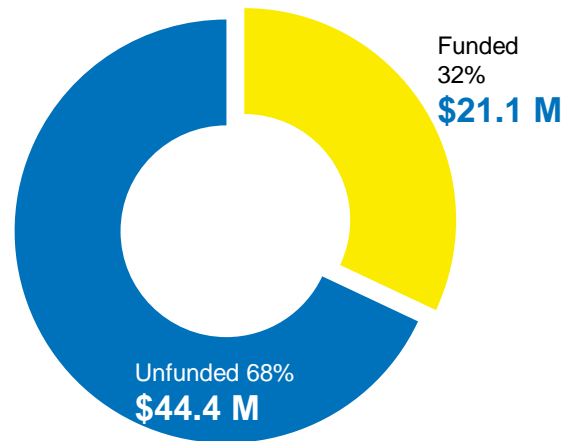
50,000

Inter-agency planning figure for Congolese refugees from the Kasai region in northern Angola by the end of the year

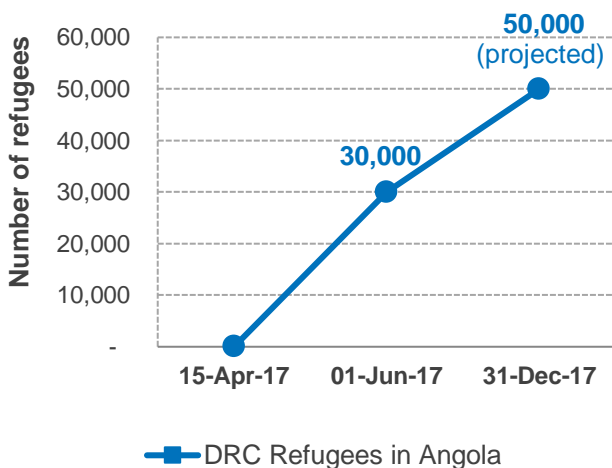
FUNDING (AS OF 29 AUGUST)

USD 65,507,610

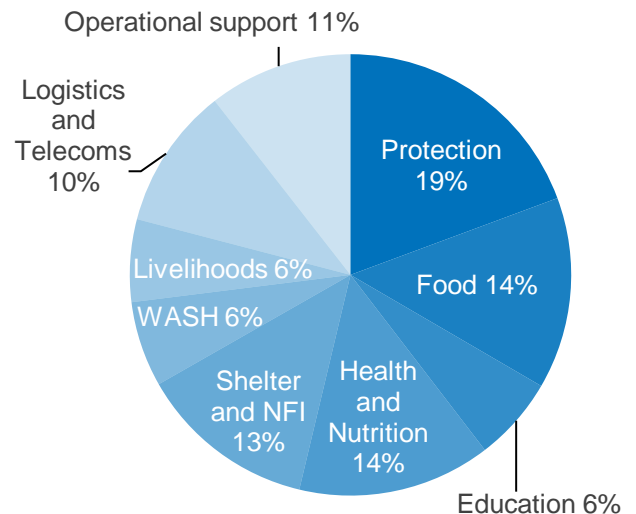
requested for Angola Inter-agency Refugee Response

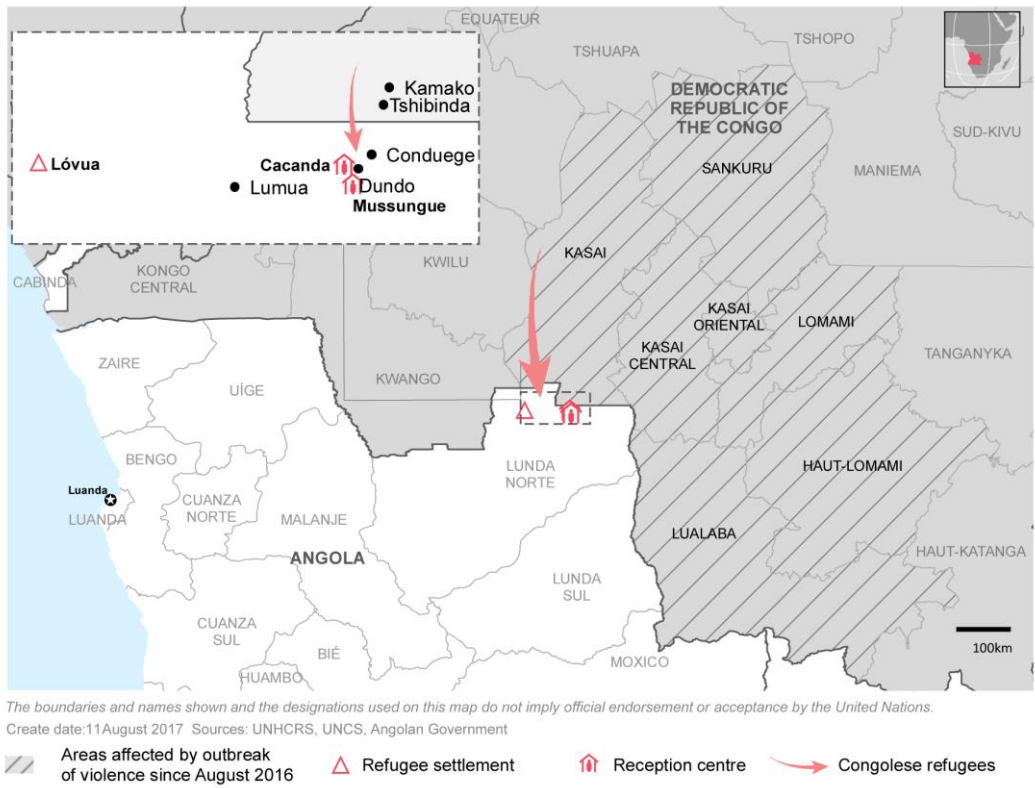


POPULATION TRENDS



FINANCIAL REQUIREMENTS





Operational Context

The outbreak of violence in the Kasai region of the Democratic Republic of the Congo (DRC) in March 2017 triggered the internal displacement of some 1.3 million persons and the flight of over 32,000 refugees into Lunda Norte Province of Angola. Refugees have reported generalized violence, mass killings, mutilations, burning of property, destruction of villages, schools and churches, rape of women and girls and human rights abuses as well as the shortage of food and the lack of access to basic services and goods. While refugees continue to arrive in Lunda Norte, the number of arrivals per day has decreased significantly since July 2017. Interviews with newly-arrived refugees indicate that the main roads to the border are largely blocked forcing people to enter Angola through unofficial border entry points.

The DRC-Angola border serves as a main artery for trade between the two countries. While the border is closed to trade and commerce, the Government of Angola (GoA) has maintained an open door policy to welcome any Congolese nationals fleeing as a result of the civil unrest. As the situation remains volatile in the Kasai region, humanitarian agencies in Angola have developed a response plan to assist an influx of 50,000 refugees by end December 2017. The interagency humanitarian response to the existing nearly 33,000 Congolese refugees covers the areas of protection, emergency shelter, food and nutrition, non-food items, water, sanitation, hygiene, health and emergency education until the end of 2017. Special attention is being paid to some 500 children at risk, 1,400 single heads of household, 122 refugees with disabilities and 100 elderly persons.

The relocation of Congolese refugees living in Mussungue reception centre to the new Lóvua settlement, 94 km west of Dundo, took place from 8 – 13 August. A total of 1,495 refugees were relocated to Lóvua during this time. On 31 August the relocation from Cacanda reception centre to Lóvua will start with the relocation of some 38 families. Due to lack of available heavy machinery, the challenges of opening primary and secondary roads remains a major constraint in the development of Lóvua settlement, this has been causing some delays on the relocation process of the refugees living in the overcrowded Cacanda reception centre.



First refugee families arriving to the recently established Lóvua settlement, after leaving behind Mussungue reception centre. © UNHCR / Rui Padilha.

Achievements



PROTECTION

Achievements and Impact

- **Registration:** As of 22 August, the total number of biometrically registered refugees from the Kasai region of DRC in Northern Angola stands at **32,980**. The slight decrease in the latest population figure is due to the recent deactivation of refugee records for those who did not show up at the time of the relocation from Mussungue to Lóvua.
- The refugee population figure will continue to reflect inactivation of individuals who do not show up for two consecutive general food distributions as per standard operating procedures; these figures will also reflect new births and reunification of families currently in Cacanda.
- In Lóvua, there are currently 1,495 refugees living in the settlement, of which 754 are children. Cacanda reception centre has a total of 7,182 residents. The relocation exercise from this centre will start on 31 August; it is planned that some 38 refugee households will be relocated to Lóvua.
- **Child protection:** The Child Friendly Space (CFS) in Lóvua settlement witnessed attendance of 264 children in the first week of operation. In Cacanda reception centre, 844 children attended during the week. A new CFS will be established in Zone B village 2 to address the needs of the children in Zone B.
- Child protection partners facilitated the reunification of 4 children with their parents/relatives. The children were staying in the temporarily shelter for Unaccompanied children in Cacanda reception centre.
- **Sexual and gender based violence (SGBV):** During the reporting period, protection partners identified 17 cases of SGBV in Cacanda reception centre: these included eight cases of domestic violence, one case of psychological abuse and eight cases of forced marriage involving minors. Discussions are ongoing with the refugee community in order to identify the leading causes of early marriage – efforts to sensitize and raise awareness among refugees will continue with the aim to change their attitude. Follow-up of individual cases is ongoing as well as family and community mediation activities.
- **Border monitoring:** Protection partners continue to conduct border monitoring missions to Chissanda. Close collaboration with border authorities has confirmed that voluntary returns to the DRC are taking place. Exact figures are difficult to establish as movements recorded at the border include all individuals crossing into the DRC: Congolese who were not registered as refugees as well as those who were. Protection partners conduct regular interviews with newly arrived refugee families in Cacanda reception centre in order to document the situation in the places of origin and conditions of the journey.
- **Freedom of Movement:** A courtesy visit to the Police was carried out in Lóvua Municipality with the aim to discuss refugee movements between Lóvua and the

surrounding villages. The police ensured that all registered refugees have freedom of movement although they advised against travelling at night for security reasons.

Identified Needs and Remaining Gaps

- The protection sector is working closely with relevant partners to finalize a SGBV referral pathway. The sector also envisages strengthening of partner capacity, law enforcement and border authorities through trainings and on-the-job guidance as relevant. The refugee community will be engaged as part of the SGBV prevention and response effort. Following the relocation of refugees from Mussungue to Lóvua settlement, community activities are planned through relevant partners to ensure the engagement of refugees in prevention and response to SGBV and other community matters.



FOOD SECURITY AND NUTRITION

Achievements and Impact

- **General food distribution:** Food partners distributed dry fish donated by the Government of Angola to refugees registered in Cacanda reception centre.
- **Nutrition:** Nutrition partners screened 1,916 children under the age of five in Cacanda reception centre: 0.16 per cent had Severe Acute Malnutrition (SAM) and 0.26 per cent Global Acute Malnutrition (GAM).
- In Lóvua, 146 children under five were screened: no signs of malnutrition were found, the indicators are considered as stable.



HEALTH

Achievements and Impact

- **Primary health care and medical consultations:** General consultations have greatly decreased (from 1,541 cases to 962 cases). In Cacanda the main morbidity factor was malaria 29 per cent, followed by Upper Respiratory Tract Infection (URTI) 21 per cent, osteo-muscular pain 11 per cent and non-bloody diarrhoea 10 per cent. In Cacanda, non-bloody diarrhoea decreased to 71 cases, down from 118 cases during the previous week. In Lóvua, the main morbidity was linked to URTI (20.5 per cent), followed by malaria (15.9 per cent) and osteo-muscular pain (15.2 per cent). Dressings represent 26.7 per cent of the total consultations.
- Malaria cases have globally decreased, however due to the arrival of the rainy season this trend is expected to invert, which would reflect an increase of Malaria cases.
- **Preparedness:** Health partners conducted a joint visit to Lóvua to assess the current health status and challenges. Health emergency preparedness regarding cholera,

malaria and meningitis is ongoing. Medications and tests are available at the settlement clinic; plans are in place to purchase a stock of medication for the last three months of the year.

- **Sexual reproductive health (SRH):** In Cacanda, 32 persons received Antenatal Care (ANC) consultation and two Postnatal (PNC) consultations. In Lóvua, eight persons received ANC consultations and one PNC consultation.
- Health partners handed over a variety of SRH kits to hospitals and health centres in Dundo and Lóvua municipality. This was intended to reduce maternal and neo natal morbidity and mortality, and to keep women and babies safe and health.
- **Referral care:** Twenty-seven referrals to secondary health care (23 per cent more than last week), some 85 per cent of the referrals from Cacanda and 15 per cent from Lóvua.
- **Mental health:** Mental health activities continued this week; a total of 14 mental health consultations and 6 group sessions were conducted.
- **Cacanda:** Anti-larva control in Cacanda was resumed. A similar exercise will start shortly in Lóvua around water distribution points and waste collection sites.
- **Hazards:** Snakes have been encountered by refugees in Lóvua. Although identified as non-venomous, the Provincial Health Department has no anti-venoms available in Lunda Norte. Health partners will discuss the issue with the Ministry of Health in Luanda.
- **Communication with Communities:** Health partners reached 7,800 persons of concern with key messages related to cholera prevention and protection of children during the relocation to Lóvua, as well as messages addressing malaria prevention and the appropriate use of mosquito nets.



WATER AND SANITATION

Achievements and Impact

- **Cacanda:** WASH partners are supplying around 17-20 litres of water per person per day (l/p/d), 14 dilapidated and/or filled latrines are being replaced with new facilities while roofing will be rehabilitated for all latrines in view of the start of the rainy season.
- **Lóvua:** Villages A1, A2, A3, B1, B2 and B3 are completed. Villages B3 and B4 are waiting for an access road for the provision of water through water-trucking. In the meantime, an extra water tank located at the main road of the site, opposite village A2, serves the water needs of refugees in these villages. Water-trucking provides water for the refugee population as well as the temporary workers with an average of 20-30 l/p/d. Two focus group discussions were held addressing the design of communal and household latrines, proper use of latrines, the most suitable location within the plots and maintenance/cleaning of these facilities.
- **Coordination:** The WASH coordination meeting took place in Lóvua where progress and experiences in the first six villages were shared. All inhabited villages will have complete WASH facilities installed

- **WASH Knowledge, Attitude and Practice (KAP):** WASH KAP studies were held in Dundo, Cacanda reception centre and Lóvua settlement to establish a baseline against which to track progress of the population's WASH knowledge, attitudes and practices.

Identified Needs and Remaining Gaps

- In Lóvua settlement, two villages (B3 and B4) need access roads to allow the regular supply of water by trucks.



SHELTER AND NFIS

Achievements and Impact

- **Lóvua:** A sixth village within Zone B has been plotted out and labelling of these plots is in progress. The location for the last three villages in the Zone B has been surveyed. Six tents were assembled while minor improvements took place in the WASH facilities of the arrival centre.
- A monitoring mission with the participation of technical partners was conducted to Lóvua to ascertain the potential constraints related to the development of the site. Provision of basic services including health and sanitation were among the issues reviewed. The mission agreed that primary and secondary roads should be opened to facilitate the work of the hired workforce to speed-up the development of the settlement. The mission team agreed on the use of manual workforce to open secondary roads in preparation for the relocation of refugees from Cacanda starting next week.
- **Livelihood activities:** Refugees are requesting seeds to initiate their crop growing activities. Partners will discuss the availability of seeds and the feasibility of such distribution.

Identified Needs and Remaining Gaps

- Due to lack of available heavy machinery, the challenges of opening primary and secondary roads remains a major constraint in the development of Lóvua settlement. Shelter partners are in the process of engaging the services of suitable equipment to expedite road opening and other activities on the site.



ENVIRONMENT AND ENERGY

- **Communicating with communities:** A volunteer awareness-raising group has been established and is disseminating key messages on environmental issues such as optimizing use of firewood, preservation of the forest, waste management, use and maintenance of solar lamps in Lóvua settlement. This group is composed of eight young refugees (6 men and 2 women) who carry out door to door visits, surveys and provide explanatory sessions on the Angolan environmental legislation.
- **Waste management and vector control:** The emptying of refuse pits in Cacanda centre started on 21 August and is being implemented through close cooperation with Dundo city administration through the municipal waste collection company. The solid waste will be disposed of through Dundo's waste disposal site. Vector control has improved since the distribution of garbage bags in Cacanda centre.

Identified Needs and Remaining Gaps

- An energy partner will begin its activities in mid-September, starting with minimum required interventions for energy saving practices and techniques.
- The first phase of solar street light installation is ongoing. As the sixty solar street lights expected to arrive in Angola in mid-September will not cover the community lighting needs for the Lóvua settlement, partners are exploring ways of ensuring additional street lights.
- There is need for the improvement of solid waste management in Lóvua settlement, transiting from emergency refuse pits to a controlled and safe waste collection and waste disposal mechanism. Discussions are ongoing with Lóvua administration for identification of a waste disposal site.

Working in partnership

- Humanitarian and development partners, working on the ground and in the country on various projects, are actively supporting the Government of Angola to ensure adequate and effective response to the needs of the Congolese refugees. A weekly inter-agency coordination meeting is held in Luanda. In Dundo, weekly inter-agency meetings ensure a comprehensive and integrated operational response to the refugee situation. Sectoral working group coordination meetings on Protection, WASH, Health/Nutrition and Communication with Communities are also organized weekly in Dundo.

Partners in the response:

- Angolan Red Cross Society
- CARITAS
- CICAJ - Centro de Investigação Científica e Assessoria Jurídica
- FAO - Food and Agriculture Organization of the United Nations
- IOM - International Organization for Migration
- JRS - Jesuit Refugee Service
- LWF - Lutheran World Federation
- MAG - Mine Advisory Group
- MdM - Médecins du Monde
- MSF - Médecins Sans Frontières
- NCA – Norwegian Church Aid
- PIN - People in Need
- UNAIDS - The Joint United Nations Programme on HIV/AIDS
- UNDP - United Nations Development Programme
- UNDSS - United Nations Department for Safety and Security
- UNFPA - United Nations Population Fund
- UNHCR - United Nations High Commissioner for Refugees
- UNICEF - United Nations' Children's Fund
- UNRCO - United Nations Resident Coordinator's Office
- WFP - World Food Programme
- WHO - World Health Organization
- WVI - World Vision International

The [Angola Inter-Agency Refugee Appeal \(April – December 2017\)](#) is available on the [Angola Operational Data Portal](#). Agencies are very grateful for the financial support provided by donors who have contributed to their activities with un-earmarked and broadly earmarked funds, as well as for those who have contributed directly to the operations in Angola.

Special thanks to the Central Emergency Response Fund for their contributions to the inter-agency refugee response in Angola.

Special thanks to Denmark, Italy, the United States of America and private donors in Italy for their contributions to UNHCR's operations in Angola.

Financial requirements by agency:

| Organization | Total (USD) |
|---|-------------------|
| FAO Food and Agriculture Organization of the United Nations | 1,030,000 |
| IOM International Organization for Migration | 1,869,438 |
| JRS Jesuit Refugee Service | 1,574,790 |
| MAG Mine Advisory Group | 585,000 |
| UNAIDS The Joint United Nations Programme on HIV/AIDS | 400,000 |
| UNDP United Nations Development Programme | 2,550,000 |
| UNDSS United Nations Department for Safety and Security | 830,000 |
| UNFPA United Nations Population Fund | 1,367,414 |
| UNHCR United Nations High Commissioner for Refugees | 36,705,352 |
| UNICEF United Nations' Children's Fund | 8,499,703 |
| UNRCO United Nations Resident Coordinator's Office | 100,000 |
| WFP World Food Programme | 9,100,000 |
| WHO World Health Organization | 895,913 |
| Total | 65,507,610 |

CONTACTS

Markku Aikomus, Senior Regional External Relations Officer
aikomus@unhcr.org, Tel: +27 81 797 7456

Margarida Loureiro, External Relations/Reporting Officer
loureiro@unhcr.org, Tel: +224 945 416 383

Rui Padilha, Associate Information Management Officer
padilha@unhcr.org, Tel: +224 949 097 329

LINKS

[Angola Operational Data Portal](#)