

Total Active Registered Iraqis **64,258**

Standard Age and Gender

Age	0-4	5-11	12-17	18-35	36-59	60+	Total	%
Female	2,147	4,735	3,150	9,348	8,231	3,511	31,122	48.4%
Male	2,273	5,293	3,497	10,537	8,534	3,002	33,136	51.6%
Total	4,420	10,028	6,647	19,885	16,765	6,513	64,258	100%
	6.9%	15.6%	10.3%	30.9%	26.1%	10.1%		

Place of Origin

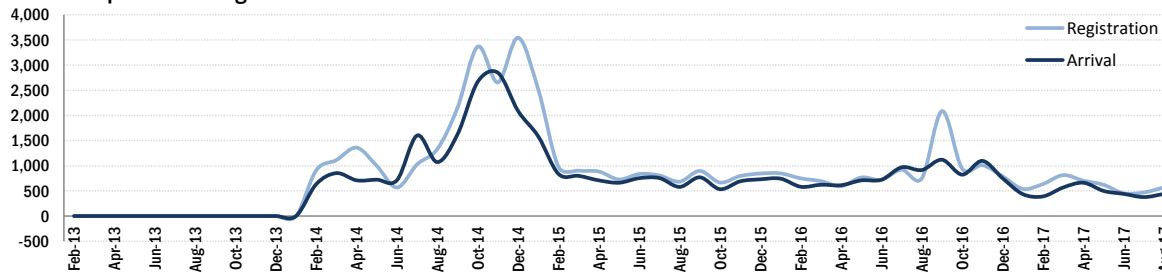
Baghdad	32,936	51.3%
Erbil	7,488	11.7%
Basrah	4,212	6.6%
Anbar	3,864	6.0%
Ninewa	3,731	5.8%
Dahuk	2,742	4.3%
Salah al-Din	1,366	2.1%
Thi-Qar	1,267	2.0%
Tameem	1,093	1.7%
Diyala	1,070	1.7%
Missan	590	0.9%
Muthanna	543	0.8%
Sulaymaniyah	517	0.8%
Babylon	466	0.7%
Wassit	392	0.6%
Najaf	302	0.5%
Qadissiya	221	0.3%
Kerbala	208	0.3%
Other	1,250	1.9%

Specific Needs

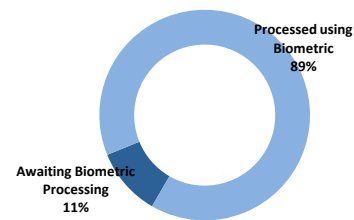
Serious medical condition	7,344	11.4%
Disability	2,649	4.1%
Specific legal and physical protection needs	2,076	3.2%
Woman at risk	1,802	2.8%
Child at risk	1,793	2.8%
Single parent	1,077	1.7%
Older person at risk	807	1.3%
Unaccompanied or separated child	118	0.2%
Total	17,666	27.5%

* An individual can have more than one specific need

Iraqi Arrival & Registration Trends since Jan 2013

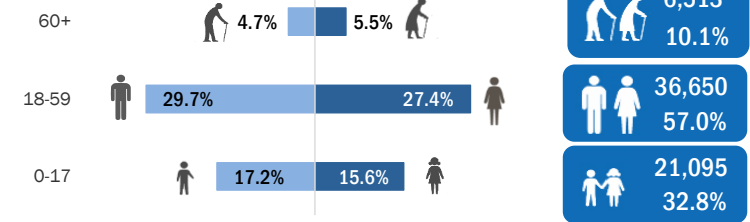


Biometric Statistics (IRIS)



UNHCR Jordan

Age-Gender Breakdown



Arrivals

	Arrival	Registration
Pre-2006	4,419	72,669
2006	3,490	4,689
2007	2,315	31,285
2008	1,204	9,761
2009	1,530	6,841
2010	2,180	7,980
2011	2,629	7,767
2012	2,797	4,088
2013	5,046	5,392
2014	17,119	21,541
2015	8,561	9,869
2016	9,357	10,561
2017	3,611	4,740

UNHCR Registered Iraqis

