

VASYR 2017 - PRELIMINARY FINDINGS

VULNERABILITY ASSESSMENT FOR SYRIAN REFUGEES



United Nations
World Food Programme



UNHCR
The UN Refugee Agency
مفوضية الأمم المتحدة لشؤون اللاجئين



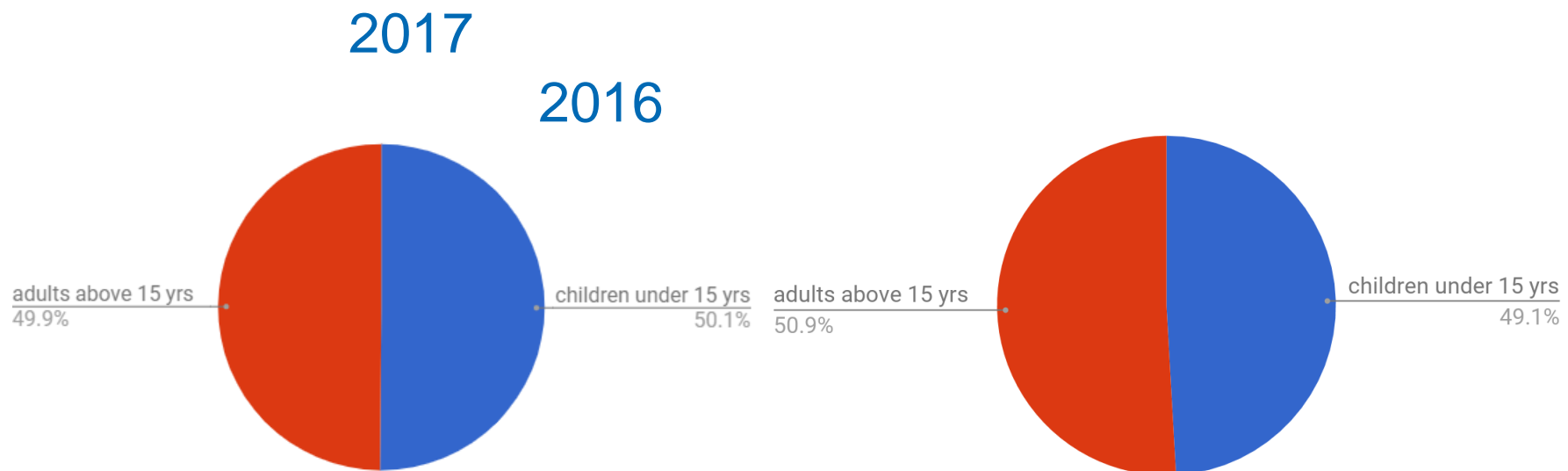
DEMOGRAPHICS: Household Size

Page 2

SMALLER HOUSEHOLD SIZES

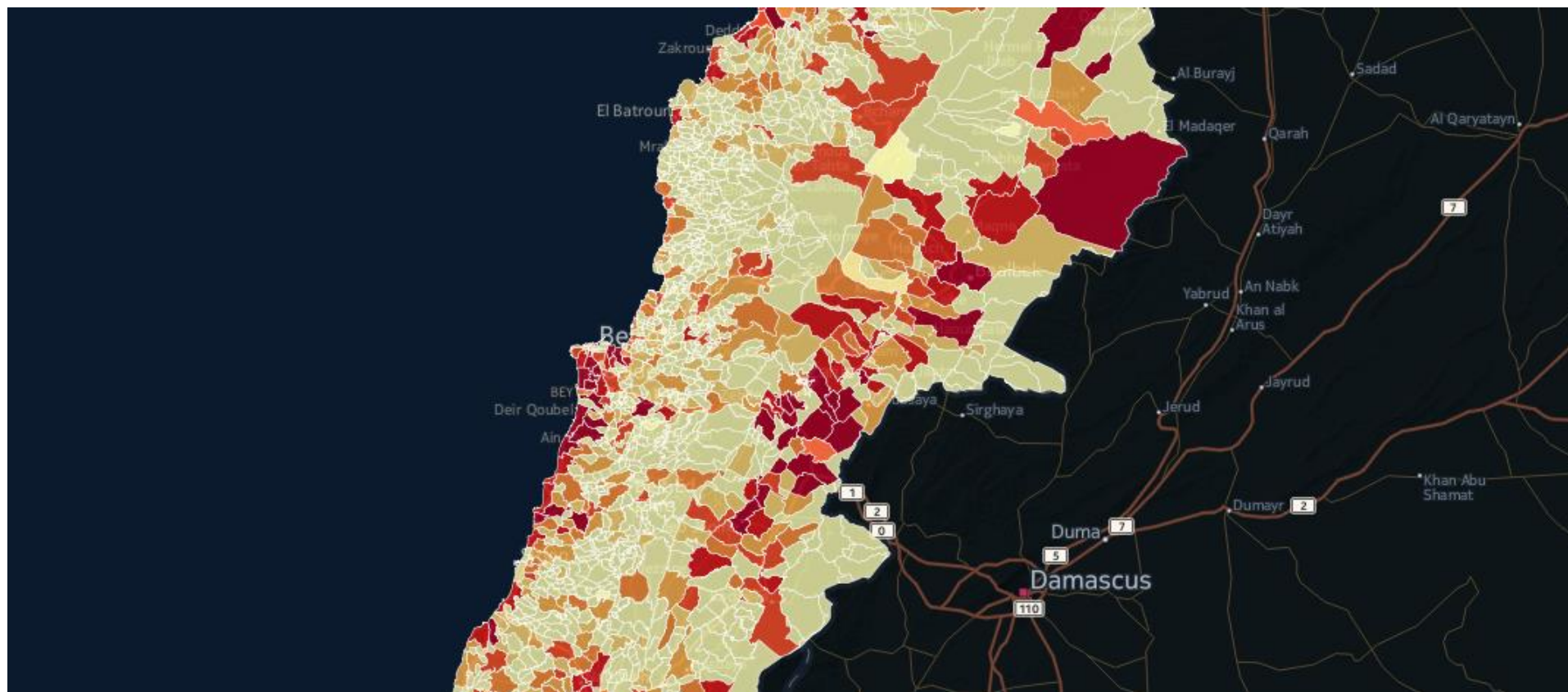
Mean Household Size: 4.9 ↓ (2016: 5.1, 2015 : 5.3)

Average Children per Household: 2.5 (↓ 2016: 2.7)



DISCLAIMER

**Preliminary findings may be subject to
change**

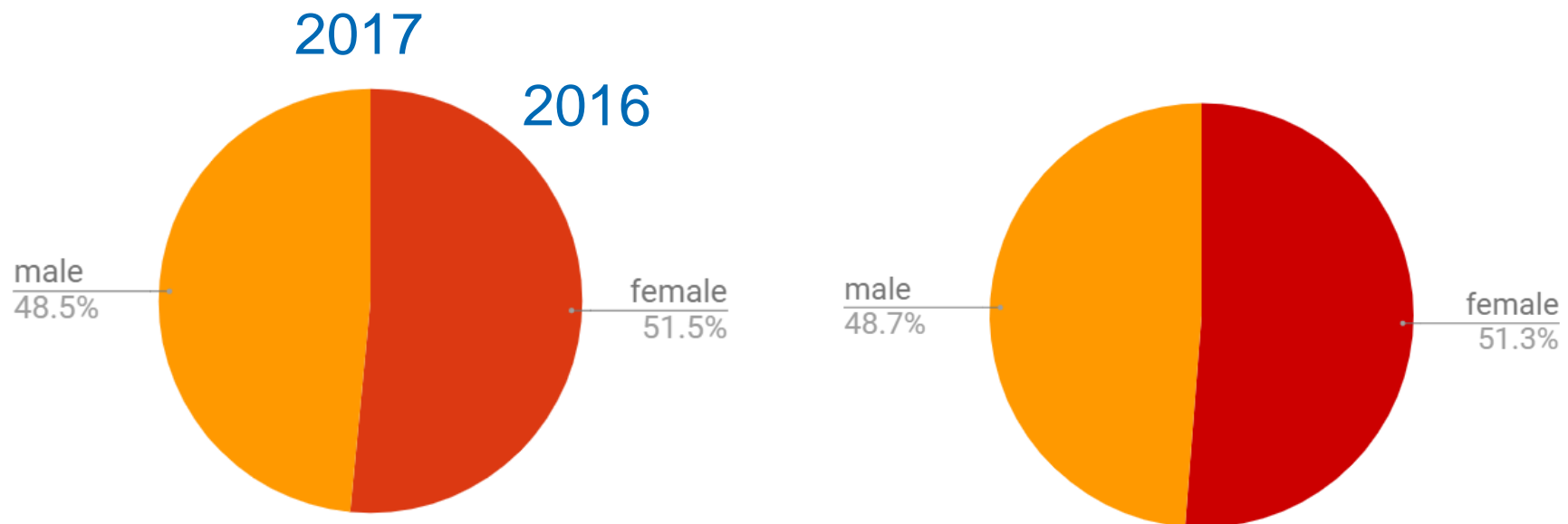


DEMOGRAPHICS: Gender Ratio

Page 5

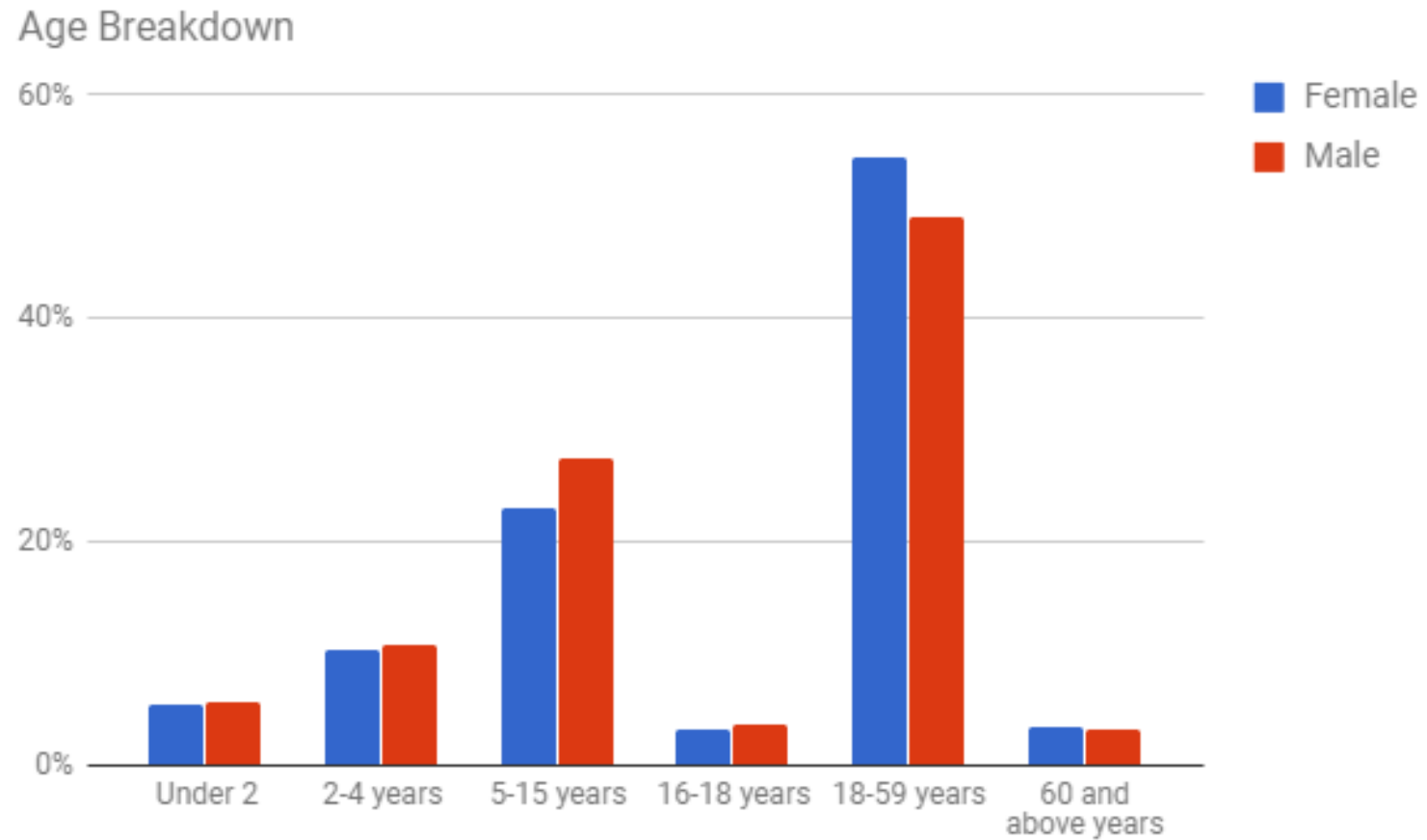
GENDER RATIO SIMILAR TO LAST YEAR

Gender Ratio (Female/Male) 1.06 \uparrow 2016: **1.05**, 2015: **1.30**)



DEMOGRAPHICS: Age Breakdown

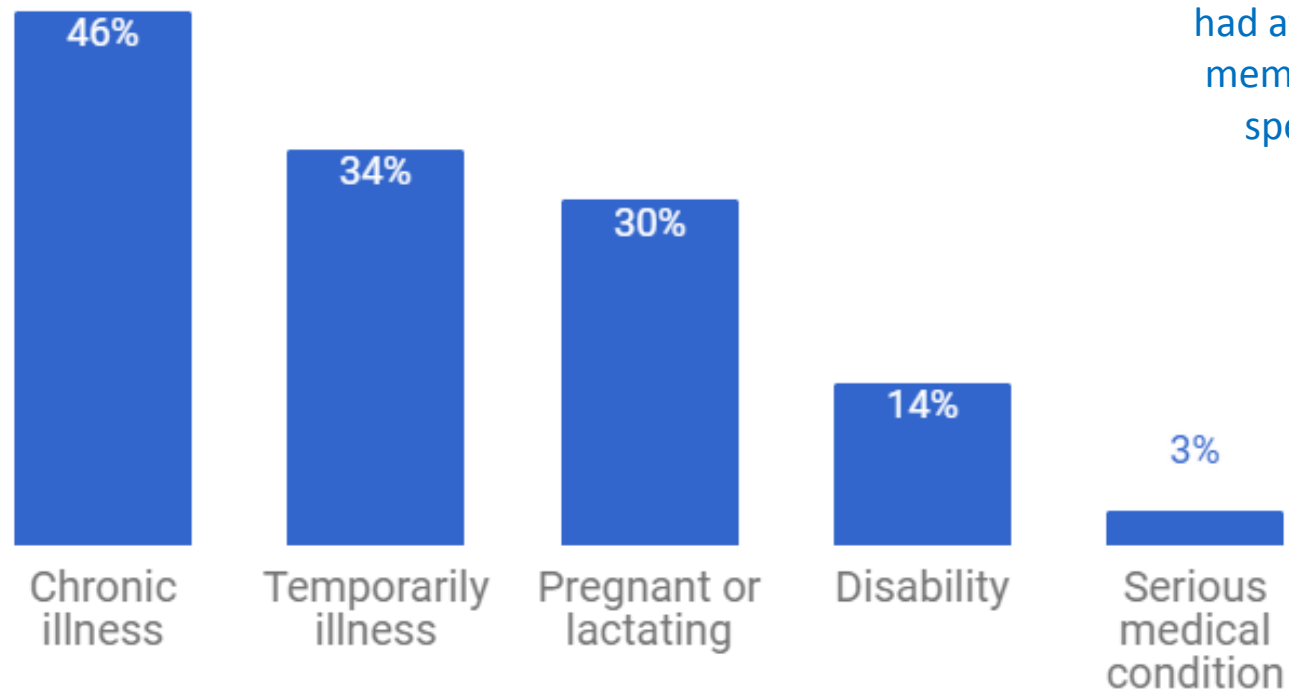
Page 6



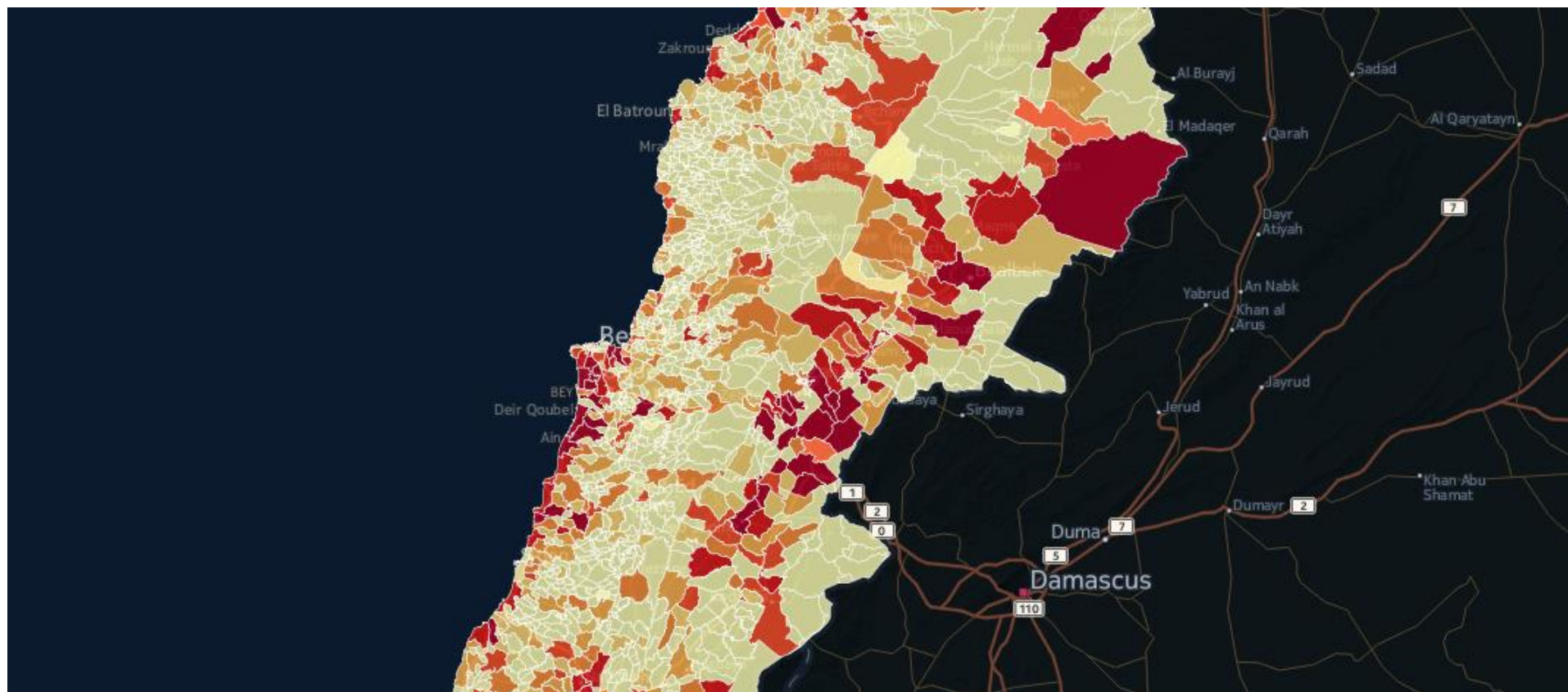
DEMOGRAPHICS: Specific Needs

Page 7

Households with at least one member...

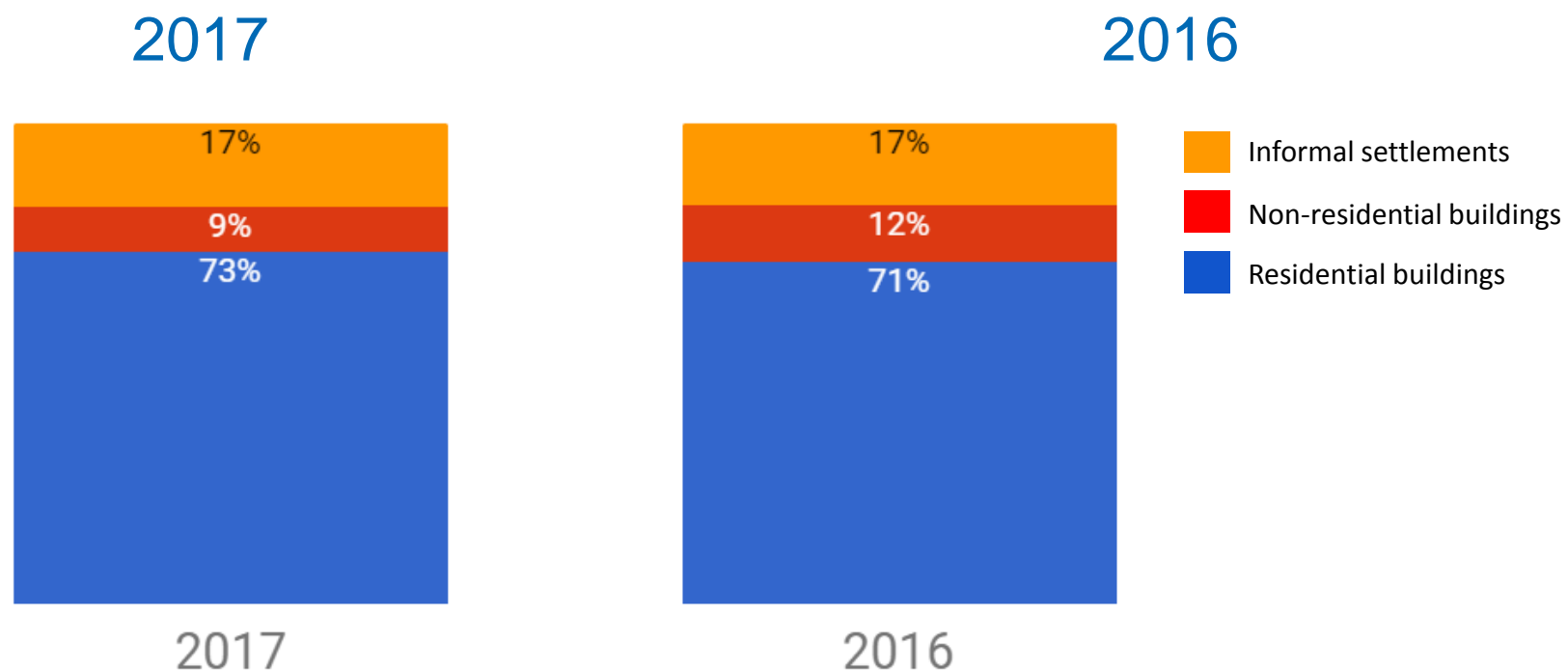


78% of HHs
had at least one
member with a
specific need



SHELTER: Type of Housing

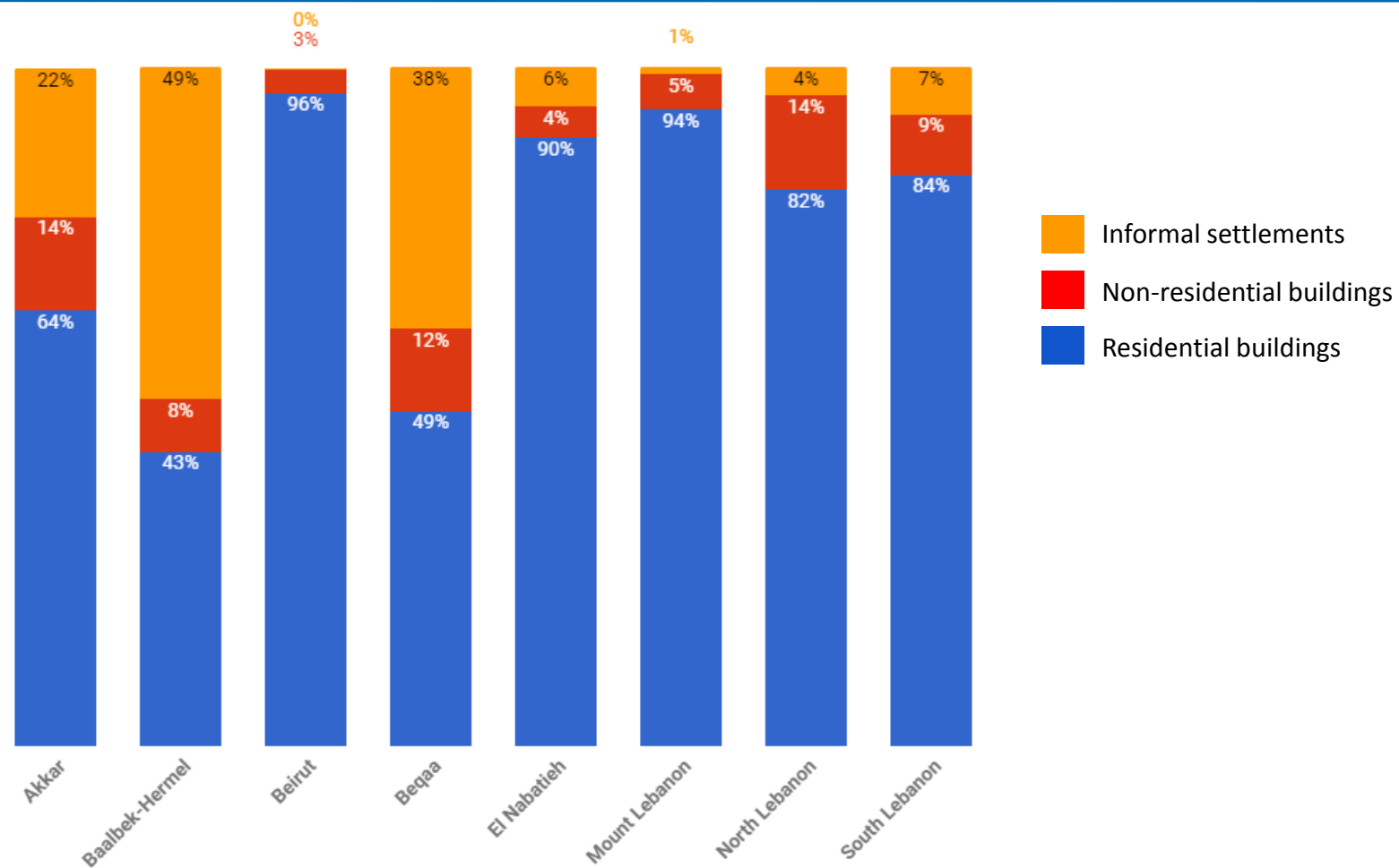
Page 9

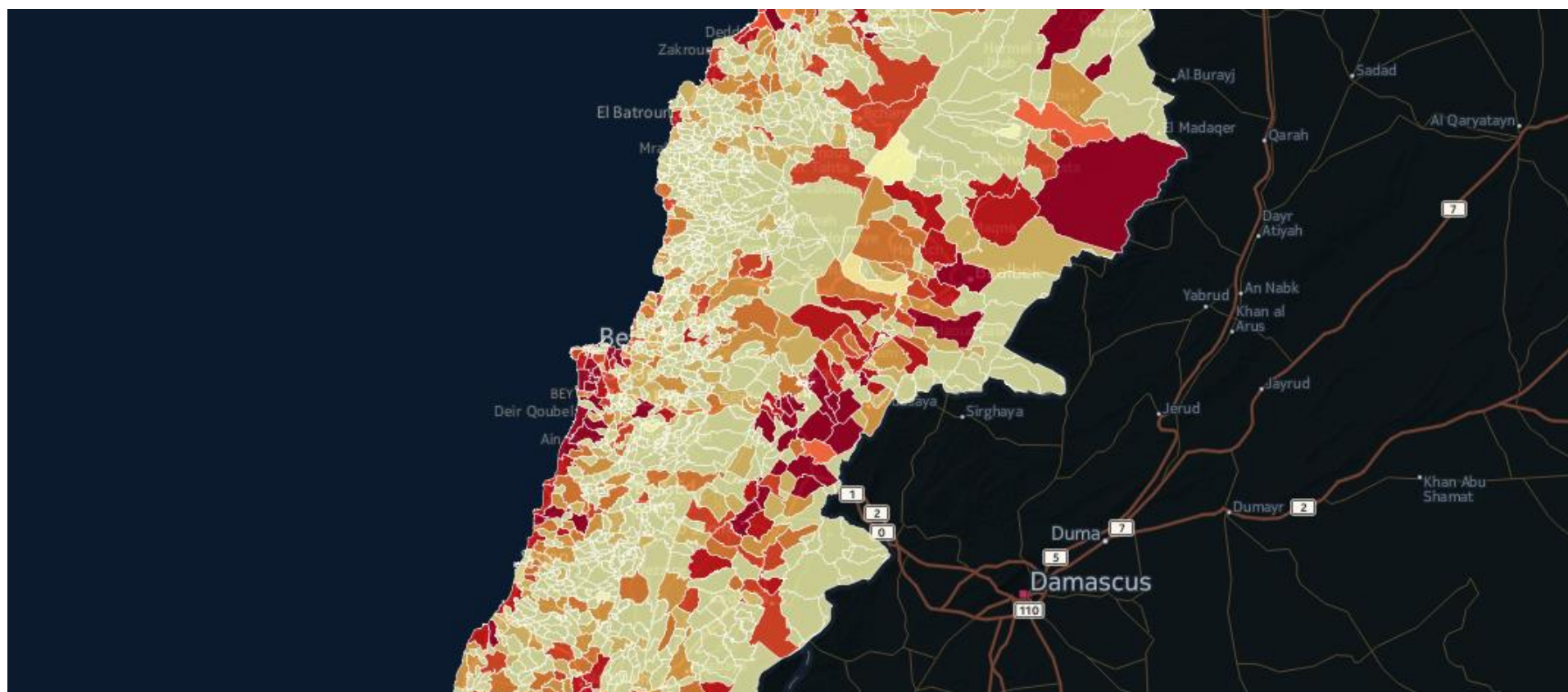


*Unclear whether reduction in % in non-residential buildings is indicative or due to enhancement in the way the question was asked.

SHELTER: Type of Housing by Governorate

Page 10





HEALTH: Need for Primary Health Care (PHC)

Page 12

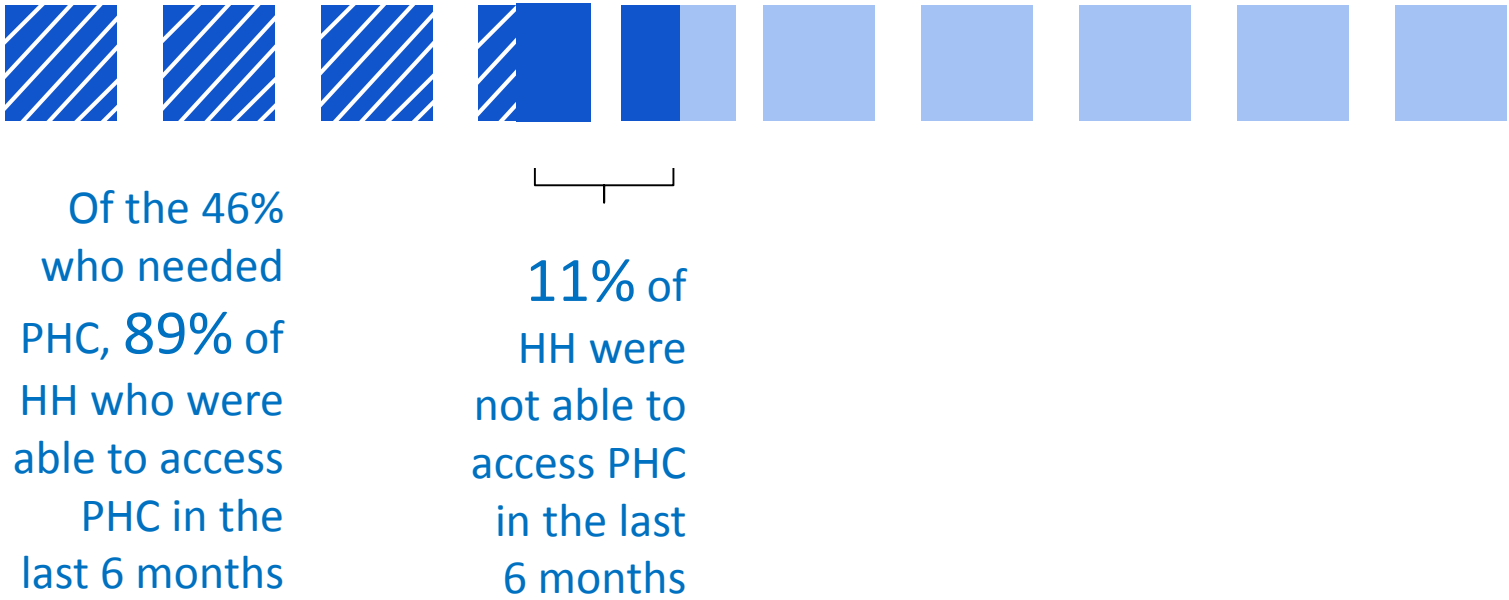


46% of HH had at least one
member who needed PHC in
the last 6 months

(2016: 47%)

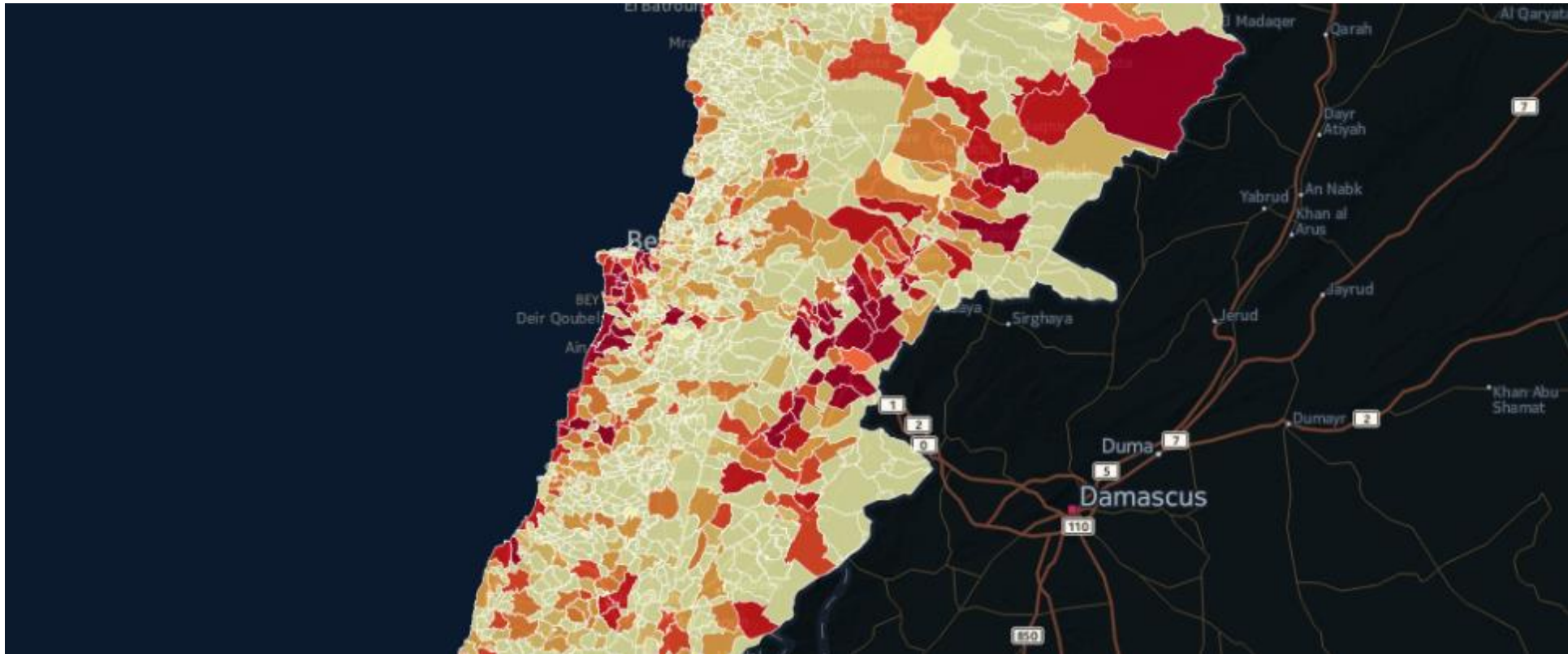
Question: Did any of your household members require primary health care in the last 6 months?

HEALTH: Access to Primary Health Care (PHC)



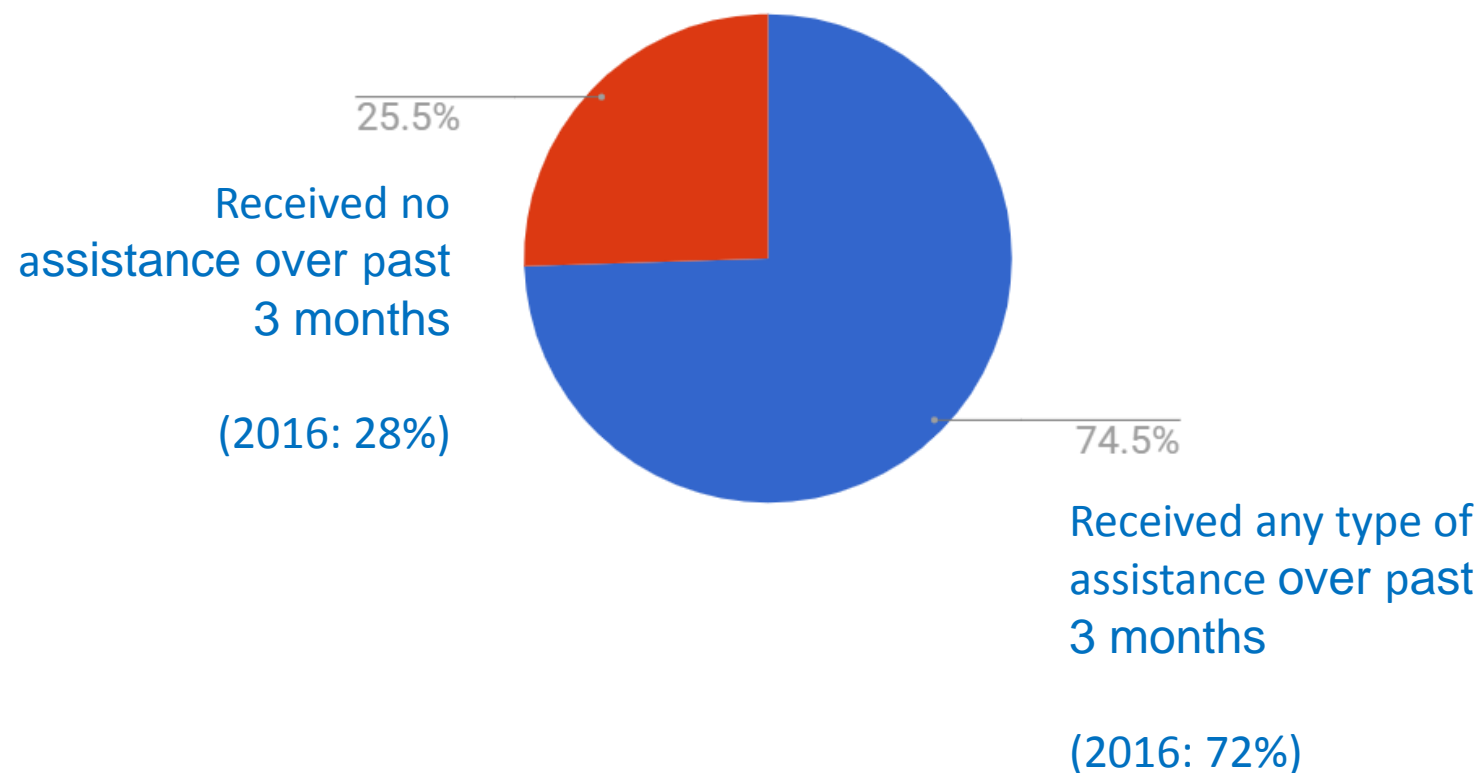
Question: Did you get the required primary health care assistance?

1 / %)



Percentage of population receiving assistance over past 3 months (self-reported)

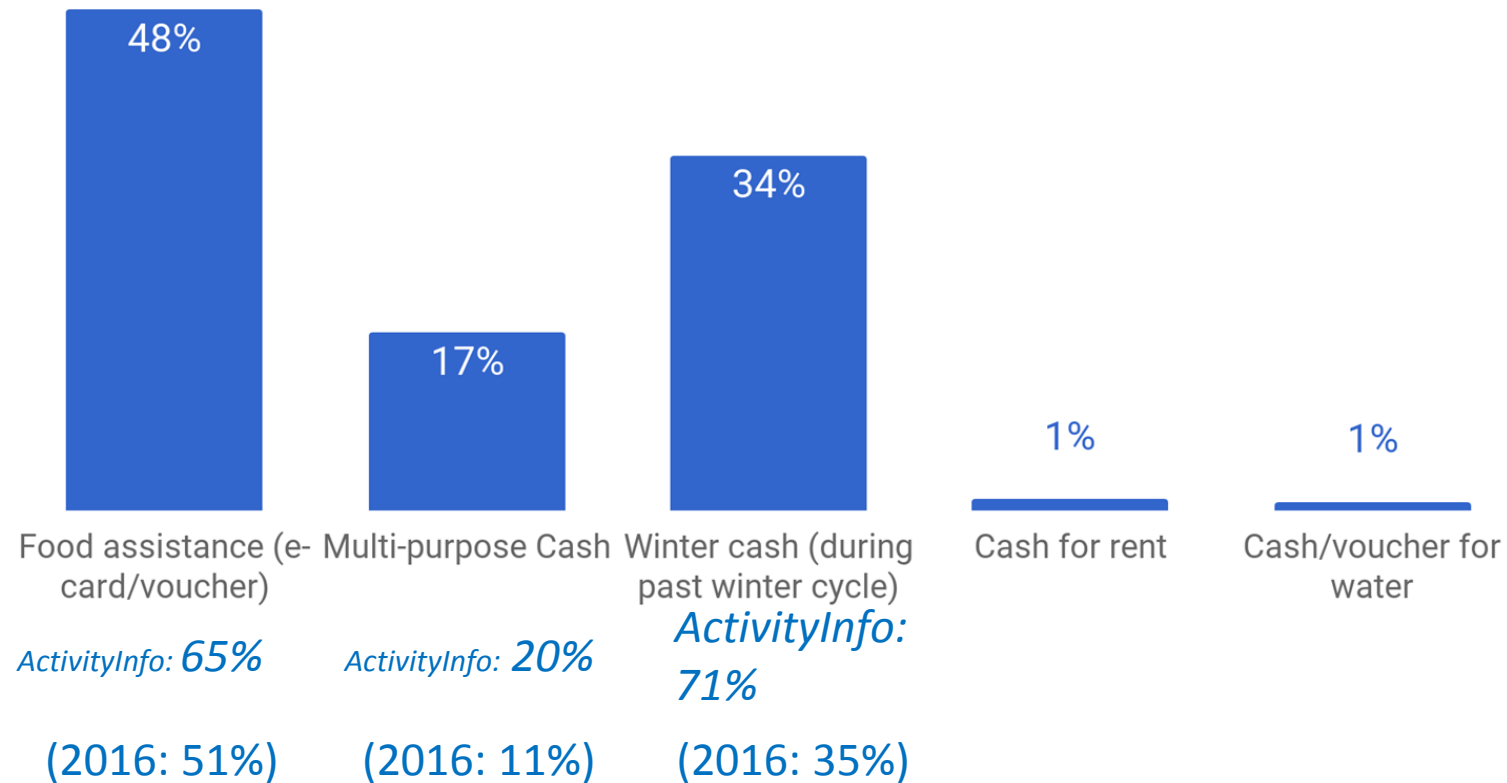
Page 15



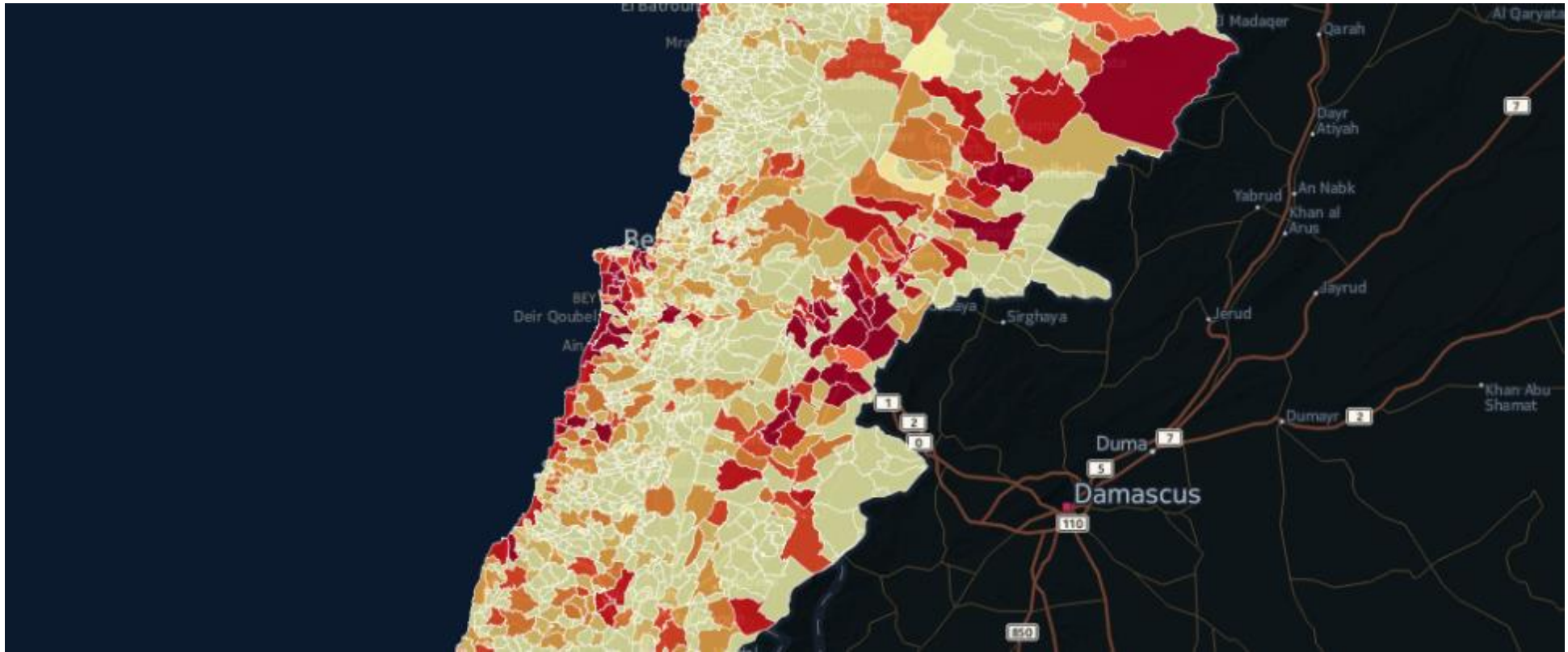
**This year, winter assistance was given as a lump sum in December (covering Jan-Mar), whereas last year it was given monthly.*

Percentage of population receiving different types of assistance over past 3 months (self-reported)

Page 16

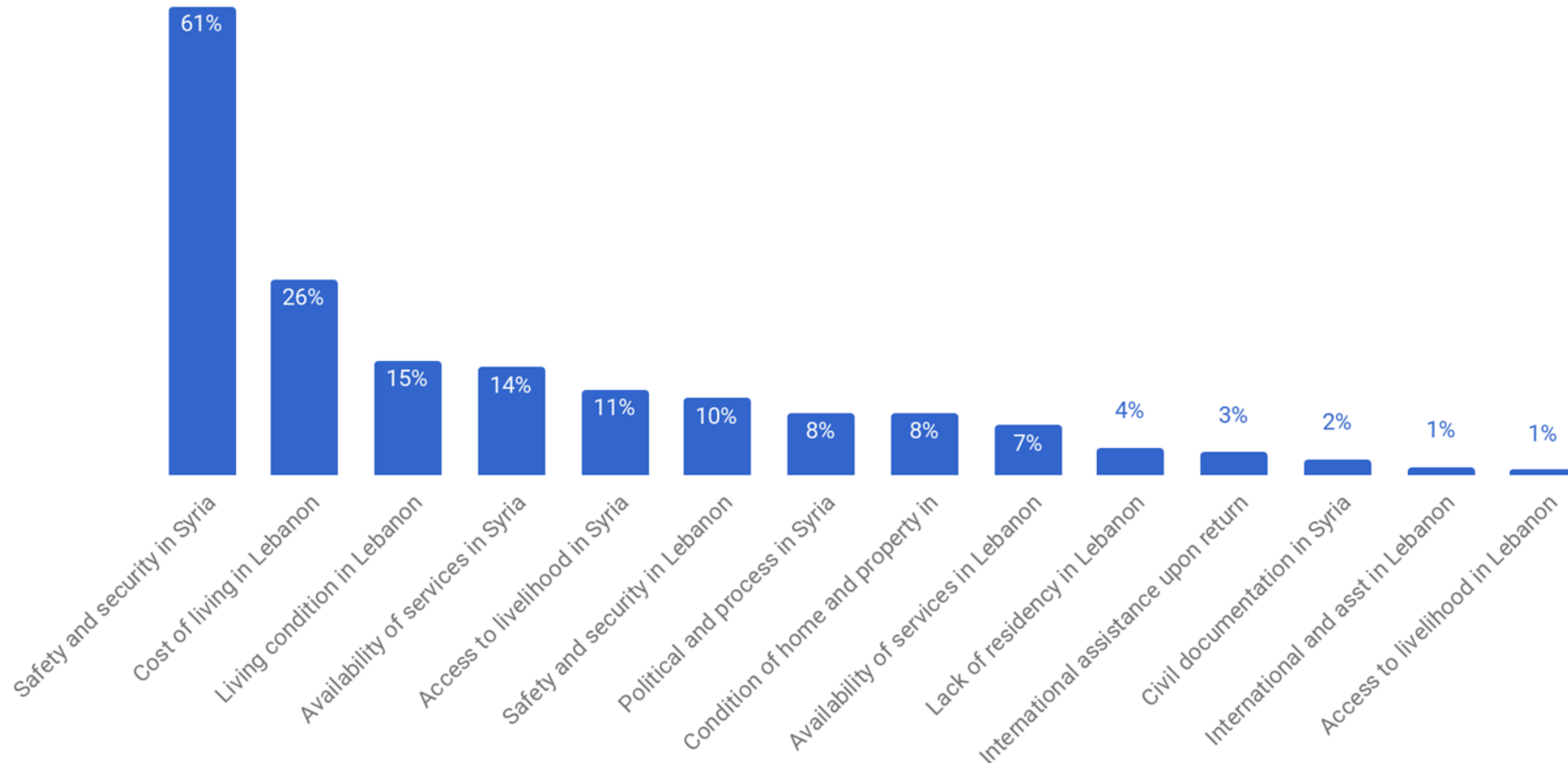


**This year, winter assistance was given as a lump sum in December (covering Jan-Mar), whereas last year it was given monthly.*



What factors would be most important for you in considering return to Syria?

Page 18

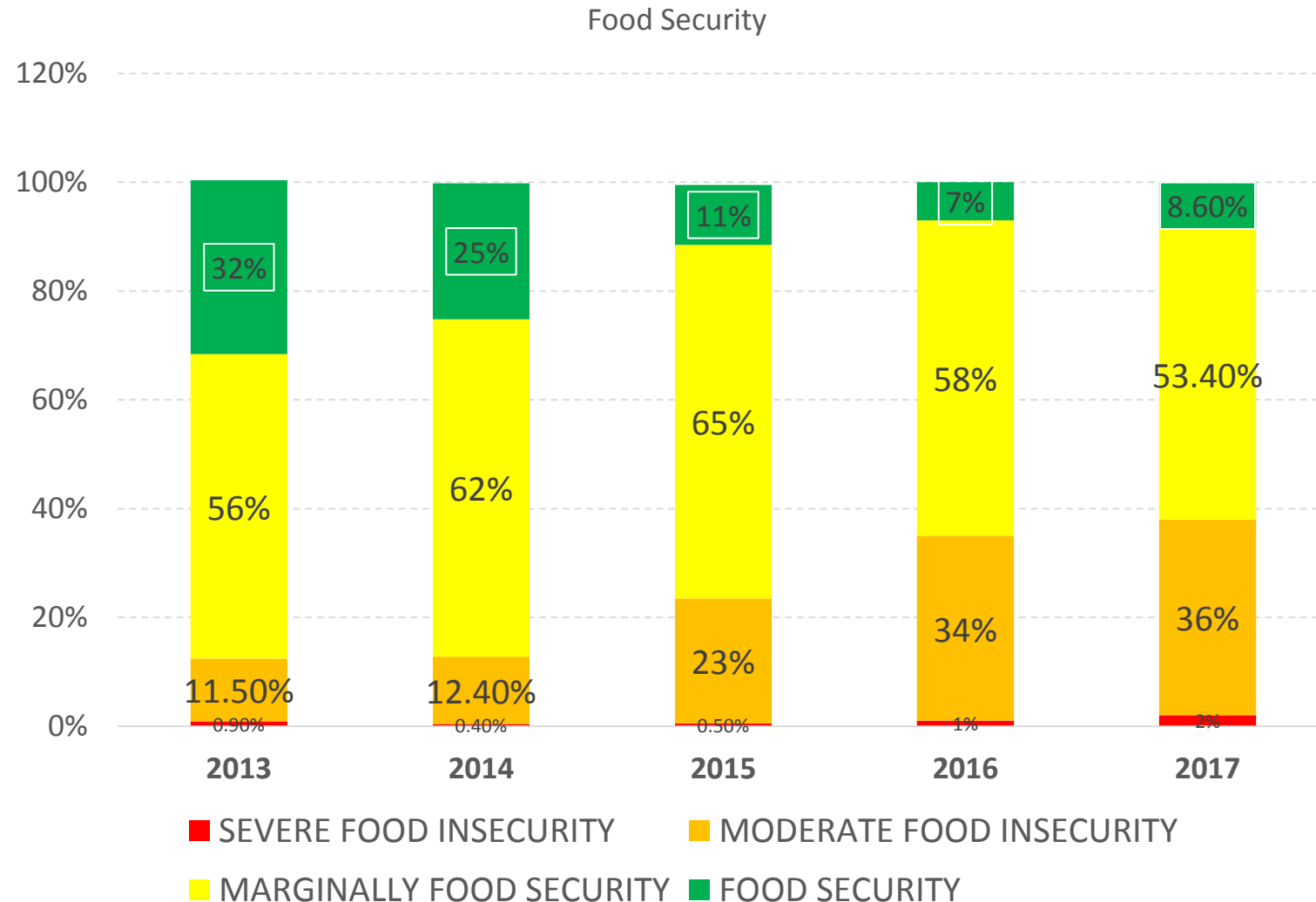


VASyR 2017

FOOD SECURITY RESULTS

WFP

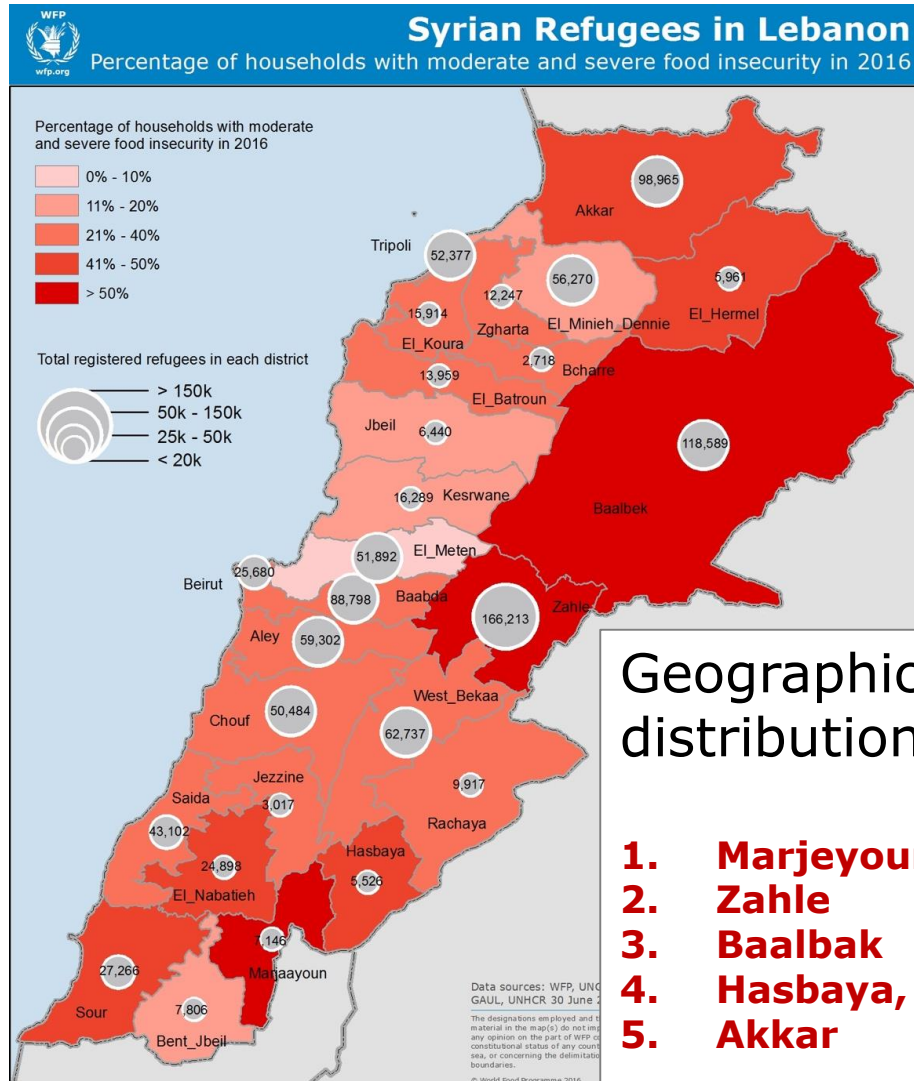
FOOD SECURITY TRENDS 2013-2017



- ▷ **Food insecurity remain relatively stable but still a concern with the slight increase in the worse off categories from 35 to 38%.**
- ▷ **3% of** marginally food secure households fell into moderate and severe food insecurity **due to protracted economic vulnerability**

FOOD INSECURITY GEOGRAPHICAL DISTRIBUTION

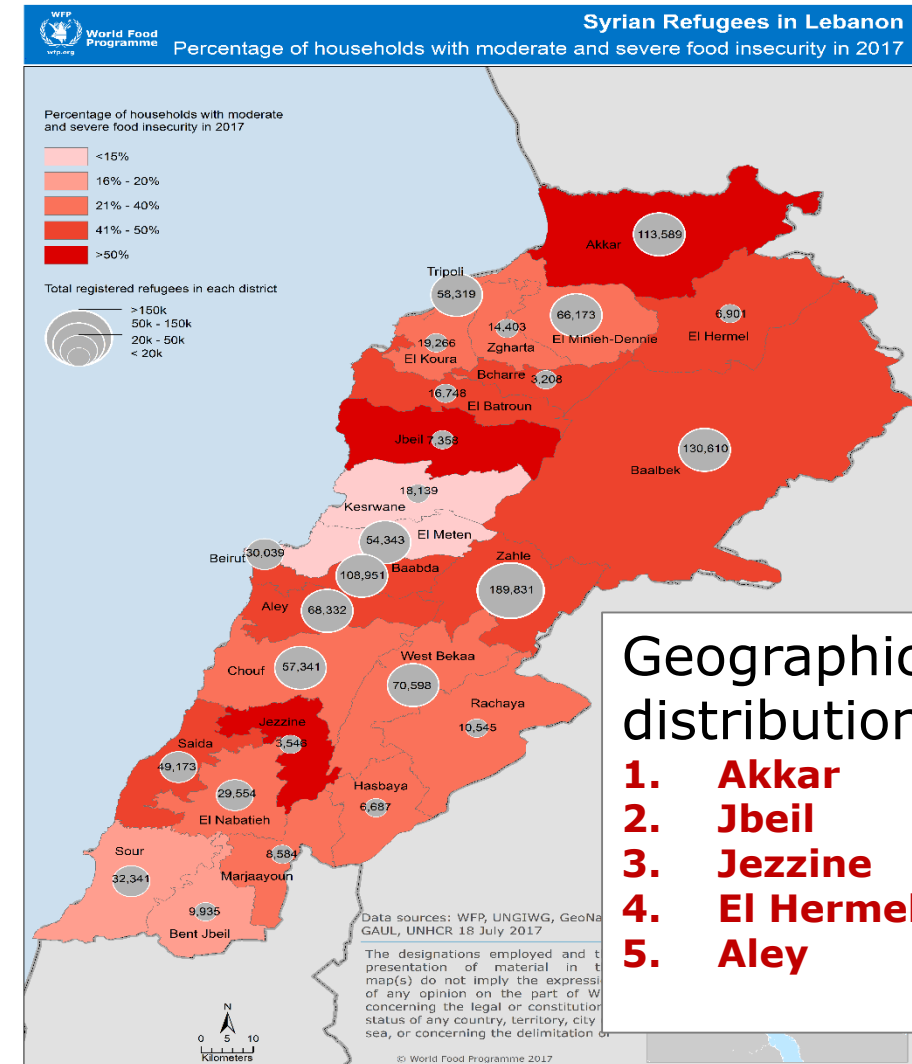
2016



Geographical distribution :

1. Marjeyoun
2. Zahle
3. Baalbak
4. Hasbaya, Sour
5. Akkar

2017



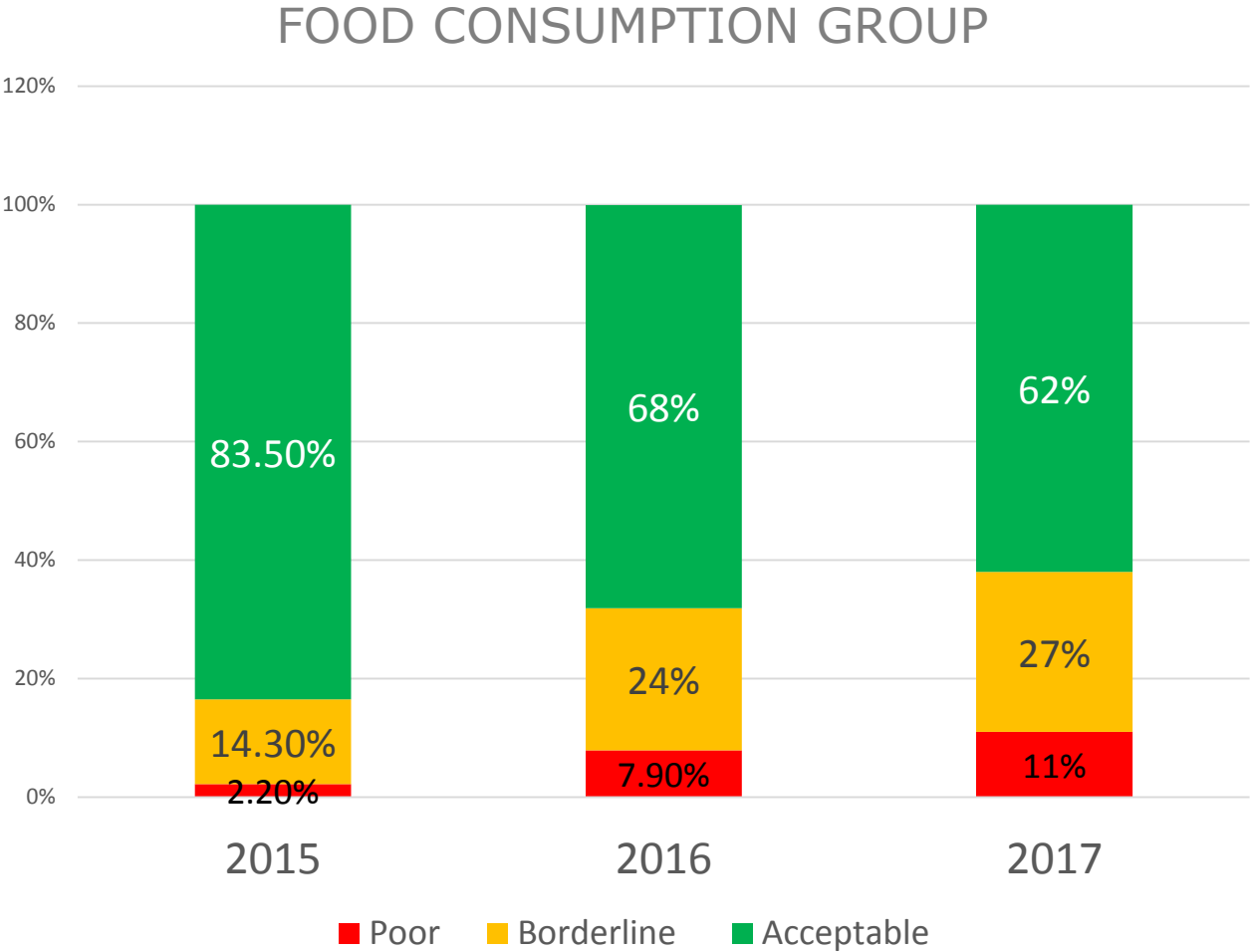
Geographical distribution :

1. Akkar
2. Jbeil
3. Jezzine
4. El Hermel
5. Aley

DETERMINANTS OF FOOD INSECURITY

Households are eating less

- ▷ Increase in the percentage of households with unacceptable food consumption



DETERMINANTS OF FOOD INSECURITY

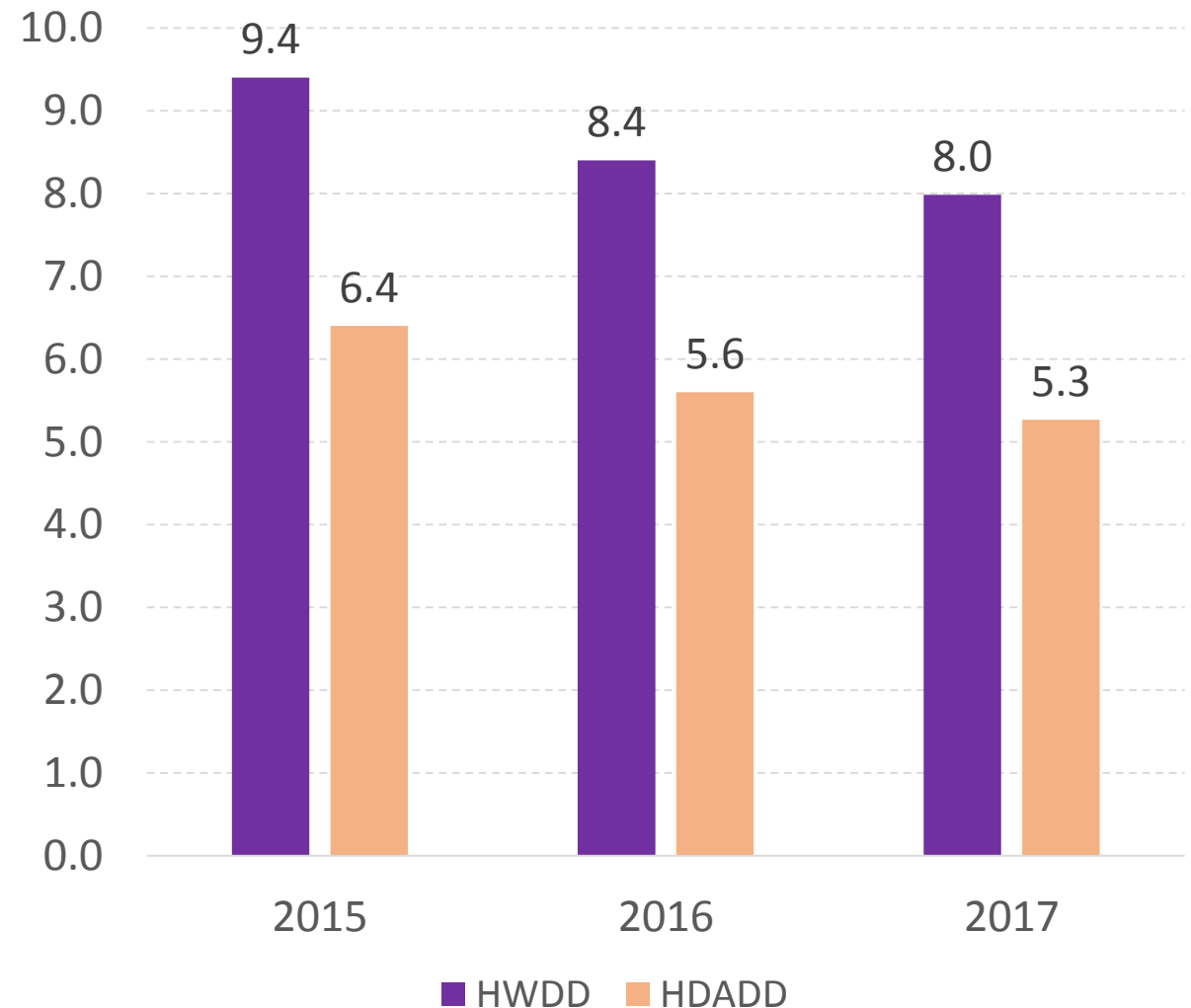
Dietary diversity is almost the same from 2016

Household Weekly Diet Diversity

Decreased by **0.4** food group **per week**

Household Daily Average Diet Diversity

Decreased by **0.3** food group **per day**

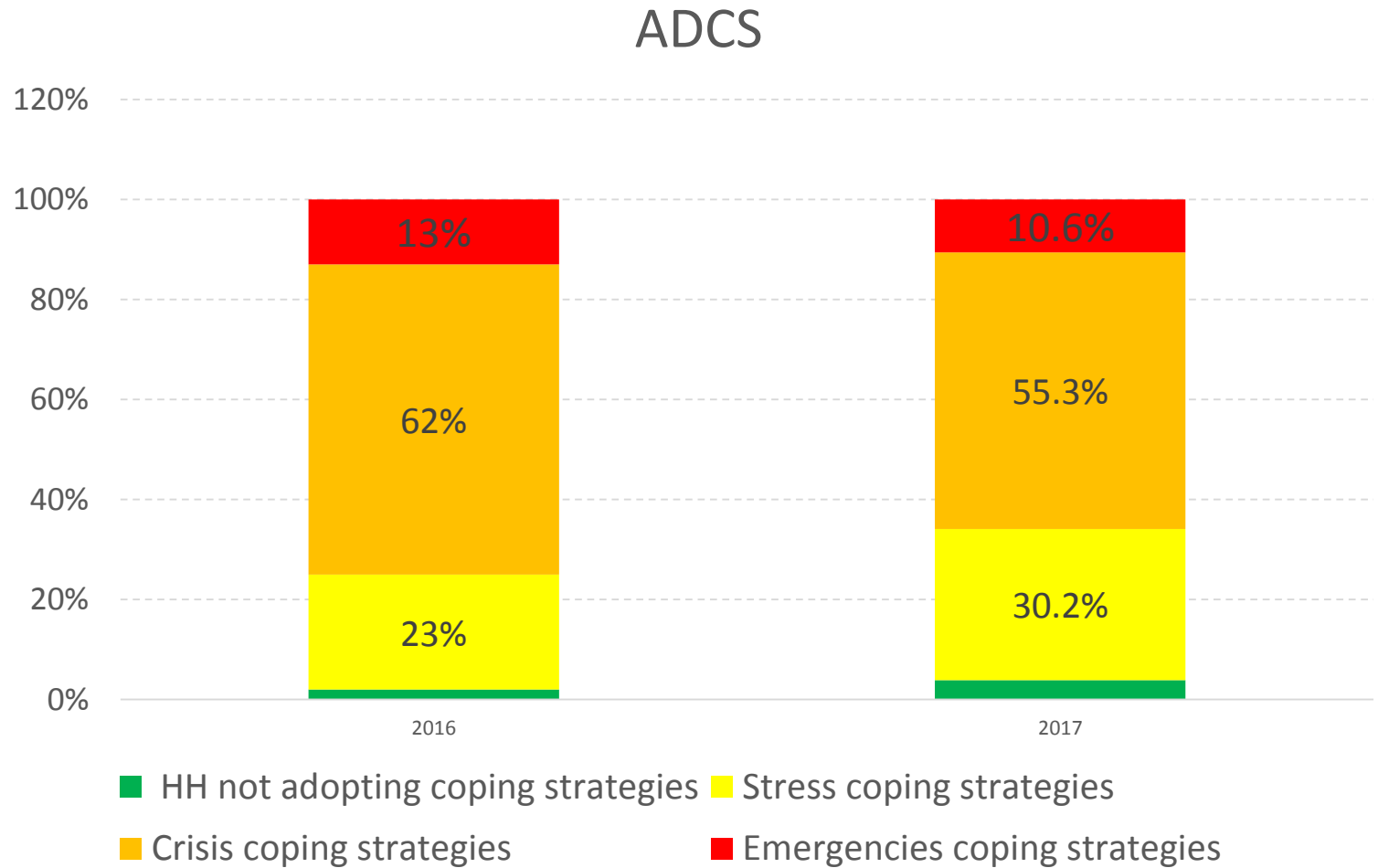


DETERMINANTS OF FOOD INSECURITY

COPING STRATEGIES

Households are adopting less coping strategies in 2017

However more stress coping strategies are being used.



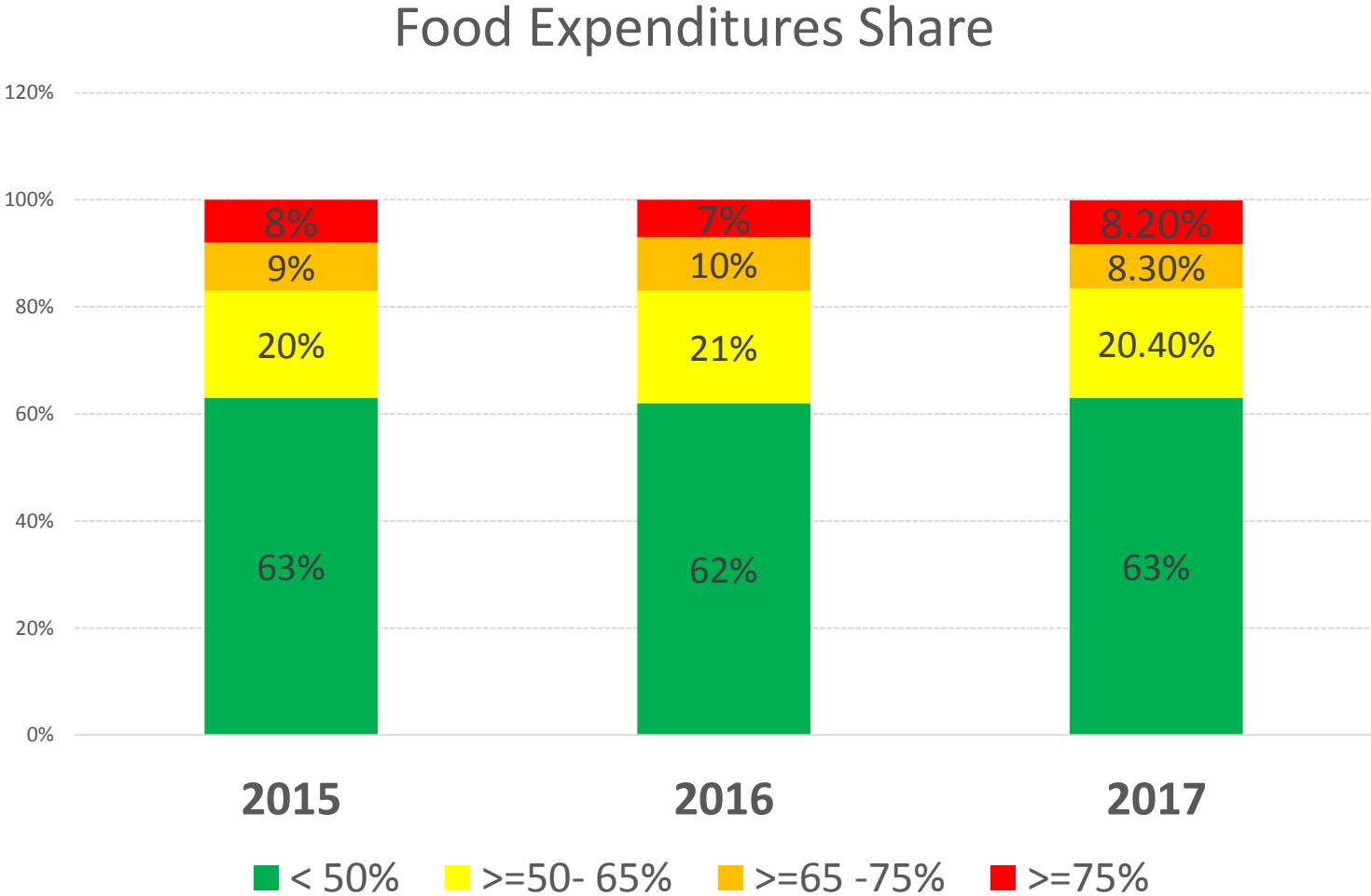
COPING STRATEGIES TRENDS 15-16-17



DETERMINANTS OF FOOD INSECURITY

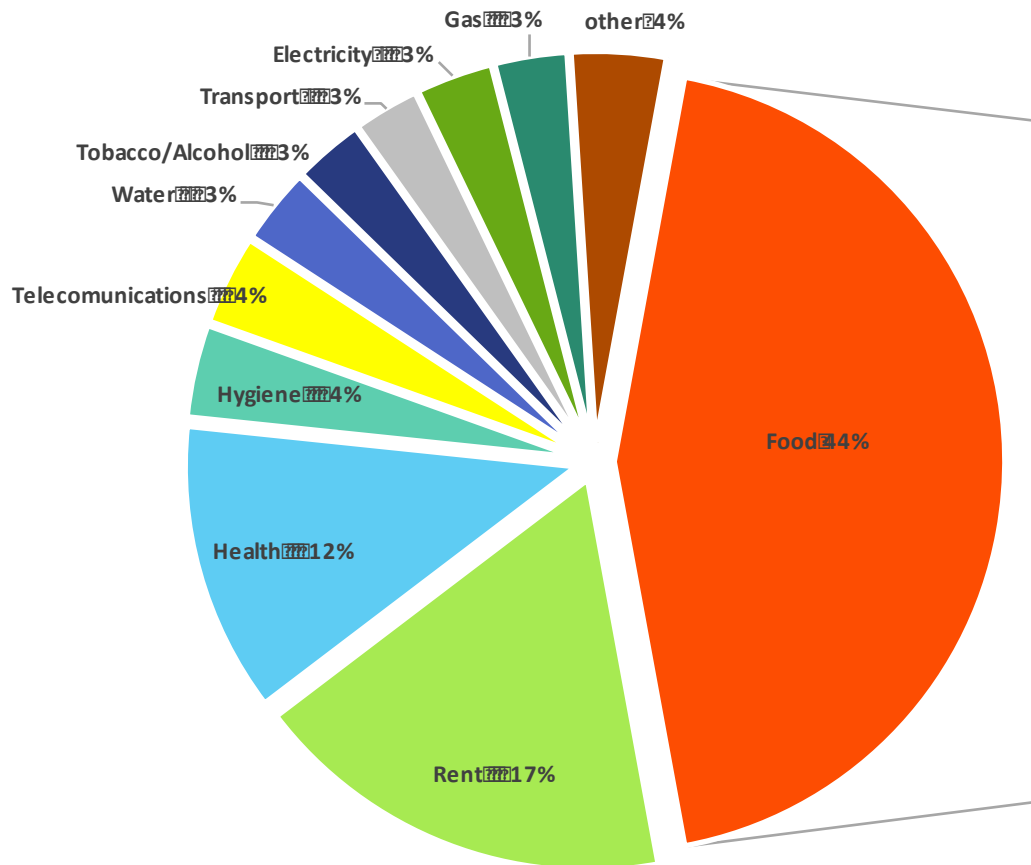
FOOD EXPENDITURES SHARE TRENDS 15-16-17

Increase in the Households spending more than 75% in Food

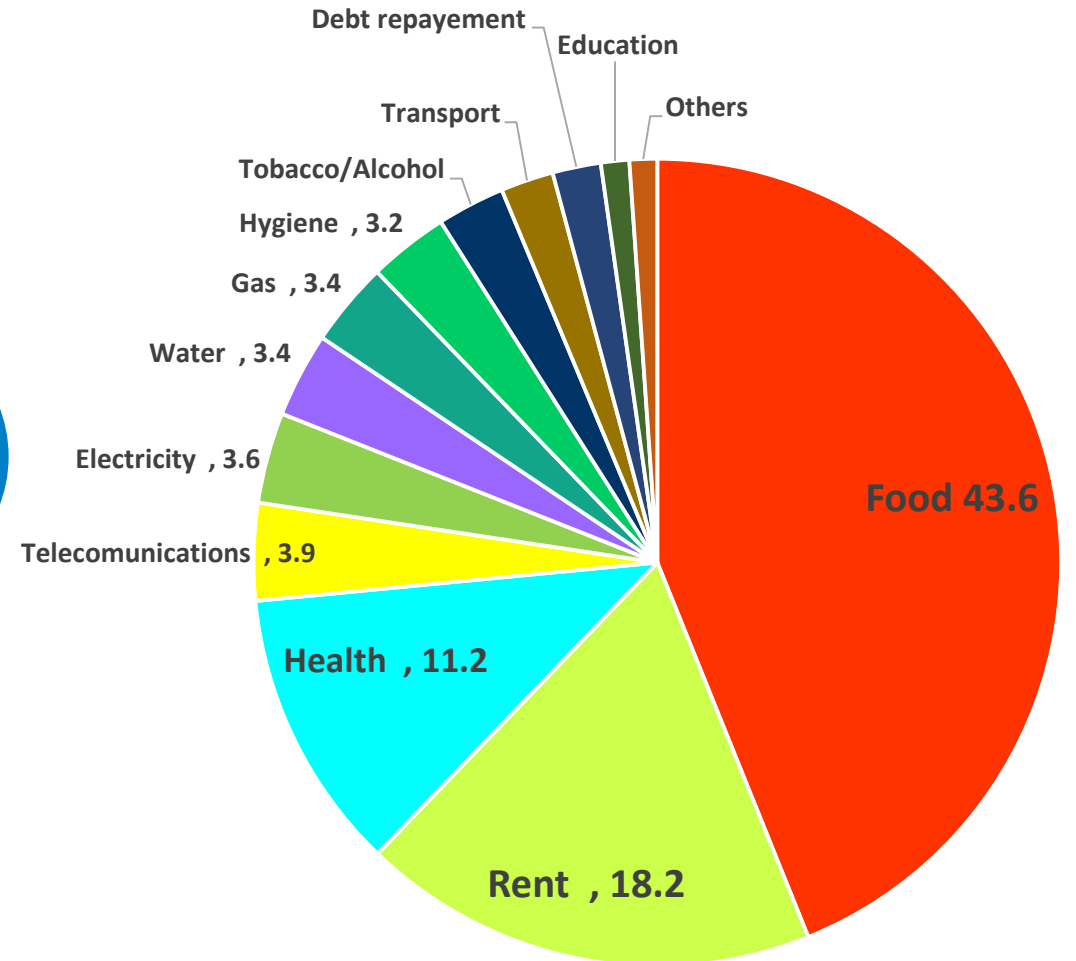


ECONOMIC VULNARABILITY

EXPENDITURE SHARE
2016



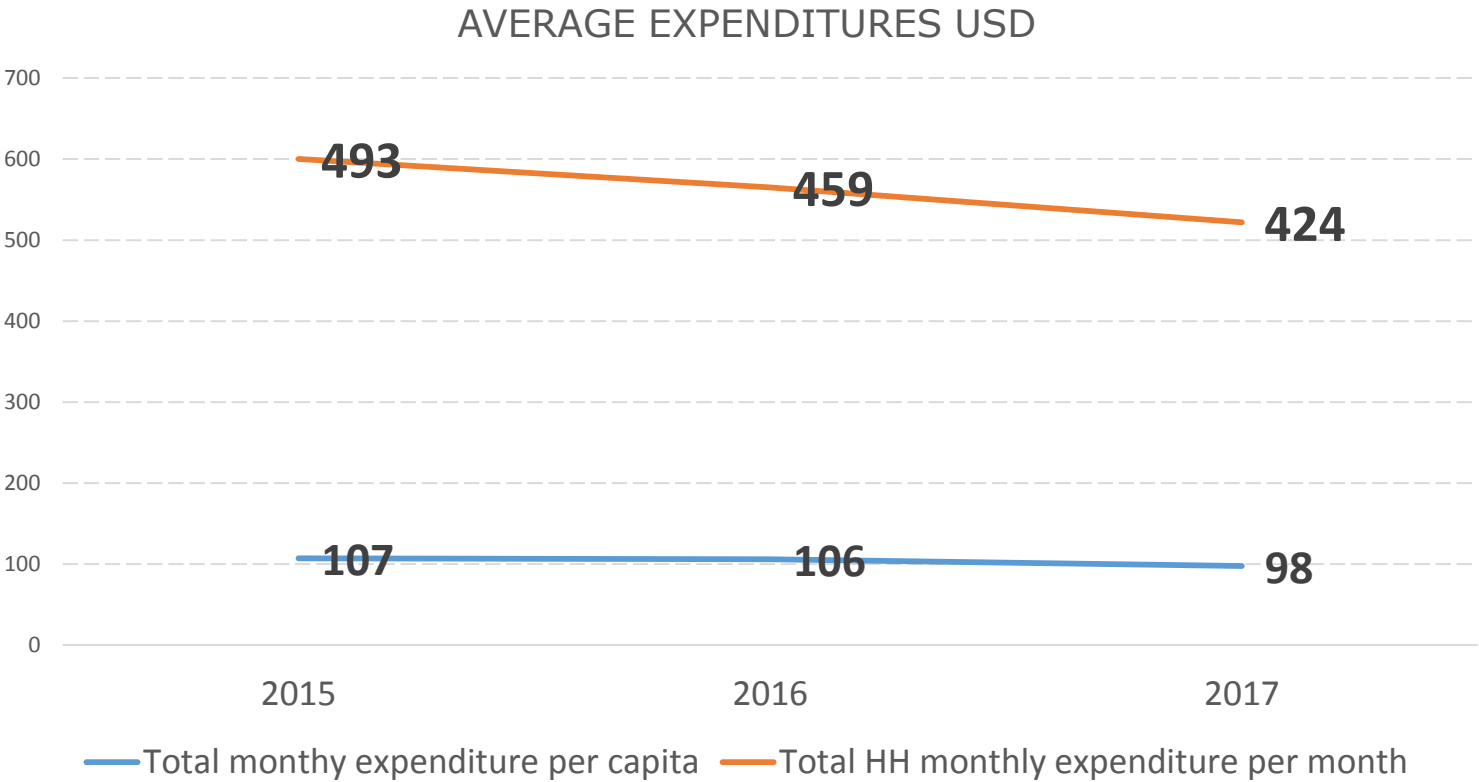
EXPENDITURE SHARE
2017



ECONOMIC VULNARABILITY

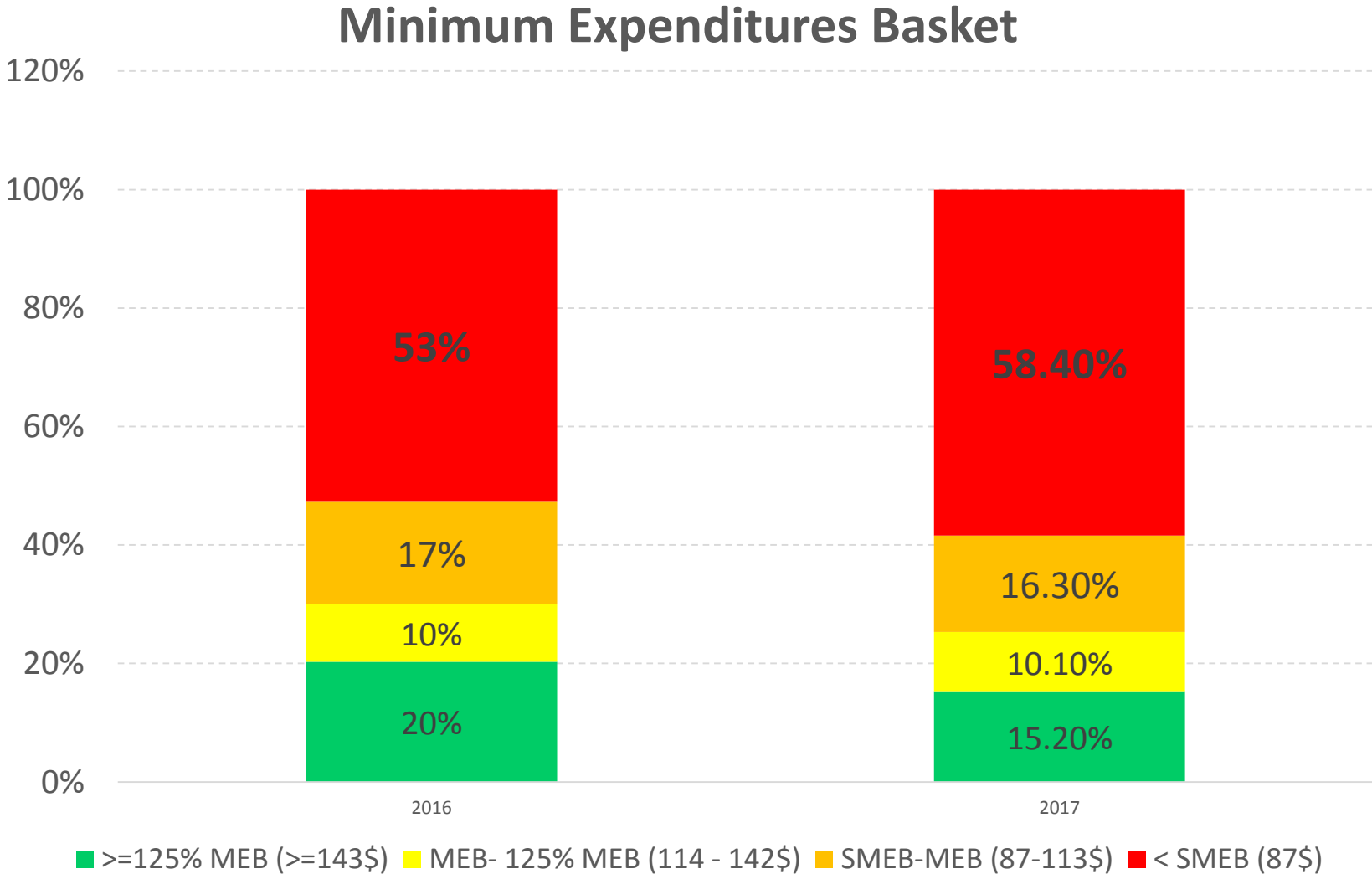
Households are spending less money on a monthly basis compared to 2016

Expenditures on individual level decreased by 8 USD compared to 2016 and 9 USD compared to 2015

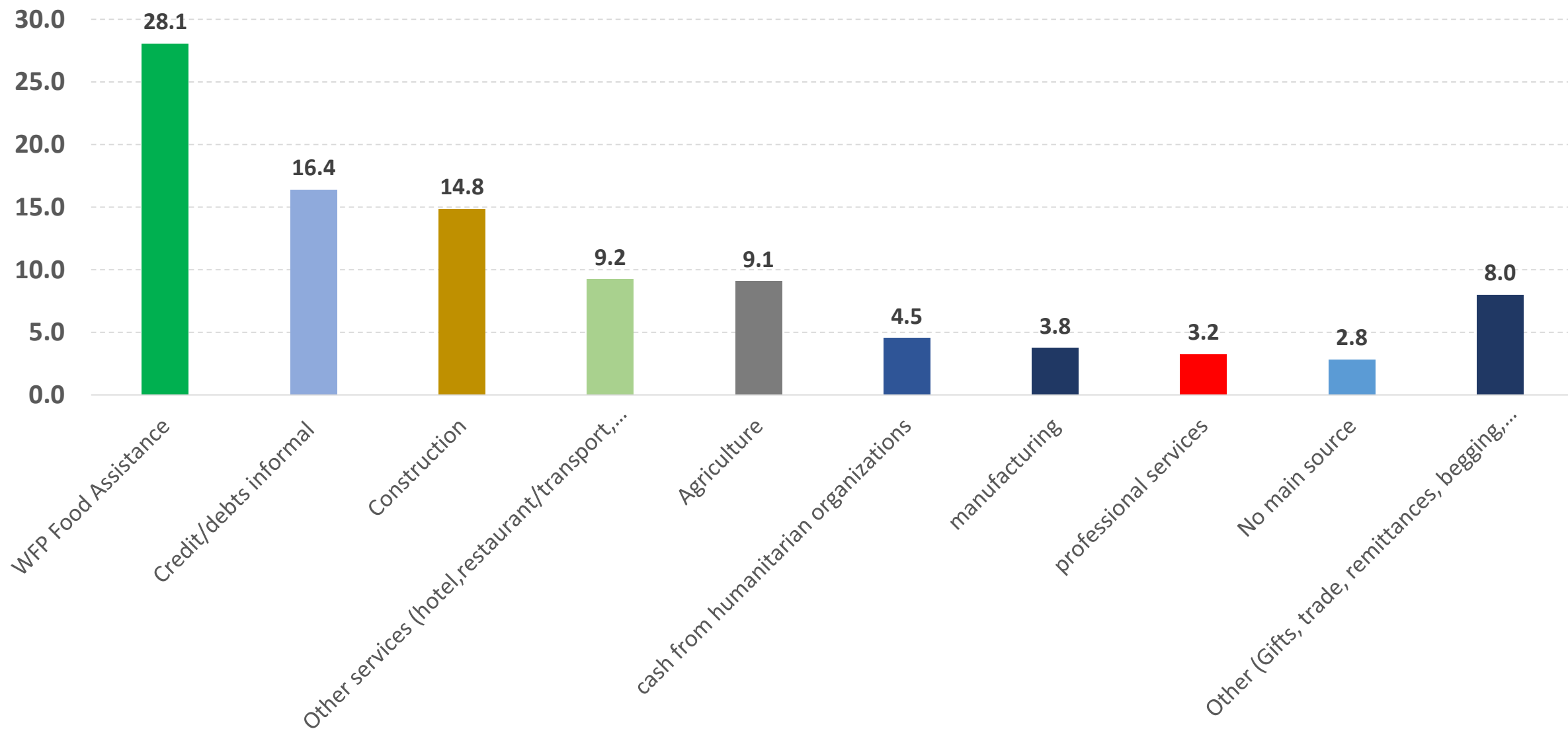


ECONOMIC VULNARABILITY

An increase of 5% of household living under the SMEB



FIRST SOURCE OF INCOME



Steps Forward

- Further analysis to be done
- Identifying where and who are the food insecure and why they are food insecure with correlation to different underlying causes of food insecurity including economic vulnerability



**Inter-Agency
Coordination**
Lebanon

TARGETING OPERATIONALIZATION OF THE DESK FORMULA 2017

INTERAGENCY MEETING AUG 2017

TARGETING FOR DIRECT ASSISTANCE: WELFARE MODELLING

- “ProGres model”, known as the Desk Formula;
- Predicts HH expenditure per capita based on various variables that are available in the UNHCR registration database;
- The formula scores and ranks HHs based on predefined cut-offs (S/MEB);
- Programmatically adapted for cash and food assistance targeting;
- Introduced in 2016 to replace the households visits model, and recalibrated in 2017 following one year of implementation.

OPTIONS FOR OPERATIONALIZATION

Page 34

Bottom up Approach

Filling-in-the-blanks

OPTION 1 – Multi-purpose cash assistance

Page 35

BOTTOM UP APPROACH

Use the rank for inclusion and discontinuation – Stream A

Geographical allocation/quota: % of Severely Vulnerability

Stream B- FastTrack

Stream C - Qualitative inclusion

FOOD ASSISTANCE

Page 36

BOTTOM UP APPROACH

Use the rank for inclusion and discontinuation

Target below MEB, with a focus on below SMEB

Qualitative inclusion – criteria under development
in collaboration with UNHCR

OPTION 2 - Multi-purpose cash assistance

Page 37

FILL IN THE BLANKS

Keep current assisted caseload

Geographical allocation/quota: inclusion only

Use FastTrack for inclusion

WAY FORWARD

- The bottom up approach was considered by the BA core group as the “most logical” from a technical / programmatic perspective;
- As a common practice, inclusion and discontinuation should be accompanied by messaging, communication, and advocacy efforts;
- Reactions from excluded beneficiaries should be closely monitored at field level, especially for partners running multi-sectoral programmes who have staff in areas with dense refugee concentration;
- Operational briefs will be taking place in different interagency meetings during August.