

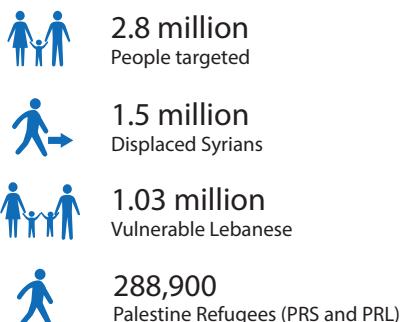
2017 June Statistical Dashboard



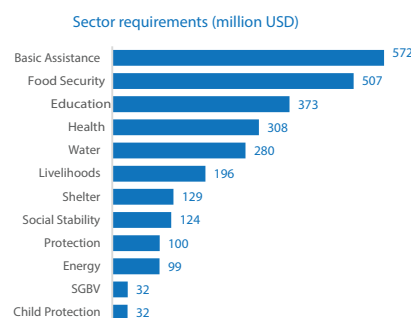
Inter-Agency
Coordination
Lebanon

The monthly dashboard summarizes the progress made by partners involved in the Lebanon Crisis Response Plan (LCRP) and highlights trends affecting people in need. Partners in Lebanon are working to: 1) ensure protection of vulnerable populations; 2) provide immediate assistance to vulnerable populations; 3) support service provision through national systems; and 4) reinforce Lebanon's economic, social, institutional and environmental stability.

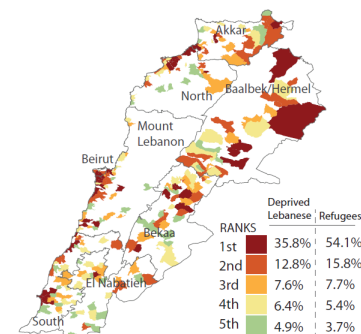
2017 Planning Figures



2017 Funding Requirements USD 2.75 billion



251 Most Vulnerable Cadasters



Basic Assistance

This month: Reporting partners: 17 Population reached: 285,175

reached / target

of households receiving regular multi-purpose cash transfers (this month)* 57,035 / 240,276

Total USD amount distributed in multi-purpose cash (Leb, Syr & Pal) \$66.3m / \$316 m

of households receiving seasonal cash grants or vouchers 183,265 / 302,756

Total USD amount distributed as seasonal multi-purpose cash (Leb, Syr & Pal) \$47.0m / \$156 m

Total USD amount injected into economy in forms of cash assistance (seasonal + regular) \$113.3m / \$472 m

0% 100% * Vulnerable Lebanese, Syrian refugees and Palestine refugees. Population reached includes HHs targeted by UNICEF.

Regular multi-purpose cash	Households reached	USD distributed
Lebanese	1,064	\$799 k
Syrians	49,460	\$50.5 m
Palestinians	9,657	\$5.7 m

Minimum Expenditure Basket (MEB) ¹	\$114/capita/month
Survival Minimum Expenditure Basket (SMEB) ¹	\$87/capita/month
Syrian refugee households living on less than MEB ²	71%
Syrian refugee households living on less than SMEB ²	53%



Education

This month: Reporting partners: 28 Population reached: NA

reached / target

of children and youth 3 years and above whose registration fees for ALP endorsed by MEHE are partially or fully subsidized for 2017 7,602** / 20,000

of non-Lebanese children enrolled in formal basic public schools (school year 2016/17) 202,259** / 423,832

of teachers and education personnel trained in schools 365** / 20,323

0% 100% **Figures are accurate as of end-March 2017.

% of school-aged refugees out of formal education ³	59%
Non-Lebanese students in basic education enrolled in the first shift ³	1 in 3
% of non-Lebanese among all students enrolled in first shift basic education ³	32%
% of non-Lebanese among all students enrolled in public schools in basic education ³	50%



Water

This month: Reporting partners: 24 Population reached: 12,546

reached / target

of affected people assisted with temporary access to adequate quantity of safe water for drinking and water for domestic use (monthly target)*** 185,011 / 194,462

of affected people assisted with sustained access to adequate quantity of safe water for drinking and for domestic use 839,151 / 1,765,000

of affected people with access to improved safe sanitation in temporary locations (monthly target)*** 164,742 / 194,462

individuals who have experienced a WASH behaviour change session/activity 95,962 / 325,000

0% 100% ***Number of Individuals decreased as compared to last month due to rectification of data by partners and removed duplication.

% Syrians refugee households that have access to cleaning items ²	90%
% Syrians refugee households that have access to personal hygiene items ²	87%
% Syrian refugee households that have access to female hygiene items ²	86%
% Syrian refugee households that have access to baby care items ²	78%



Food Security

This month: Reporting partners: 15 Population reached: 772,324

reached / target

of vulnerable people reached with monthly food assistance (various modalities) 767,668 / 939,709

Total USD transferred as cash for food \$121.2m / \$ 344.9 million

of farmers with enhanced farming production 1,683 / 21,693

of people supported for employment in the agriculture sector 1,493 / 10,000

of people supported for improved nutritional practices 8,500 / 35,000

0% 100%

% Syrian refugee households with some level of food insecurity ²	93%
% Syrian refugee households are moderately to severely food insecure ²	36%
% Syrian refugee households depending on food voucher/e-card for income source ²	33%
% Lebanese households vulnerable to food insecurity ⁴	10%
% Lebanese farmers in need of agriculture support ⁴	73%
% PRS population who is food insecure ⁵	94.5%



Health

This month: Reporting partners: 25 Population reached: 96,929

reached / target

# of subsidized primary health care consultations provided	919,613 / 2,214,000
# of persons assisted with their hospital bills	44,149 / 130,000
# of staff receiving salary support at MoPH central and peripheral levels	182 / 244



Livelihoods

This month: Reporting partners: 27 Population reached: 3,324

reached / target

# micro, small and medium enterprises (MSME) & cooperatives supported through increased access to financial services, in-kind & cash grants	495 / 1,215
# of targeted vulnerable people working on public infrastructure / environmental assets upgrading	1,892 / 37,650
# people trained and/or provided with marketable skills and services	10,552 / 28,000



Protection

This month: Reporting partners: 48 Population reached: 589,252

reached / target

# of individuals benefitting from legal counseling, assistance and representation regarding legal stay	15,281 / 40,000
# of individuals benefitting from counseling, legal assistance and legal representation regarding civil registration including birth registration, marriage	42,346 / 70,000
# of individuals benefitting from community-based interventions	20,313 / 61,500
# of individuals trained, supported, and monitored to engage in community-based mechanisms	13,078 / 4,750
# of individuals with specific needs receiving specific support (non-cash)	4,719 / 16,800
# of women, girls, men and boys at risk and survivors accessing SGBV prevention and response services in safe spaces	53,954 / 140,000
# of women, girls, men and boys sensitized on SGBV	151,782 / 250,000
# boys and girls accessing community-based psychosocial support and/or assisted through child protection case management services	19,156 / 53,800
# of caregivers accessing child protection prevention (caregivers' programmes)	27,583 / 105,500
# of boys and girls accessing community-based psychosocial support	85,432 / 177,000
# of boys, girls and caregivers reached on key child protection issues	264,462 / 613,000



Shelter

This month: Reporting partners: 12 Population reached: 8,916

reached / target

# of people benefitting from weatherproofing and/or maintenance of makeshift shelters within informal settlements, residential and non-residential buildings	32,176 / 210,500
# of people benefitting from rehabilitation, upgrade or repair of substandard buildings into adequate shelters	29,656 / 258,000
# of people benefitting from upgrade of common areas within substandard residential buildings	0 / 30,000
# of individuals received fire-fighting kits and awareness sessions in informal settlements and substandard buildings	19,659 / 104,000



Social Stability

This month: Reporting partners: 25 Population reached: 5,349

reached / target

# community and municipal support projects implemented to alleviate resource pressure and reduce tensions	55 / 119
# new dispute resolution and conflict prevention mechanisms established	25 / 61
# youth and children engaged in social stability initiatives	26,273 / 14,300

# of in-hospital deliveries ¹⁴ (54% Lebanese & 46% non-Lebanese)	27,721
Caesarian delivery rate (Lebanese) ¹⁴	56%
Caesarian delivery rate (non-Lebanese) ¹⁴	34%
# of maternal deaths (non-Lebanese) ¹⁴	4
# of neonatal deaths ¹⁴ (45% Lebanese & 55% non-Lebanese) ¹⁴	155

% of Lebanese households registered with NPTP have access to full-time employment ⁶	13%
% of Syrian refugees live below the poverty line ²	71%
Estimated number of Syrians employed ⁷	153,600
% of Lebanese SMEs are concentrated in Beirut and Mount Lebanon area ⁸	78%

Total registered Syrian refugees ⁹	1,001,051
% of Syrian refugees who are women and children ⁹	80.5%
% of Syrian refugee households reporting that all members have legal residency permits ²	21%
% of households reported having at least one member with specific needs ²	63%
# of individuals participating in activities in community centres and SDCs (2017) ¹⁰	33
# of institutional actors trained who demonstrate increased knowledge of SGBV (2017) ¹⁰	252
# of partners and government staff provided with general training on child protection and children's rights (2017) ¹⁰	387

# of assessments and profiles of (mainly poor urban) neighbourhoods (target:15)	0
% of Syrian refugees living in informal settlements ²	17%
% of Syrian refugees living non-residential buildings (ex: worksites, garages, shops) ²	14%
% of Syrian refugees living in substandard shelter conditions ²	38%
Average cost for rent per household for Syrian refugees ²	USD 189
Shelters that have been rehabilitated up to minimal standard in 2016 ⁷	11,281

# of vulnerable cadastres where population has increased by 50% or more ⁷	114
% of Lebanese who feel safe ¹¹	55%
% of Syrians who feel safe ¹¹	73%
% increase in municipal garbage collection expenditures ¹²	40%
% of host and displaced communities members reporting multiple causes of tensions between communities ¹³	55%

¹ Inter-Agency Information Sharing Portal, Basic Assistance, SMEB, MEB: <http://data.unhcr.org/syrianrefugees/download.php?id=6327>

² 2016 Vulnerability Assessment for Syrian Refugees (VASyR), <http://data.unhcr.org/syrianrefugees/download.php?id=12482>

³ MEHE - 2017

⁴ Food Security and Livelihoods Assessment of Lebanese Host Communities FSLA 2015

⁵ AUB UNRWA 2015

⁶ MoSA NPTP Database

⁷ ILO Quantitative Framework for Access to Work for Syrian Refugees in Lebanon, 2016

⁸ MOET SME strategy

⁹ UNHCR data as of 30 June 2017

¹⁰ Activity Info Partner Reports - 2017

¹¹ USJ / UNHCR Perception Survey 2016

¹² REACH/OCHA/UNICEF: Defining Community Vulnerabilities in Lebanon <http://data.unhcr.org/syrianrefugees/download.php?id=9545>

¹³ Inter-Agency 251 most vulnerable cadastres, <http://data.unhcr.org/syrianrefugees/download.php?id=8698>

¹⁴ MoPH Q1-2017 Dashboard

MAPPING OF INFORMAL SETTLEMENTS

Spontaneous informal settlements are scattered throughout Lebanon. Identifying them, assessing needs and coordinating the response can therefore be challenging. The Inter-Agency Mapping Project (IAMP), managed by Medair, maps all informal settlements. Data is updated and released on a monthly basis, and full country-wide sweeps are conducted every two months. Enumerators collect information on the number of tents and individuals, and record the main source of water and electricity. IAMP data is used extensively by field offices and sectors for planning, targeting and monitoring, including during large-scale evictions. IAMP data is publicly available through the Inter-Agency Information Management Unit [Dropbox](#).



246,126

People in informal settlements¹



218,587 in June 2016



43,727

Tents



38,970 in June 2016



2,398

Settlements²



2,126 in June 2016

¹ Excludes people living in sub-standard buildings (farms, garages, etc.) within informal settlements

² Excludes sites with less than four tents

CROWDING



51.9

Average number of people per site



52.3 in June 2016



5.8

Average number of people per tent



5.8 in June 2016



9.2

Average number of tents per site



9.3 in June 2016



9.7

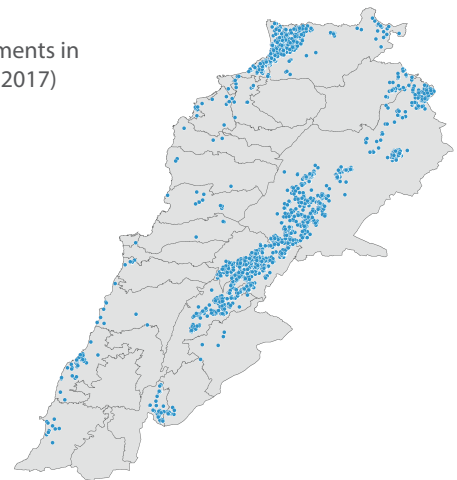
Average number of people per latrine



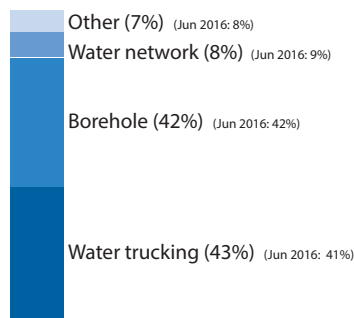
10.5 in June 2016

GEOGRAPHICAL DISTRIBUTION

Informal settlements in Lebanon (June 2017)

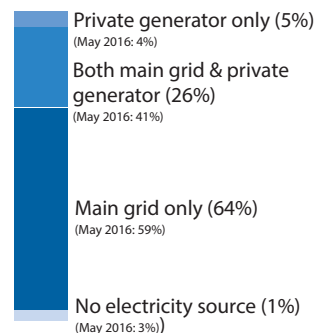


WATER SOURCE



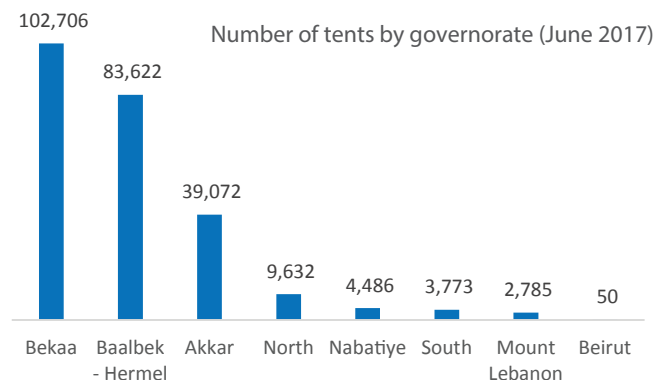
* In 1% of sites, no information was recorded regarding water source.

ELECTRICITY



* In 4% of sites, no information was recorded regarding electricity source.

**Data on electricity sources was not available for June 2016.



2017 APPEAL

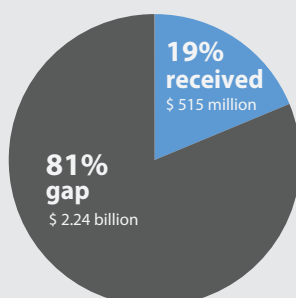
RECEIVED

\$515m*

Total funding reported received as of 30 June 2017

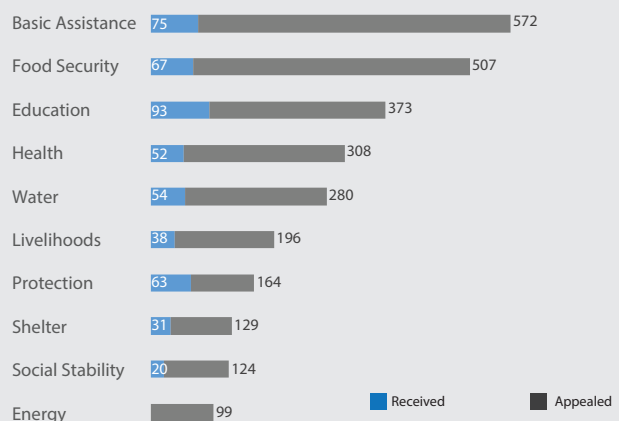
APPEAL

\$2.75b



* includes \$ 20 million reported as received but not yet allocated to a sector

2017 QUARTER 2: FUNDING RECEIVED AND ALLOCATED (million USD)



45 Organizations reported funding received in 2017: ACF, ACTED, ADRA, Amel, Ana Aqra, ANERA, Concern, Dorcas, DRC, FAO, GVC, Himaya Daee Aataa (HDA), Humedica, HWA, ILO, IMC, IOCC, IOM, IRC, KAFA, LSESD, Medecins du Monde, MSD, MTI, NRC, Oxfam, PCPM, RESTART, Save the Children, SFCG, SHEILD, SIF, TdH - Italia, UNDP, UNESCO, UNFPA, UN-Habitat, UNHCR, UNICEF, UNIDO, UNRWA, URDA, WFP, WHO, World Vision International