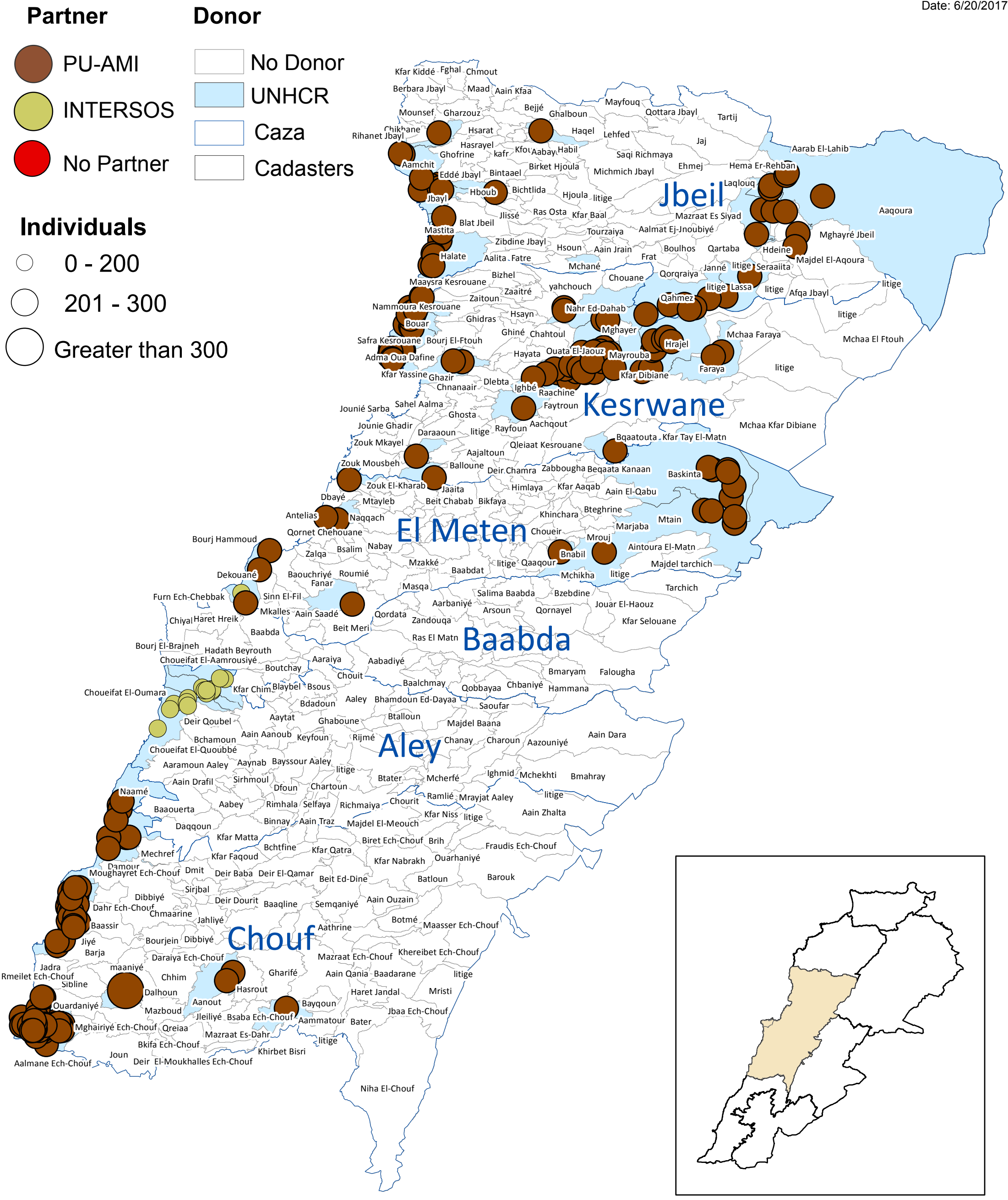


## BML: Informal Settlements (Active & <4 tents) Coverage

Date: 6/20/2017



Source: Feedback Provided by Partners on IAMP-38 as of 31st May 2017

This map has been produced by the LCRP Water Sector Information Management officer based on maps and material provided by the Government of Lebanon for operational purposes. It does not constitute an official United Nations map. The designations employed and the presentation of material on this map do not imply the expression of any opinion whatsoever on the part of the Secretariat of the United Nations concerning the legal status of any country, territory, city or area or of its authorities, or concerning the delimitation of its frontiers or boundary