



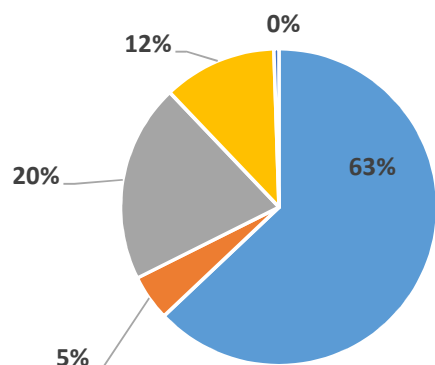
OUTCOME 5: Boys & girls at risk and survivors of violence, exploitation and abuse have access to an improved and equitable prevention & response

Output 5.2: Displaced and host community boys & girls at risk or survivors of violence have access to an integrated package of quality prevention and response services

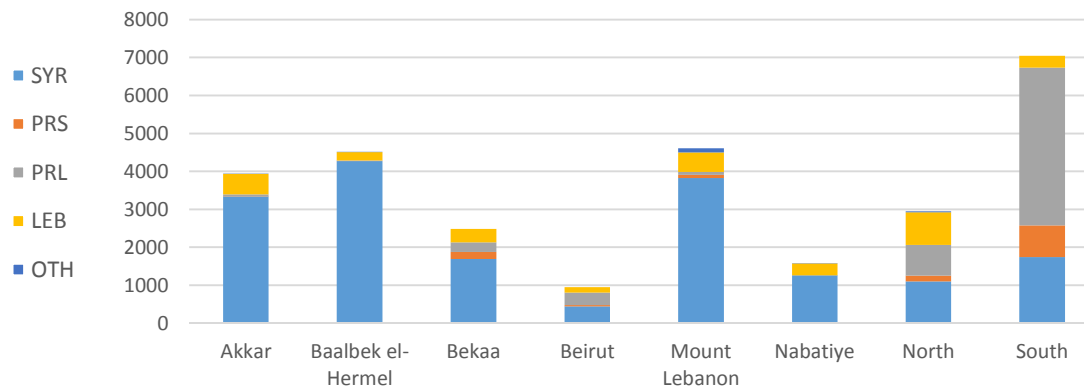
Funding agencies: UNICEF, UNHCR, OCHA, independent sources.

Information management: Vicken Ashkarian, vashkarian@unicef.org

Indicator 5.2.2: # of boys & girls accessing CP & focused PSS



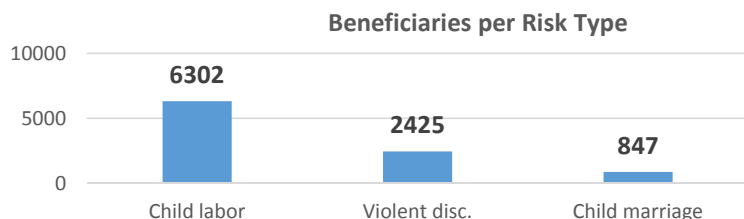
Disaggregations		
Cohorts	Sex	Risk type
28047	27923	9574



Aggregated per sex		Aggregated per age groups*		
Male	Female	0 - 5	6 - 11	12 - 17
50.4%	49.6%	0.2%	62.5%	37.3%

* Disaggregation by age excludes data from UNICEF Pal. Prog.

Governorates							
Akkar	B/H	Bekaa	Beirut	ML	Nab	Nt	St
3941	4508	2483	943	4608	1577	2945	7042

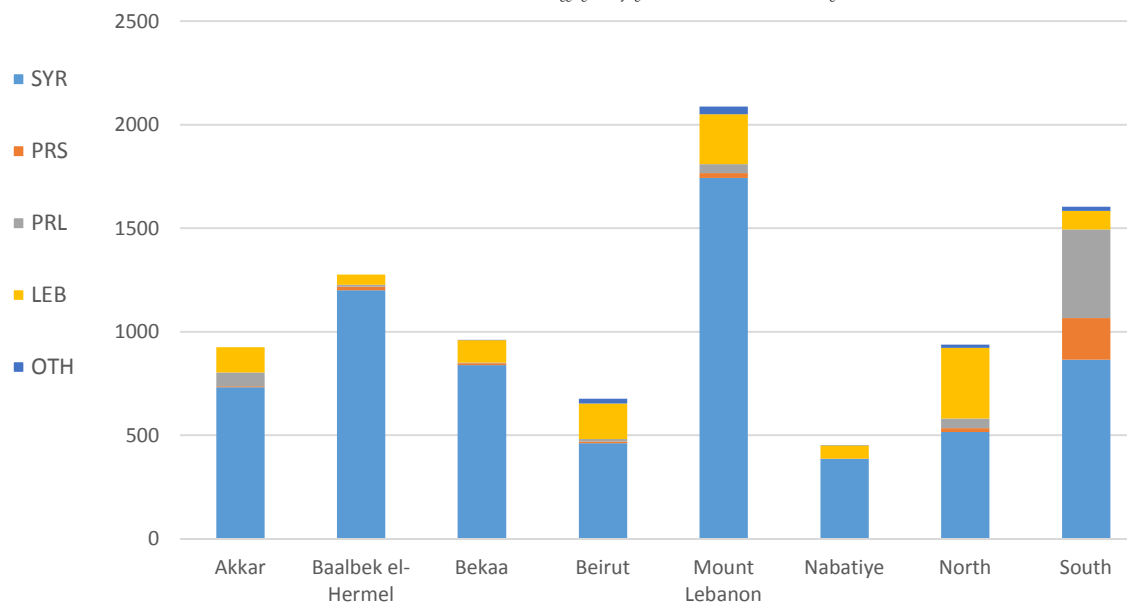
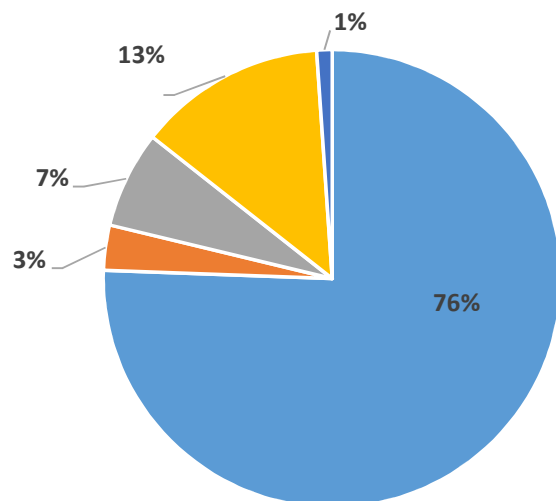


Partners:
DRC, DRC/LRC, HDA, Himaya, Intersos, IR, IRC, KAFA, Makhzoumi Foundation, MAP, Mercy Corps, Mouvement Social, SaJ, SCI, TdH - It, TdH - L, WCH, WVI, YNCA.

Indicator 5.2.3: # of boys & girls assisted through CP case management services

Disaggregations			
Cohorts	Sex	Age*	Risk type
8921	8887	7946	6431

* Disaggregation by age excludes data from UNICEF Pal. Prog.



Aggregated per sex		Aggregated per age groups*		
Male	Female	0 - 5	6 - 11	12 - 17
59.7%	40.3%	11.8%	39.5%	48.7%

* Disaggregation by age excludes data from UNICEF Pal. Prog.

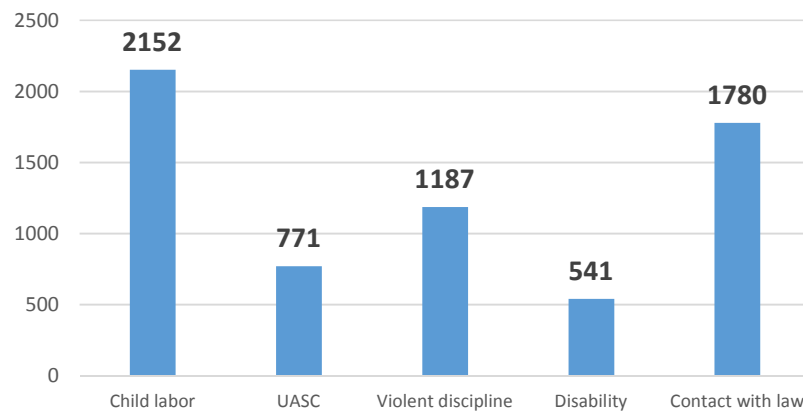
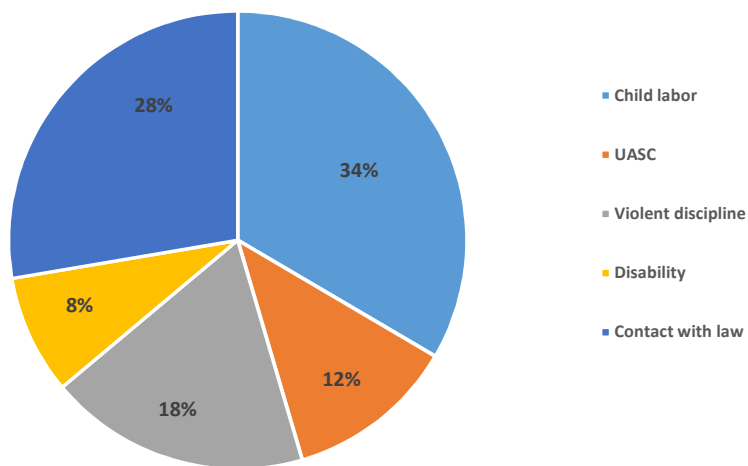
Governorates							
Akkar	B/H	Bekaa	Beirut	ML	Nab	Nt	St
925	1276	961	676	2088	453	938	1604

Partners:

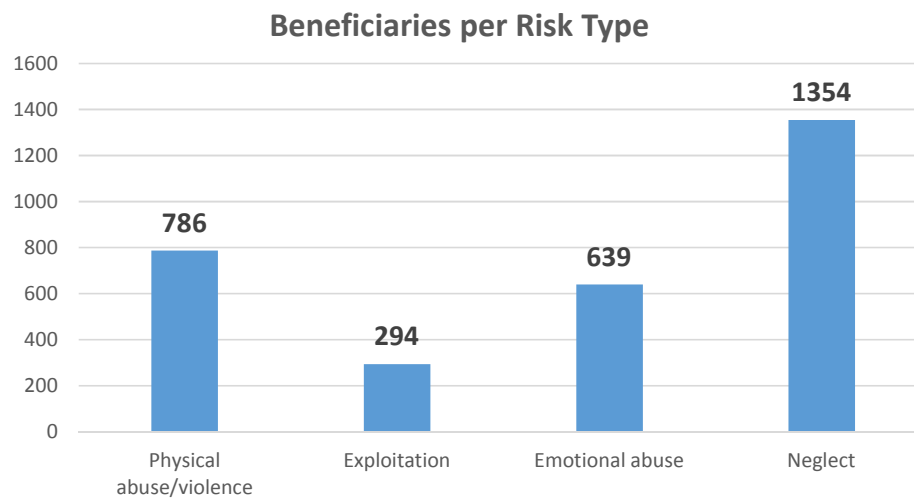
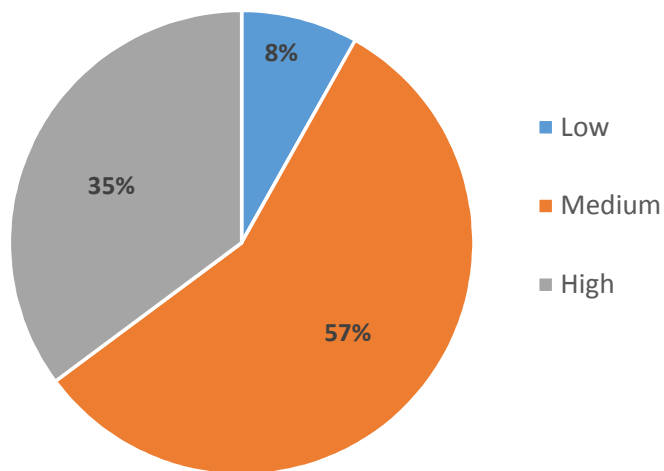
BZRD, DRC, Himaya, Intersos, IRC, KAFA, Makhzoumi Foundation, MAP, Mercy Corps, Mouvement Social, SCI, TdH - It, TdH - L, WCH, WVI, UNRWA.

Indicator 5.2.3: # of boys & girls assisted through CP case management services

Beneficiaries per Vulnerability

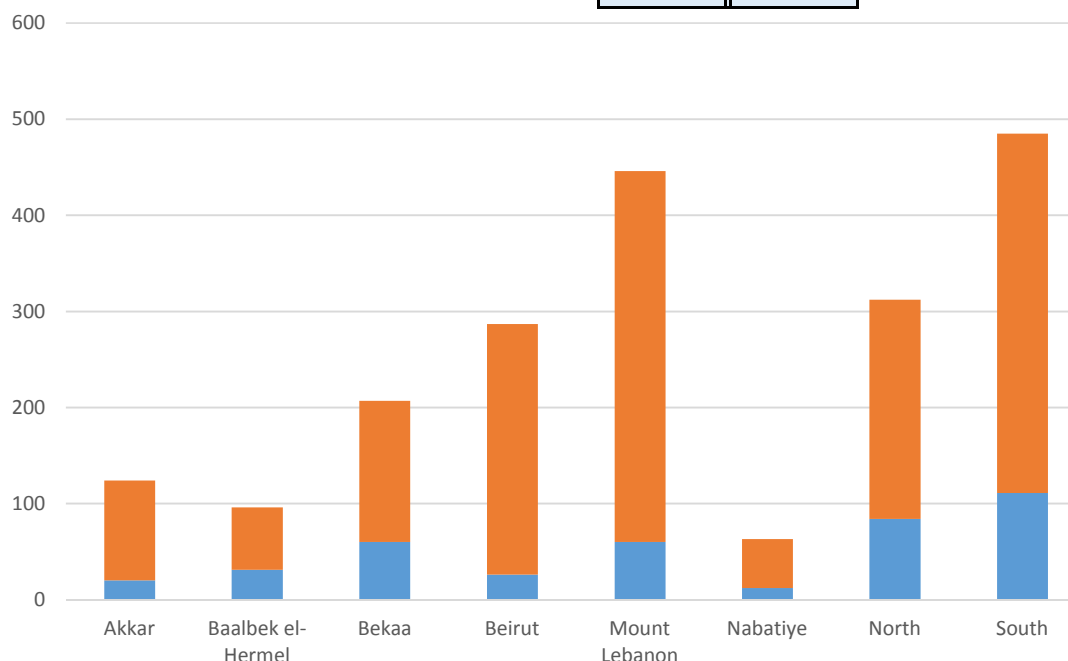
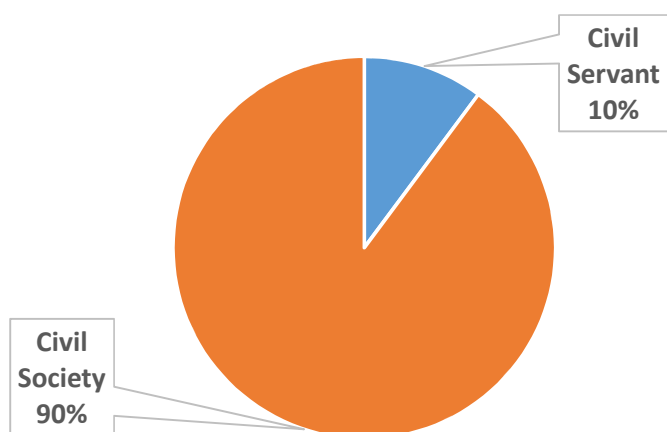
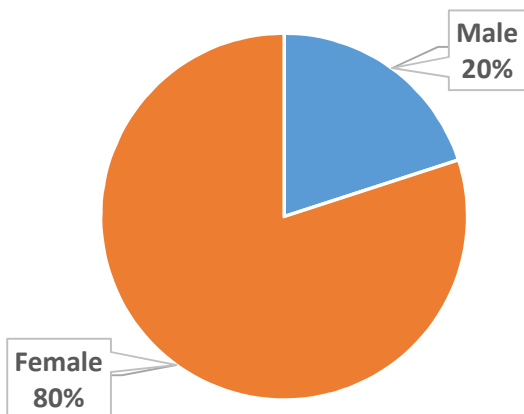


Beneficiaries per Risk Level



Indicator 5.2.4: # of partners and government staff provided with general training on CP and children's rights

Disaggregation	
Sex	Type
2020	1177

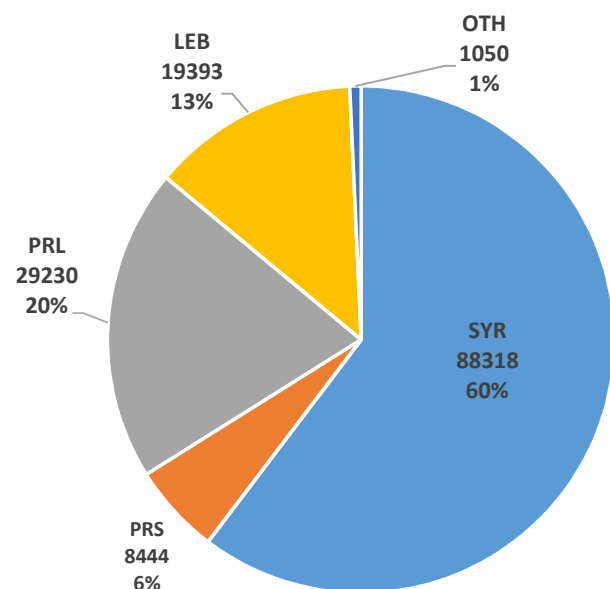


Governorates							
Akkar	B/H	Bekaa	Beirut	ML	Nab	Nt	St
124	96	207	287	446	63	312	485

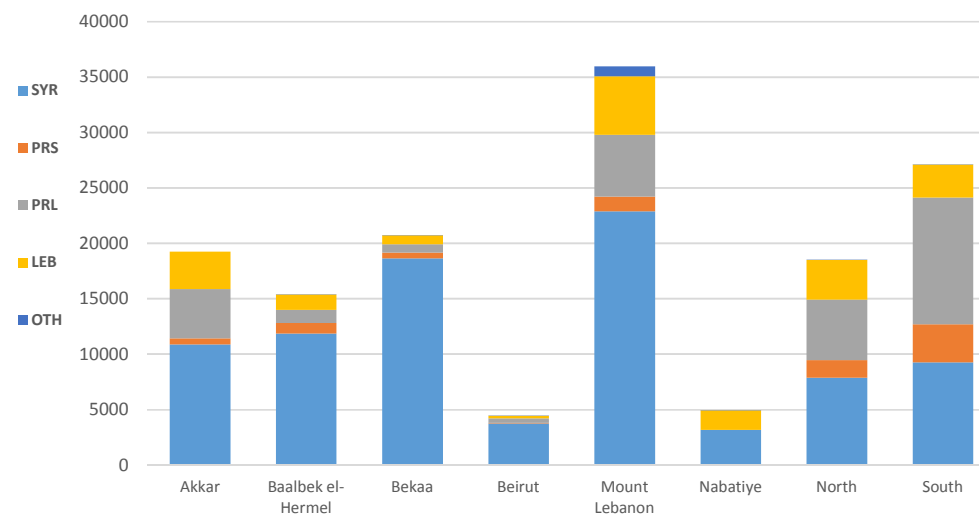
Partners:
 DRC, DRC/LRC, Intersos, IRC, KAFA, Makhzoumi Foundation, Mercy Corps, Mouvement Social, RtP, SCI, TdH - It, TdH - L, USJ, WCH, WVI.

Output 5.3: Vulnerable children, families and communities supported to promote practices that protect them.

Indicator 5.3.2: # of boys & girls accessing CP prevention (for boys & girls: community based PSS)



Disaggregations	
Cohorts	Sex
146435	145555



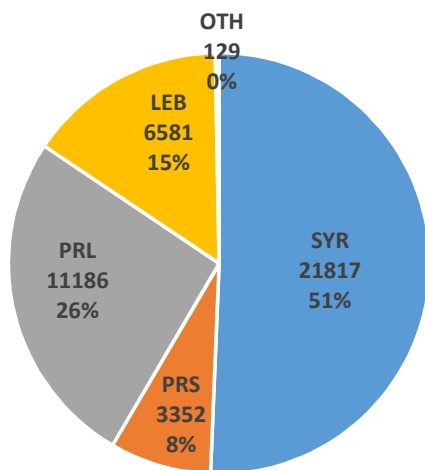
Aggregated per sex		Aggregated per age groups*		
Male	Female	0 - 5	6 - 11	12 - 17
48.8%	51.2%	6.8%	72.1%	21.2%

* Disaggregation by age excludes data from UNICEF Pal. Prog.

Governorates							
Akkar	B/H	Bekaa	Beirut	ML	Nab	Nt	St
19245	15408	20733	4452	35981	4936	18535	27145

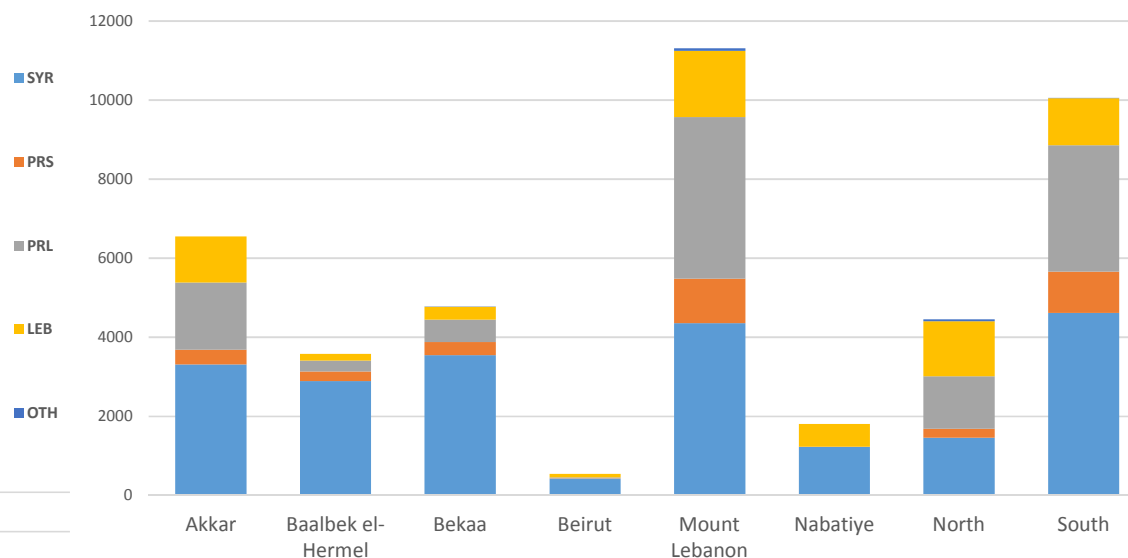
Partners: AMEL, ARCPA/AI-Jana, Beyond, BZRD, DRC, DRC/LRC, HDA, Himaya, Intersos, IR, IRC, KAFA, Makhzoumi Foundation, MAP, Mercy Corps, RtP, SaJ, SCI, SIF, TdH - It, TdH - L, WCH, WVI, YNCA .

Indicator 5.3.3: # of caregivers accessing CP prevention (caregivers' programs)

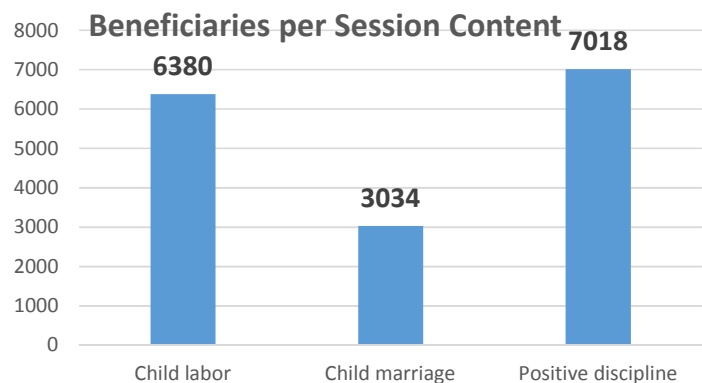


Activities per sex	
Male	Female
10.1%	89.9%

Disaggregations	
Cohorts	Sex
43065	42856

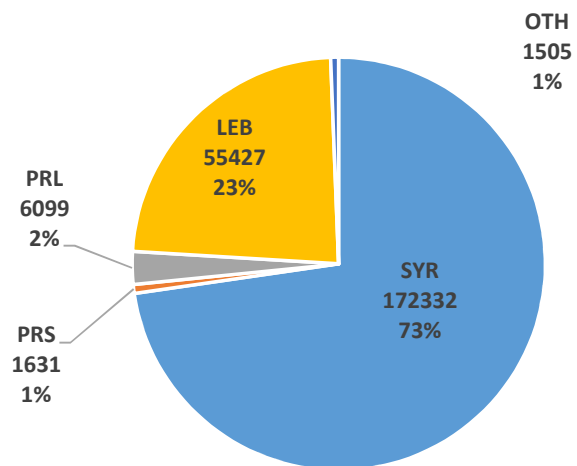


Governorates							
Akkar	B/H	Bekaa	Beirut	ML	Nab	Nt	St
6552	3577	4776	541	11310	1804	4449	10056



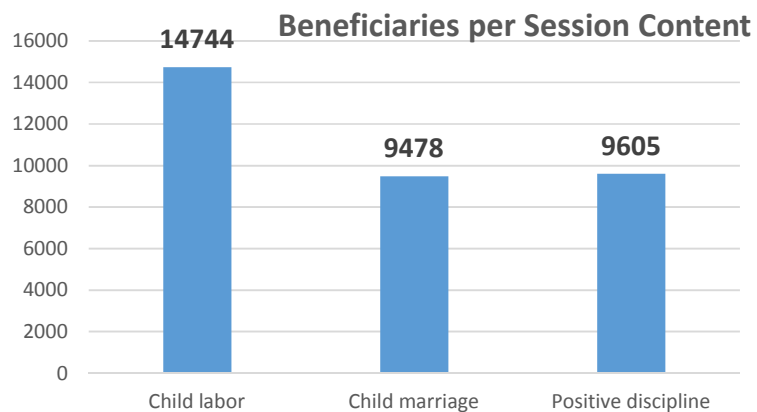
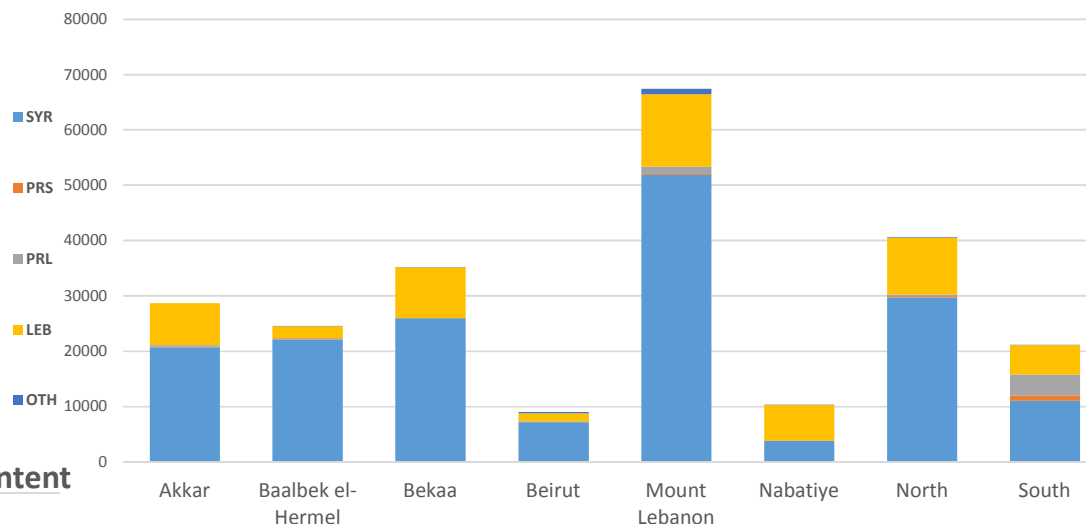
Partners: AMEL, ARCPA/AI-Jana, BZRD, Dorcas, DRC, DRC/LRC, HDA, Himaya, Intersos, IR, IRC, KAFA, MAP, Makhzoumi Foundation, Mercy Corps, Mouvement Social, SaJ, SCI, SIF, TdH - It, TdH - L, WCH, WVI, YNCA.

Indicator 5.3.4: # of girls & boys reached on key CP issues



Activities per sex	
Male	Female
50.6%	49.4%

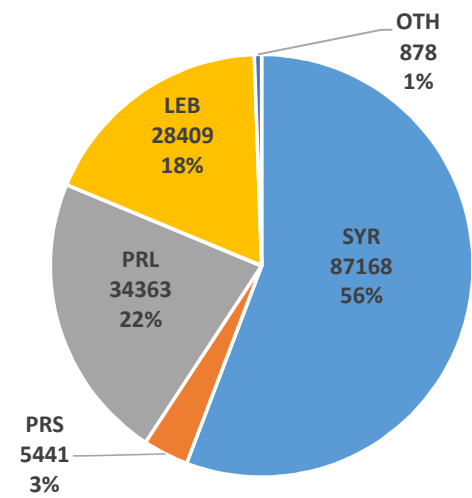
Disaggregations		
Cohorts	Sex	Age
236994	234551	208183



Governorates							
Akkar	B/H	Bekaa	Beirut	ML	Nab	Nt	St
28689	24545	35214	9045	67423	10276	40657	21145

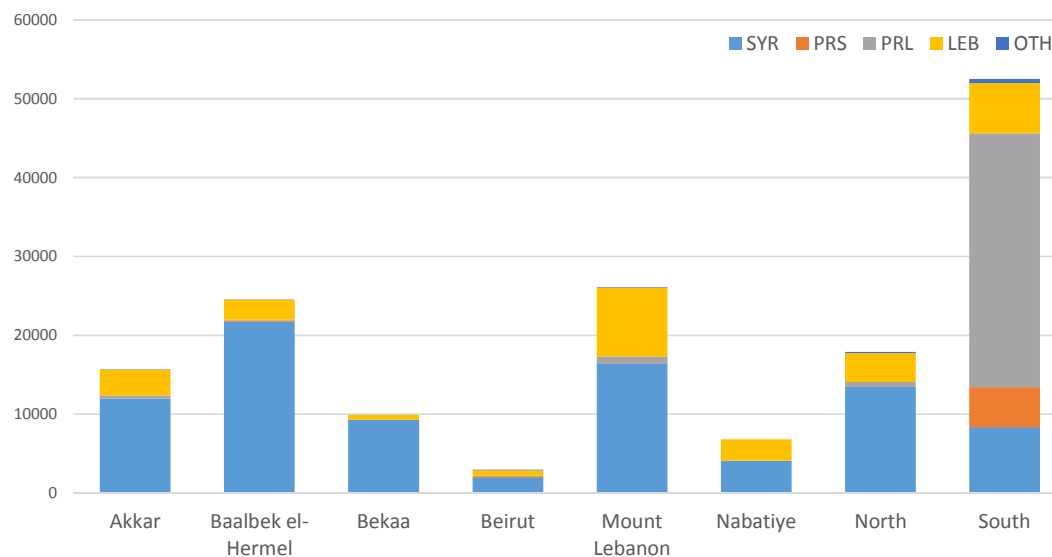
Partners: AMEL, Dorcas, DRC, DRC/LRC, Himaya, Intersos, IRC, KAFA, Makhzoumi Foundation, Mercy Corps, RtP, SaJ, SCI, SIF, TdH - It, TdH - L, WCH, WVI, YNCA.

Indicator 5.3.5: # of caregivers reached on key CP issues.

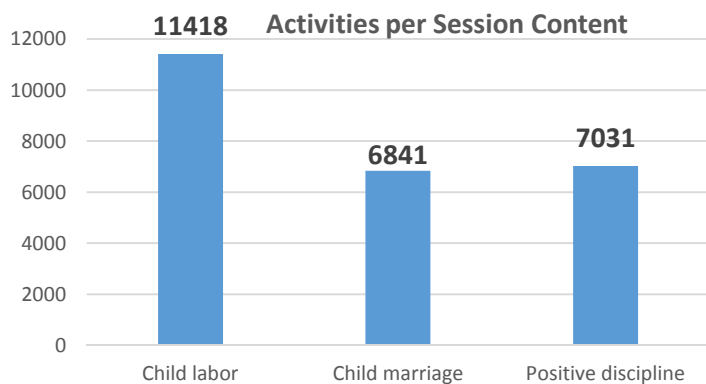


Disaggregations	
Cohorts	Sex
156259	155598

Activities per sex	
Male	Female
44.1%	55.9%



Governorates							
Akkar	B/H	Bekaa	Beirut	ML	Nab	Nt	St
15619	24499	9888	2945	26080	6819	17882	52527



Partners: AMEL, BZRD, DRC, DRC/LRC, Himaya, Intersos, IRC, KAFA, Makhzoumi Foundation, Mercy Corps, Mouvement Social, RtP, SaJ, SCI, SIF, TdH - It, TdH - L, WCH, WVI, YNCA.



OUTCOME 5: Boys & girls at risk and survivors of violence, exploitation and abuse have access to an improved and equitable prevention & response

Child Protection - All activities
Progress to target

