

## Camp Opened: 04 October 2015

### CAMP OVERVIEW

Coordinates :	Lat 3°25'17.399"S Lon 30°53'24.212"E
Camp Extent :	3,340 Hectares
Av. Camp Area/Person	305 m <sup>2</sup>
Distance from border :	37 km
Region/District :	Kigoma / Kibondo
# of Partners :	24
Admin divisions :	21 Zones, 738 Villages
Authority :	Ministry of Home Affairs (MHA) - Government of United Rep. of Tanzania

### CURRENT SERVICES

The Following Services are available in the camp:  
1 Hospital, 6 Health Posts, 2 Community-Based Rehabilitation Centers, 6 Primary Schools (5 schools under planning), 1 Secondary School, 3 Youth Centers, 1 Women's Center, 3 Food Distribution Centers, 3 Police Posts, 1 Common Market, 2 Camp-based Markets, and 86 Solar Street Lights.

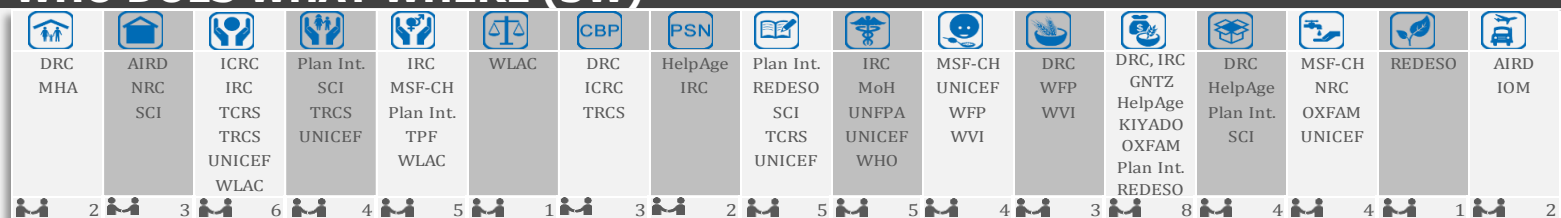
### COMMUNITY ORGANIZATION

The Camp Community Organization is structured around three administrative layers, which are Zones, Villages and Blocs. Each organizational level has its representatives with currently 4,491 bloc leaders, 738 Village leaders and 21 Zonal leaders.

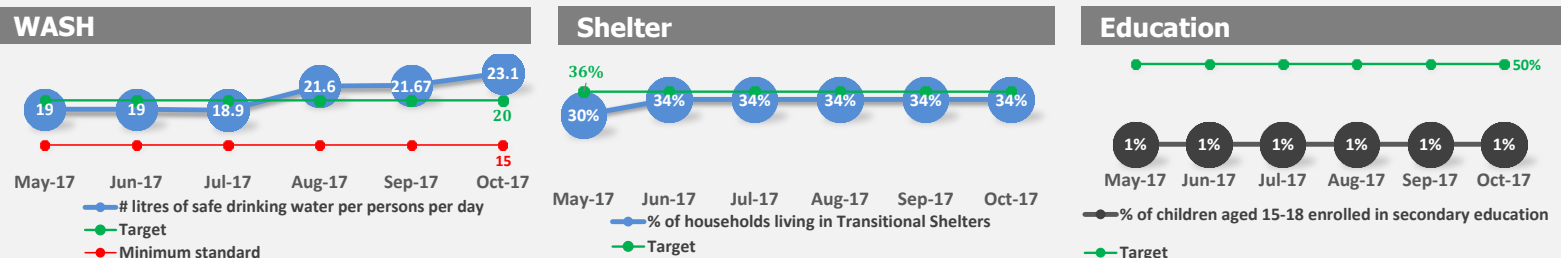
### SECTORS OVERVIEW

Sector	Indicator	Reporting Month : September 2017 for Livelihood and education	Minimum Standard	Target	Achieved	Actors
CCCM	% of families receiving CRIs		100%	60%	51%	MHA, UNHCR, DRC
	% of actors regularly participating in CCCM meetings		--	100%	60%	
Protection	% of PoCs registered and documentation issued according to UNHCR standards		100%	100%	99.5%	UNHCR, IRC
	# of individuals who received SGBV MSR support		--	800	565	
Shelter	% of households living in adequate dwellings (Transitional Shelters)		--	36%	34%	AIRD, NRC
	# of Km of road constructed and maintained		--	16	16	
WASH	# of persons per usable tap		200	100	134	TCRS
	% of households with family latrines		--	40%	33%	
Food	% of refugees receive timely monthly food assistance		100%	100%	96%	WVI, DRC, WFP
	% of required food quantity distributed (2,100 kcal)		100%	100%	83.0%	
Health	Crude Mortality Rate (CMR) - per 1,000 population/month		<1	0.7	0.1	TRCS
	Consultation per clinician per day		<50	50	49	
Education	% of children aged 6-14 yrs enrolled in primary education		100%	75%	62%	IRC
	% of children aged 15-18 enrolled in secondary education		100%	50%	1%	
Livelihood	# of start-up kits/cash provided		--	2,250	1,313	DRC, IRC, Plan Inter.
	# of refugees provided with financial services		--	1,380	1,091	

### WHO DOES WHAT WHERE (3W)



### CHALLENGING SERVICES MONITORING

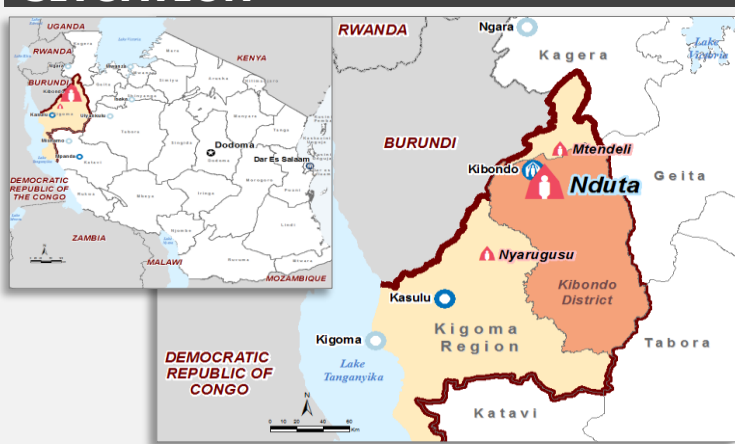


## Population : 120,043 Camp Phase : Care & Maintenance

### BACKGROUND

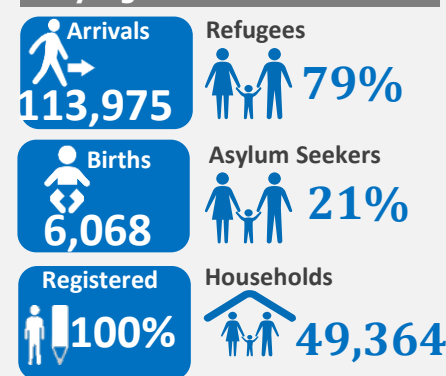
Nduta camp opened on 4 October 2015, as an emergency measure to relocated 40,000 Burundian Refugees from Nyarugusu camp (decongestion). New arriving Burundians were hosted in Mtendeli camp once Nduta reached its initial maximum capacity of 50,000 persons (January 2016). Since Mtendeli camp reached its capacity of 50,000 on 3rd October 2016, the government agreed to reopen Nduta camp again to host all newly arriving burundians. Following the revocation of the prima facie refugee status recognition on 20 January 2017 by the government, all new arrivals are undergoing a refugee status determination process. The Voluntary Repatriation of Burundians began in early September 2017.

### SITUATION



### DEMOGRAPHY

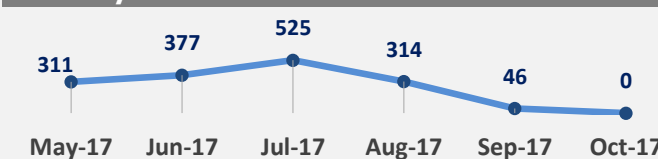
#### Key Figures



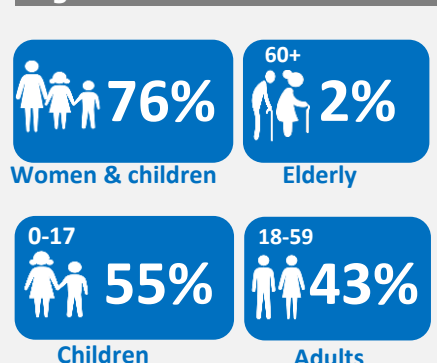
#### Biometrically Registered Population Growth



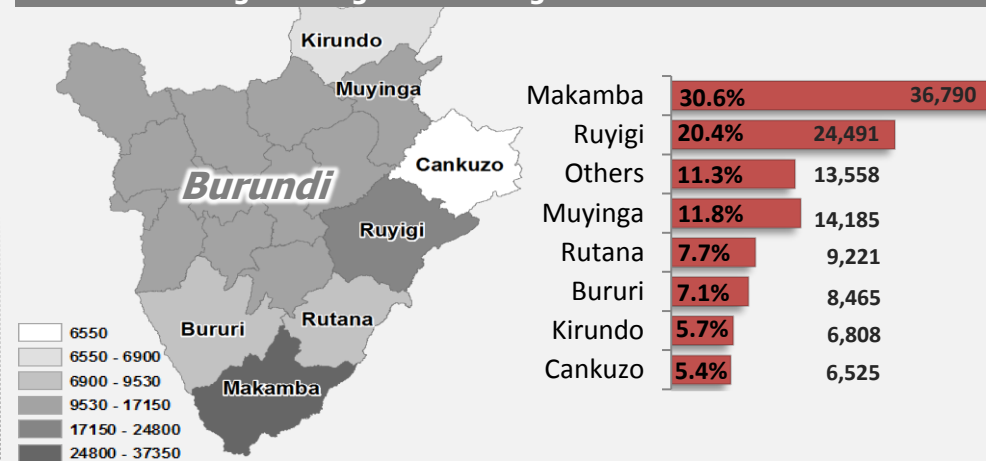
#### Monthly arrival trend



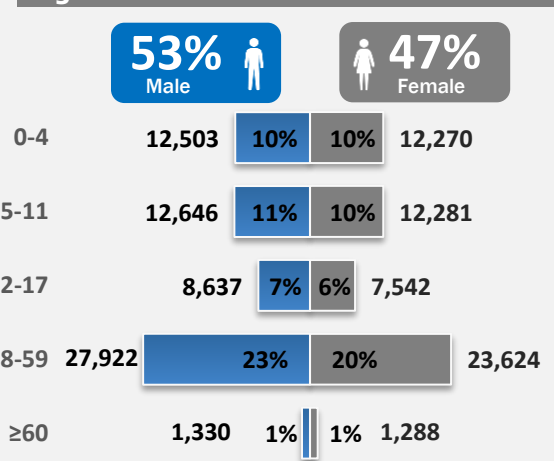
#### Age and Gender



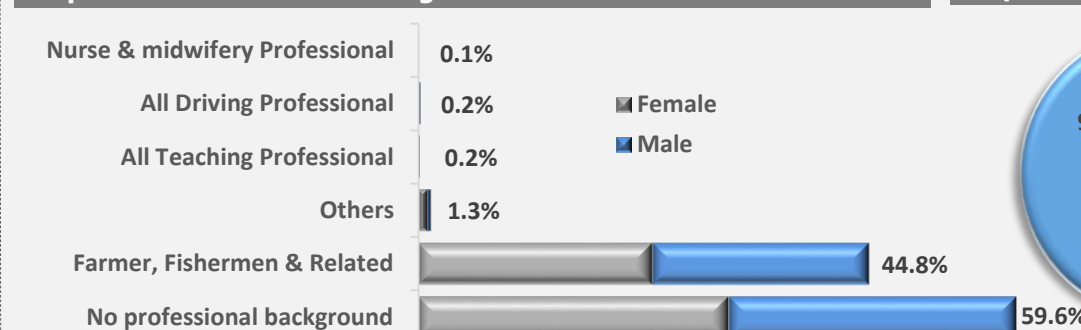
#### Localities of Origin of Registered Refugees



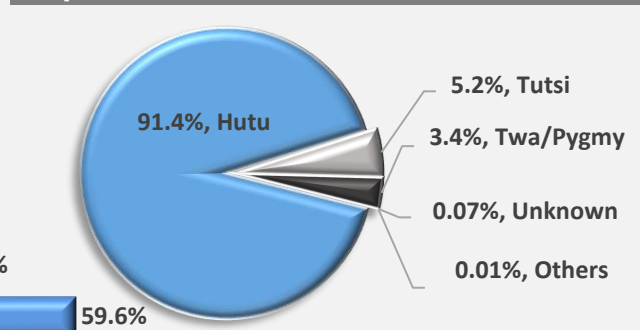
#### Age and Gender



#### Population Professional Backgrounds



#### Population Ethnicities



UNHCR gratefully acknowledges the support of the following partners in Nduta Camp :



This document is prepared by UNHCR. Creation Date : 06 Nov, 2017. For more information or suggestions please contact: Paul Nsiela (nsiela@unhcr.org) or visit: https://data2.unhcr.org/en/situations/burundi/location/2034