

# South Sudan Situation

16 - 31 October 2017

## 2,130,075\*

Total **South Sudanese refugees** in the region as of 31 Oct (pre and post Dec 2013 caseload)

## 646,444\*

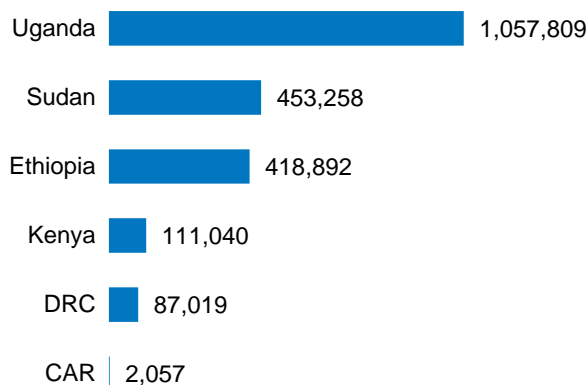
South Sudanese refugee **arrivals in 2017**, based on field reports as of 31 October

## 278,965

**Refugees in South Sudan** and **1.88 million IDPs** as of 31 October

### SOUTH SUDANESE REFUGEES AS OF 31 OCT 2017

#### Host Countries



#### New Arrivals

	In 2016 (Jan to Dec)	In 2017 (as of 31 Oct)
CAR	659	414
DRC	61,125	20,718
Ethiopia	53,661	73,857
Kenya	22,501	18,055
Uganda	489,234	347,398
Sudan	134,370	186,002
<b>TOTAL</b>	<b>761,550</b>	<b>646,444</b>

### KEY FIGURES\*

## 63%

of the South Sudanese refugee population are children (under the age of 18 years old)

## 4.29 million

Total population of concern (South Sudanese refugees, South Sudanese IDPs and refugees inside South Sudan)

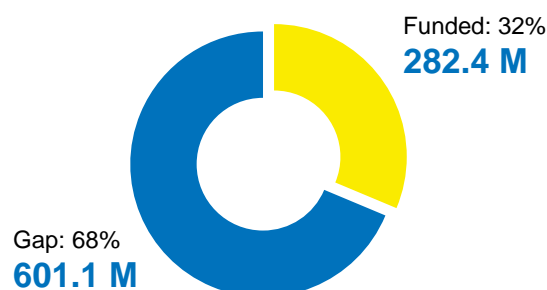
## 2,130,500

South Sudanese refugees are expected to be hosted in the region by 31 December 2017 (Revised 2017 RRP Planning figures)

### FUNDING (AS OF 27 OCTOBER 2017)

## USD 883.5 M

requested for the South Sudan situation



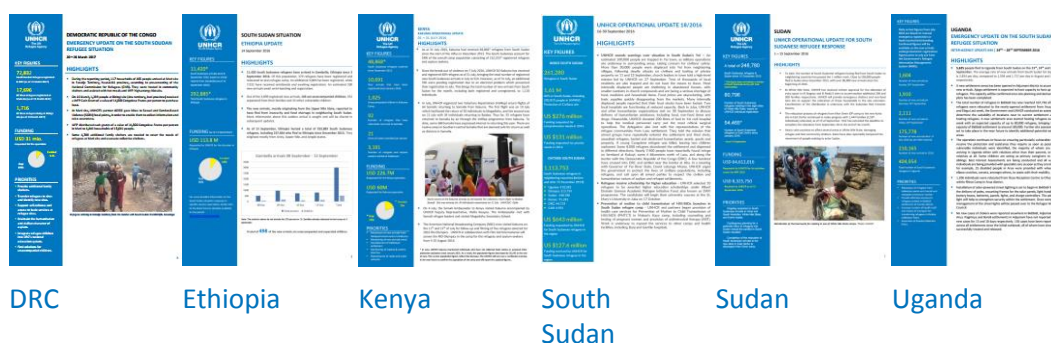
\* The population and arrival figures are based on best available information at the time of production. UNHCR continues to verify the numbers in all countries and future updates may vary as new information becomes available.

## Regional Highlights

- **Over 11,000 South Sudanese refugees fled South Sudan into neighbouring countries during the month of October.** There are now 2,130,075 South Sudanese refugees in the region, almost reaching the Regional Refugee Response Plan projection of 2,130,500 by 31 December 2017.
- **Senior UNHCR officials met with the US Ambassador to the United Nations, Nikki Haley, in Addis Ababa in late October to appeal for support to end the crisis that has displaced two million South Sudanese inside the country and provoked the flight of a further two million into all six neighboring countries.** Regional Refugee Coordinator for the South Sudanese Situation and Special Advisor to the High Commissioner, Arnaud Akodjenou and Ethiopia Country Representative, Clementine Nkweta Salami, briefed the US delegation on deliberations among humanitarian partners in Nairobi in mid-October, where partners projected a continued influx in 2018. Full press release [here](#).
- **In South Sudan,** UNHCR reinvigorated the process of accession of South Sudan to the 1951 Refugee Convention and its 1967 Protocol. During the roundtable in Juba, attended by 30 members of the South Sudan Transition National Legislative Assembly, the Minister of Humanitarian Affairs and Disaster Management Hon. Hussein Mar Nyuot urged parliamentarians to accelerate the ratification of this key international document.
- **In Uganda,** heavy rains have disrupted the refugee response in West Nile, causing damage to infrastructure and property and adversely affecting delivery of services to refugees.
- **In Sudan,** work to clear the land assigned for the new Aljame'ya refugee camp in White Nile began in October, with over 600 household plots demarcated so far, along with appropriate sites for administrative buildings and storage areas. The new camp forms an official extension of Al Waral camp and is being planned for 5,000 households to reduce overcrowding at Al Waral. A land extension project for Um Sangour camp to accommodate an additional 3,000 households is also underway. Both sites are expected to be completed by mid-January.

## Updates and Achievements

For more detailed information on the South Sudan situation response in specific country operations, kindly refer to the latest county updates, hyperlinked below and available on the portal: [data.unhcr.org/southsudan](http://data.unhcr.org/southsudan)



### SOUTH SUDAN

#### Latest developments

- **Members of the National Dialogue Steering Committee (NDSC) stated they have faced logistical challenges in pursuing dialogue in the different communities.** They appealed to the international community for support and more coordination in travel arrangements, to enable the team implement its activities without further delays.
- **The Ministry of Labor, Public Service, and Human Resource has adjusted work permit rates for foreign workers, which will be implemented as of 1 November 2017.** Accordingly, all foreign professional and business class individuals, including foreign aid workers for national and international NGOs, are required to pay \$10,000, blue class employee \$2,000 while casual workers will pay \$1,000 annually. All foreign workers had been previously paid \$100.

#### Achievements and Impact

- **In Juba, UNHCR reinvigorated the process of accession of South Sudan to the 1951 Refugee Convention and its 1967 Protocol.** During the roundtable attended by 30 members of the South Sudan Transition National Legislative Assembly, the Minister of Humanitarian Affairs and Disaster Management Hon. Hussein Mar Nyuot urged parliamentarians to accelerate the ratification of this key international document.
- **In Ajuong Thok, Unity, 33 men graduated from the four-month 'Engaging Men through Accountable Practices' training.** The men will sensitise communities on violence against women and the role men can play to minimise such abuse.
- **In Unity, eight new SGBV cases were reported** (six in Ajuong Thok and two in Pamir), with survivors provided with case management services.

- **In Pamir, UNHCR trained 31 Youth Peer Educators to carry out awareness on SGBV through peer-to-peer sessions.** UNHCR also conducted Child Protection training for 60 staff from Lutheran World Federation (LWF) and UNHCR.
- **In Yei, UNHCR and its partner UMCOR recorded seven SGBV cases** in Kukuyi, Yago and Jabara refugee hideout locations (where refugees have been living since the attack on Lasu refugee settlement in September 2016) and Yei town. The survivors and their family members received psychosocial counselling.
- **In Yusuf Batil and Doro refugee camps, UNHCR and Danish Refugee Council (DRC) conducted a two-day refresher training for 67 focal points and advocates on SGBV,** including prevention, response and advocacy skills.
- **In Yusuf Batil, Kaya and Doro refugee camps, Upper Nile, UNHCR and partners Relief International (RI) and ACTED facilitated climate-smart nutrition-focused perma-gardening training for 190 refugees.** Five perma-gardens were established and refugees received tools and vegetable seeds.
- **In Yusuf Batil and Gendrassa refugee camps, Upper Nile, UNHCR and partners RI, ACTED, DRC, SCI, SP and Humanitarian Development Consortium (HDC) facilitated host community and refugee farmers participation in joint agriculture trade fairs.** At the event, 151 farmers exhibited agricultural produce including staple crops, vegetables, poultry and handicraft items. The event promoted market access and increased cash income for refugee and host communities, while creating awareness on livelihood interventions.
- **In Melut, UNHCR concluded the Comprehensive Household Survey for IDPs inside the POC and New Palouge Primary School Site** to ascertain actual return/relocation intentions and intended places of return. This will facilitate planning and preparation to support the possible relocations or return of the IDPs, with the overall aim of phasing out of the POC. Preliminary reports indicated that the majority of families in the Melut POC have expressed willingness to return to their place of origin. However, many have expressed concerns about the lack of security on the roads and preference for air transport.
- **In Mingkaman, UNHCR distributed sanitary kits to 1,000 IDP women and girls of reproduction age** as a result of identification done by UNHCR, HDC and South Sudan Women Empowerment Network (SSWEN).

## Countries of Asylum

### CENTRAL AFRICAN REPUBLIC

#### Achievements and Impact

- **During the reporting period, 72 refugee children were enrolled into public primary schools in Obo and provided with school kits.** The *Commission Nationale pour les Réfugiés* (CNR) continues to encourage refugees to enrol their children in local schools.

- **On 20 October, the first three WFP trucks to use the new supply route from Uganda arrived in Obo with food assistance.**
- **The construction of semi-permanent shelters for persons with specific needs continued.** Some 100 out of the 140 shelters planned through this programme have now been completed and are housing refugees. A further 20 families received construction kits, with technical support and guidance provided by UNHCR's partner Vision to Change the World (VCW).
- **Sanitation facilities have now been put in place for nearly 3.5 hectares in the refugee camp.** During the reporting period, the WASH team also chlorinated one hand pump in the camp.

## DEMOCRATIC REPUBLIC OF THE CONGO

### Latest developments

- **A total of 652 South Sudanese refugees were biometrically registered in the DRC during the second half of October.** As for previous months, the majority (84 per cent) was registered at the Meri site (Haut-Uélé province) and a smaller number at the Biringi site (Ituri province). A total of 1,593 refugees were biometrically registered in the full month of October, representing an increase from the 1,074 registered in September. Refugees continued to report fighting and insecurity in South Sudan as their main reason for flight.

### Achievements and Impact

- **UNHCR conducted a protection and security assessment of Aru territory's border areas (Ituri province) during the reporting period.** Despite advocacy by UNHCR and its partners to promote the relocation to the Biringi site, where asylum seekers can be registered and receive assistance, many refugees still live in the border areas due to cultural ties, a desire to remain close to South Sudan and access to land for farming.
- **In an effort to strengthen local capacities, UNHCR and the National Commission for Refugees (CNR) trained local authorities in Aba (Meri site) on international refugee protection principles** aiming at fostering peaceful coexistence between refugees and host communities.
- **Since the beginning of the year, 107 cases of sexual and gender-based violence have been reported in Meri and 67 in Biringi.** While UNHCR provided the victims with medical and psychosocial assistance, access to justice proved to be challenging due to shortcomings or even absence of local judiciary structures.
- **In Biringi refugee site, UNHCR handed over a primary school with three classrooms and a health post to the local authorities and the facilities began operating.** The school can receive 180 refugees and children from the local community. In 2017, UNHCR completed six classrooms in Biringi and six at Meri site. The new health post replaced the temporary health post made of plastic

tarpaulins, and provides eight beds and cabinets for nutritional screenings, prenatal and other medical consultations, as well as a pharmacy.

- **Construction works began at the recently allocated Kaka refugee site near the town of Dungu (Haut-Uélé province).** UNHCR provided refugees with building material and expert knowledge of an engineer for construction of a first group of 170 family shelters with latrines, which will house 500 refugees. UNHCR's partner African Initiatives for Relief and Development (AIRD) will assist the most vulnerable with shelter construction. Water access will be provided through new wells and a primary school and health post will be rehabilitated. Almost 300 refugees have settled on the grounds of the site since the beginning of October and are in desperate need of basic infrastructure and services, while others remain in the volatile border region waiting to be relocated.

## ETHIOPIA

### Latest developments

- **183 new arrivals were registered in the Benishnagul-Gumuz Region (Assosa), while no new registrations in the Gambella Region during the reporting period.** In Gambella, 175 individuals, including 24 who missed the last relocation convoy, have signed up to relocate to Gure-Shembola camp (Assosa) in the next convoy.
- **All new arrivals since the recent major influx in September 2017 have undergone preliminary registration in Nguenyyiel Camp.** Level II registration has continued, with a total of 2,342 individuals (451 families) registered and issued with proof of registration documents to date.
- **Some 60 per cent of all the new arrivals since in 2017 originated from Upper Nile State** (Nasir, Longechuk, Mathiang, Ulang and Maiwut Counties), while 35 per cent came from Jonglei State (Uror, Akobo and Ayod Counties). The remaining five per cent fled from the Unity State.

### Achievements and Impact

- **Refugees in Tierkidi and other camps have started registering their lives' vital events, including births, marriage, divorce and death, as part of the nationwide rollout of the civil registration of refugees.** The President of the Gambella Peoples' National Regional State attended an event in Tierkidi camp to launch the rollout.
- **Preparations are ongoing in all refugee camps to mark the 16 Days of Activism against Sexual and Gender based Violence (SGBV),** which begins on 25 November, under the theme: "Leave No One Behind – Working Together to End Sexual and Gender Based Violence".
- **UNHCR partner World Vision inaugurated a secondary school in Jewi Camp, addressing one of the major sectoral gaps.** The school will serve Grade 9 and

10 students from the refugee and host communities. World Vision also launched an Accelerated Learning Programme (ALP) for over-aged children in Jewi, with 751 students already registered to attend classes.

- **As part of the government's commitment to increase refugee children's primary school enrolment rate, the construction of temporary learning spaces has started in all the camps in Gambella.** The construction of eight blocks of 32 semi-permanent classrooms is also ongoing in Nguenyyiel Camp to accommodate more students.
- **In Nguenyyiel camp, a new health post was opened to enhance access to health services** while an additional facility is being established in Zone D, where the majority of the most recent new arrivals have been accommodated.
- **In Pugnido camp, over 97 per cent of shelters (5,638) were sprayed with indoor residual spray,** protecting 54,104 people from malaria.
- **An average of 16.5 litres of potable water per person per day was provided to refugees in the Gambella Region.** In Nguenyyiel Camp, an additional 292 emergency latrine stances, 140 new household latrines, 270 emergency bathing shelters and five permanent tap stands were constructed.
- **All of the almost 30,000 recently arrived refugees in Nguenyyiel Camp have been assigned to emergency shelters and issued with plots for setting up transitional shelters.** During the reporting period, 488 transitional shelters were constructed in the same camp, bringing the total to 2,228.

## **KENYA**

### **Latest developments**

- **A total of 111,040 South Sudanese refugees are now hosted in Kenya,** including Kakuma, Kalobeyei, Dadaab and urban areas, surpassing the 2017 RRP projection of 108,000 South Sudanese refugees by 31 December 2018.

### **Achievements and Impact**

- **Child protection activities were ongoing in Kakuma camp and Kalobeyei settlement for all refugee children of various nationalities.** Child protection partners conducted a total of 702 home visits, reaching 4,220 (1,673 female) children in child headed households, foster families, those living with caregivers and other vulnerable children to establish their wellbeing and monitor their progress. A total of 2,367 children went through play therapy in Kalobeyei settlement to improve their psychosocial well-being and positively cope with challenges such as trauma. A further 6,170 children in Kakuma and Kalobeyei participated in child-to-child activity sessions.
- **Thirteen new cases of SGBV were reported among the South Sudanese refugee population.** All survivors were offered comprehensive medical and psychosocial support.



- **A total of 4,742 (1,231 female) refugee students sat for the 2017 Kenya Certificate of Primary Education** across 20 examination centres in Kakuma camp and Kalobeyei settlement.
- **The construction of permanent shelters is ongoing in Kalobeyei settlement.** UNHCR plans to complete 300 shelters by the end of the year. In October 2017, a total of 71 shelters were constructed. The permanent shelters will provide refugees and host community a dignified place to live and promote social integration.

## **SUDAN**

### **Latest developments**

- **Work to clear the land assigned for the new Aljame'ya refugee camp in White Nile began in October, with over 600 household plots demarcated so far, along with appropriate sites for administrative buildings and storage areas.** The new camp forms an official extension of Al Waral camp and is being planned for 5,000 households to reduce overcrowding at Al Waral. A land extension project for Um Sangour camp to accommodate an additional 3,000 households is also underway. Both sites are expected to be completed by mid-January.
- **Demolitions and forced relocations of refugees in Khartoum's 'Open Areas' continued during the reporting period.** On 23 October, local police demolished the makeshift shelters of 220 families living in the Haj Yousif open area, but were not relocated. UNHCR estimates that over 3,000 households have been relocated to Bantiu or Naivasha sites in 2017 so far, with an estimated current population at the Bantiu site of over 4,200 households (~21,000 individuals). UNHCR is urgently pushing for an inter-agency assessment of the open areas to ensure that support is better planned and offered by response partners. A draft assessment TOR has been shared with COR, HAC and state Community Voluntary Humanitarian Work department (CVHW), and initial planning workshops are underway with a tentative date for the assessment set for mid-November.
- **At the end of October, four hand pumps and a valve broke down at the Dar Batti settlement, North Kordofan, which has led to a critical water shortage affecting an estimated 12,000 refugees.** Currently, the state Government's Water & Environmental Sanitation department (WES) are rehabilitating two mini water yards, as well as the repair of two hand pumps. In the meantime, UNHCR and Care International Switzerland continue to truck 25,000L of water each day to the Dar Batti School, and UNHCR will support the trucking of 100,000L per day to the settlement from November, which will improve water supply access to a minimum of 7.5L per person per day until the rehabilitation work is completed.

### **Achievements and Impact**

- **In East Darfur, WFP and UNHCR conducted joint Cash Based Intervention (CBI) assessments (25 September to 10 October) in Kario and Al Nimir**



**refugee camps and local markets in Ed Daein** to assess the feasibility of CBI for food assistance to South Sudanese refugees. Data analysis is underway and a report of findings is expected to be finalized by end of November.

- **UNHCR's national partner El Ruhama Organization continued implementing a protection-based livelihoods programme for 45 women-head households from both the refugee and host communities in El Meiram and Kharasana.** The programme is supporting the women to establish small businesses through tea and traditional perfume making that can be sold in local markets.
- **WHO and Ministry of Health (MoH) have reported a significant decrease in cases of acute watery diarrhoea (AWD) across all states in Sudan.** Over the last two weeks, there have been no new cases of AWD among South Sudanese refugees in East Darfur, White Nile and South Kordofan. Response activities will continue until four-week consecutive zero case reporting is achieved nationwide in order to ensure the AWD outbreak has ended completely.
- **In White Nile State, timely referrals saved the lives of 53 pregnant refugee women in October suffering from a range of critical complications including antepartum hemorrhage, obstructed labour, anemia and malaria.** UNFPA supported the training of 80 medical service providers on reproductive health issues, including clinical management of rape, psychosocial support, standard obstetric care and maternal deaths protocols. UNFPA also led awareness sessions for 200 refugee women to enhance their understanding of reproductive health issues and inform them on where, when and how to access care.
- **After several weeks of not being able to reach El Radom locality, South Darfur, due to bad roads from the rainy season, WFP was finally able to deliver 206 MT of food supplies to feed over 24,000 refugees living in the settlements.** UNHCR anticipates that approximately 1,000 additional refugees are currently waiting in Kafia Kinji to transit to El Radom once road conditions improve.

## UGANDA

### Latest developments

- **A total of 3,512 South Sudanese refugees arrived in Uganda in October.** New arrivals continue to report ongoing fighting between armed groups, particularly in Kajo Keji and Yei counties, as their reason for flight. In Yei county, civilians were reportedly warned to leave their villages to avoid being caught up in the crossfire. Other reasons cited include hunger as a result of war and drought in South Sudan, and lack of access to basic services such as healthcare and education.
- **Heavy rains have disrupted the refugee response in West Nile,** causing damage to infrastructure and property and adversely affecting delivery of services.

### Achievements and Impact

- **UNHCR and partners conducted an age, gender and diversity mainstreaming exercise in all 19 settlements in Adjumani.** Refugees were identified with the support of refugee community leadership structures, grouped according to age and gender and engaged in focus group discussions on specific thematic areas including SGBV, Child Protection, Education, Livelihoods, Food, Shelter, Environment, Energy, Health, WASH, Infrastructure, Security, and Peaceful Coexistence. The findings will be shared in due course.
- **In Lamwo, biometric registration commenced in Palabek settlement.** Continuous biometric registration is ongoing across the settlements.
- **As part of capacity building in Arua, case conferencing was initiated in Rhino Camp to orientate new child protection case workers in case management.** At the end of the conference, case workers were tasked to follow up the recommendations offered and provide feedback. In Lamwo, 40 Child Protection Committees were trained on case identification, documentation and reporting.
- **In Bidibidi, a campaign to incorporate gender into livelihoods and other sectors has improved multi-sectoral coordination of SGBV prevention and response.** As a result, two livelihoods partners have introduced gender and SGBV prevention activities into their programmes.
- **In Arua, the construction of classrooms and teachers' accommodation is ongoing** in villages 2, 3, 4 and 5 of Omugo settlement, Rhino Camp Extension.
- **World Mental Health Day was commemorated in Palabek Settlement, Lamwo,** with key activities including mental health assessment of refugees and humanitarian actors, review of those already receiving mental health care, health education with an emphasis on mental health promotion and prevention of mental illness and educative drama by the psychosocial support group. 94 individuals were evaluated and treated during the outreach.
- **In Palorinya, Moyo District, prioritization of infrastructural development for health centres in the settlement was completed.** Construction of health centre structures is now due to commence.
- **The average safe water supply was 12 litres/person/day (l/p/d) in Imvepi and Rhino, 15 l/p/d in Adjumani and Lamwo, and 16 l/p/d in Moyo.** In Bidibidi, a motorized water system was launched, making it possible for refugees to collect water from eight points. This is expected to greatly reduce reliance on water trucking.
- **In Bidibidi, a distribution of essential non-food items commenced on 11 October in Zone 4,** with a total of 30,328 individuals receiving soap, and 4,708 women and girls provided with sanitary pads and soap.
- **In Arua, diverse initiatives to help refugees and host communities improve their livelihoods and gain a measure of self-sufficiency continued, including agriculture, livestock breeding, income generation and vocational training.** The work included: monitoring the progress being made by village savings and

loans associations, as well as that of farmer field schools which were busy with harvests; training leaders of farmers' groups on leadership and group dynamics; involving young people in cash for work; delivering vegetable seed and farm tools in Omugo zone; monitoring grinding mills, hair salons, bakeries, piggeries, poultry and other income-generating projects; and enabling groups to gain access to cash grants to start or sustain their small businesses.

## Critical Needs and Priorities

### DEMOCRATIC REPUBLIC OF THE CONGO

**Protection:** UNHCR's access to a considerable number of asylum seekers and refugees in the border areas of the Dungu territory (Haut-Uélé province) remains very restricted due to ongoing incursions by armed groups. UNHCR provided direct assistance to the refugees in and around Dungu center whilst implementing partners assisted persons of concern in Duru, Bitima, Mogoroko and Doruma. Over the past three months, CNR and UNHCR identified an increasing number of ex-combatants among the asylum seekers during the screening exercises. CNR referred the individuals concerned to the Congolese authorities; however, in absence of appropriate infrastructures to host these ex-combatants their future remained unclear.

**Shelter:** 5,570 families in Meri and 560 in Biringi urgently require an individual shelter. They live in overcrowded transit hangars or are hosted in huts of other refugees or Congolese host families. Only 39 per cent of all families in Meri and 61 per cent in Biringi have a family shelter.

### ETHIOPIA

**Shelter:** Limited transitional shelter solutions available to a large number of refugees settled in camps around Gambella continues to be a major challenge, with many families remaining in emergency shelters for an extended period of time.

**Camp Coordination and Camp Management:** Access to most parts of Nguenyiel Camp remains a challenge especially during the rainy season. More access gravel roads and drainage channels need to be constructed to address the problem.

### KENYA

**Education:** Inadequate education facilities, including classrooms, toilets, desks, WASH and play facilities, is causing school congestion and preventing the enrolment of out-of-school children. An insufficient number of teachers and the low number of female teachers, limited training opportunities, and low remuneration is also affecting education quality.

**Shelter:** Approximately 8,000 families live in temporary shelters in Kalobeyei. With the provision of 800 permanent shelters by the end of 2017, the need for adequate shelters will continue to be significant. Approximately 2,000 new arrivals have been provided with family tents in Kakuma camp, which need to be replaced with more adequate shelters.

## **UGANDA**

**Protection:** Issues with network speed are slowing down the registration process. Children in foster care are not receiving sufficient school materials and financial support, adversely affecting their education.

**Education:** In Rhino Camp, delays in the delivery of school materials are impacting learning.

**Health:** In Bidibidi, there is a need for motorcycles to facilitate outreach activities. The district requires stocks of tuberculosis and antiretroviral (ARV) drugs to be replenished. Mapping of pregnancies, identification of traditional birth attendants and the training of health workers on basic emergency obstetric care must be implemented to reduce maternal mortality. Adjumani District Hospital, which handles a high caseload of referrals from the refugee community, requires structured support to mitigate shortages of staff, medicines and health supplies.

**Nutrition:** In Imvepi, there is a high defaulter rate in the targeted supplementary feeding programme, which adversely affects the recovery of beneficiaries. Village health teams have been trained in community nutrition services and are monitoring defaulters. In Rhino Camp, health facilities continue to experience shortages in nutrition supplies.

**Shelter and NFIs:** Incomplete packages of non-food items remain a challenge, with stocks of items such as solar lamps, blankets, soap and mats needing replenishment.

## Financial Information

UNHCR is very grateful for the financial support provided by donors who have contributed to their activities with unearmarked and broadly earmarked funds as well as for those who have contributed directly to the operation.

### Donors who have contributed to the operation:

- |   |                                       |
|---|---------------------------------------|
| ■ United States of America                    | ■ UNDP                                |
| ■ Germany                                     | ■ Private Donors Australia            |
| ■ United Kingdom                              | ■ Nando Peretti Foundation            |
| ■ European Union                              | ■ Country-Based Pooled Funds          |
| ■ Japan                                       | ■ Private Donors Switzerland          |
| ■ CERF  | ■ United Arab Emirates                |
| ■ Norway                                      | ■ France                              |
| ■ Denmark                                     | ■ Bill & Melinda Gates Foundation     |
| ■ Australia                                   | ■ African Union                       |
| ■ Sweden                                      | ■ Private Donors Sweden               |
| ■ Finland                                     | ■ International Olympic Committee     |
| ■ Private Donors Germany                      | ■ U.N. Foundation (UNFIP)             |
| ■ Ireland                                     | ■ Private Donors Canada               |
| ■ Austria                                     | ■ Private Donors Spain                |
| ■ Educate a Child Programme                   | ■ Private Donors Japan                |
| ■ UNIQLO Co. Ltd                              | ■ Private Donors China                |
| ■ Canada                                      | ■ Private Donors USA                  |
| ■ Belgium                                     | ■ Private Donors Italy                |
| ■ IKEA Foundation                             | ■ Private Donors United Kingdom       |
| ■ IGAD  | ■ Holy See                            |
| ■ Church of Jesus Christ of Latter-Day Saints | ■ Private Donors United Arab Emirates |
| ■ Missionarie del Sacro Cuore di Gesù         | ■ Private Donors Brazil               |
| ■ Luxembourg                                  | ■ Private Donors Austria              |
|   | ■ Private Donors France               |

### Funding (in million USD)

A total of **282.4 million** has been funded as of 27 October 2017

## External / Donors Relations

### Special thanks to the major donors of unrestricted and regional funds in 2017

United States of America (266 M) | Sweden (76 M) | Private Donors Spain (54 M) | Netherlands (52 M) | United Kingdom (45M) | Norway (41 M) | Japan (25 M) | Denmark (23 M) | Private Donors Republic of Korea (23 M) | Australia (19 M) | Canada (16 M) | Private Donors Italy (15 M) | Switzerland (15 M) | France (14 M) | Private Donors USA (14 M) | Private Donors Japan (14M) | Germany (12 M) | Private Donors Sweden (11 M) | Italy (10 M) |

### Thanks to other donors of unrestricted and regional funds in 2018

Algeria | Austria | Belgium | Bosnia and Herzegovina | Chile | Costa Rica | Estonia | Finland | Holy See | Iceland | Indonesia | Ireland | Kuwait | Lithuania | Luxembourg | Malta | Mexico | Monaco | Morocco | New Zealand | Portugal | Qatar | Republic of Korea | Russian Federation | Saudi Arabia | Serbia | Singapore | Spain | Sri Lanka | Thailand | Turkey | United Arab Emirates | Uruguay | Zambia | Private Donors

### CONTACTS

**Laura Swanson**, Associate Information Management Officer (Reporting), Nairobi  
swanson@unhcr.org, Tel: +254 20 422 2205, Cell +254 729 806 149

**Wendy Rappeport**, Senior External Relations Officer, Geneva  
rappepor@unhcr.org, Tel: +41 (0) 22 739 8993, Cell +41 (0) 79 881 91 83

### LINKS

Regional Data Portal: <http://data.unhcr.org/SouthSudan/regional.php>

UNHCR South Sudan Situation page: <http://reporting.unhcr.org/node/20>

Recent News Story: <http://www.unhcr.org/news/stories/2017/10/59d5f95d4/defying-screams-gunfire-south-sudanese-family-flees-safety.html>