

## WHAT IS IT?

Prior to the establishment of ActivityInfo in 2014, multiple sectors and agencies were planning and reporting activities through different means and on different schedules. This was leading to a duplication of reporting and planning and lack of efficiency in management of information.

The IMWG, co-chaired by OCHA and UNHCR decided on the adoption of a single tool, developed using an open source tool (ActivityInfo), for planning and reporting on aggregated activities for all sectors and agencies in the Lebanon operation. The tool has significantly facilitated coordination through the tracking of various agencies' activities across the country as well as identifying unmet needs.

## HOW DO I USE IT?

A comprehensive guide to using ActivityInfo is available on the UN Information Management Dropbox. Go to [www.data.unhcr.org/lebanon/](http://www.data.unhcr.org/lebanon/) and navigate to the Dropbox link. The folder includes:

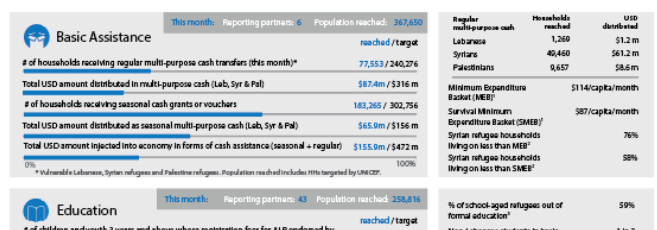
- User guides,
- Contact lists for sector leads and IM focal points,
- 2017 SOPs,
- Lists of indicators with descriptions for Basic Assistance, Food Security, Shelter, Protection, SGBV and Health,
- Location Codes for ActivityInfo,
- 2017 Partner Reporting Deadlines.

## WHY IS IT USEFUL?

Data collected on Activity Info allows the humanitarian community in Lebanon to:

- Measure achievements over time
- Create monthly statistical dashboards showing sector progress towards targets on key indicators

### 2017 October Statistical Dashboard



- Identify needs and gaps by sector
- Pull specific figures e.g. 380 consultations were given in the Bar Elias PHC
- Generate 'Who does What Where' maps easily

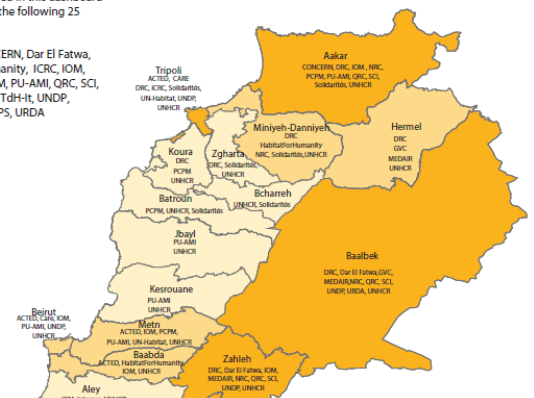
### SHELTER 2017 Quarter 1 - 3W Map



#### Organizations per district

The achievements described in this dashboard are the collective work of the following 25 organizations:

ACTED, CARE, CISP, CONCERN, Dar El Fatwa, DRC, GVC, HabitatForHumanity, ICRC, IOM, MEDAIR, MoSA, NRC, PCPM, PU-AMI, QRC, SCI, Solidar Suisse, Solidarités, TdH-H, UNDP, UN-Habitat, UNHCR, UNOPS, URDA



## HOW CAN IT BE IMPROVED?

- Service mapping
- Make data upload less time consuming
- Ensure ActivityInfo indicators are aligned with other reporting requirements to the extent possible
- Minimize disaggregations requested (age, gender) where possible

### I. GETTING STARTED

In Lebanon, monitoring and reporting is done through ActivityInfo, an online monitoring tool. Each sector working group has a database in ActivityInfo that is organized to fit its specific requirements.

Each database allows partners to store, access, manage, map and analyze data on defined indicators, and thus to monitor humanitarian projects.

#### START ACTIVITY INFO

To start the program, go to: [www.activityinfo.org](http://www.activityinfo.org)

