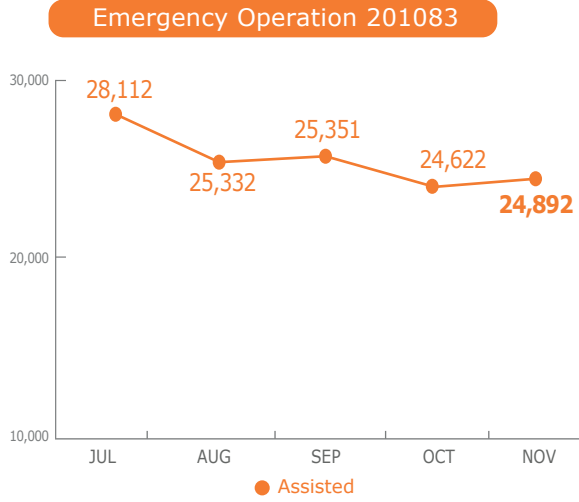
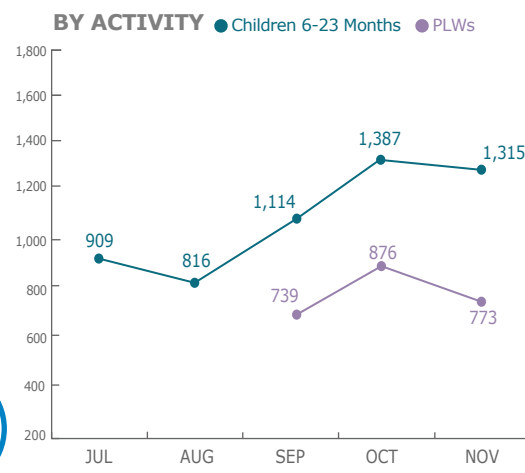


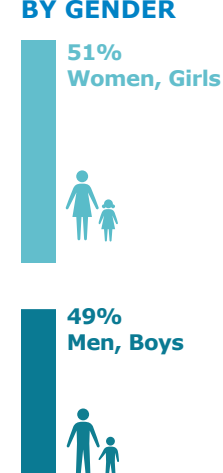
PEOPLE ASSISTED



OPERATIONAL PROFILE



BY GENDER



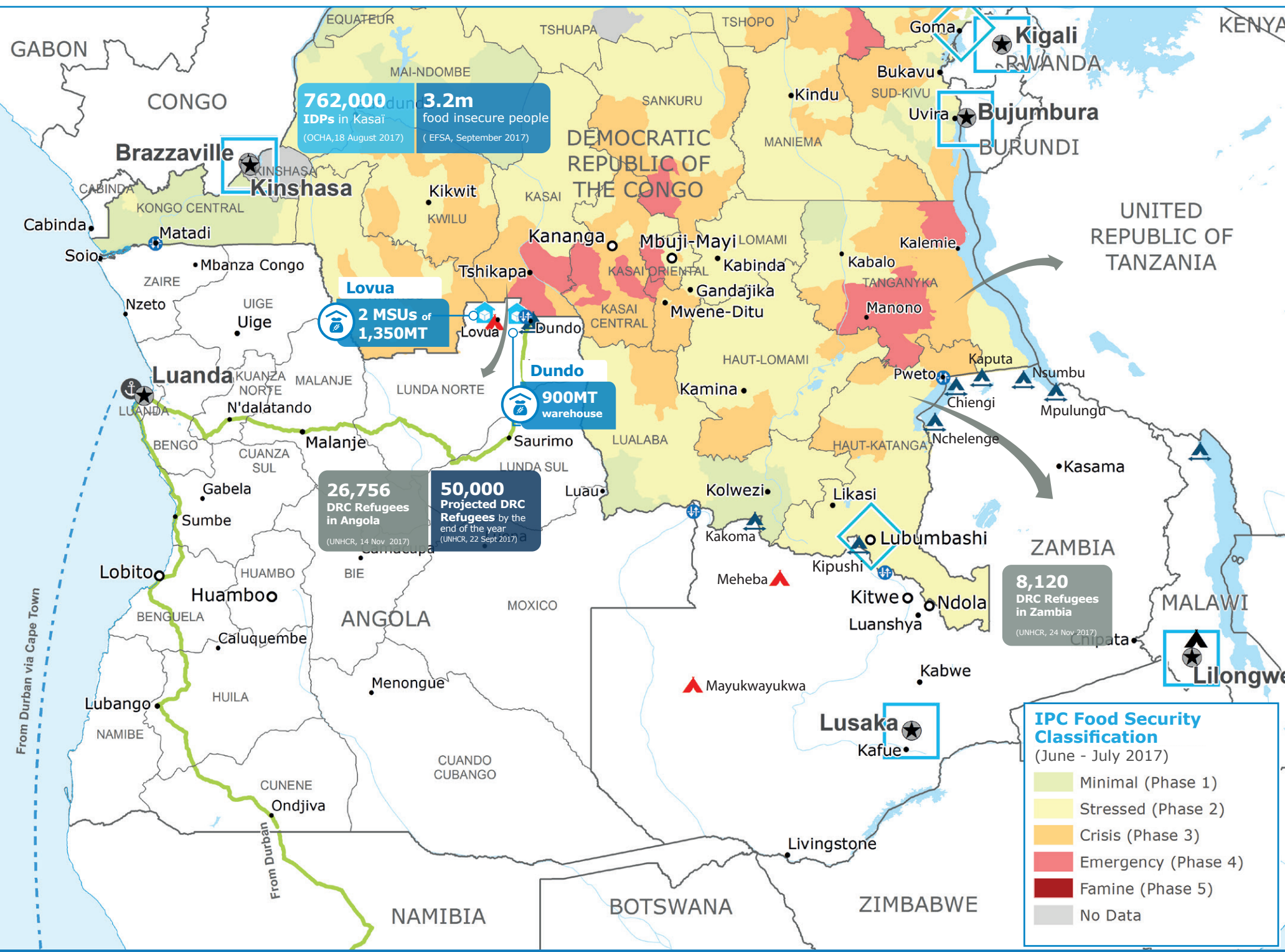
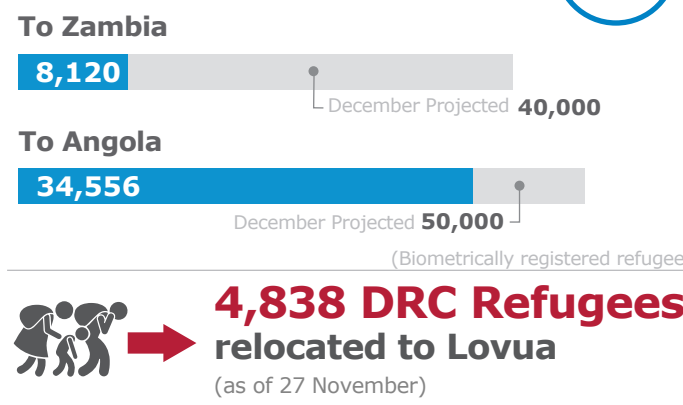
FUNDING

Emergency Operation 201083

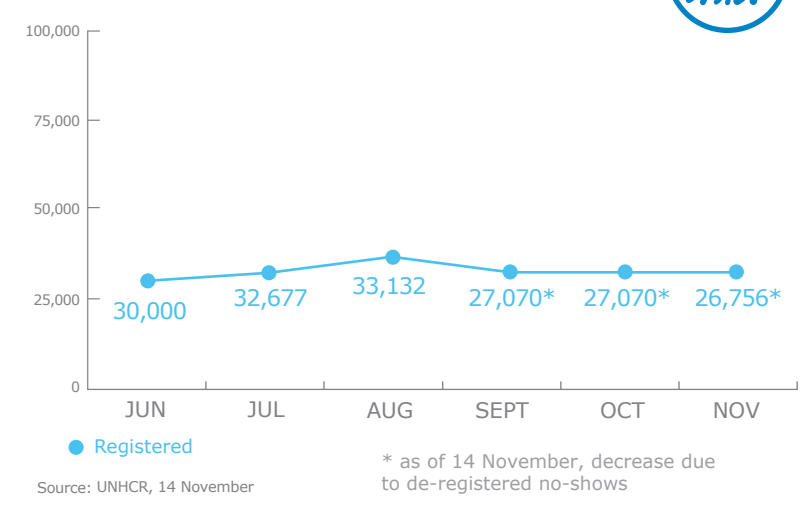
December 2017 - July 2018

US\$ 9.3 m needed to cover projected food requirements for up to **50,000 refugees**

DRC REFUGEE MOVEMENTS INTO REGION (in 2017)

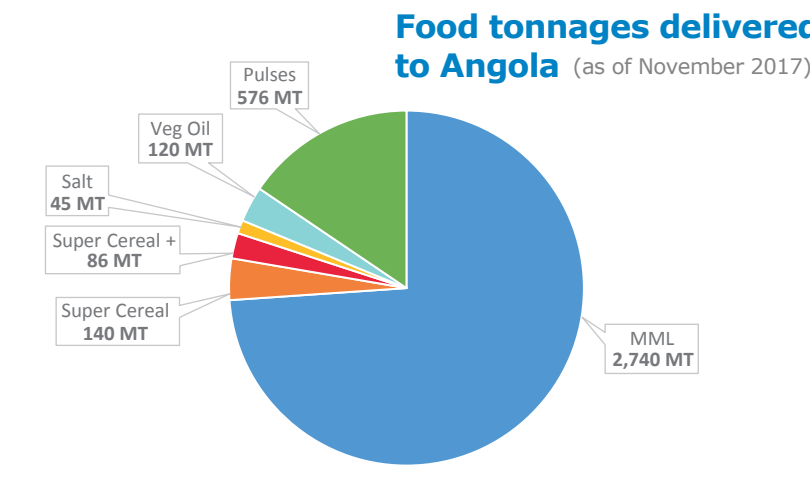


DRC REFUGEE MOVEMENTS IN ANGOLA



75% of Congolese refugees in Angola are women and children

Source: UNHCR, 02 October



For more information, see the latest **SITUATION REPORT**

2A EMOP 201083

<http://documents.wfp.org/stellent/groups/public/documents/ep/wfp292943.pdf>

Produced by the WFP **Operations Centre (OPSCEN)** jointly with Country Offices and Regional Bureau Johannesburg

This dashboard is based on best available information at the time of production. Future updates may vary as new information becomes available.

Legend:

- Country Office
- Area Office
- Warehouse
- Refugee Settlement
- Reception Centre
- Border Crossing Point
- Port
- Road Supply Route
- Sea Supply Route
- National Capital
- Major Town
- Intermediate Town
- Small town
- International Boundary
- Province boundary
- Surface Waterbody

Sources: WFP, UNGIWG, GAUL, GLCSC, OCHA, UNHCR, IPC

The designations employed and the presentation of material in the map(s) do not imply the expression of any opinion on the part of WFP concerning the legal or constitutional status of any country, territory, city or sea, or concerning the delimitation of its frontiers or boundaries.

© World Food Programme 2017