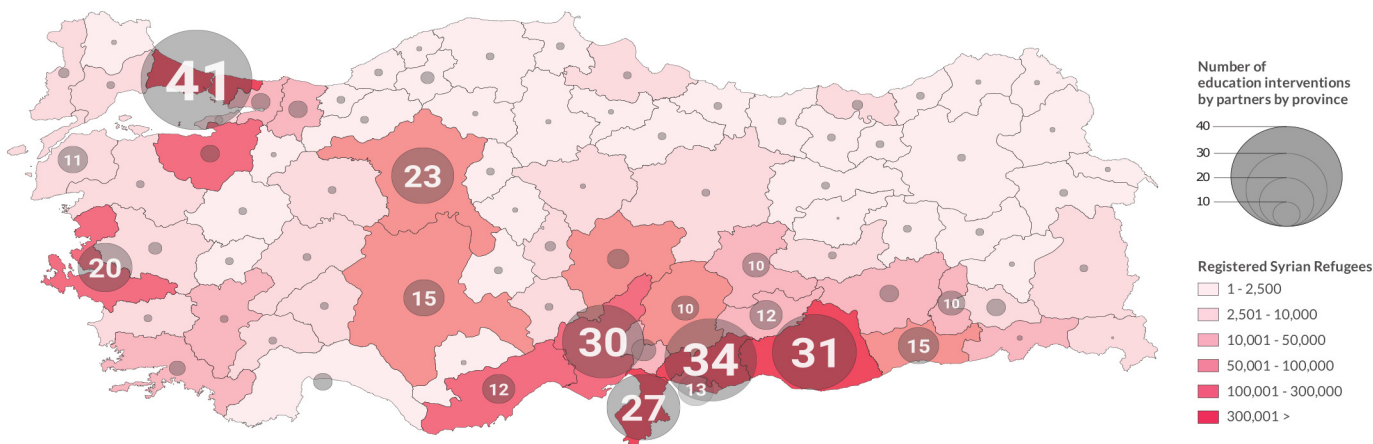




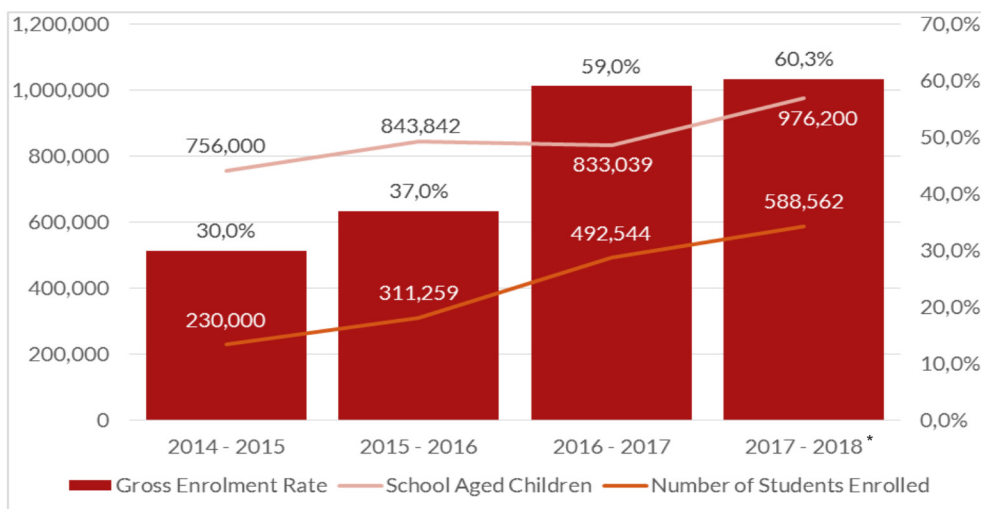
**COUNTRY COVERAGE:  
NUMBER OF REGISTERED SYRIAN REFUGEES AND NUMBER OF EDUCATION INTERVENTIONS BY PROVINCE**



**SECTOR OVERVIEW AND ACHIEVEMENTS**

During the summer months and throughout September, MoNE and 3RP partners conducted a comprehensive “Back to School” campaign across the country aimed at increasing Syrian refugee children’s access to and enrolment in Turkish public schools and Temporary Education Centres. As a result of these efforts, the number of Syrian children enrolled in formal education reached nearly 600,000 at the start of the school year; this is an increase of 25% over the numbers enrolled at the same time in 2016. More than half of those enrolled are attending Turkish public schools (59%), demonstrating the success of ongoing efforts by MoNE to encourage enrolment in the national education system, particularly at the primary level.

Comparison of Syrian students’ Gross Enrolment Rates for 4 academic years



\* MoNE - 30 September, 2017

3RP partners, with the Education Working Group in South East Turkey, jointly developed advocacy messages to be used by organisations when conducting outreach activities. The Working Group also shared suggested “Back to School” activities with partners that included practical support to parents wishing to enrol their children in schools, distribution of stationery items, pamphlets on the Conditional Cash Transfer for Education (CCTE) programme and information events for parents and children.

Mirroring the increase in enrolment in formal education, the number of Syrian youth enrolled in higher education continued to increase to just over 20,000. Just over 1,600 youth completed higher education preparation programmes and a further 3,500 students will be enrolled in these programmes over the next quarter. 3RP partners continue to provide 1,152 students with scholarships, in addition to those offered by the Presidency for Turks Abroad and Related Communities (YTB).

## SECTORAL EFFORTS TO ADDRESS BARRIERS TO SCHOOL ENROLMENT

Despite the progress made in increasing school enrolment, over 37% of school-aged Syrian children remain out of school. While enrolment in primary grades is high, only 23% of secondary aged children are enrolled, leaving Syrian adolescents and youth exposed to a number of protection risks, including economic exploitation, early marriage and social isolation.

During the “Back to School” outreach events parents reported a number of barriers to enrolling their children in education. The language barrier remains a significant obstacle to enrolling in Turkish schools, affecting both the academic performance and social inclusion of children. Sector partners have sought to address this through providing MoNE with almost half a million Turkish language learning textbooks to support the teaching of Turkish in TECs and public education centres. 3RP partners have also provided language classes aimed at preparing children for enrolment in Turkish schools. Parents continue to voice concerns that children may lose the ability to read and write in Arabic. 3RP partners also conducted a range of joint social activities for Turkish and Syrian children during the summer break in order to foster social cohesion ahead of the start of the school year.

Efforts have also been taken to address socio-economic barriers to education through the expansion of the CCTE programme for refugee children. The procurement of 300,000 school bags and stationery kits has been completed and will be soon distributed to Syrian and vulnerable Turkish children.

Additional classrooms, particularly for early childhood education, are being constructed to create additional learning spaces for more Syrian and vulnerable Turkish children to enroll in early childhood education.

MoNE has indicated that it is taking steps to standardise enrolment procedures and to facilitate the enrolment of children who are waiting for temporary protection ID cards to be issued.

## INCREASING ACCESS TO EDUCATION OPPORTUNITIES (RESULTS ACHIEVED)

|  |      | Reached / Targeted | Girls           | Boys          |
|--|------|--------------------|-----------------|---------------|
| # of children enrolled in ECE and pre-primary education <sup>1</sup>         | 145% | 32,403* / 22,400   | 16,165          | 16,238        |
| # of Syrian children enrolled in formal education (Grades 1-12) <sup>2</sup> | 143% | 588,562* / 412,200 | 292,361         | 296,201       |
| # of children enrolled in informal non-accredited education                  | 17%  | 15,200 / 89,290    | 8,110           | 7,090         |
| # of students enrolled in tertiary education                                 | 60%  | 15,080 / 25,000    | Female<br>5,316 | Male<br>9,764 |

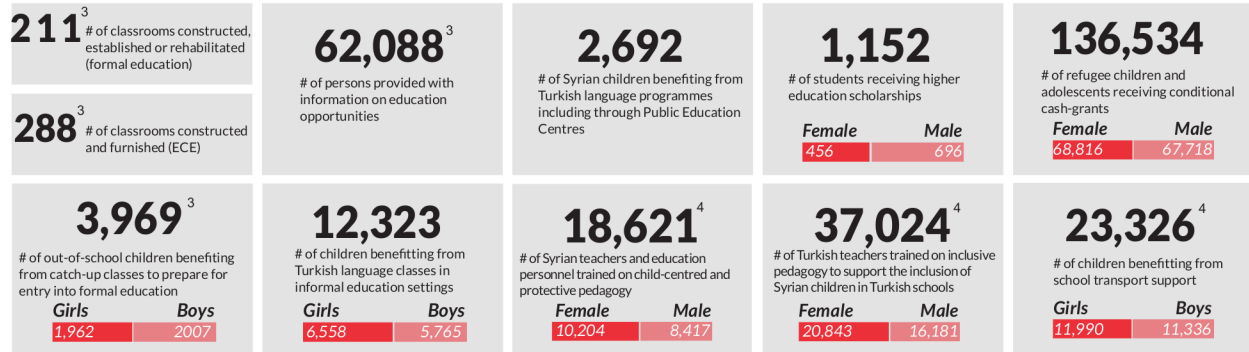
## ENHANCING THE QUALITY OF EDUCATIONAL OPPORTUNITIES (RESULTS ACHIEVED)

|   |      | Reached / Targeted | Female | Male   |
|---|------|--------------------|--------|--------|
| # of Turkish language textbooks provided                    | 71%  | 497,104 / 702,000  |        |        |
| # teachers and education personnel provided with incentives | 101% | 13,181* / 13,000   | 7,098  | 6,083  |
| # of teachers and education personnel trained               | 157% | 55,675* / 35,380   | 31,070 | 24,605 |

\* Target exceeded by mid-year

1. Gender disaggregation was not available during that period. The gender disaggregated data has been calculated using the percentages of the latest (September) enrollment data  
2. Gender disaggregation was not available during that period. The gender disaggregated data has been calculated using the percentages of the latest (September) enrollment data. The enrollment data includes 25,720 children enrolled to formal ECE that is already reported in the previous indicator.

## PROGRESS ACHIEVED IN ACTIVITIES



3. The numbers represent the cumulative data from January to September 2017

4. The data represent the highest achieved as of September 2017