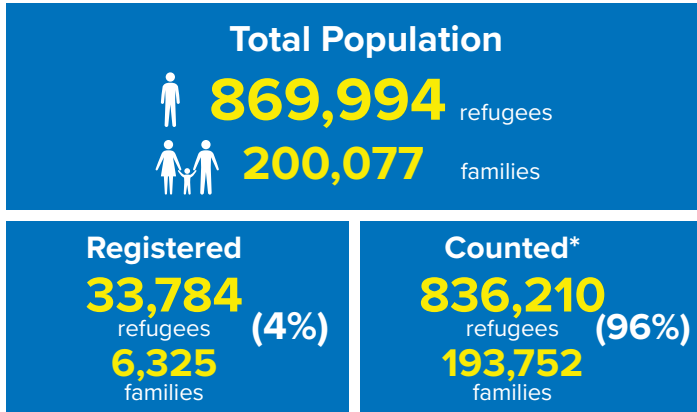
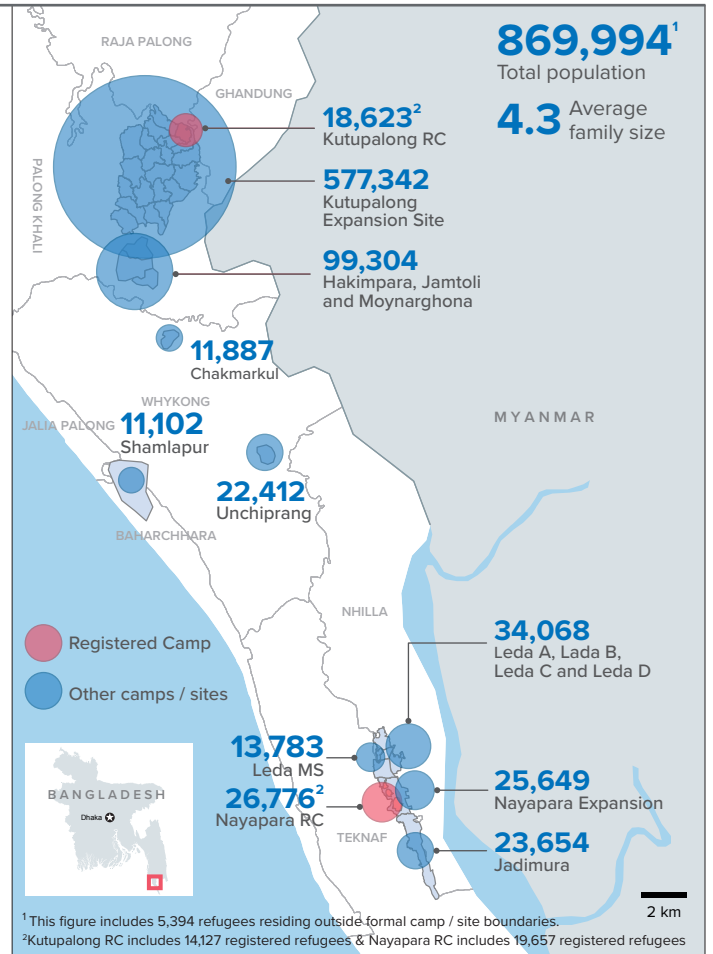
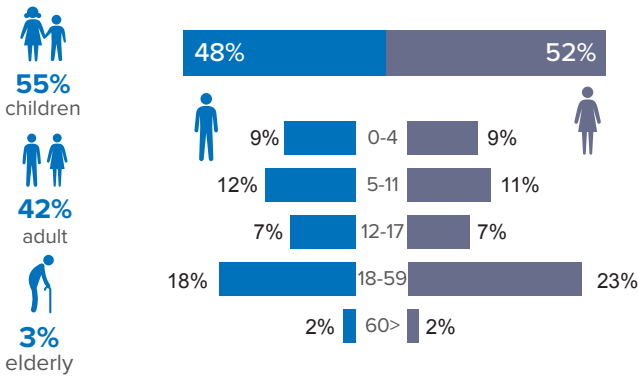


Population Figure



* Some refugees living in host communities and in certain locations beyond the camp boundaries have not been counted

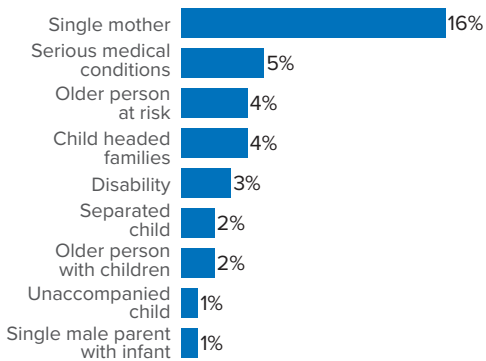
Demography



The boundaries and names shown and the designations used on this map do not imply official endorsement or acceptance by the United Nations.

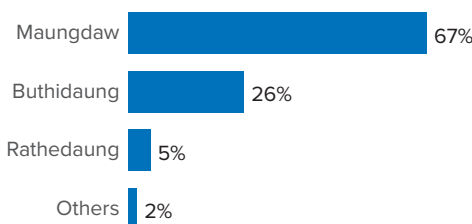
Specific Needs

31% of households have been identified with at least one protection vulnerability*



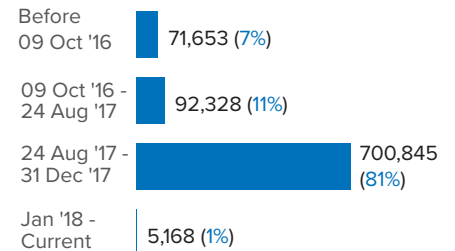
Place of Origin

67% of the Rohingya refugees comes from Maungdaw Township



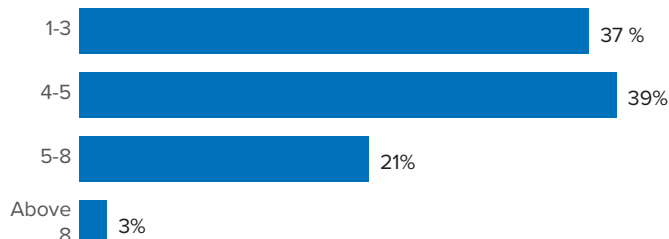
Period of arrival

81% of current population arrived between Aug. and Dec 2017



Family Size Breakdown

39% of the families have a standard family size of 4-5 persons



Linking Exercise

The Linking Exercise, conducted from December 2017 until February 2018, was a collaborative effort between the Government of Bangladesh and the United Nations High Commissioner for Refugees that aimed to merge the family based Rohingya population data collected through the Family Counting Exercise with attributes of the individual Rohingya population data collected by the Ministry of Home Affairs.

The exercise was conducted with a view to creating a unified dataset with individual data grouped into families which will be used to better protect and assist families.

*Figures are the percentage of total families with at least one person with a specific need. More than one specific need may be present within one family.

Age and gender breakdown by camp / site

Camp / Site	Total female new born	Total male new born	Total female infant 1-4	Total male infant 1-4	Total female children 5-11	Total male children 5-11	Total female children 12-17	Total male children 12-17	Total female adult 18-59	Total male adult 18-59	Total female elderly 60+	Total male elderly 60+	Total Families	Total Individuals
Camp 15	898	839	3,293	3,427	5,012	5,204	3,201	3,415	10,781	8,587	837	852	10,458	46,346
Camp 13	703	749	3,039	3,138	4,444	4,707	2,728	2,796	9,587	7,616	735	677	9,587	40,919
Camp 1W	757	756	2,882	2,898	4,336	4,392	2,644	2,743	9,454	7,606	843	738	9,235	40,049
Camp 3	684	736	3,036	3,086	4,182	4,412	2,518	2,685	9,345	7,301	677	587	9,112	39,249
Camp 7	723	731	2,996	3,079	4,218	4,435	2,657	2,612	9,167	7,232	724	662	9,320	39,236
Camp 1E	649	732	2,734	2,903	4,180	4,400	2,609	2,729	9,117	7,638	796	688	8,996	39,175
Camp 9	619	563	2,782	2,803	4,008	4,034	2,489	2,505	8,536	6,939	715	690	8,648	36,683
Camp 10	669	653	2,716	2,860	3,555	3,940	2,244	2,212	8,192	6,410	643	556	8,060	34,650
Camp 8E	528	531	2,425	2,512	3,592	3,707	2,454	2,395	7,866	6,296	593	587	7,730	33,486
Camp 11	584	623	2,473	2,529	3,533	3,759	2,228	2,304	7,623	6,219	562	515	7,483	32,952
Camp 8W	555	533	2,618	2,583	3,467	3,650	2,056	2,175	7,679	6,132	612	547	7,491	32,607
Camp 14	556	579	2,248	2,486	3,319	3,667	2,235	2,231	7,157	5,753	593	520	6,900	31,344
Camp 4	554	585	2,230	2,376	3,322	3,469	1,919	1,918	7,032	5,483	473	374	7,308	29,735
Camp 18	485	519	2,269	2,335	2,965	3,091	1,855	1,748	6,623	5,183	362	382	6,802	27,817
Camp 2E	521	498	2,057	2,109	3,024	3,323	1,698	1,744	6,616	5,024	494	421	6,573	27,529
Nayapara RC*	90	89	1,557	1,638	2,937	3,045	2,204	2,228	7,150	4,968	454	416	5,718	26,776
Camp 5	457	493	2,021	2,100	2,830	2,902	1,584	1,661	6,113	4,755	464	420	6,198	25,800
Nayapara Exp	436	365	1,823	1,904	2,926	3,169	1,961	1,811	6,190	4,294	419	351	5,887	25,649
Camp 6	514	442	1,971	2,090	2,666	2,834	1,429	1,533	5,676	4,499	427	384	5,695	24,465
Camp 2W	400	393	1,754	1,861	2,706	2,973	1,520	1,525	5,612	4,502	481	361	5,458	24,088
Jadimura	392	366	1,866	1,863	2,758	2,983	1,634	1,697	5,504	3,924	346	321	5,255	23,654
Unchiprang	413	387	1,613	1,808	2,573	2,644	1,696	1,688	4,877	4,003	378	332	4,619	22,412
Camp 12	370	359	1,620	1,703	2,371	2,657	1,577	1,535	5,119	3,999	407	352	4,896	22,069
Camp 16	434	394	1,591	1,673	2,332	2,545	1,523	1,442	4,968	4,006	383	323	4,830	21,614
Camp 19	314	302	1,429	1,514	2,049	2,271	1,322	1,358	4,397	3,438	314	274	4,354	18,982
Kutupalong RC*	85	71	1,087	1,268	1,981	2,115	1,468	1,415	4,762	3,794	293	284	3,727	18,623
Leda A	255	259	1,100	1,154	1,566	1,701	1,009	987	3,357	2,489	219	209	3,379	14,305
Leda MS	198	188	839	909	1,761	1,786	925	1,009	3,247	2,573	211	137	3,035	13,783
Chakmarkul	222	210	857	924	1,293	1,357	740	800	2,857	2,322	174	131	2,894	11,887
Shamlapur	183	202	818	853	1,472	1,507	637	656	2,723	1,714	173	164	2,693	11,102
Leda D	143	176	760	733	1,170	1,299	785	722	2,346	1,680	177	109	2,281	10,100
Camp 17	110	132	536	565	827	810	475	458	1,659	1,270	101	97	1,669	7,040
Leda C	104	96	483	533	821	816	421	465	1,624	1,088	116	98	1,617	6,665
No Camp**	85	97	416	449	540	555	397	366	1,272	1,022	108	87	1,257	5,394
Leda B	45	50	210	246	328	311	246	217	735	496	68	46	712	2,998
Camp 20	19	12	60	53	104	94	47	49	198	153	9	13	200	811
Total	14,754	14,710	64,209	66,965	95,168	100,564	59,135	59,834	205,161	160,408	15,381	13,705	200,077	869,994

*Kutupalong RC includes 14,127 registered refugees & Nayapara RC includes 19,657 registered refugees

**This represents refugees residing outside formal camp / site boundaries

Population figures by period of arrival

Arrival Period Camp / Site	Before 09 Oct 2016		09 Oct 2016 - 24 Aug 2017		25 Aug 2017 - 31 Dec 2017		01 Jan 2018 - Current date		Total Families	Total Individuals
	Total Families	Total Individuals	Total Families	Total Individuals	Total Families	Total Individuals	Total Families	Total Individuals		
Camp 15	11	47	717	3,173	9,730	43,126	-	-	10,458	46,346
Camp 13	11	42	791	3,455	8,784	37,418	1	4	9,587	40,919
Camp 1W	19	75	1,025	4,391	8,188	35,577	3	6	9,235	40,049
Camp 3	15	71	955	4,197	8,135	34,954	7	27	9,112	39,249
Camp 7	120	529	1,052	4,541	8,145	34,155	3	11	9,320	39,236
Camp 1E	35	168	1,586	6,816	7,369	32,168	6	23	8,996	39,175
Camp 9	89	349	2,147	8,740	6,410	27,586	2	8	8,648	36,683
Camp 10	10	45	628	2,678	7,415	31,902	7	25	8,060	34,650
Camp 8E	38	156	897	3,936	6,785	29,352	10	42	7,730	33,486
Camp 11	1	3	1,148	5,105	6,334	27,844	-	-	7,483	32,952
Camp 8W	23	106	660	2,888	6,764	29,451	44	162	7,491	32,607
Camp 14	7	25	597	2,774	6,295	28,540	1	5	6,900	31,344
Camp 4	14	61	279	1,150	6,849	27,810	166	714	7,308	29,735
Camp 18	14	60	173	717	6,593	26,959	22	81	6,802	27,817
Camp 2E	3,149	13,373	1,624	6,888	1,800	7,268	-	-	6,573	27,529
Nayapara RC*	3,754	19,860	249	970	1,693	5,896	22	50	5,718	26,776
Camp 5	20	77	552	2,359	5,624	23,355	2	9	6,198	25,800
Nayapara Exp	46	236	493	2,203	5,335	23,165	13	45	5,887	25,649
Camp 6	57	257	1,081	4,872	4,555	19,327	2	9	5,695	24,465
Camp 2W	1,809	8,322	1,353	5,914	2,295	9,848	1	4	5,458	24,088
Jadimura	50	242	491	2,306	4,441	19,924	273	1,182	5,255	23,654
Unchiprang	5	33	211	1,024	4,402	21,352	1	3	4,619	22,412
Camp 12	3	15	237	1,076	4,652	20,958	4	20	4,896	22,069
Camp 16	5	25	282	1,251	4,543	20,338	-	-	4,830	21,614
Camp 19	-	-	373	1,693	3,957	17,180	24	109	4,354	18,982
Kutupalong RC*	2,932	15,460	194	774	601	2,389	-	-	3,727	18,623
Leda A	10	38	330	1,447	3,031	12,790	8	30	3,379	14,305
Leda MS	2,092	10,155	168	652	775	2,976	-	-	3,035	13,783
Chakmarkul	8	36	149	651	2,729	11,171	8	29	2,894	11,887
Shamlapur	260	1,195	287	1,222	2,130	8,616	16	69	2,693	11,102
Leda D	53	270	255	1,133	1,970	8,684	3	13	2,281	10,100
Camp 17	4	17	59	239	1,050	4,358	556	2,426	1,669	7,040
Leda C	59	242	100	402	1,455	6,012	3	9	1,617	6,665
No Camp**	11	54	144	626	1,096	4,687	6	27	1,257	5,394
Leda B	1	9	15	60	693	2,919	3	10	712	2,998
Camp 20	-	-	1	5	195	790	4	16	200	811
Total	14,735	71,653	21,303	92,328	162,818	700,845	1,221	5,168	200,077	869,994

*Kutupalong RC includes 14,127 registered refugees & Nayapara RC includes 19,657 registered refugees

**This represents refugees residing outside formal camp / site boundaries

Population figures by specific needs

Camp / Site	Number of child headed families	Number of families with separated children	Number of families with unaccompanied children	Number of families with a person with disability	Number of families with older person at risk	Number of families with older person at risk with children	Number of families with people with serious medical condition	Number of single male parents with infants	Number of single female parent	Number of families with people with specific needs
Camp 15	252	219	56	319	523	188	409	60	1,538	2,984
Camp 1E	285	169	41	549	452	326	481	55	1,085	2,846
Nayapara RC	135	173	41	604	170	51	1,202	33	1,199	2,836
Camp 7	170	220	28	362	375	248	471	113	1,221	2,789
Camp 13	312	251	79	310	395	208	344	64	1,430	2,761
Camp 1W	123	162	32	392	440	213	448	65	1,236	2,714
Camp 3	242	197	62	372	346	292	330	65	1,429	2,657
Camp 10	325	137	86	428	374	270	552	102	1,127	2,619
Camp 9	388	152	75	387	393	265	497	100	1,062	2,544
Camp 8E	373	171	78	374	397	261	442	91	1,135	2,500
Camp 4	239	212	87	152	236	175	221	102	1,327	2,428
Camp 18	208	157	62	251	226	173	313	85	1,180	2,166
Camp 11	235	176	64	294	314	166	251	72	1,139	2,087
Camp 5	214	164	73	212	291	173	212	64	1,117	2,010
Camp 2E	202	150	47	250	236	188	304	46	1,062	2,006
Nayapara Exp	122	103	39	183	228	67	142	48	1,298	1,965
Camp 14	166	121	47	189	322	137	309	42	970	1,870
Camp 6	158	161	44	222	240	126	321	40	798	1,791
Jadimura	89	82	18	160	155	58	102	40	1,148	1,758
Camp 8W	236	87	37	249	265	160	298	80	722	1,690
Camp 2W	91	101	16	271	226	110	254	55	704	1,592
Kutupalong RC	68	60	14	350	103	37	769	9	560	1,569
Camp 12	108	81	34	144	202	104	139	34	785	1,356
Camp 16	108	92	22	171	202	82	162	37	710	1,322
Camp 19	133	117	30	181	208	80	115	44	688	1,311
Leda A	113	82	37	113	124	66	135	19	708	1,188
Unchiprang	95	70	19	160	156	77	153	16	581	1,118
Shamlapur	58	50	12	75	99	43	70	11	756	1,028
Leda MS	74	52	28	129	100	31	80	17	483	845
Chakmarkul	80	58	22	106	85	32	104	32	449	828
Leda D	74	42	25	72	78	37	86	18	529	795
Leda C	62	50	9	69	74	26	60	10	438	665
Camp 17	22	18	8	18	36	18	25	3	136	523
No Camp	48	32	11	49	97	16	62	5	187	410
Leda B	14	9	6	20	34	13	14	3	191	262
Camp 20	5	5	3	5	4	2	4		21	41
Total	5,627	4,183	1,392	8,192	8,206	4,519	9,881	1,680	31,149	61,874

Population density by camps in KTP

Using GIS technology, polygons of the camps were established. The GPS coordinates of each family were then mapped into the polygons, in order to determine the total number of families and individuals within each camp.

Based on the high quality drone imagery and field mapping conducted by Site Planning unit, the total usable area and non-usable area was calculated jointly with IOM. While the usable area refers to areas populated by refugees, the non-usable areas refers to flood and landslide prone areas.

Note: The recommended minimum surface area is 45 m² per person when planning a refugee camp (including kitchen / vegetable gardening space). However the actual surface area per person (excluding garden space) should not be less than 30 m² per person.

Camp	Total Families	Total Individuals	Useable area (sqm)	% useable area	Unuseable area (sqm)	Average usable area per person (sqm)
Camp 6	5695	24465	15549.132	4.3%	346464.545	0.636
Camp 7	9320	39236	187746.251	26.3%	526339.249	4.785
Camp 18	6802	27817	215867.551	28.7%	535809.108	7.760
Camp 10	8060	34650	275403.520	55.5%	220741.926	7.948
Camp 8W	7491	32607	261919.443	33.9%	510261.655	8.033
Camp 2E	6573	27529	231810.435	59.5%	157511.492	8.421
Camp 11	7483	32952	291155.076	62.5%	174864.364	8.836
Camp 3	9112	39249	370579.305	80.6%	89175.009	9.442
Camp 9	8648	36683	364589.856	56.2%	284492.949	9.939
Camp 2W	5458	24088	251214.118	63.0%	147230.927	10.429
Camp 1W	9235	40049	453408.960	84.8%	80984.993	11.321
Camp 4	7308	29735	358275.425	31.9%	765423.698	12.049
Camp 5	6198	25800	312596.386	50.8%	302700.815	12.116
Camp 8E	7730	33486	433694.962	45.3%	522855.700	12.952
Camp 13	9587	40919	566311.361	75.9%	180248.889	13.840
Camp 17	1669	7040	105265.735	12.0%	773225.497	14.953
Camp 1E	8996	39175	608228.119	96.0%	25354.869	15.526
Camp 19	4354	18982	340459.649	47.7%	373588.119	17.936
Kutupalong RC*	3727	18623	340824.720	89.4%	40514.956	18.301
Camp 12	4896	22069	487402.758	77.2%	143735.693	22.085
Camp 20	200	811	230466.416	46.2%	268065.658	284.176

*Kutupalong RC includes 14,127 registered refugees