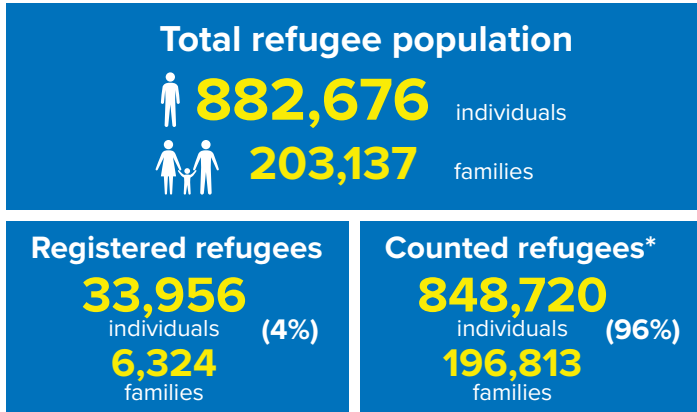
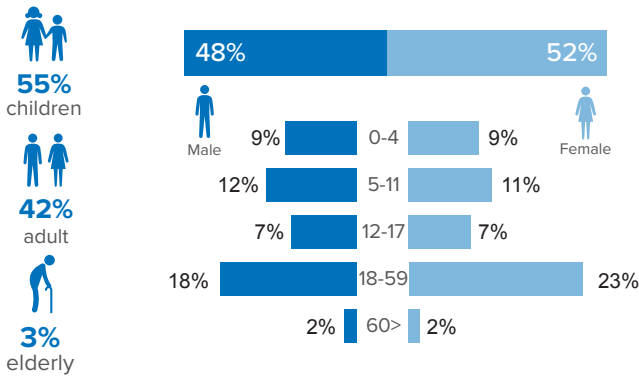


Refugee population figure

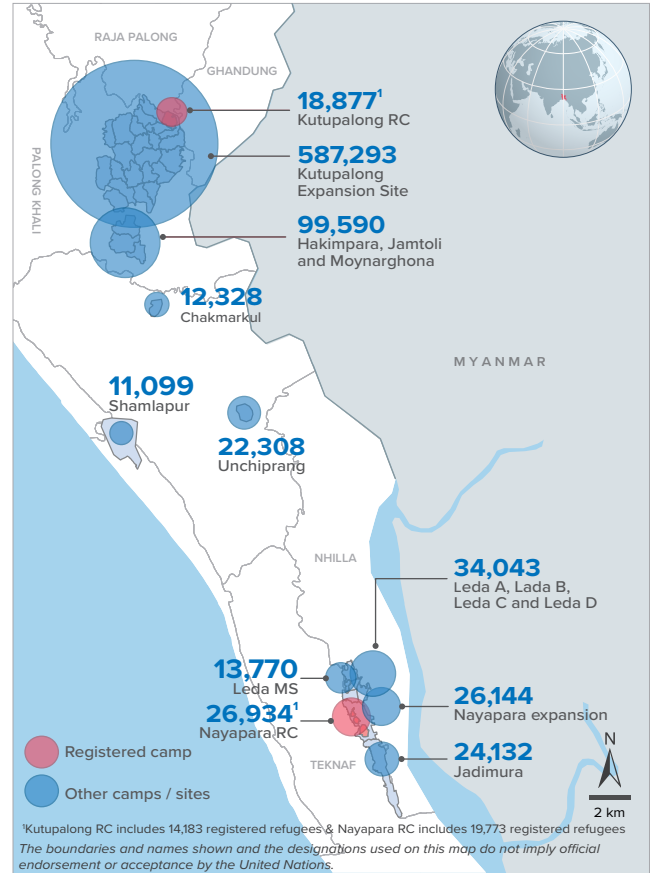


* Some refugees living in host communities and in certain locations beyond the camp boundaries may not have been counted.

Demography

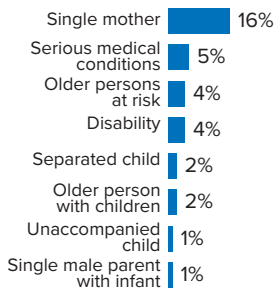


Refugee population density



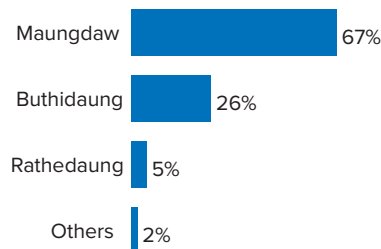
Specific needs

31% of the families have been identified with at least one protection vulnerability*



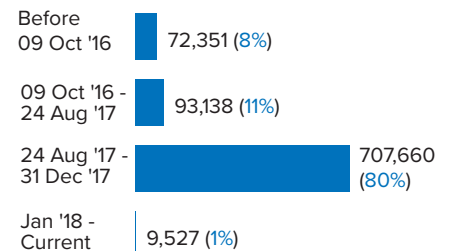
Place of origin

67% of the Rohingya refugees comes from Maungdaw Township



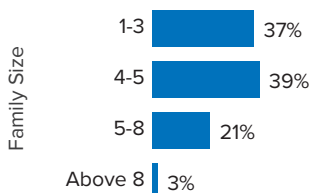
Period of arrival

80% of current population arrived between Aug. and Dec 2017



Family size breakdown

39% of the families have a standard family size of 4-5 persons



Linking exercise

The Linking Exercise, conducted from December 2017 until February 2018, was a collaborative effort between the Government of Bangladesh and the United Nations High Commissioner for Refugees that aimed to merge the family based Rohingya population data collected through the Family Counting Exercise with attributes of the individual Rohingya population data collected by the Ministry of Home Affairs.

The exercise was conducted with a view to creating a unified dataset with individual data grouped into families which will be used to better protect and assist families.

*Figures are the percentage of total families with at least one person with a specific need. More than one specific need may be present within one family.

Age and gender breakdown by camp/site

Camp/Site	Infant female below 1	Infant male below 1	1-4 Children female	1-4 Children male	5-11 Children female	5-11 Children male	12-17 Children female	12-17 Children male	18-59 Adult female	18-59 Adult male	60+ Elderly female	60+ Elderly male	Total Families	Total Individuals
Camp 15	899	842	3,312	3,450	5,040	5,225	3,213	3,423	10,835	8,621	842	854	10,508	46,556
Camp 13	703	748	3,038	3,137	4,444	4,704	2,728	2,796	9,586	7,615	735	677	9,586	40,911
Camp 1W	762	762	2,932	2,951	4,408	4,454	2,684	2,776	9,603	7,725	850	747	9,379	40,654
Camp 1E	659	737	2,786	2,948	4,254	4,473	2,647	2,776	9,281	7,753	806	695	9,166	39,815
Camp 3	683	731	3,020	3,084	4,168	4,403	2,514	2,678	9,332	7,289	677	586	9,098	39,165
Camp 7	710	716	2,984	3,082	4,188	4,409	2,633	2,575	9,092	7,151	717	648	9,236	38,905
Camp 9	618	563	2,778	2,800	4,000	4,032	2,489	2,503	8,529	6,932	715	691	8,642	36,650
Camp 10	666	648	2,699	2,843	3,534	3,917	2,233	2,199	8,131	6,367	639	553	8,003	34,429
Camp 8E	526	530	2,410	2,500	3,575	3,688	2,446	2,385	7,828	6,271	590	584	7,695	33,333
Camp 11	584	623	2,472	2,529	3,533	3,757	2,228	2,304	7,622	6,218	562	515	7,482	32,947
Camp 8W	560	535	2,645	2,588	3,478	3,670	2,065	2,176	7,723	6,163	612	546	7,534	32,761
Camp 14	556	579	2,253	2,491	3,332	3,687	2,242	2,236	7,172	5,762	594	520	6,916	31,424
Camp 4	557	592	2,278	2,430	3,388	3,538	1,959	1,943	7,166	5,591	486	385	7,452	30,313
Camp 2E	532	506	2,150	2,212	3,141	3,431	1,736	1,786	6,857	5,161	505	433	6,823	28,450
Camp 18	486	520	2,271	2,339	2,970	3,088	1,854	1,748	6,626	5,185	363	382	6,807	27,832
Nayapara RC*	90	90	1,579	1,644	2,936	3,063	2,235	2,265	7,169	4,995	453	415	5,728	26,934
Nayapara Exp	451	368	1,885	1,948	3,000	3,240	1,973	1,827	6,321	4,352	427	352	6,007	26,144
Camp 5	456	495	2,019	2,102	2,833	2,894	1,579	1,659	6,113	4,756	466	422	6,199	25,794
Camp 2W	407	404	1,818	1,942	2,791	3,064	1,550	1,554	5,797	4,619	486	368	5,646	24,800
Camp 6	517	445	2,001	2,113	2,698	2,862	1,449	1,549	5,731	4,533	428	386	5,754	24,712
Jadimura	395	372	1,913	1,919	2,832	3,030	1,658	1,714	5,635	3,990	348	326	5,368	24,132
Unchiprang	411	384	1,604	1,795	2,560	2,630	1,690	1,685	4,858	3,982	377	332	4,595	22,308
Camp 12	370	358	1,619	1,703	2,371	2,656	1,577	1,535	5,118	3,998	407	352	4,895	22,064
Camp 16	434	394	1,590	1,675	2,333	2,543	1,523	1,440	4,967	4,005	383	323	4,829	21,610
Camp 19	317	303	1,441	1,525	2,058	2,284	1,327	1,364	4,426	3,461	317	276	4,383	19,099
Kutupalong RC*	89	75	1,104	1,259	2,000	2,147	1,510	1,454	4,816	3,842	297	284	3,778	18,877
Leda A	255	259	1,098	1,153	1,566	1,700	1,008	987	3,354	2,487	219	208	3,376	14,294
Leda MS	198	188	838	907	1,757	1,785	925	1,008	3,245	2,572	210	137	3,032	13,770
Camp 17	201	242	1,125	1,132	1,478	1,553	849	837	3,176	2,414	197	196	3,157	13,400
Chakmarkul	227	216	904	966	1,343	1,421	764	817	2,968	2,386	181	135	3,014	12,328
Shamlapur	183	202	817	853	1,471	1,507	637	656	2,722	1,714	173	164	2,692	11,099
Leda D	143	176	760	732	1,170	1,299	785	722	2,343	1,679	177	109	2,280	10,095
Leda C	103	96	481	532	821	816	421	464	1,622	1,086	116	98	1,615	6,656
No Camp**	95	109	480	513	646	657	436	408	1,459	1,147	115	93	1,435	6,158
Leda B	45	50	210	246	328	311	246	217	735	496	68	46	712	2,998
Camp 20	23	16	93	84	159	139	57	66	292	217	13	16	296	1,175
Camp 20 Extension	3	4	8	9	8	6	3	4	21	18	-	-	19	84
Total	14,914	14,878	65,415	68,136	96,612	102,083	59,873	60,536	208,271	162,553	15,551	13,854	203,137	882,676

*Kutupalong RC includes 14,183 registered refugees & Nayapara RC includes 19,773 registered refugees

**This represents refugees residing outside formal camp / site boundaries

Population figures by period of arrival

Arrival Period	Before 09 Oct 2016		09 Oct 2016 - 24 Aug 2017		25 Aug 2017 - 31 Dec 2017		01 Jan 2018 - Current date		Total Families	Total Individuals
Camp / Site	Total Families	Total Individuals	Total Families	Total Individuals	Total Families	Total Individuals	Total Families	Total Individuals		
Camp 15	11	47	724	3,205	9,772	43,296	1	8	10,508	46,556
Camp 13	11	42	791	3,455	8,783	37,410	1	4	9,586	40,911
Camp 1W	19	75	1,042	4,465	8,299	36,050	19	64	9,379	40,654
Camp 1E	35	168	1,614	6,926	7,499	32,655	18	66	9,166	39,815
Camp 3	16	76	950	4,178	8,120	34,858	12	53	9,098	39,165
Camp 7	120	530	1,062	4,594	8,025	33,653	29	128	9,236	38,905
Camp 9	89	349	2,139	8,705	6,412	27,588	2	8	8,642	36,650
Camp 10	10	45	625	2,670	7,361	31,689	7	25	8,003	34,429
Camp 8E	38	156	896	3,934	6,748	29,194	13	49	7,695	33,333
Camp 11	1	3	1,147	5,100	6,334	27,844	-	-	7,482	32,947
Camp 8W	23	106	657	2,869	6,801	29,591	53	195	7,534	32,761
Camp 14	7	25	597	2,774	6,306	28,596	6	29	6,916	31,424
Camp 4	17	81	289	1,188	6,957	28,256	189	788	7,452	30,313
Camp 2E	3,225	13,637	1,668	7,052	1,924	7,739	6	22	6,823	28,450
Camp 18	14	60	173	717	6,598	26,974	22	81	6,807	27,832
Nayapara RC*	3,754	19,976	249	970	1,692	5,891	33	97	5,728	26,934
Nayapara Exp	46	236	503	2,244	5,365	23,274	93	390	6,007	26,144
Camp 5	21	82	553	2,362	5,619	23,328	6	22	6,199	25,794
Camp 2W	1,824	8,371	1,378	6,004	2,413	10,312	31	113	5,646	24,800
Camp 6	57	257	1,081	4,872	4,607	19,553	9	30	5,754	24,712
Jadimura	50	242	495	2,318	4,466	20,020	357	1,552	5,368	24,132
Unchiprang	5	33	206	1,001	4,383	21,271	1	3	4,595	22,308
Camp 12	3	15	237	1,076	4,651	20,953	4	20	4,895	22,064
Camp 16	5	25	282	1,251	4,542	20,334	-	-	4,829	21,610
Camp 19	-	-	376	1,701	3,980	17,277	27	121	4,383	19,099
Kutupalong RC*	2,931	15,516	196	781	641	2,552	10	28	3,778	18,877
Leda A	10	38	330	1,447	3,028	12,779	8	30	3,376	14,294
Leda MS	2,092	10,155	168	652	772	2,963	-	-	3,032	13,770
Camp 17	12	54	113	449	1,998	8,370	1,034	4,527	3,157	13,400
Chakmarkul	12	53	153	669	2,769	11,306	80	300	3,014	12,328
Shamlapur	260	1,195	287	1,222	2,129	8,613	16	69	2,692	11,099
Leda D	53	270	255	1,133	1,969	8,679	3	13	2,280	10,095
Leda C	59	242	100	402	1,453	6,003	3	9	1,615	6,656
No Camp**	14	67	154	665	1,183	5,039	84	387	1,435	6,158
Leda B	1	9	15	60	693	2,919	3	10	712	2,998
Camp 20	20	83	7	26	202	818	67	248	296	1,175
Camp 20 Extension	7	32	1	1	3	13	8	38	19	84
Grand Total	14,872	72,351	21,513	93,138	164,497	707,660	2,255	9,527	203,137	882,676

*Kutupalong RC includes 14,183 registered refugees & Nayapara RC includes 19,773 registered refugees

**This represents refugees residing outside formal camp / site boundaries

Population figures by specific needs

Camp/Site	Families with separated children	Families with unaccompanied children	Families with a person with disability	Families with older person at risk	Families with older person at risk with children	Families with people with serious medical condition	Single male parents with infants	Single female parent	Families with people with specific needs
Camp 15	220	56	319	525	188	409	60	1,552	2,999
Camp 1E	171	43	558	457	327	488	57	1,144	2,913
Nayapara RC	174	41	603	170	51	1,201	34	1,203	2,838
Camp 7	224	29	357	364	245	463	106	1,250	2,766
Camp 13	251	79	310	395	208	344	64	1,430	2,761
Camp 1W	163	33	396	444	215	452	66	1,262	2,751
Camp 3	197	61	373	349	293	330	65	1,429	2,660
Camp 10	134	84	424	372	269	549	102	1,117	2,599
Camp 9	151	75	387	396	267	496	100	1,068	2,544
Camp 8E	171	78	373	397	258	440	91	1,128	2,486
Camp 4	239	90	185	292	196	272	101	1,431	2,462
Camp 18	157	62	251	227	173	313	85	1,184	2,170
Camp 2E	154	50	257	242	191	310	49	1,145	2,117
Camp 11	176	64	294	314	166	251	72	1,139	2,087
Nayapara Exp	104	39	187	230	67	145	49	1,353	2,025
Camp 5	166	73	212	295	173	211	64	1,123	2,007
Camp 14	121	47	189	323	137	309	42	980	1,879
Camp 6	166	44	226	242	128	322	40	815	1,819
Jadimura	96	21	169	166	63	111	50	1,264	1,796
Camp 8W	90	38	250	269	159	295	80	743	1,691
Camp 2W	106	17	282	233	112	262	59	768	1,654
Kutupalong RC	61	16	350	107	39	771	10	576	1,594
Camp 12	81	34	144	202	104	139	34	785	1,356
Camp 16	92	22	171	202	82	162	37	710	1,322
Camp 19	117	30	181	211	80	115	44	694	1,320
Leda A	82	37	113	124	66	134	19	707	1,187
Unchiprang	70	17	159	156	77	153	16	580	1,114
Shamlapur	50	12	75	99	43	70	11	755	1,027
Camp 17	95	19	111	129	65	101	32	579	1,004
Chakmarkul	65	24	112	95	33	109	34	509	894
Leda MS	51	28	129	100	31	80	17	482	843
Leda D	42	25	72	78	37	86	18	529	795
Leda C	50	9	69	74	26	60	10	438	665
No Camp	40	11	55	102	19	68	5	238	474
Leda B	9	6	20	34	13	14	3	191	262
Camp 20	6	3	8	8	4	7		50	81
Camp 20 Extension	-	-	-	-	-	-	-	4	4
Total	4,342	1,417	8,371	8,423	4,605	10,042	1,726	32,355	62,966

Population density by camps in KTP

Using GIS technology, polygons of the camps were established. The GPS coordinates of each family were then mapped into the polygons, in order to determine the total number of families and individuals within each camp.

Based on the high quality drone imagery and field mapping conducted by Site Planning unit, the total usable area and non-usable area was calculated jointly by UNHCR with IOM. While the usable area refers to areas populated by refugees, the non-usable areas refers to flood and landslide prone areas.

Note: The recommended minimum surface area is 45 m² per person when planning a refugee camp (including kitchen / vegetable gardening space). However the actual surface area per person (excluding garden space) should not be less than 30 m² per person.

Camp	Total Families	Total Individuals	Useable area (sqm)	% useable area	Unuseable area (sqm)	Average usable area per person (sqm)
Camp 6	5,754	24,712	15,549.13	4%	346,464.545	0.63
Camp 7	9,236	38,905	187,746.25	26%	526,339.249	4.83
Camp 18	6,807	27,832	215,867.55	29%	535,809.108	7.76
Camp 17	3,157	13,400	105,265.74	12%	773,225.497	7.86
Camp 8W	7,534	32,761	261,919.44	34%	510,261.655	7.99
Camp 10	8,003	34,429	275,403.52	56%	220,741.926	8.00
Camp 2E	6,823	28,450	231,810.44	60%	157,511.492	8.15
Camp 11	7,482	32,947	291,155.08	62%	174,864.364	8.84
Camp 3	9,098	39,165	370,579.30	81%	89,175.009	9.46
Camp 9	8,642	36,650	364,589.86	56%	284,492.949	9.95
Camp 2W	5,646	24,800	251,214.12	63%	147,230.927	10.13
Camp 1W	9,379	40,654	453,408.96	85%	80,984.993	11.15
Camp 4	7,452	30,313	358,275.42	32%	765,423.698	11.82
Camp 5	6,199	25,794	312,596.39	51%	302,700.815	12.12
Camp 8E	7,695	33,333	433,694.96	45%	522,855.700	13.01
Camp 13	9,586	40,911	566,311.36	76%	180,248.889	13.84
Camp 1E	9,166	39,815	608,228.12	96%	25,354.869	15.28
Camp 19	4,383	19,099	340,459.65	48%	373,588.119	17.83
Kutupalong RC*	3,778	18,877	340,824.72	89%	40,514.956	18.06
Camp 12	4,895	22,064	487,402.76	77%	143,735.693	22.09
Camp 20	296	1,175	230,466.42	46%	268,065.658	196.14

*Kutupalong RC includes 14,183 registered refugees