

# Working Group on Energy & Environment for Refugee and Host Population Empowerment

## WorkGrEEEn for ReHoPE

Comprehensive Refugee Response Framework

Inter-agency and Inter-sector  
Energy & Environment Joint Response Plan  
March 6, 2018

# Bidi Bidi – August 2016 vs. December 2017



# Presentation Outline

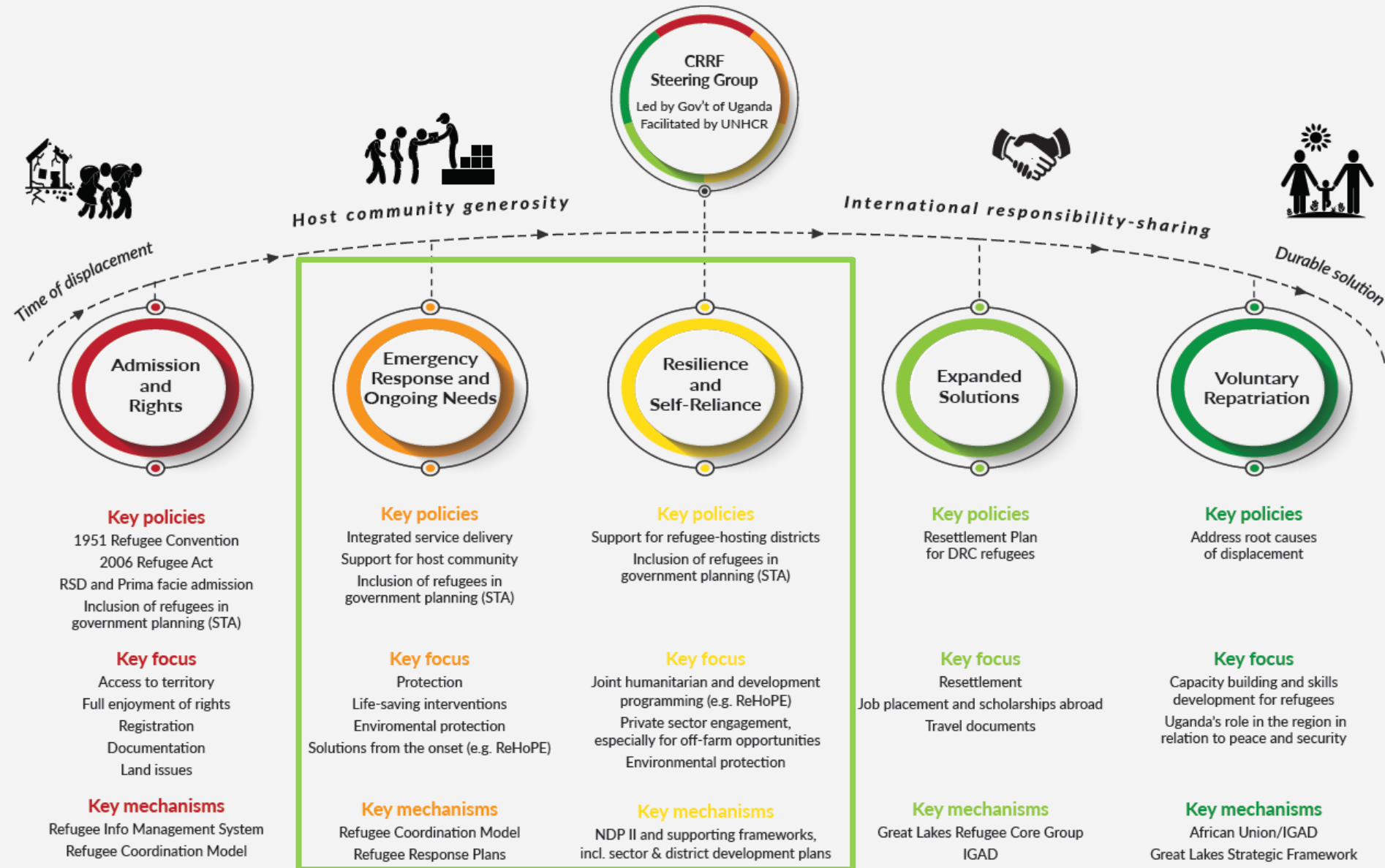


Purpose: To present the framework for the inter-sector and inter-agency Energy & Environment Response Plan for Refugee Settlements and Host Communities

## Overview:

- CRRF and WorkGrEEEn
- Strategic Context
- ReHoPE – Environmental Objective
- E&E Response Plan - Results
- E&E Response Plan Overview
- Validation and Way Forward

# Comprehensive Refugee Response Framework in Uganda

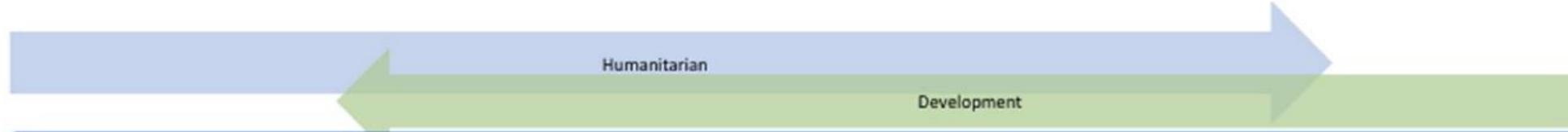


*Cross cutting issues: Gender Equality | Women's Empowerment | Non Discrimination | Accountability to Affected Populations*

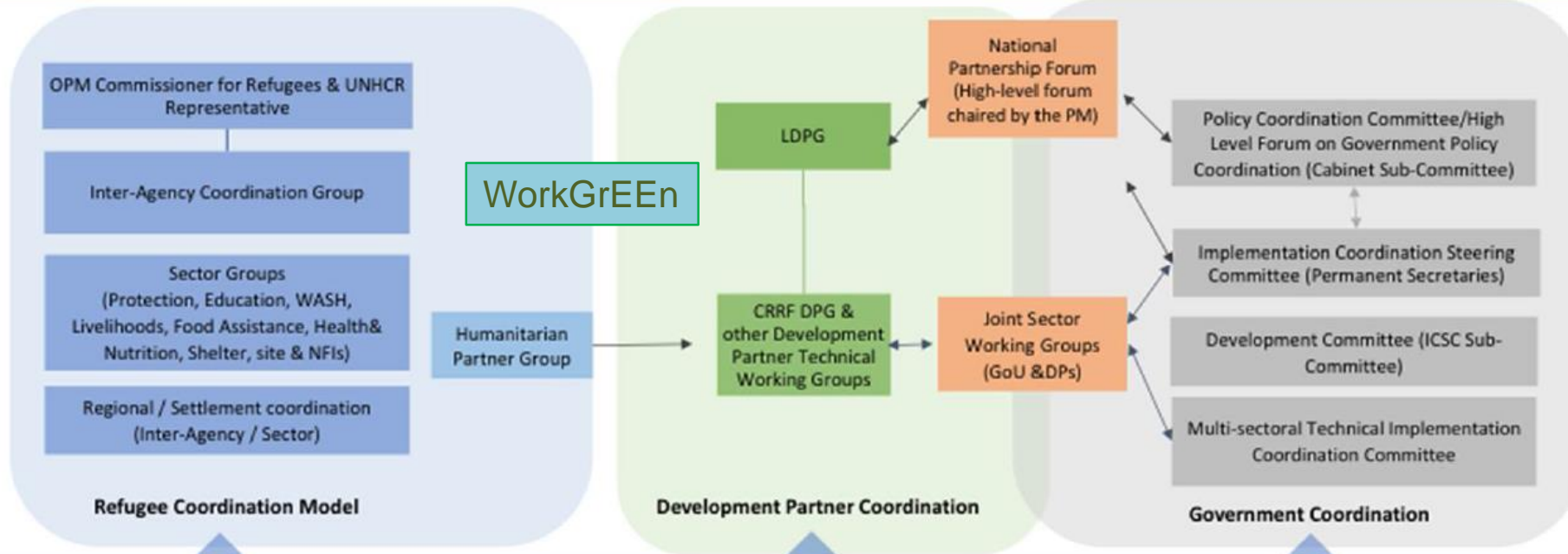


**UNHCR**

United Nations High Commissioner for Refugees  
Haut Commissariat des Nations Unies pour les réfugiés



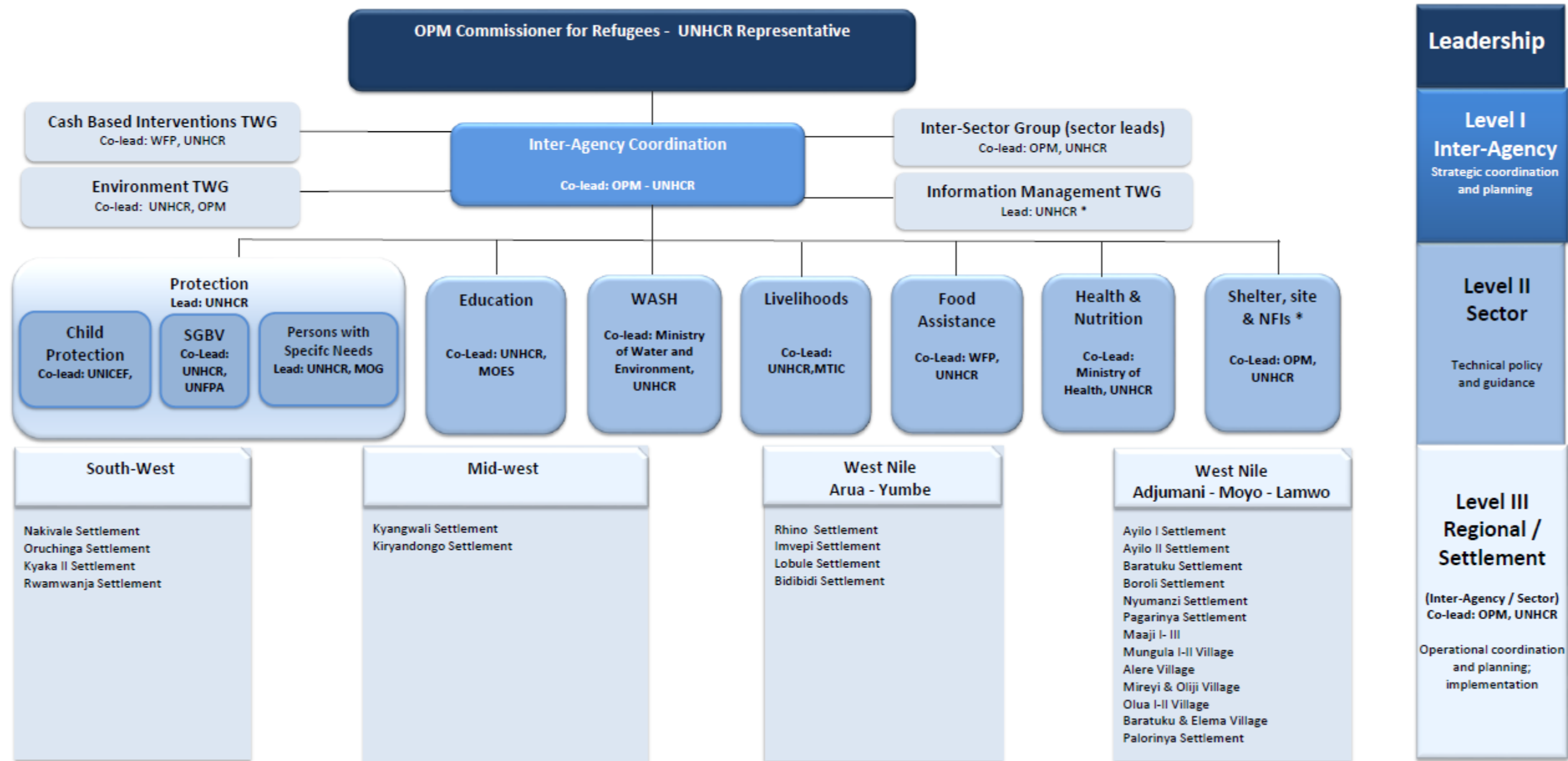
**Whole-Of-Government**



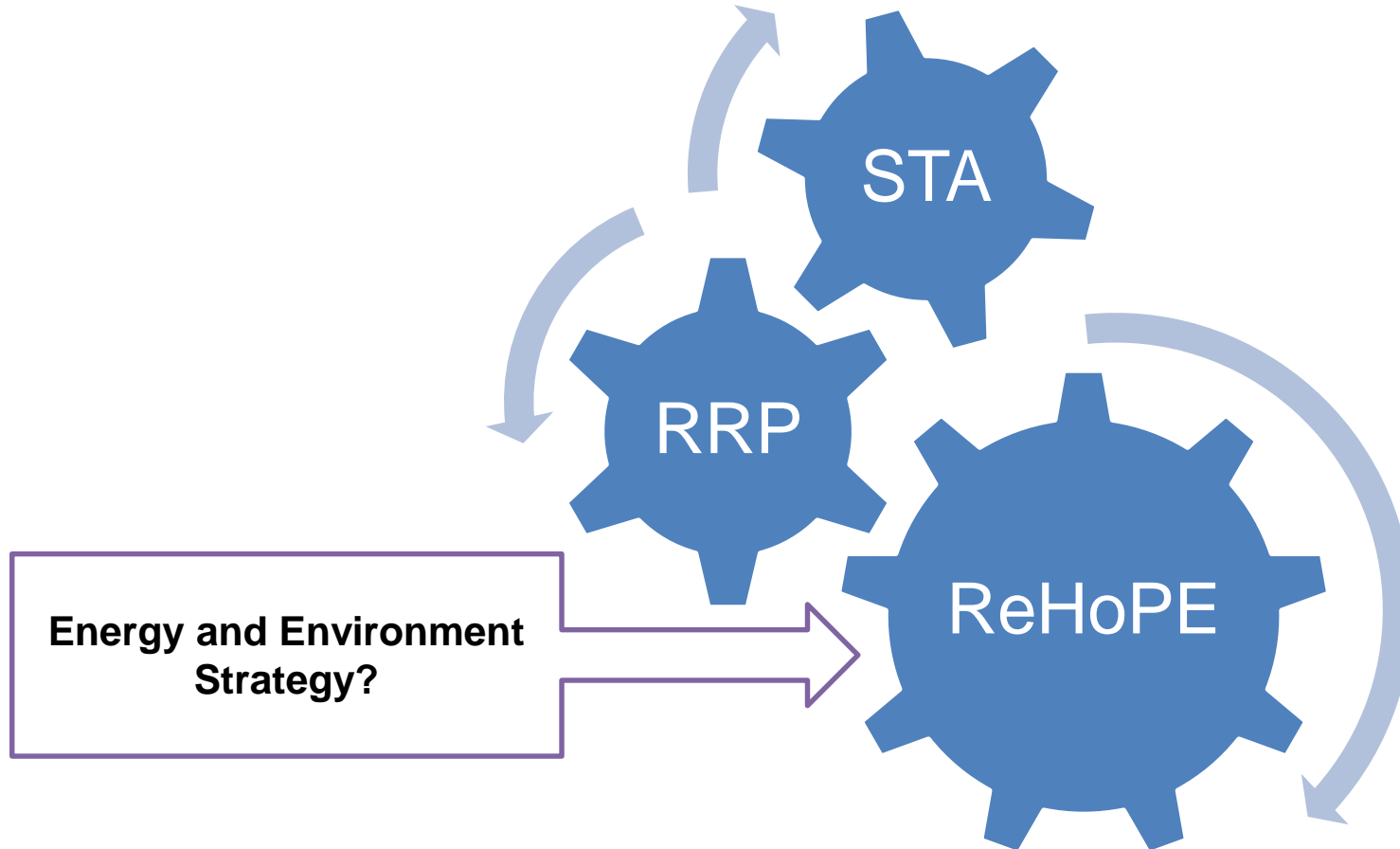
**Steering Group for Comprehensive Refugee Response (OPM) supported by the Secretariat or Comprehensive Refugee Response**

**Whole-Of-Society**

# UGANDA: Refugee Response Coordination Structure



# Strategic Context: CRRF



# Working Group on Energy and Environment (WorkGrEEEn) Mandate



- The mandate for the WorkGrEEEn is well-anchored in existing strategies:
  - STA Pillars 1, 2, 4 & 5: *Land Management, Sustainable Livelihoods, Environmental Protection, Community Infrastructure*
  - RRP Strategic Priority #6, Objective #3: *Improve environmental conditions in areas of displacement*
  - ReHoPE Strategic Objective #4: *Environmental Degradation in Refugee Hosting Areas Addressed*

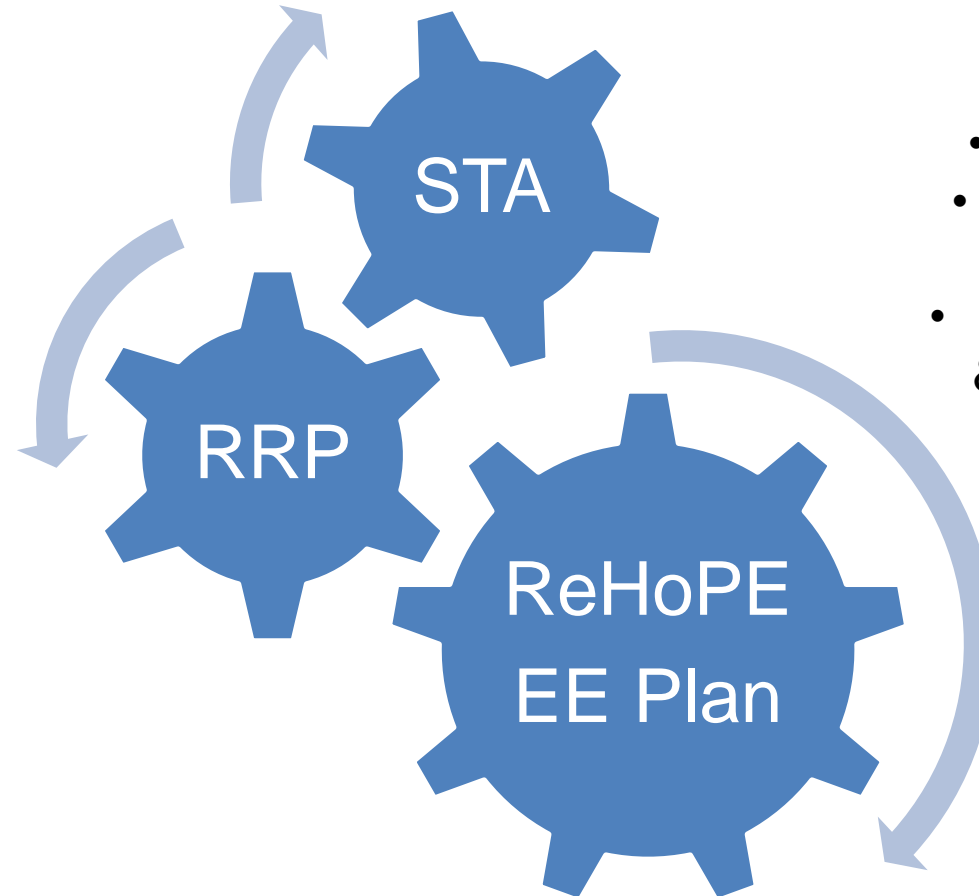


# Strategy to Action

The WorkGrEEEn will take the lead on Objective #4 of the ReHoPE Strategy based on a detailed Response Plan that includes:

- Results
- Strategies
- Outputs
- Indicators
- Actions
- Milestones
- Responsibilities
- Budget

The WorkGrEEEn will validate and enhance the results and indicators in the next revision of the ReHoPE strategy



PROS:

- Operationalize ReHoPE
- Streamline execution and reporting
- Framework for inter-agency & inter-sector coordination

# ReHoPE Objective #4

ReHoPE Objectives	Results	Intermediate results	Outcome Indicators
Environmental degradation in refugee hosting areas addressed	Improved access to and use of energy saving technologies	-Increased number of energy saving technology development and training centres established	Households using energy saving technologies by type (Number)
		-Increased number of women and youth are being trained in the development, use and maintenance of energy saving technologies	Population trained in the use and maintenance of energy saving technologies % by gender by type (biogas, stoves)
			Population engaged in energy saving technologies as their IGA (% by gender by type)
	Improved environmental management	-Increased level (in number and intensity) of sensitisation/awareness creation campaigns and training of communities, including school children on the importance and sound measures, including provision of incentives for protection of environment	Population engaged in tree planting for own use or as their IGA (% by gender)
		Population with awareness of at least two good environmental management practices (% by gender)	

# What Does Success Look Like? Proposed Results



- ✓ Environment, wetlands, rivers, aquifers, forests and natural resources are proactively and effectively managed (STA Pillar Environmental Protection)
  - Infrastructure and environmental services are delivered sustainably and land-use is effectively managed (STA Pillars Land Management and Community Infrastructure)
  - Settlements and host communities are self-reliant and resilient (STA Pillar Sustainable Livelihood)
  - ✓ Safe access to sustainable energy improved and degradation & deforestation mitigated (STA Pillar Community Infrastructure)
  - Accessible, integrated and current environmental data is monitored and evaluated
- ✓ ReHoPE Result

<b>Vision</b>	Sound management and sustainable use of Energy & Environment resources for the protection and empowerment of refugee and host communities in Uganda.																										
<b>Mission</b>	The WorkGrEEen for ReHoPE will harmonize humanitarian and development responses fostering resilience and cross-cutting sustainable solutions to mitigate environmental impacts in refugee hosting areas in line with NDPII, SDPs, STA and the Uganda RRP.																										
<b>Values</b>	Risk Management		Systems-thinking		Sustainable Development, Participation	Protection	Accountability																				
<b>E&amp;E Pillars</b>	<b>Environmental Management</b>		<b>Planning and Infrastructure</b>		<b>Livelihood and Resilience</b>	<b>Sustainable Energy</b>	<b>Knowledge Management</b>																				
<b>Results</b>	Environment and natural resources are effectively managed		Infrastructure services are delivered sustainably		Settlements and host communities are self-reliant and resilient	Safe access to sustainable energy improved and degradation mitigated	Accessible and current environmental data is monitored and evaluated																				
<b>STA Pillars</b>	Environmental Protection Governance and Rule of Law		Community Infrastructure Land Management		Sustainable Livelihood Peaceful Coexistence	Community Infrastructure Peaceful Coexistence	n/a																				
<b>Strategies</b>	Apply sound environmental management practices		Adopt integrated, participatory, cross-sector planning, O&M approaches		Expand livelihood and reduce vulnerability to environment hazards and resource-related conflicts	Implement SAFE, REDD+, nBEST, and Renewable Energy Strategies	Share information between agencies and use common indicators																				
<b>Outputs</b>	- Settlement ESMPs implemented	- Capacity on ENR at District Level strengthened	- Capacity for environmental mitigation strengthened among actors	- Environmental criteria in procurement and agreements applied	- Source water protection integrated with WASH	- Environmentally sound technical standards and guidelines published	- Environmental mitigation measures applied in sectors	- Master planning approach applied	- access to services,	- land use management,	- fecal sludge management	- waste management,	- energy from waste,	- water for production etc.	- Settlements and host communities are self-reliant and resilient	- Resource rights strengthened	- Access to sound and locally appropriate technology improved	- Revolving credit funds, innovation challenge funds, small grants mobilized from the	- Energy action plan for lighting, cooking, heating and power needs at households and institutions implemented	- Cookstoves standardized	- Renewables and energy from waste promoted	- Energy conservation, supply and recovery measures included in new and retrofit facilities	- M&E indicators harmonized and integrated in programming and projects	- Studies and reports published on online information portal	- Geo-spatial data sharing on common platform and standards established	- Groundwater levels, land-use/forest mapping monitored	- Forum for coordination of research partners established

# Way Forward



Next WorkGrEEEn meeting: week of April 10, 2018

Develop 2018 Response Plan and Logframe

- Draft Harmonized Indicators and Targets
- Draft Actions, Milestones, Roles & Responsibilities, Risks, and Budget
- Stocktaking: who is doing what where?

Finalize data model and roll out monitoring and evaluation tools

# Environment and Energy - Shelters

- Environmental Considerations in Shelters
  - Sustainable source of construction materials especially poles and bricks (that require water and energy)
  - Sustainable energy source for households, reception centres, and institutions
  - Avoidance/prevention of indoor air pollution from cooking
    - Adequate ventilation, proper kitchen facilities



# Site Planning – Environment and Energy

- Key Environmental Considerations in Site Planning
  - Environmental Impact Assessments and Management Plans – protected areas and zoning for better natural resource management – wetlands, woodlots, nurseries, agricultural, water source protection, etc.
  - Planning should be conducive to access to sustainable services: WASH, schools, health



Village Layout with Agricultural Land

## CRITICAL DESIGN DRIVERS

- Village settlements (each village accommodates 650 - 700 refugees,)
- Definition of community access roads aligned following crest of topography
- Social services at various levels, village and clusters (# villages)
- Each Family receive a shelter plot 30m X 30 and 30m X 30m agricultural land.
- Agricultural land extends in between refugees ' villages)
- Streams buffered 100m

Source: Palabek Site Plan

# Kyangwali Settlement





