

Imvepi Refugee Settlement

Health and Nutrition updates-Week 11 (8<sup>th</sup> to 14<sup>th</sup> March 2018)

Health & Nutrition

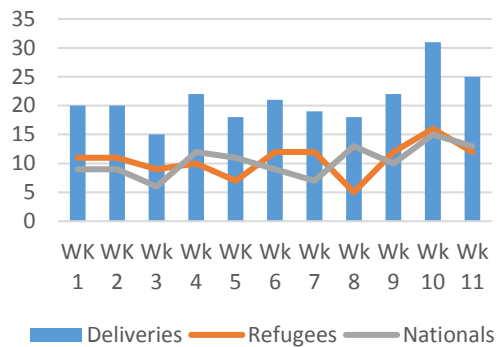
Health

**Partners and Agencies:** UNHCR, UNFPA, UNICEF, ADLG/DHO, Medical Teams International, Save the Children International (SCI), Medicines Sans Frontiers France (MSF-F), Global Refuge International (GRI), CARE Uganda International, CUAMM Doctors with Africa, Uganda Red Cross Society (URCS), The Transcultural Organization (TPO), Infectious Disease Institute (IDI)

<b>Total OPD/ IPD Consultations</b>		<ul style="list-style-type: none"> <li>▪ <b>OPD Consultations:</b> 2,543 (2,074 refugees and 469 nationals) new OPD consultations were made in week 11 compared to 2,490 in week 10. Of which 2,074 (82%) were to refugees and 469 (18%) to nationals.</li> <li>▪ <b>Mental Health and Psychosocial Support Services (MHPSS):</b> 19 new clients and 03 revisit clients received MHPSS in week 11 compared to 20 in week 10. The major psychiatric cases being post-traumatic stress disorder, depression and depression.</li> <li>▪ <b>IPD admissions:</b> 78(60 refugees and 18 nationals) new In-patients admissions were made in week 11 compared to 87 in week 10.</li> <li>▪ <b>New referrals:</b> 82 (58 refugees and 24 national) new referrals were made in week 10 to Arua Regional Referral Hospital compared to 29 in week 10.</li> </ul>													
<b>Morbidity</b>		<p><b>Proportional Morbidity:</b></p> <ul style="list-style-type: none"> <li>• 498 (19%) confirmed malaria cases</li> <li>• 733 (29%) Acute RTI</li> <li>• 211 (8%) Watery Diarrhoea</li> <li>• 10 bloody diarrhoea cases.</li> </ul>				<p><b>Vaccination; Deworming; Vitamin A</b></p>			<p><b>Vaccination, deworming &amp; vitamin A supplementation for new arrivals in Imvepi RC:</b></p> <ul style="list-style-type: none"> <li>• 326 new arrival children &lt;5 year were vaccinated in week 11 compared to 357 in week 10. (186 against measles, 140 against Polio, 15 mothers against T.T, 100 received Vitamin A Supplementation and 115 dewormed)</li> </ul> <p><b>Expanded programme on Immunization:</b></p> <ul style="list-style-type: none"> <li>• 388 (258 refugees and 130 nationals) individuals were vaccinated in week 11 compared to 439 in week 10.</li> <li>• 165 received vitamin A supplementation in week 11 compared to 109 in week 10.</li> <li>• 165 mothers received TT in week 11 compared to 138 in week 10.</li> </ul>						
<b>Disease</b>	<b>A F P</b>	<b>Anim al bites</b>	<b>C H O L E R A</b>	<b>B L O O D Y diarr hea</b>	<b>Watery diarrhea</b>	<b>G u i n e a W o r m</b>	<b>Malaria</b>	<b>M e a s l e s</b>	<b>M E N I N G I T I s</b>	<b>Yellow Fever</b>	<b>N N T</b>	<b>V H F &amp; R V F</b>	<b>T y p h o i d</b>	<b>M D R T B</b>	<b>Human Influenza samples</b>
<b>cases</b>	0	0	0	10	211	0	498	0	0	0	0	0	0	0	0
<b>Deaths</b>	0	0	0	0	0	0	0	0	0	0	0	0	0	0	0

Suspect cholera Cases Identified in the Day	0	Suspect cholera Cases Undergoing Treatment	0		
Suspect meningitis Cases Identified in the day	0	Suspected meningitis Cases Undergoing Treatment	0		
Suspect measles Cases Identified in the day	0	Suspected measles Cases Undergoing Treatment	0		
Suspected VHF/RVF identified in the week	0	Suspected VHF/RVF on treatment in the week	0		
Mortality	<p><b>Deaths:</b> 02 (02 refugee and 00 national) death was reported in week 11 compared to 02 in week 10. Two 02 deaths occurred among individuals above 5 years and 00 below 5 years. 01 from health facility and 01 from community. 00 neonatal death and 00 maternal death.</p> <p><b>Crude mortality rate (CMR):</b> 0.02 deaths/10,000/day in week 11 as was in week week 10.</p> <p><b>Under Five Mortality (U5MR):</b> 0.0 Deaths / 10,000/ day in week 11 compared to 0.1/10,000/ day in week 10.</p>		<p><b>Health Workers per 10,000 Population</b></p> <p>Total # skilled staff 53 (Medical officer, clinical officers, Nurses, and midwives). This translates to 4.2/10,000 population. Given the current population of Imvepi 128,249 (21,513 children &lt; 5 years) as at 2<sup>nd</sup> March 2018.</p>		
Reproductive Health, HIV and AIDS and TB care	<ul style="list-style-type: none"> <li>▪ <b>Total ANC:</b> 222 (136 refugees and 86 nationals) pregnant women attended ANC in week 11 compared to 214 in week 10</li> <li>▪ <b>First ANC visits:</b> 114 (80 refugees and 34 nationals) pregnant mothers attended first ANC in week 11 compared to 119 in week 10.</li> <li>▪ <b>Fourth ANC Visits:</b> 31 (21 refugees and 10 nationals) pregnant women attended 4<sup>th</sup> ANC sessions in week 11 compared to 17 in week 10.</li> </ul> <table border="1" style="width: 100%;"> <tr> <td style="width: 50%; vertical-align: top;"> <p><u>Labour and delivery care:</u></p> </td> <td style="width: 50%; vertical-align: top;"> <p><u>Elimination of mother to child HIV transmission (eMTCT):</u></p> <ul style="list-style-type: none"> <li>▪ 114 (80 refugees and 34 nationals) nationals) pregnant mothers who attended ANC1 were provided HIV testing services in week 11 and all found HIV negative compared to 119 in week 10. No (00) HIV positive delivery took place, therefore, we registered 100% coverage of eMTCT.</li> </ul> </td> </tr> </table>			<p><u>Labour and delivery care:</u></p>	<p><u>Elimination of mother to child HIV transmission (eMTCT):</u></p> <ul style="list-style-type: none"> <li>▪ 114 (80 refugees and 34 nationals) nationals) pregnant mothers who attended ANC1 were provided HIV testing services in week 11 and all found HIV negative compared to 119 in week 10. No (00) HIV positive delivery took place, therefore, we registered 100% coverage of eMTCT.</li> </ul>
<p><u>Labour and delivery care:</u></p>	<p><u>Elimination of mother to child HIV transmission (eMTCT):</u></p> <ul style="list-style-type: none"> <li>▪ 114 (80 refugees and 34 nationals) nationals) pregnant mothers who attended ANC1 were provided HIV testing services in week 11 and all found HIV negative compared to 119 in week 10. No (00) HIV positive delivery took place, therefore, we registered 100% coverage of eMTCT.</li> </ul>				

Weekly deliveries by skilled health workers in Imvepi settlement



- 25 (12 refugees and 13 nationals) deliveries were conducted by skilled health workers in week 11 compared to 31 in week 10.

**Post Natal Care:** 59 (26 refugees and 33 nationals) lactating mothers attended PNC in week 11 compared to 33 in week 10.

**Clinical Management of rape:**

- 00 reported SGBV cases.

**HIV and AIDS services:**

- 03 (02 refugees and 01 national) individuals was newly tested HIV positive in week 11 compared to 04 in week 10.
- 2,243 (1,448 refugees and 795 nationals) individuals were offered HIV testing services in week 11 compared to 1,051 in week 10.
- 03 (02 refugees and 01 national) newly identified HIV positive individuals were initiated on HIV care and support.
- 44,354 pieces of condoms were distributed for HIV prevention in the community in week 11 compared to 6,508 in week 10.

**TB treatment and care:**

- 03 (02 refugees and 01 national) individuals were newly diagnosed with active TB and all 03 were initiated on treatment in week 11 compared to 00 in week 10.

**Achievements and Impact**

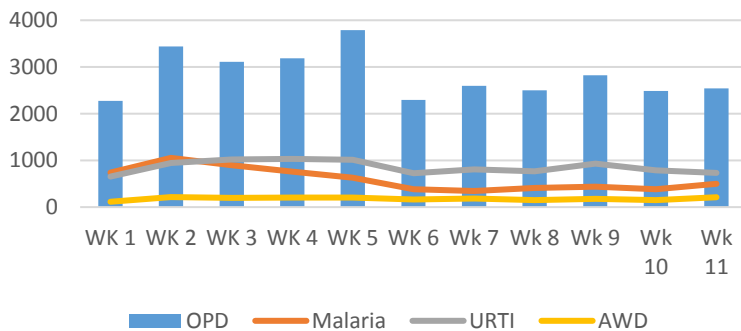
**OPD Consultations:**

- 2,543 (2,074 refugees and 469 nationals) new OPD consultations were made in week 11 compared to 2,490 in week 10. Of which 82% of the new consultations were to refugees and 18% to nationals. The weekly proportional morbidity shows that the leading cause of morbidity in the week is Respiratory tract infections with 29%, malaria accounted for 19% and Watery Diarrhoea/WD remained at 8%.
- Therefore malaria, URTI and diarrhoeal diseases accounted for 57% in week 11 compared to 53% in week 10.
- The incidence of malaria, acute RTI and watery diarrhoea is estimated at 4 cases/1000 persons/week, 6 cases/1,000 persons and 2 cases/1000 persons /week respectively. During the week preventive measures through 110 active VHT's including mobile clinics and outreaches for treatment of malaria and other conditions were conducted.

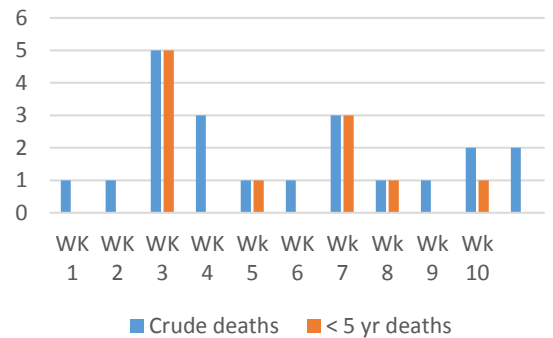
**Mortality and Morbidity:**

Weekly OPD Consultations and Morbidity trends in Imvepi settlement	Weekly Mortality trends in Imvepi settlement
--	--

**Weekly OPD Consultations and Morbidity in Rhino Camp settlement**



**Weekly mortalities in Imvepi settlement**



- 02 (02 refugee and 00 national) deaths were reported from Imvepi settlement in week 11 as was in Week 10. Two of the deaths occurred among individuals above 5 years and 00 among those less than 5 years. 01 deaths occurred from the health facilities and 01 from the community. 00 neonatal death and 00 maternal deaths. Therefore, Crude Mortality Rate (CMR) remained 0.02 deaths/10,000/day and under-5 year mortality ratio (U5MR) was at 0.0 deaths/10,000/day below the emergency threshold of 1 and 2 deaths/10,000/day respectively. The cause/ probable causes of mortality being 01 injuries during mob justice and 01 pneumonia.

**Community based Control of Disease Outbreaks:**

- 00 suspected measles cases were reported from Imvepi settlement in week 11 from week 05.
- 00 suspected rift valley fever/ viral haemorrhagic fever cases was reported in week 11 from week 08.
- Surveillance was further maintained through training of 110 village health teams (VHT's) spread out in the settlement and weekly analysis of Health Information system reporting continued in the week(see priority diseases surveillance).

**Medical screening of new arrivals:**

- 444 new arrivals were medically screened at the Kuluba in week 11 compared to 416 in week 10.
- 441 individuals in Imvepi reception clinic were medically screened in week 11 compared to 463 in week 10.

**TB screening at Imvepi reception:**

- Routinely all coughing new arrivals are taken sputum samples for geneXpert through hub laboratory in Arua regional referral hospital and Yumbe hospital.

**Other updates and activities of the week:**

- Health messages for new arrivals regarding morbidity, healthcare in the settlements passed to new arrivals while in transit to the settlements.
- MSF-F continued to conduct surveillance, mental health and SGBV support services in Imvepi settlement in week 11.
- Global Refuge International (GRI) continued to conduct routine OPD services at point I zone 2 and supported 425 individuals in week 11 compared to 376 in week 10.

**Mental Health and Psychosocial support services:**

- TPO continued to support mental health and psychosocial support services. 19 cases received mental health and psychosocial support in week 11 and cumulatively TPO reached 138 individuals with mental disorders.

**District coordination meeting in preparation for World TB day**

- 01 district coordination meeting was held in preparation for the national world TB day celebrations on 24<sup>th</sup> March 2018 to be held in Arua town.

**Identified Needs and Remaining Gaps:**

- There was reported stock out of measles vaccine in some health facilities. This was reported to the district health office which confirmed from national medical stores that deliveries have been dispatched from Entebbe and vaccines will be received in the district vaccines stores in week 12.

### Nutrition

**Partners and Agencies:** World Food Programme (WFP), UNHCR, UNICEF, ADLG/DHO, Medical teams international, CUAMM Doctors with Africa, Action Against Hunger (ACF), Global Refuge International (GRI), and Save the Children international (SCI).

<b>Imvepi Reception Center</b> Weekly Proxy Global Acute Malnutrition among children 6-59 months, MUAC (< 125 mm and/or oedema) <b>Imvepi reception centre screened 100 new arrivals and (07 MAM and 02 SAM)</b> <b>26 pregnant and lactating mothers (02 &lt; 23 cm and 24 &gt; 23 cm)</b>	<b>9%</b>	<b>Community:</b> overall weekly Proxy Global Acute Malnutrition among children 6-59 months, MUAC (< 125mm and/or oedema) Overall settlement 4,592 (3,432 refugees and 1,160 nationals) screened of which (53 MAM and 11 SAM)	<b>1.4%</b>
--	-----------	--	-------------

### Food Assistance

General Food Distribution <b>Imvepi</b> (kilocalories/person/day) Cereals (sorghum) 12kg, Pulses 2.4Kg, Corn soya blend (CSB) 1.5Kg, Vegetable oil 0.9Kg, Salt 0.15Kg. 2100Kcal/person/day FBM: 94% within acceptable and 6% above and 0% below	2100	New arrivals ration (kilocal /person/day)	2100
--	------	---	------

### Narrative

#### Achievements and Impact

- 100 children less than 5 years and 26 pregnant and lactating women (PLW) in week 11 compared to 98 less than 5 years and 09 PLW were screened for their nutritional status respectively at Imvepi reception center in week 10. 07 moderately malnourished (MAM) and 02 severely malnourished (SAM) and 02 mother pregnant and lactating had MUAC < 23 cm (moderately malnourished) were identified.
- Similarly, in the entire Imvepi settlement, 4,592 children under 5's nutritional status was assessed in week 11 compared to 1,011 in week 10. There were 53 MAM and 11 SAM without complication cases identified. Overall weekly proxy Global acute malnutrition among children 6-59 months screened in Imvepi settlement in week 11 was 1.4% compared to 1.2% in week 10.
- 53 and 11 new malnourished children were enrolled in SFP and OTP in week 10 compared to 09 and 03 in week 10 respectively. All the identified malnourished were initiated on therapeutic feeds and have been linked to Omugo extension settlement.
- In week 11, fifty five – 55 (45 refugees and 10 nationals) were exited from targeted SFP and 49 (41 refugees and 08 nationals) were cured and 02 (01 refugee and 01 national) defaulters registered and 04 (03 refugees and 01 national) non-respondents. Therefore recovery rates for refugees was 41(91%) and for nationals 08 (80%). Defaulter rates was 01 (2.2%) for refugees and 01 (10%) for nationals. Death rates among both refugees and nationals was 0(0%) and non- response rates of 03 (6.7%) for refugees and 01 (10%) for nationals.
- Similarly, 05 (03 refugees and 02 nationals) individuals were exited from the OTP in week 11 compared to 02 in week 10. All 05 (03 refugees and 02 national) cured and recovery rates of 05 (100%), 0(0%) defaulter rates and 0 (0%) non-response rate.

#### Community nutrition activities

#### Maternal Child Health Nutrition:

- MTI continued to conduct maternal child health nutrition (MCHN) for pregnant and lactating mothers and children 6-23 months in the settlement. In week 11, MTI conducted 4 MCHN outreaches in Imvepi settlement and 2,719 (1546 refugees and 1173 nationals) received Corn Soya Blend mix (CSB++). In addition 1302 were dewormed and 245 received vitamin A supplementation

#### Nutrition and IYCF-E education

- 3,432 community members were educated on nutrition, WASH practices, feeding children and optimal IYCF-E practices in week 11.

**Infant and Young Child in Emergency activities:**

**IYCF through mother baby areas:**

- During the week SCI continued to run 2 MBA's in Imvepi settlement serving pregnant and lactating mothers with optimal breast feeding promotion messages.

**Distribution of hygiene (IMAM) kits:**

- Action Against Hunger (ACF) continued to distribute hygiene kits for IMAM beneficiaries comprising of Containers for water collection and storage, chlorine tablets and bathing soap.

**Identified Needs and Remaining Gaps**

- No major challenges reported in week 11.