

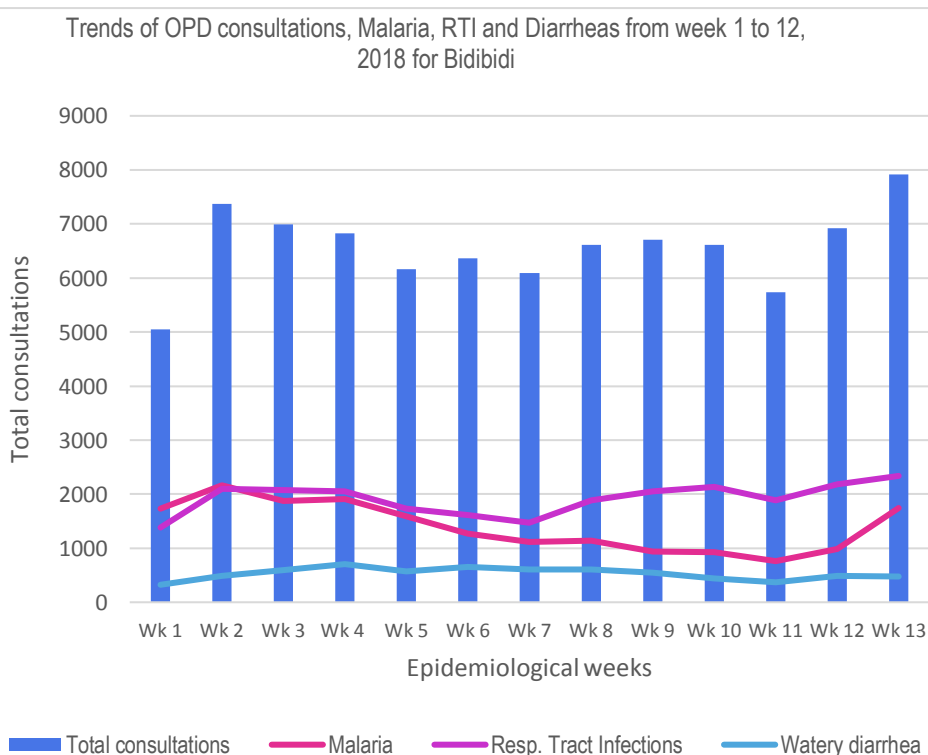
## Health & Nutrition update



Health: UNHCR, SCI, IRC, MSF, RMF, TPO, UNFPA, HHI, UNICEF, YDLG

<b>Mortality</b>	<ul style="list-style-type: none"> <li>A total of six (6) deaths were reported including one below the age of five and two above 60 years.</li> <li>Crude mortality rate (CMR): 0.03 deaths/10,000/day</li> <li>U5MR: 0.03 deaths/10,000/day</li> </ul>	<b>Health Workers per 10,000 Population</b>	Total # of skilled staff= 465 (as of 31 <sup>st</sup> of October 17). This translates to 17.1/10,000 population (STD 22.2/10,000/population)
<b>Reproductive Health, HIV &amp; AIDS</b>	<ul style="list-style-type: none"> <li>Total ANC1-129; ANC4-125; 172 tested for HIV during ANC; three tested positive for HIV.</li> <li>Deliveries: 115 in Health Facilities, while 8 delivered in the community; Total PNC-191.</li> <li>Number of new patients on ART- 4</li> </ul>		
<b>Total OPD/ IPD Consultations</b>	<ul style="list-style-type: none"> <li>OPD consultations 7,912 of which 1,154 were nationals (14.6%)</li> <li>New IPD admissions: 328</li> <li>135 clients received Mental Health and Psychosocial Support (MHPSS) (24 new cases and 111 visits)</li> <li>Total number of news referrals: 53 cases</li> </ul>		
<b>Hepatitis B Vaccination campaign</b>	<ul style="list-style-type: none"> <li>Total screened: 3,658</li> <li>Total positives: 307</li> </ul>	<b>Total vaccinations</b>	Hep B 1: 3,284 Hep B 2: 45 Hep B 3: 22
<b>Vaccination; Deworming; Vitamin A</b>	BCG-114; DPT3-141; PCV3-141; Measles- 133; Vitamin A- 296; Deworming- 205	<b>Proportional Morbidity</b>	Malaria 1,749 (17.3%); Acute RTI 2,338 (23.1 %); and Watery Diarrhoea 474 (4.7%)

### Achievements: Narrative



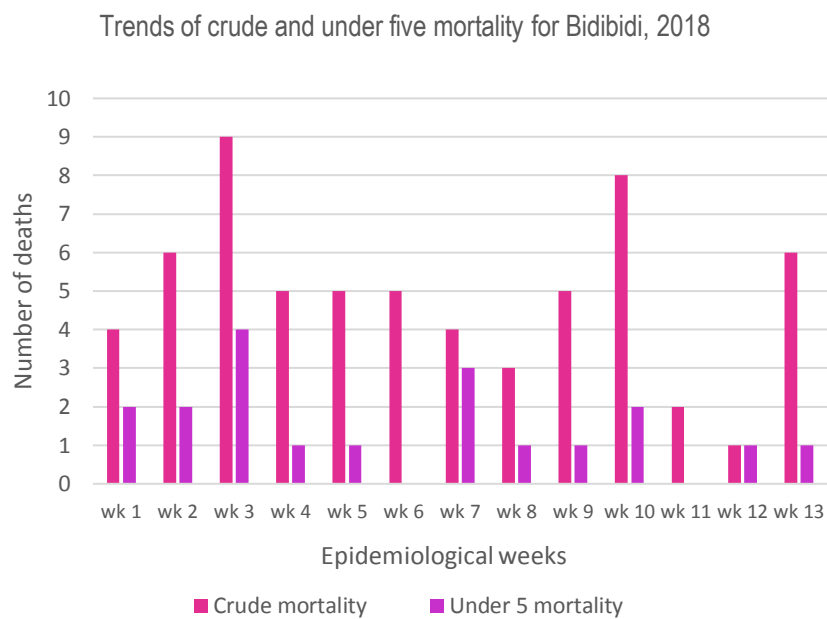
#### OPD Consultations

During the reporting period, a total of 7,912 OPD consultations were made compared to 6,916 reported the previous week. The leading causes of illness (proportional morbidity) were Acute Respiratory Tract Infections/RTI (23.1%), Malaria (17.3%) followed by Watery Diarrhoea/WD (4.7%); this implies that the three top disease conditions contributed about 45% of the total morbidity for the reporting week.

The incidences for Malaria, RTIs and watery diarrhoea this week are estimated at **6, 8 and 2** cases/1,000 persons/week respectively.

No cases of typhoid nor Bloody diarrheas reported.

▪ **Mortality:**



A total of five (6) deaths (2 F; 4 M) including one under the age of five and two above 60 years were registered (1 Settlement Facilities, 0 community, 5 Public Health facilities). Probable causes of deaths were as follows: Severe Anaemia (3), Cancer of oesophagus (1), Maternal death due to peri-operative complications (1) and PUD (1). Notification for maternal death has been done awaiting a maternal death audit.

The Crude Mortality Rate (CMR) and Under 5 mortality rates are estimated at 0.03 deaths/10,000/day for both indicators, which are both below the emergency threshold of 1 and 2 deaths/10,000/day respectively.

▪ **Mental Health and Psychosocial Support:**

Total number of consultations during the week were 135 (24 new cases and 135 revisits). Consultations were made for Epilepsy (101), Depression (22), Psychosis (7), Drug abuse (7), Suicide attempt (0), and Completed suicide (1).

▪ **Reproductive Health, HIV/AIDS:**

Total for ANC 1 was 129, ANC 4 was 125 and PNC was 191, while 115 deliveries were conducted (with 29 deliveries by nationals). One hundred and seventy two (172) mothers were tested during ANC; three tested positive and were linked to care. The total number of positive clients during the week is 4 and were all enrolled into care.

▪ **Expanded program for immunization, Vitamin A supplementation and deworming:**

A total of 141 doses of DPT 3 and equal doses for PCV3; 133 doses of measles and 114 doses of BCG were administered to children in the settlement; 296 doses of vitamin A supplements and 205 doses of deworming tablets were also given.

▪ **General updates:**

- Hepatitis B vaccination campaign ongoing across the settlement
- Preparations for Integrated Child health days activities completed; Implementation underway

▪ **Challenges**

- The heavy rains continued to disrupt health service delivery in temporary infrastructure



## Nutrition and food security: UNHCR, YDLG, ACF, RMF, UNICEF, CUAMM, WFP, SCI, WVI

Proxy Global Acute Malnutrition, MUAC (< 125 mm and/or oedema) <b>(Zone 1,2,3,4, 5)</b>	<b>3.6%</b>	Proxy Global Acute Malnutrition, MUAC (< 125 mm and/or oedema) <b>(Zone 1)</b>	<b>1.46%</b>
Proxy Global Acute Malnutrition, MUAC (< 125 mm and/or oedema) <b>(Zone 2)</b>	<b>0.90%</b>	Proxy Global Acute Malnutrition, MUAC (< 125 mm and/or oedema) <b>(Zone 3)</b>	<b>1.02%</b>
Proxy Global Acute Malnutrition, MUAC (< 125 mm and/or oedema) <b>(Zone 4)</b>	<b>1.73%</b>	Proxy Global Acute Malnutrition, MUAC (< 125 mm and/or oedema) <b>Zone 5</b>	<b>1.64%</b>

### Food Assistance

General Food Distribution <b>(Zone 1-5)</b> (kilocalories/person/day)	<b>2081</b>	New arrivals ration (Kcal /person/day)	N/A
--	-------------	--	-----

#### Achievements: Narrative

- A total of **60** children aged 6-59 months were enrolled in the feeding programs in the reporting period (**2** in ITC, **5** in OTC and **53** in SFP). A total of **2,843** children were screened during the week.
- A total of **1,089** pregnant and lactating women were screened, only **19** was identified and enrolment into the SFP program.
- A total of **2,250** children aged 6-59 months were reached by MCHN while **518** Pregnant and Lactating women were reached.
- Five (5) children under OTC and two (2) under ITC recovered, one defaulter was recorded under OTC while no deaths.

#### Infant and Young Child Feeding:

- During this reporting period, a total of **51** mother-baby pairs accessed the 3 mother-baby areas of Yangani (**31**), Ombechi (**10**) and Kiranga (**10**).
- Out of the **51** mother-baby pairs mentioned above, **01** pair was accessing MBAs for the first time this year while **50** came for follow up visits.
- All Mother- Baby pairs were assessed, those with breastfeeding difficulties received full assessment, and then one-on-one skilled counselling was offered. Mothers and caretakers without breastfeeding difficulties were given key messages concerning appropriate Infant and Young Child Feeding in Emergencies, and some came to breastfeed.
- A total of **191** homes were visited- 54 referrals were made; 22 for MBA services and 03 for ANC while 11 for medical services