



**Principal settlement specifications**

District: Adjumani  
 Subcounty: Pacara  
 Date of establishment: 1 Jan 2016  
 Surface Area: 666 hectares  
 Current population:  
 Family plot: 30m x 30m  
 Number of blocks: 14

Coordinate System: GCS WGS 1984  
 Datum: WGS 1984  
 Units: Degree

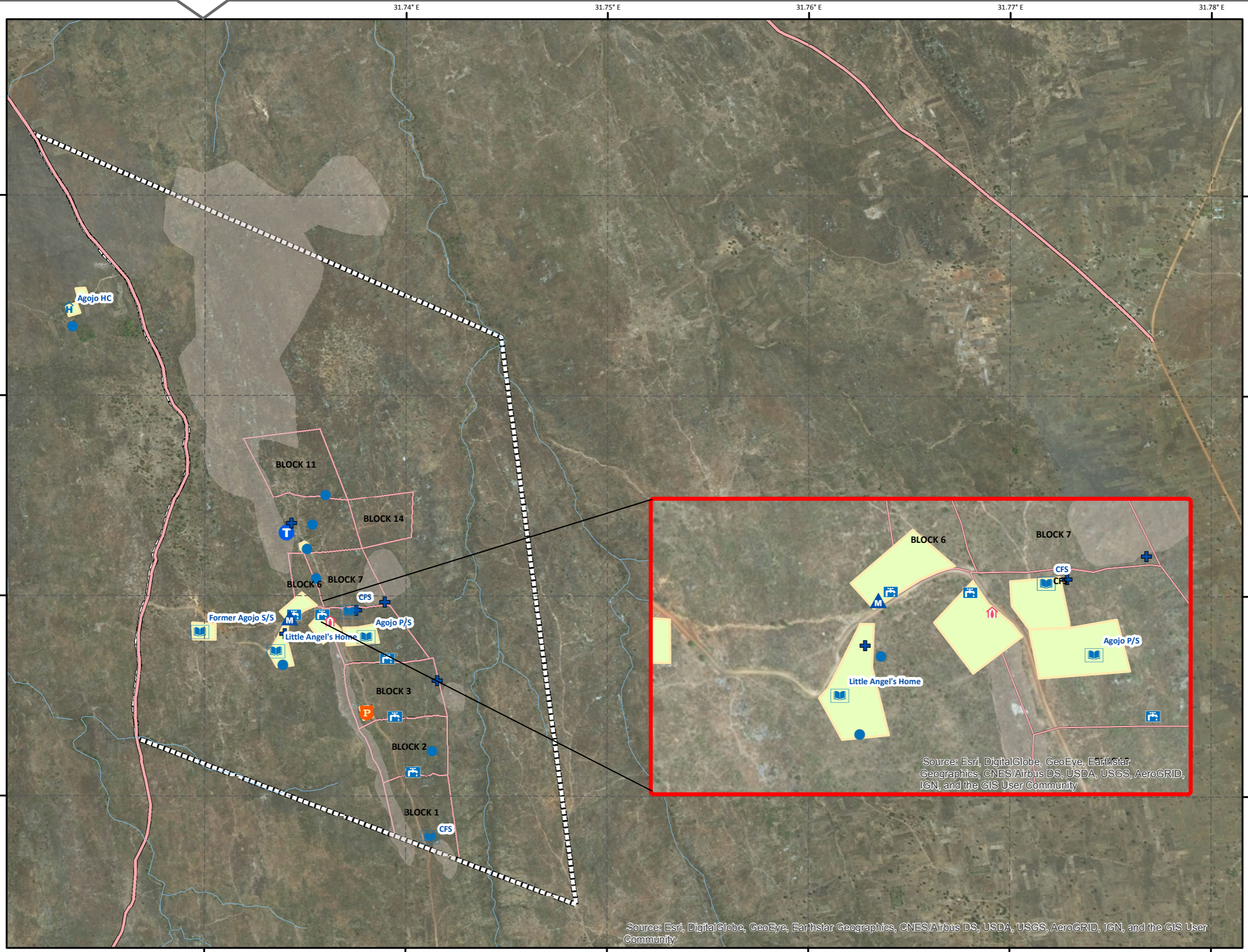
**Legend**

- Borehole
- Church
- Health Center
- Market
- Police
- Reception
- School

**Water points**

- Bore hole
- Tank
- Tap

- River
- Rocks
- major Roads
- Blocks
- Settlement



Source: Esri, DigitalGlobe, GeoEye, Earthstar Geographics, CNES/Airbus DS, USDA, USGS, AeroGRID, IGN, and the GIS User Community

Source: Esri, DigitalGlobe, GeoEye, Earthstar Geographics, CNES/Airbus DS, USDA, USGS, AeroGRID, IGN, and the GIS User Community

