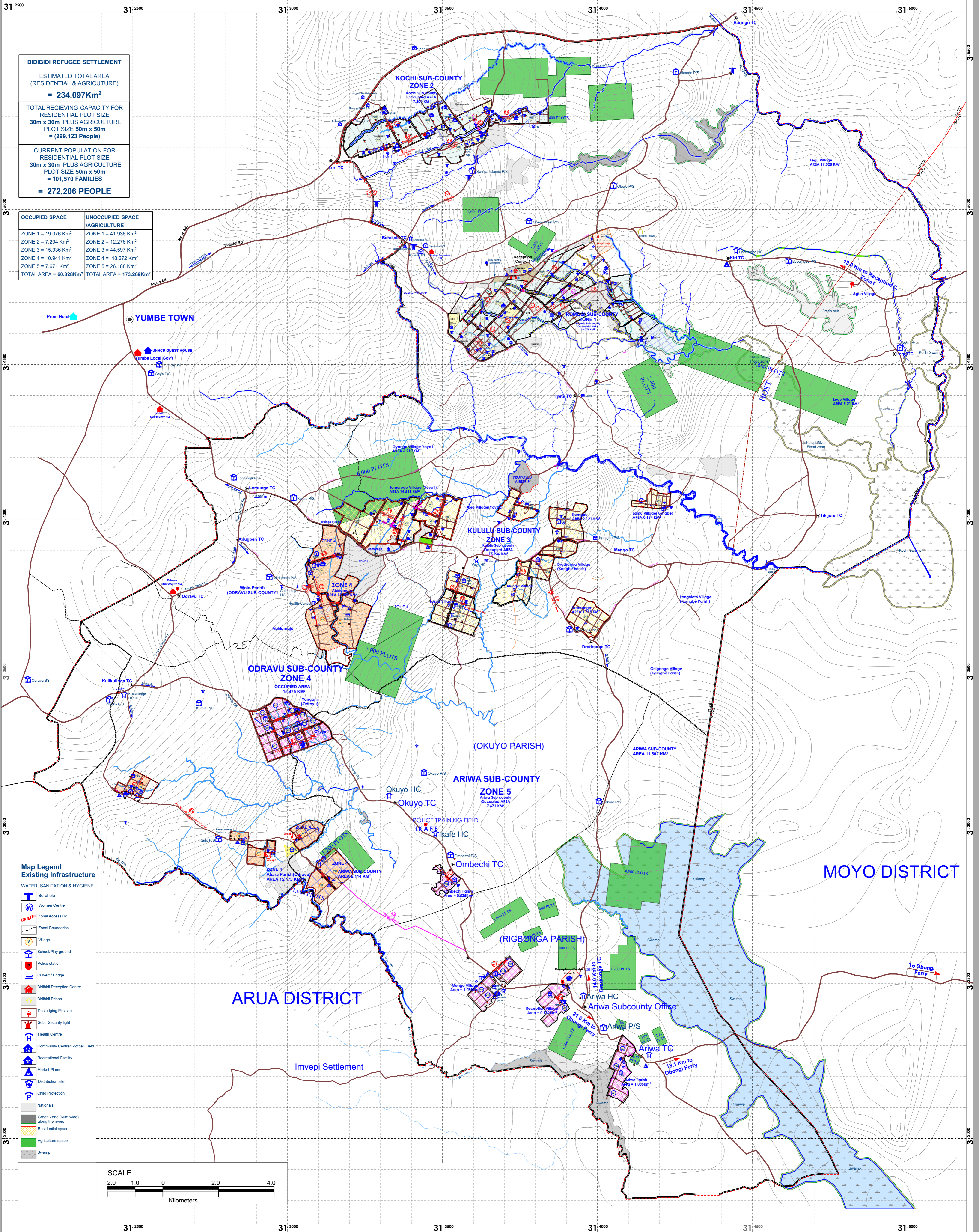
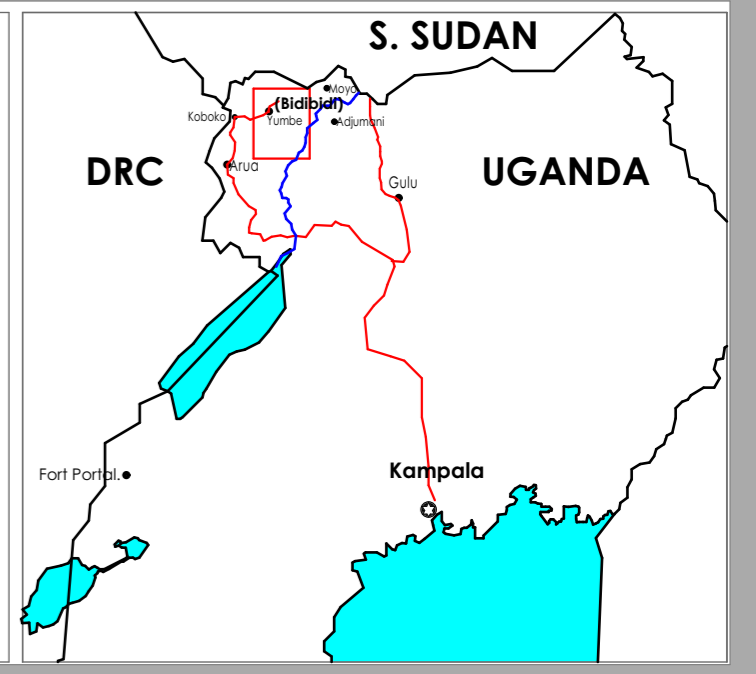


BIDIBIDI REFUGEE SETTLEMENT MASTER PLAN

DRAFT I As of 25th of JANUARY 2018



The boundaries and names shown and the designation used on this map do not imply official endorsement or acceptance by United Nations



BIDIBIDI REFUGEE SETTLEMENT
 ESTIMATED TOTAL AREA (RESIDENTIAL & AGRICULTURE)
 = 234.097Km²
 TOTAL RECEIVING CAPACITY FOR RESIDENTIAL PLOT SIZE 30m x 30m PLUS AGRICULTURE PLOT SIZE 50m x 50m = (299,123 People)
 CURRENT POPULATION FOR RESIDENTIAL PLOT SIZE 30m x 30m PLUS AGRICULTURE PLOT SIZE 50m x 50m = 101,570 FAMILIES = 272,206 PEOPLE

| OCCUPIED SPACE | UNOCCUPIED SPACE /AGRICULTURE |
|------------------------------------|-------------------------------------|
| ZONE 1 = 19.076 Km ² | ZONE 1 = 41.936 Km ² |
| ZONE 2 = 7.204 Km ² | ZONE 2 = 12.276 Km ² |
| ZONE 3 = 15.936 Km ² | ZONE 3 = 44.597 Km ² |
| ZONE 4 = 10.941 Km ² | ZONE 4 = 48.272 Km ² |
| ZONE 5 = 7.671 Km ² | ZONE 5 = 26.188 Km ² |
| TOTAL AREA = 60.828Km ² | TOTAL AREA = 173.269Km ² |

- Map Legend**
Existing Infrastructure
 WATER, SANITATION & HYGIENE
 [Icons for Borehole, Women Centre, Zonal Access Rd, Zonal Boundaries, Village, School/Play ground, Police station, Culvert / Bridge, Bidibidi Reception Centre, Bidibidi Prison, Desludging Pits site, Solar Security light, Health Centre, Community Centre/Football Field, Recreational Facility, Market Place, Distribution site, Child Protection, Nationals, Green Zone (50m wide) along the rivers, Residential space, Agriculture space, Swamp]

