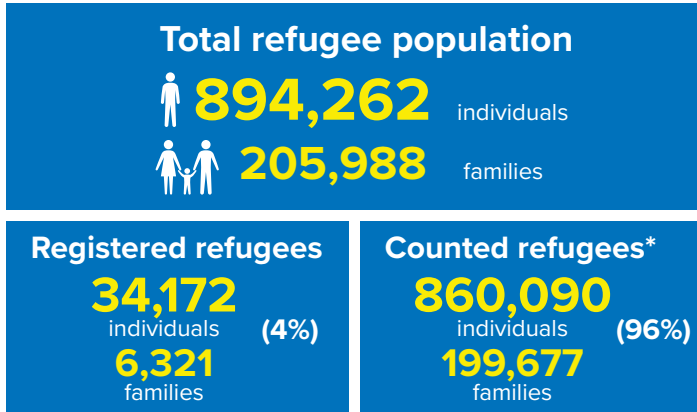
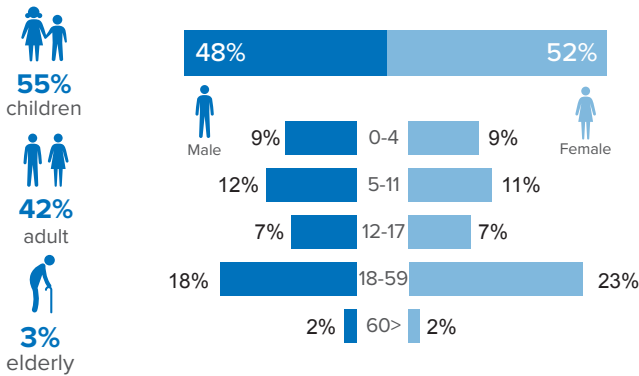


Refugee population figure

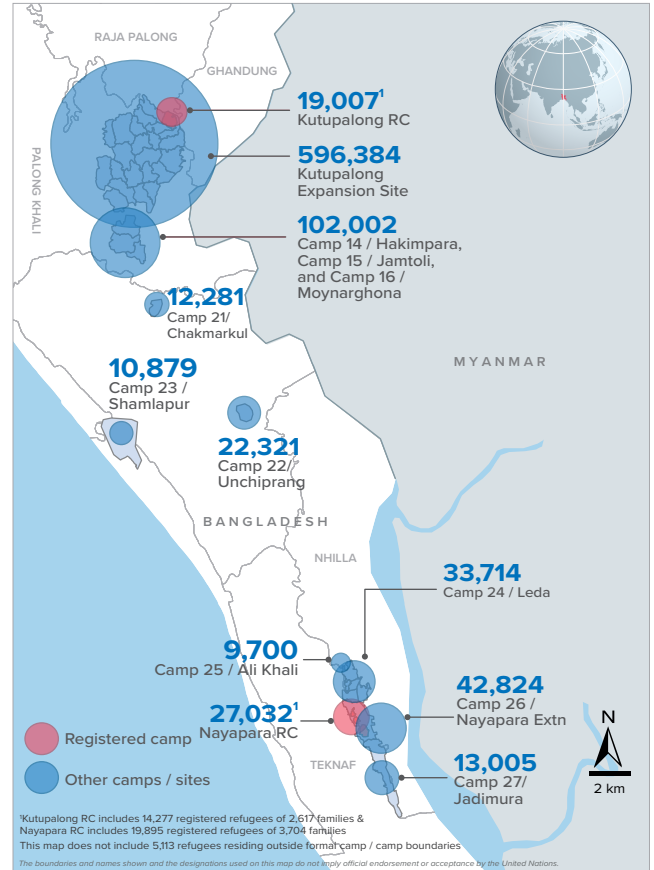


* Some refugees living in host communities and in certain locations beyond the camp boundaries may not have been counted.

Demography

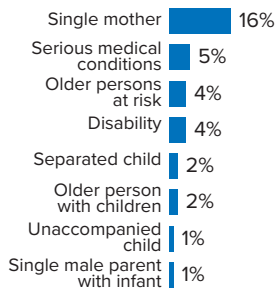


Refugee population density



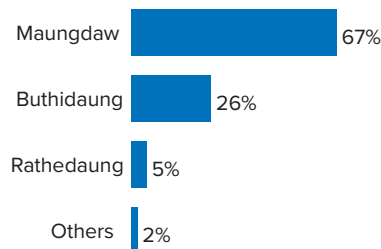
Specific needs

31% of the families have been identified with at least one protection vulnerability*



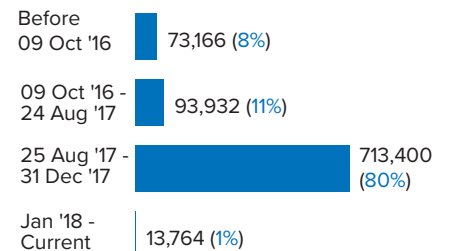
Place of origin

67% of the Rohingya refugees comes from Maungdaw Township



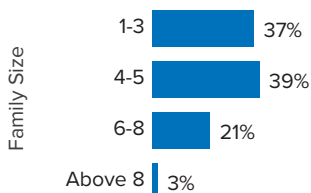
Period of arrival

80% of current population arrived between Aug. and Dec 2017



Family size breakdown

39% of the families have a standard family size of 4-5 persons



Linking exercise

The Linking Exercise, conducted from December 2017 until February 2018, was a collaborative effort between the Government of Bangladesh and the United Nations High Commissioner for Refugees that aimed to merge the family based Rohingya population data collected through the Family Counting Exercise with attributes of the individual Rohingya population data collected by the Ministry of Home Affairs.

The exercise was conducted with a view to creating a unified dataset with individual data grouped into families which will be used to better protect and assist families.

*Figures are the percentage of total families with at least one person with a specific need. More than one specific need may be present within one family.

Age and gender breakdown by camp/site

Camp	Infant female below 1	Infant male below 1	1-4 Children female	1-4 Children male	5-11 Children female	5-11 Children male	12-17 Children female	12-17 Children male	18-59 Adult female	18-59 Adult male	60+ Elderly female	60+ Elderly male	Total Families	Total Individuals
Camp 15	946	893	3,536	3,675	5,282	5,472	3,411	3,596	11,495	9,168	901	905	11,140	49,280
Camp 26	720	647	3,255	3,264	4,928	5,443	3,107	2,915	10,227	7,075	662	581	9,774	42,824
Camp 13	705	753	3,040	3,138	4,447	4,708	2,735	2,807	9,607	7,623	736	677	9,599	40,976
Camp 1W	755	755	2,916	2,928	4,393	4,455	2,676	2,763	9,561	7,684	853	746	9,343	40,485
Camp 1E	655	729	2,766	2,929	4,214	4,437	2,618	2,747	9,223	7,691	787	685	9,086	39,481
Camp 3	676	720	2,994	3,055	4,128	4,356	2,472	2,664	9,236	7,218	679	572	9,008	38,770
Camp 7	699	707	2,933	3,066	4,162	4,360	2,587	2,547	8,982	7,056	706	637	9,145	38,442
Camp 9	619	557	2,748	2,763	3,938	4,007	2,468	2,485	8,448	6,860	708	689	8,560	36,290
Camp 24	512	524	2,290	2,502	4,044	4,168	2,323	2,414	8,039	5,930	547	421	7,800	33,714
Camp 8W	549	532	2,644	2,592	3,482	3,677	2,046	2,159	7,697	6,153	613	543	7,521	32,687
Camp 10	628	610	2,549	2,664	3,351	3,713	2,119	2,061	7,663	6,010	594	522	7,531	32,484
Camp 8E	504	504	2,276	2,377	3,421	3,474	2,332	2,265	7,440	5,970	548	558	7,301	31,669
Camp 11	544	574	2,335	2,367	3,348	3,548	2,127	2,185	7,198	5,905	539	496	7,069	31,166
Camp 14	544	576	2,238	2,480	3,302	3,656	2,219	2,209	7,114	5,719	585	517	6,855	31,159
Camp 4	562	595	2,284	2,444	3,420	3,557	1,966	1,960	7,222	5,644	486	385	7,510	30,525
Camp 2E	539	506	2,206	2,265	3,202	3,469	1,750	1,805	6,972	5,218	509	437	6,948	28,878
Camp 18	474	503	2,229	2,275	2,915	3,023	1,814	1,711	6,481	5,069	360	371	6,656	27,225
Nayapara RC*	87	91	1,556	1,631	2,924	3,011	2,307	2,364	7,172	5,028	447	414	5,732	27,032
Camp 2W	411	411	1,853	1,977	2,845	3,090	1,563	1,569	5,893	4,661	490	374	5,750	25,137
Camp 5	445	474	1,969	2,051	2,744	2,820	1,533	1,617	5,953	4,628	456	412	6,035	25,102
Camp 6	512	446	1,994	2,104	2,671	2,850	1,442	1,530	5,704	4,506	427	384	5,722	24,570
Camp 22	411	384	1,607	1,799	2,560	2,631	1,690	1,682	4,861	3,984	378	334	4,602	22,321
Camp 12	370	359	1,609	1,710	2,374	2,632	1,573	1,554	5,108	3,986	408	352	4,875	22,035
Camp 16	433	396	1,586	1,668	2,323	2,536	1,522	1,437	4,959	3,998	383	322	4,823	21,563
Camp 19	331	318	1,554	1,627	2,180	2,426	1,389	1,433	4,706	3,665	340	282	4,666	20,251
Kutupalong RC*	93	80	1,087	1,241	2,008	2,146	1,561	1,505	4,847	3,873	292	274	3,786	19,007
Camp 17	227	268	1,274	1,260	1,669	1,755	941	940	3,555	2,715	221	217	3,545	15,042
Camp 27	222	194	1,006	1,072	1,545	1,542	925	958	3,010	2,165	198	168	2,891	13,005
Camp 21	229	213	909	965	1,347	1,410	760	800	2,963	2,367	184	134	3,011	12,281
Camp 23	182	200	796	824	1,445	1,472	629	648	2,667	1,687	170	159	2,641	10,879
Camp 25	141	160	725	716	1,133	1,217	759	700	2,254	1,611	171	113	2,184	9,700
Camp 20	125	135	552	634	786	843	411	445	1,773	1,313	123	98	1,750	7,238
Camp 4 Extension	84	86	325	370	486	488	243	233	1,034	810	62	61	1,036	4,282
Camp 20 Extension	66	59	305	297	389	421	224	227	877	690	50	44	887	3,649
No camp**	87	83	393	424	565	601	318	339	1,194	935	98	76	1,206	5,113
Total	15,087	15,042	66,339	69,154	97,971	103,414	60,560	61,274	211,135	164,615	15,711	13,960	205,988	894,262

*Kutupalong RC includes 14,277 registered refugees of 2,617 families & Nayapara RC includes 19,895 registered refugees of 3,704 families

**This represents refugees residing outside formal camp boundaries

Population figures by period of arrival

Arrival Period	Before 09 Oct 2016		09 Oct 2016 - 24 Aug 2017		25 Aug 2017 - 31 Dec 2017		01 Jan 2018 - Current date		Total Families	Total Individuals
Camp	Total Families	Total Individuals	Total Families	Total Individuals	Total Families	Total Individuals	Total Families	Total Individuals		
Camp 15	11	47	767	3,399	10,361	45,826	1	8	11,140	49,280
Camp 26	72	352	851	3,797	8,394	36,696	457	1,979	9,774	42,824
Camp 13	11	42	785	3,436	8,784	37,419	19	79	9,599	40,976
Camp 1W	20	79	1,038	4,454	8,263	35,878	22	74	9,343	40,485
Camp 1E	34	163	1,609	6,910	7,416	32,307	27	101	9,086	39,481
Camp 3	17	80	946	4,164	8,016	34,406	29	120	9,008	38,770
Camp 7	121	529	1,060	4,583	7,910	33,111	54	219	9,145	38,442
Camp 9	89	349	2,111	8,584	6,356	27,343	4	14	8,560	36,290
Camp 24	2,180	10,558	527	2,224	5,077	20,880	16	52	7,800	33,714
Camp 8W	25	113	655	2,854	6,768	29,439	73	281	7,521	32,687
Camp 10	8	39	614	2,618	6,896	29,780	13	47	7,531	32,484
Camp 8E	34	142	854	3,738	6,392	27,706	21	83	7,301	31,669
Camp 11	1	3	1,089	4,836	5,976	26,315	3	12	7,069	31,166
Camp 14	7	25	600	2,784	6,241	28,316	7	34	6,855	31,159
Camp 4	22	99	292	1,204	6,959	28,226	237	996	7,510	30,525
Camp 2E	3,238	13,684	1,676	7,083	2,001	8,005	33	106	6,948	28,878
Camp 18	12	48	166	686	6,451	26,391	27	100	6,656	27,225
Nayapara RC*	3,751	20,084	252	977	1,693	5,865	36	106	5,732	27,032
Camp 2W	1,833	8,410	1,400	6,082	2,470	10,486	47	159	5,750	25,137
Camp 5	23	90	535	2,267	5,459	22,678	18	67	6,035	25,102
Camp 6	56	254	1,074	4,840	4,577	19,425	15	51	5,722	24,570
Camp 22	6	39	206	1,001	4,381	21,253	9	28	4,602	22,321
Camp 12	3	15	252	1,155	4,599	20,764	21	101	4,875	22,035
Camp 16	5	25	281	1,243	4,537	20,295	-	-	4,823	21,563
Camp 19	2	7	387	1,757	4,189	18,112	88	375	4,666	20,251
Kutupalong RC*	2,927	15,603	198	778	643	2,571	18	55	3,786	19,007
Camp 17	28	126	156	630	2,250	9,421	1,111	4,865	3,545	15,042
Camp 27	29	142	259	1,213	2,470	11,041	133	609	2,891	13,005
Camp 21	12	53	144	626	2,732	11,153	123	449	3,011	12,281
Camp 23	254	1,171	284	1,210	2,100	8,486	3	12	2,641	10,879
Camp 25	18	90	254	1,133	1,908	8,458	4	19	2,184	9,700
Camp 20	57	255	110	481	1,262	5,204	321	1,298	1,750	7,238
Camp 4 Extension	43	164	67	298	868	3,572	58	248	1,036	4,282
Camp 20 Extension	15	62	60	261	642	2,634	170	692	887	3,649
No camp**	50	224	147	626	927	3,938	82	325	1,206	5,113
Grand Total	15,014	73,166	21,706	93,932	165,968	713,400	3,300	13,764	205,988	894,262

*Kutupalong RC includes 14,277 registered refugees of 2,617 families & Nayapara RC includes 19,895 registered refugees of 3,704 families

**This represents refugees residing outside formal camp boundaries

Creation date: 15 September 2018 Sources: UNHCR Feedback: bgdcoim@unhcr.org

Population figures by specific needs

Camp	Families with separated children	Families with unaccompanied children	Families with a person with disability	Families with older person at risk	Families with older person at risk with children	Families with people with serious medical condition	Single male parents with infants	Single female parent	Families with people with specific needs
Camp 26	178	55	290	372	115	230	81	2,251	3,344
Camp 15	237	60	353	589	197	463	63	1,611	3,201
Camp 1E	168	41	550	451	319	483	56	1,136	2,880
Nayapara RC	178	41	608	164	50	1,197	35	1,193	2,827
Camp 7	220	29	353	361	244	454	106	1,263	2,766
Camp 13	246	79	311	394	207	344	65	1,424	2,760
Camp 1W	164	32	395	445	213	448	65	1,263	2,749
Camp 24	177	74	301	289	121	258	43	1,643	2,644
Camp 3	198	62	373	353	289	327	63	1,401	2,633
Camp 9	150	74	383	396	263	488	95	1,048	2,511
Camp 4	239	87	180	290	196	268	100	1,432	2,459
Camp 10	126	79	384	337	243	511	92	1,029	2,416
Camp 8E	154	70	343	369	243	416	84	1,073	2,348
Camp 2E	158	52	256	247	200	312	50	1,186	2,177
Camp 18	155	62	241	225	168	303	81	1,165	2,123
Camp 5	162	70	208	287	167	210	61	1,095	1,956
Camp 11	168	61	267	296	157	230	66	1,070	1,953
Camp 14	118	46	184	314	137	304	42	964	1,850
Camp 6	166	44	219	241	125	316	39	815	1,809
Camp 2W	106	18	280	239	113	264	61	795	1,699
Camp 8W	90	37	246	268	156	289	81	737	1,679
Kutupalong RC	60	15	349	105	39	769	10	584	1,600
Camp 19	121	32	187	215	80	116	44	742	1,386
Camp 12	80	34	142	199	103	138	32	766	1,342
Camp 16	92	22	171	201	81	162	37	711	1,322
Camp 22	70	17	159	157	78	154	16	581	1,119
Camp 17	101	19	128	138	74	108	36	637	1,104
Camp 23	50	12	75	95	43	69	11	742	1,009
Camp 27	49	13	93	76	33	49	21	680	945
Camp 21	66	23	110	96	32	108	35	515	901
Camp 25	38	23	75	84	35	87	18	501	765
Camp 20	26	12	93	69	47	74	20	300	562
Camp 4 Extension	17	10	47	31	24	45	12	142	294
Camp 20 Extension	21	14	35	39	23	35	11	134	268
No camp	25	9	49	59	17	33	13	216	379
Total	4,374	1,428	8,438	8,491	4,632	10,062	1,745	32,845	63,780