

DR Congo

31 July 2018

535,726 refugees in DRC, most of them in the northern and eastern provinces.

99.3% of refugees in DRC live in rural areas.

19 UNHCR offices in DRC, including in remote and difficult to reach areas.

POPULATION OF CONCERN

535,726 refugees and **2,937** asylum-seekers in DRC,

4.49M* Internally Displaced Persons

Country of origin

Rwanda** 217,997

CAR 176,319

S. Sudan 93,564

Burundi 46,502

Rep. of Congo 658

Angola 490

Other 196

TOTAL 535,726

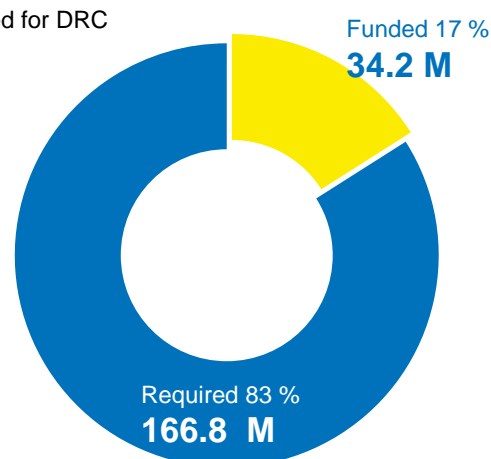
* Source for IDP statistics: OCHA as of December 2017

** The DRC Government presented the number of 245,052 Rwandan refugees as the outcome of a pre-registration exercise by the National Commission for Refugees from December 2014 to January 2015. Biometric registration of Rwandan refugees is ongoing.

FUNDING AS OF 15 AUGUST

USD 201.0 M

requested for DRC



UNHCR PRESENCE

Staff:

266 National staff

96 International staff

36 Affiliate workforce and
deployees

Offices:

1 Regional Representation in
Kinshasa

5 Sub-Offices: Aru, Gbadolite,
Goma, Kananga,
Lubumbashi

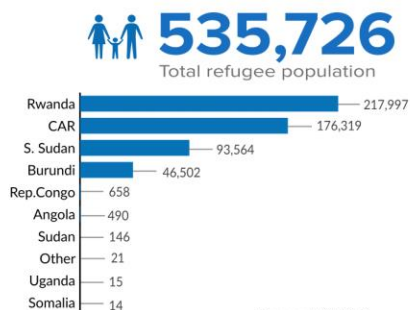
9 Field Offices: Baraka,
Bukavu, Bunia, Dungu,
Kalemie, Libenge, Mbuji-
Mayi, Monga, Tshikapa

4 Field Units: Aba, Bili, Uvira,
Zongo



Refugee from South Sudan works as tailor at Meri site. Haut-Uele ©HCR/C.Delfosse

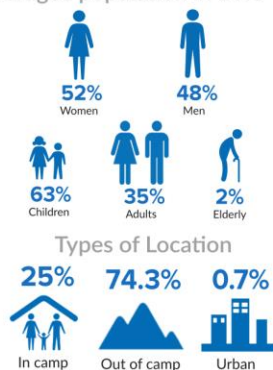
Refugee Population in DRC



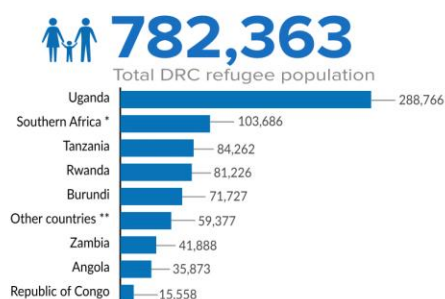
Source: UNHCR

*Other include Syria, Jordan, Eritrea, Chad, Liberia, Sierra Leone etc.

Age and gender breakdown of refugee population in DRC



DRC Refugees in Africa



Source: UNHCR

*Southern Africa include Namibia, Botswana, Lesotho, Malawi, Zimbabwe, Mozambique, Madagascar, RSA and the Kingdom of Eswatini.

**Other Countries include South Sudan, Kenya, Central African Republic and Chad



Working with Partners

- Together with the DRC Government, through the National Commission for Refugees (CNR), UNHCR ensures international protection and delivery of multi-sectorial assistance to persons of concern. UNHCR closely collaborates with other UN Agencies and other humanitarian actors for a coordinated and effective response. UNHCR works with 15 implementing partners (ACTION AID, ACTED, ADES, ADSSE, AIDES, AIRD, ADRA, COOPI, CNR, DRC, INTERSOS, NRC, SAVE CONGO, TSF and WAR CHILD) and many operational partners in the DRC.
- UNHCR leads the Protection Cluster, which coordinates the protection actors in their support of IDPs and other vulnerable persons. UNHCR co-leads the Protection and Prevention component of the National Strategy on Sexual and Gender-Based Violence. UNHCR leads the Shelter Working Group within the Shelter/NFI Cluster. Jointly with IOM, UNHCR co-leads the Camp Coordination and Camp Management Working Group. Jointly with UNOCHA, UNHCR also co-leads the National Cash Working Group.

External / Donors Relations

Donors for UNHCR operations in DRC in 2018

United States of America (22.7M) | CERF (3.9M) | Sweden (2.5M) | European Union (1.2M) | Canada (1.2M) | France (1.2M) | Private Donors Australia (0.61M) | UNIQLO (0.49M) | UNAIDS (0.17M)

Donors of regional or sub-regional funds 2018

United States of America (81.2M) | Private Donors Australia (8.6M) | Sweden (8.5M) | Germany (5.1M) | Australia (3.8M) | Canada (3.3M) | Private Donors Germany (2.8M) | Norway (2.6M)

Major donors of unrestricted and regional funds in 2018

Sweden (98.2M) | Private Donors Spain (45.2M) | Norway (42.5M) | Netherlands (39.1M) | United Kingdom (31.7M) | Denmark (25.5M) | Private Donors Republic of Korea (22.2M) | Switzerland (15.2M) | France (14M) | Germany (13.7M) | Private Donors Italy (11.9M) | Italy (11.2M) | Private Donors Japan (11.1M)

CONTACTS

Andreas Kirchhof, Senior Regional External Relations Officer DRC, kirchhof@unhcr.org,
Tel: +243 996 041 000, Cell +243 81 700 94 84

Simon Englebert Lubuku, Senior Public Information Associate DRC, lubuku@unhcr.org,
Tel: +243 996 041 000, Cell +243 81 950 02 02

LINKS

[DR Congo Emergency page](#) - [UNHCR DRC operation page](#) - [DRC Facebook page](#) - [UNHCR Story: Surging violence drives thousands of Congolese from their homes](#)