



Inter-Agency
Coordination
Lebanon



Water Sector WaSH Assessment Platform (WAP)

Date: 16.07.2018

Eng. Mahdi Wehbi

Water sector information manager (Consultant)

Agenda

1. WAP overview
2. Baseline Analysis
3. Development Update (WAP 2018)
4. WAP tool

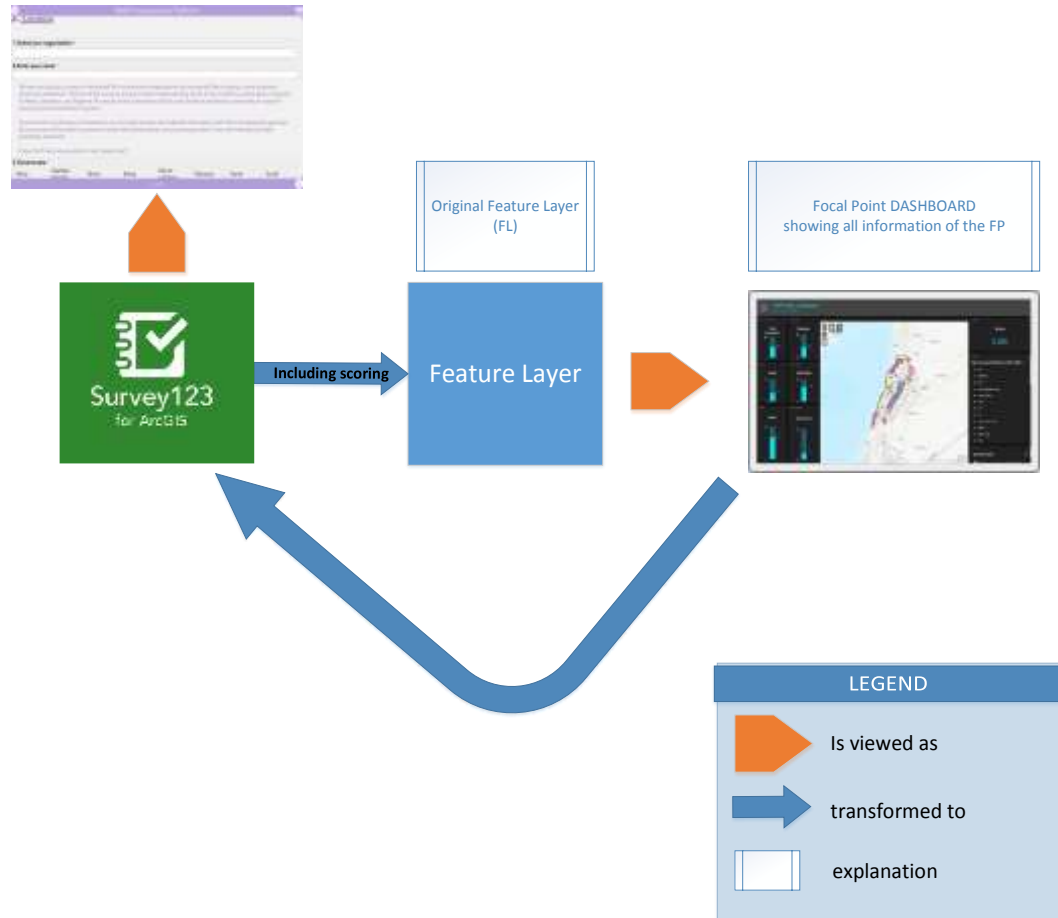
1. WAP tool Overview – objectives

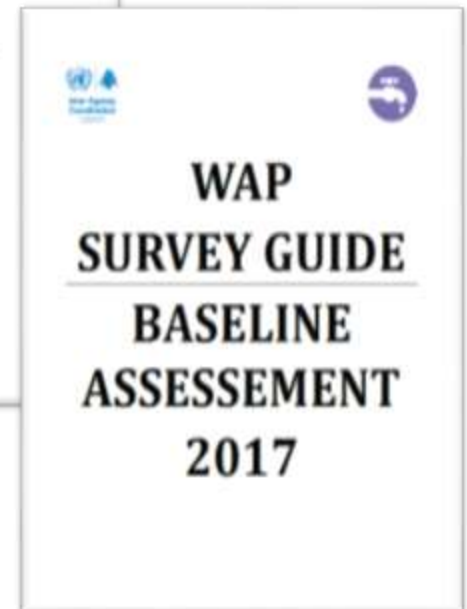
Anticipating a continued reduction in availability of funding, the sector developed an approach for targeting and prioritising its WASH response.

- Based on a number of agreed criteria to determine a site's level of vulnerability;
- Establish a baseline and ranking of all sites in terms of their vulnerability;
- Enable sector partners to ensure that the most critical and urgent WASH needs are met, which reduce the risk of WASH related disease and negative environmental impact, regardless of the level of funding, by prioritising the most vulnerable sites first;
- Enable sector partners to tailor their WASH response to ITSs in a more systematic and harmonised manner;
- Enable measuring the impact of the approach by evaluating ITSs at the end of the period, likely one year, to determine their new vulnerability status;

1. WAP tool Overview – process

- Data Collection
- Scoring
- Hosted feature layer
- Dashboards
- Reviewing by WaSH/IM
- Updating from survey 123





1. WAP tool Overview – scoring

- Social – 10/100
- Water – 30/100
- Sanitation – 25/100
- Solid waste – 16/100
- Environment – 19/100
- Total score (Vulnerability) – 100/100

Social

Water

Sanitation

Solid Waste

Environment

Section	Max score
Water	30
Sanitation	25
Environment	19
Solid Waste	16
Social	10
Total	100

Social	Special Needs	Female-headed households	0.75	3
		Children	0.75	
		Elderly	0.75	
		Physically Disabled	0.75	
	Community Structures	WaSH Structure	1	2
		Community Structure	1	
Water	Crowdedness	Crowdedness (distance)	1	3
		Crowdedness (density)	2	
	Seasonality	Seasonality (quantity)	1	2
		Seasonality (duration)	1	
	Access	Water Storage Capacity	3	15
		Source type	12	
	Availability	Quantity when accessed	4	9
		Frequency of access	2	
		Seasonality	3	
Sanitation	Quality	Fecal Coliform	4.5	6
		Turbidity	0.75	
		Nitrates	0.75	
	Access	Latrine access (structures)	9	12
		Latrine access (expansion)	3	
	Wastewater Disposal	Grey Water Disposal	2	11
		Black Water Disposal	3	
		Desludging (frequency)	3	
		Desludging (seasonality)	3	
Solid Waste	Treatment	On-site treatment	2	2
		Storage	6	
	Handling	Collection waste score	3	10
		Collection freq. score	3	
		Cost_burden_score	4	

	Weight	Criterion	Description
Social	0.75	Female_headed_score	#FemaleHeadedHouseholds/Households [0 scores 0 40+ scores 100 Between 0 & 40 scores 0 to 100 (linear)]
		Children_score	#Children/Individuals 25+ scores 0 75+ scores 100 Between 25 & 75 scores 0 to 100 (linear)
		Elderly_score	#Elderly/Individuals 0 scores 0 10+ scores 100 Between 0 & 10 scores 0 to 100 (linear)
		Physically_disabled_score	#Disabled/Individuals 0 scores 0 10+ scores 100 Between 0 & 10 scores 0 to 100 (linear)
	1	WaSH_structure_score	Selection Yes scores 0 No scores 100
	1	Community_structure_score	Selection Yes scores 0 No scores 100
	1	Crowdedness_distance_score	Selection [anythan2 scores 100 2to4 scores 50 Morethan4 scores 0]
	2	Crowdedness_density_score	#Households/Refugees 100+ scores 0 200+ scores 100 Between 100 & 200 scores 0 to 100 (linear)
	1	Seasonality_quantity_score	#Seasonal/Households/Households Between 0 & 100 scores 0 to 100 (linear)
	1	Seasonality_duration_score	#Months/6 Between 0 & 100 scores 0 to 100 (linear)
	10	Social_Score	Sum of All Above

Restrictions:

- 1- Script must not run for empty sites (It should scores "Null" or write "empty site" in all scores)
- 2- If #Households = 0 ⇒ Female_headed_score = 0
- 3- Social_Score to be rounded to nearest hundredth

1. WAP tool Overview – scoring

Total

		Weight	Criterion	Description
Total Score	100	100	Total_Score	Social_Score+Water_Score+Sanitation_Score+SolidWaste_Score+Environment_Score

1. WAP tool Overview – hosted feature layer and dashboard



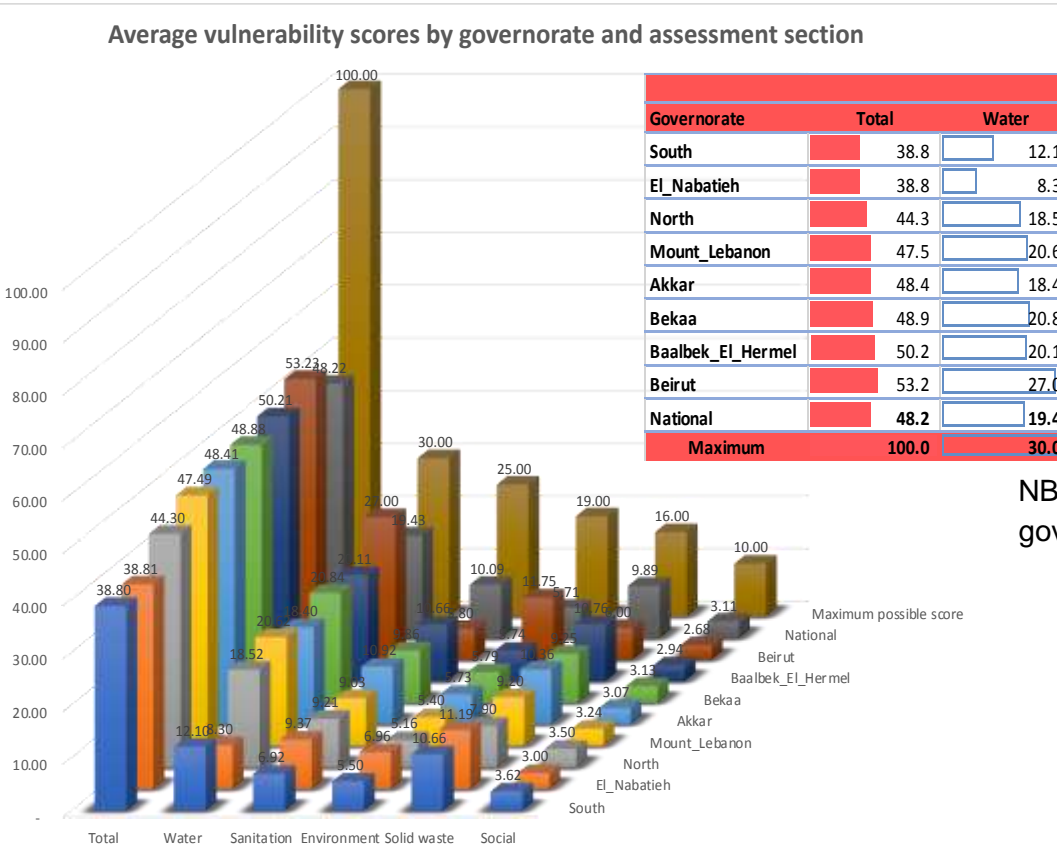
2. Baseline analysis

- The report summarizes the findings and analysis of the baseline data collected in the 1st assessment of WAP.
- Baseline data is considered as the first extraction at the end line of the assessment. It was on 27.12.2017.



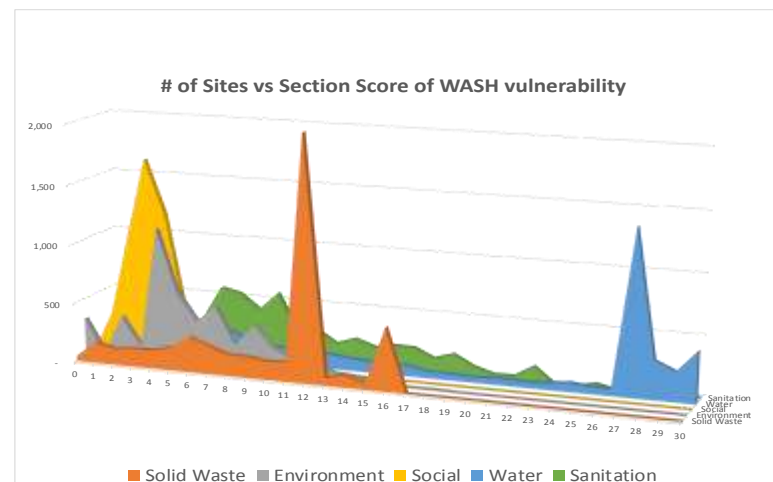
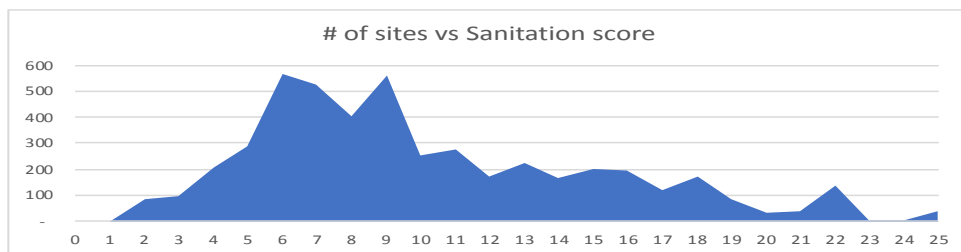
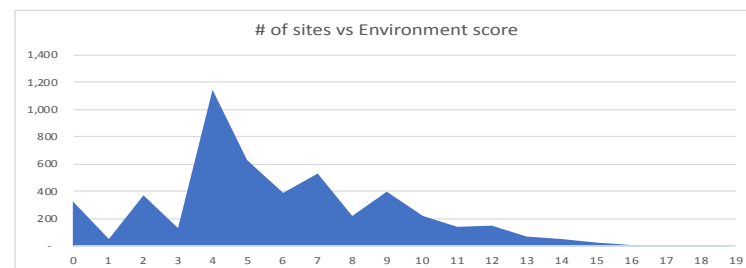
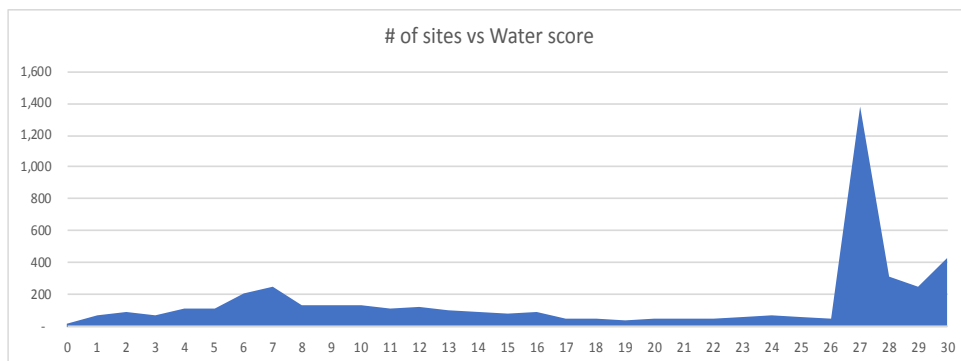
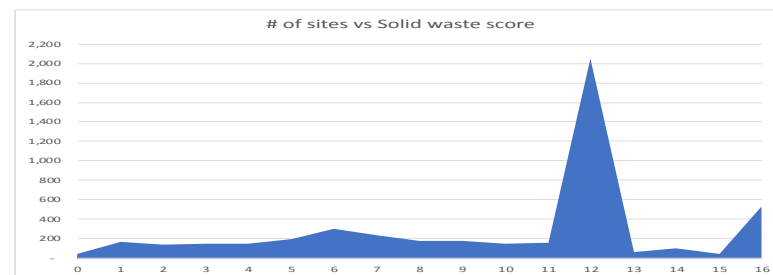
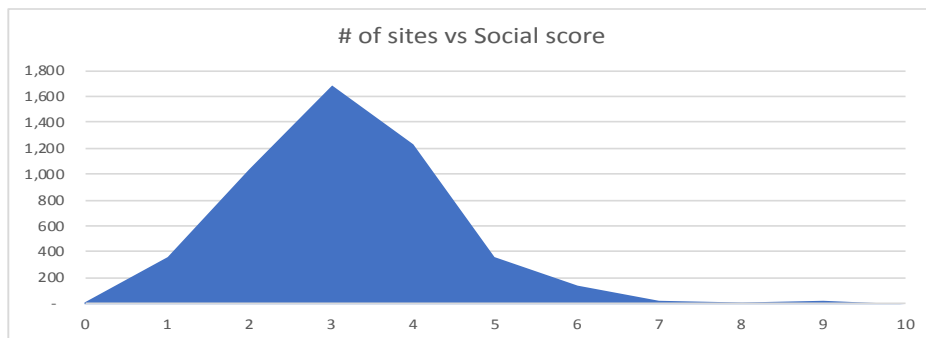
- 6 key findings which are elaborated in 6 different sections. Location, social, water, sanitation, solid waste and environment. In each section, most of the questions are analyzed. Errors and data limitations are noted where relevant.
- In addition to the findings, recommendations were made to rectify errors found in the process of compiling the raw collected data by applying data verification methods such as 3rd party monitoring and the increased automation of the process in order to reduce the room for human error.

2. Baseline analysis – WASH Vulnerability Scores



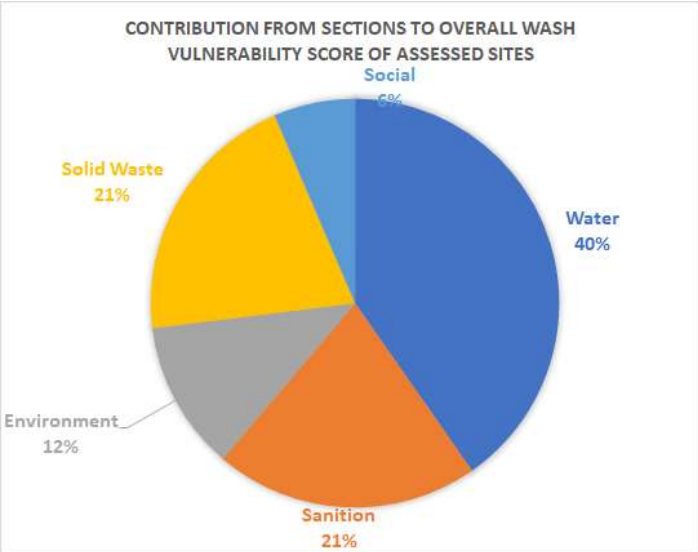
NB: Beirut governorate has only one site giving it the highest governorate WASH vulnerability score of 53.2.

2. Baseline analysis – WASH Vulnerability Scores



2. Baseline analysis – WASH Vulnerability Scores

WASH vulnerability of site	Quintile	#sites	# households	# individuals	Min Score	Max Score
Severe	1	975	12,170	66,064	60.1	86.6
High	2	971	14,889	77,282	53.0	60.1
Moderate	3	973	13,847	74,036	45.4	53.0
Low	4	975	10,705	52,851	35.3	45.4
Very low	5	973	8,803	43,784	9.6	35.2
Totals		4,867	60,414	314,017	9.6	86.6



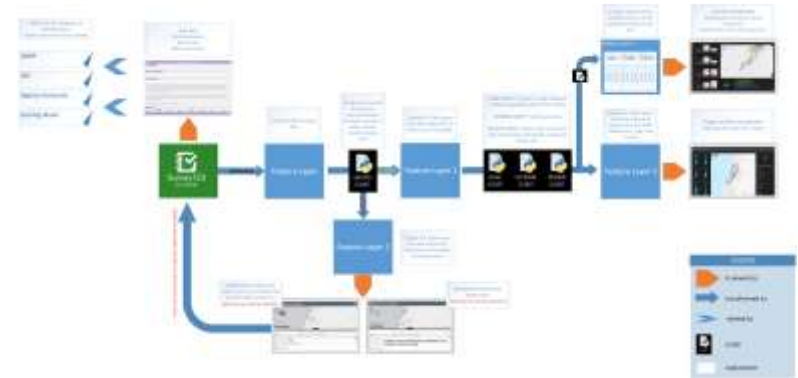
# of sites per governorate per WASH vulnerability category						
WASH vulnerability	Severe	High	Moderate	Low	Very low	
Quintile	1	2	3	4	5	Totals
Baalbek_El_Hermel	314	320	306	260	210	1,410
Bekaa	277	374	381	333	252	1,617
Akkar	249	148	151	193	219	960
North	50	66	54	80	106	356
Mount_Lebanon	42	41	52	55	48	238
South	37	16	22	40	99	214
El_Nabatieh	6	5	7	14	39	71
Totals	975	970	973	975	973	4,866

3. Development Update

- Errors and data limitations were noted where relevant;
- Recommendations were made;
 - ✓ It is crucial to ensure the data received is accurate and verified;
 - ✓ Process is streamlined and automated;
 - ✓ Monitoring and evaluation; etc..

3. Development Update – specialty

- Errors are almost non-existent
- If any errors (detected using special dashboard)
- Logical relationship between fields
- Synchronized (related to each other) in all directions.
- More operational dashboards
- Trends and analysis



```
special_ref = query_result.spatial_reference
features_for_update = []

for feat in query_dict['features']:
    entry = feat['attributes']
    objectid = entry['objectid']

    original_feature = [f for f in all_features if f.attributes['objectid'] == objectid]
    feature_to_be_updated = deepcopy(original_feature)

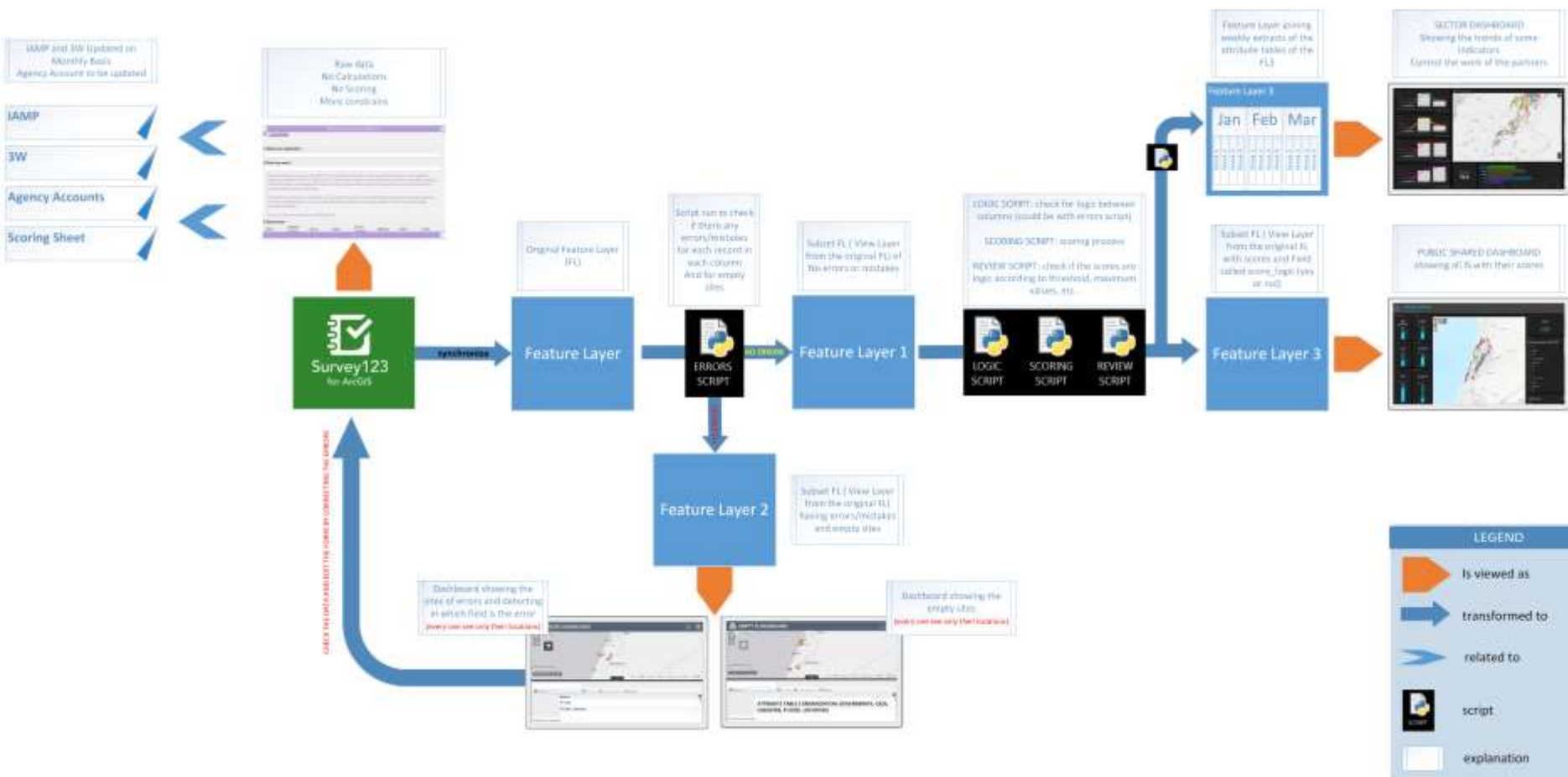
    female_hh = entry['What_is_the_number_of_headed_households']
    assert(type(female_hh) is int)

    total_hh = entry['HH']
    assert(type(total_hh) is int)

    score = float(female_hh)/float(total_hh)
    if score > 40:
        score = 100
    else:
        score = (score/float(40)) * 100
    score*=float(0.75)

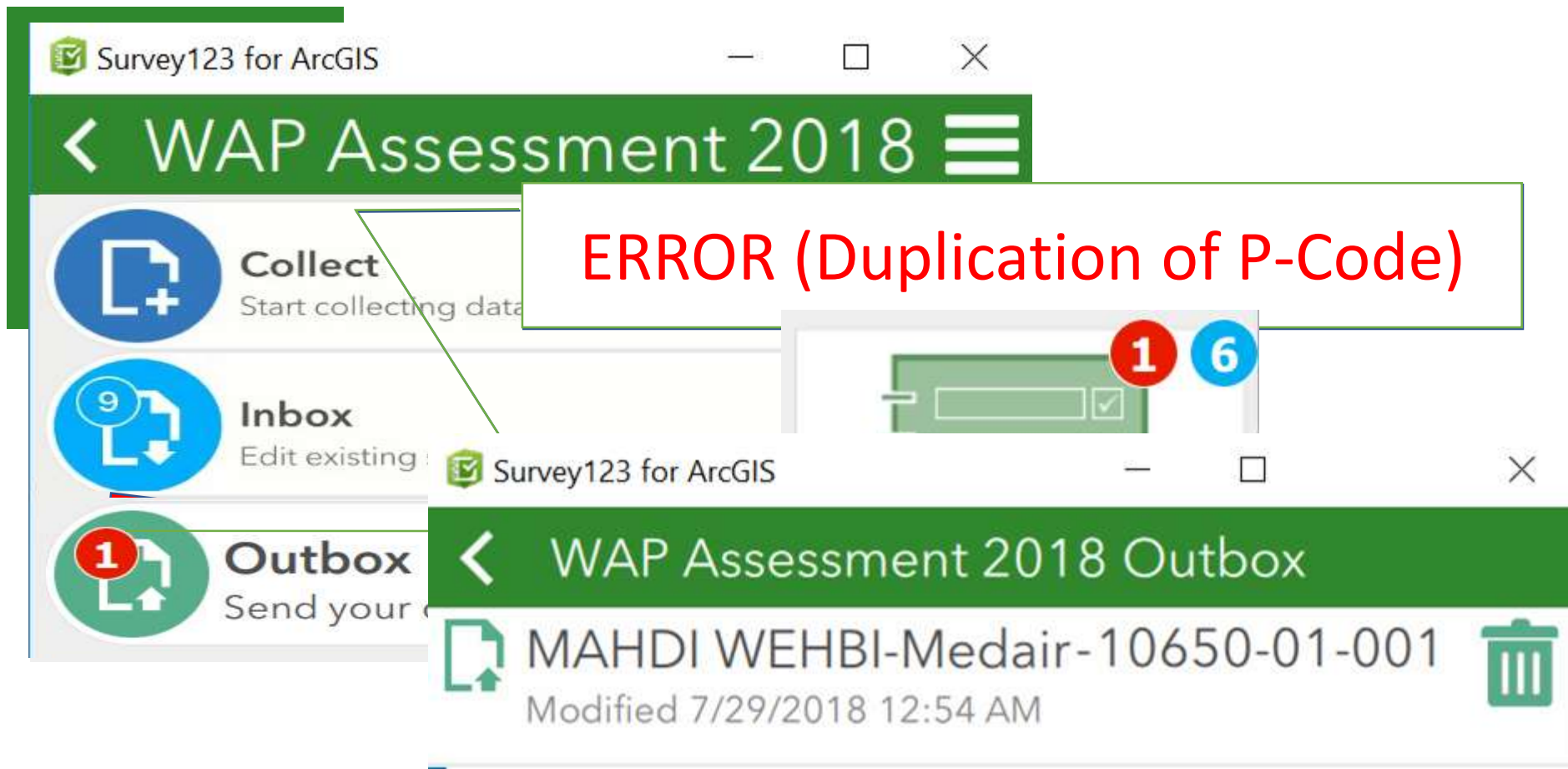
    print(score)

    feature_to_be_updated.attributes['Female_headed_score'] = score
```



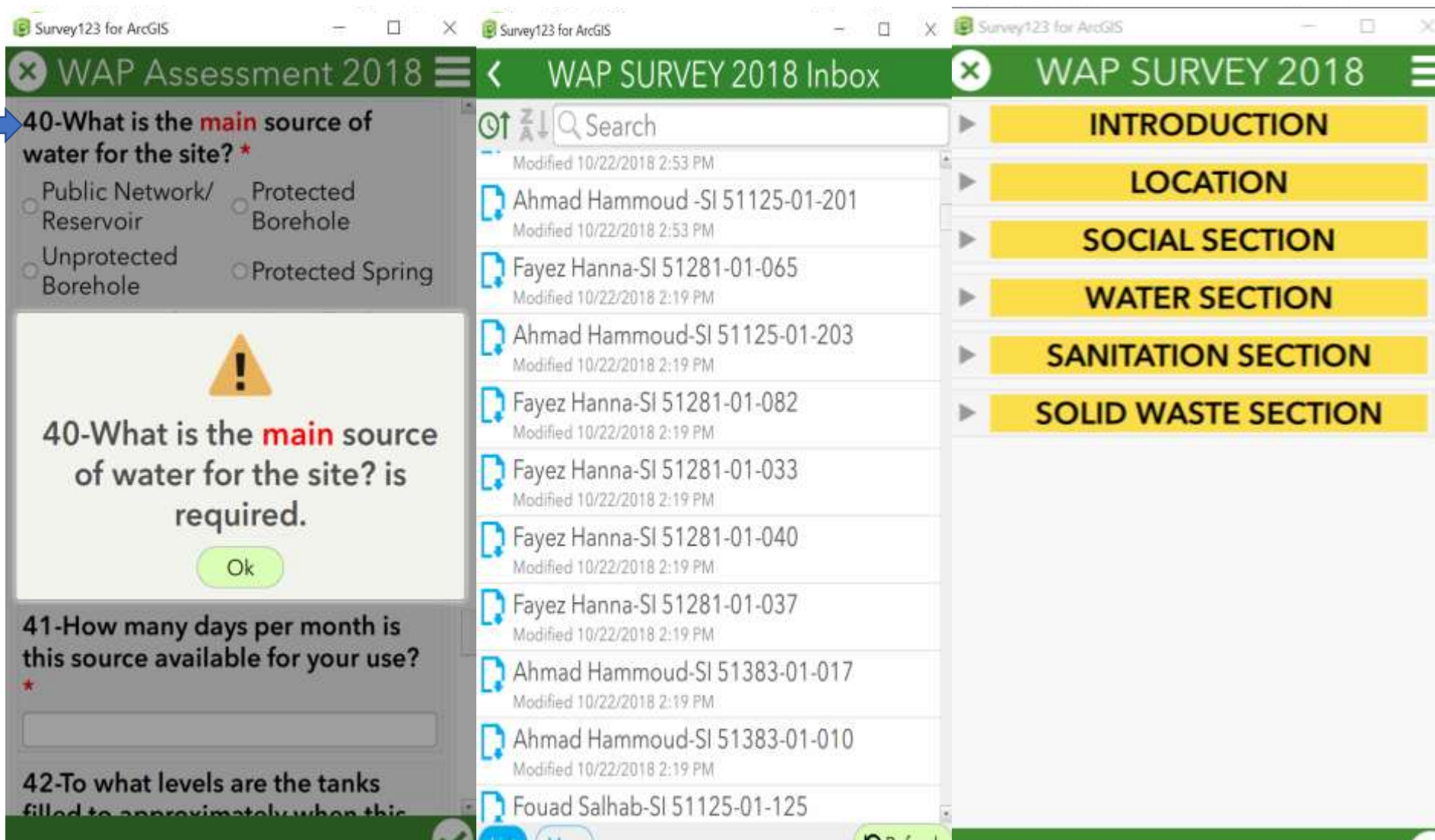
4. WAP tool – (Survey 123)

- WAP survey 123 has been finalized and uploaded on arcgis online. It has been shared for testing.



The screenshot displays the Survey123 for ArcGIS mobile application interface. The main screen is titled "WAP Assessment 2018" and features three primary action buttons: "Collect" (Start collecting data), "Inbox" (Edit existing), and "Outbox" (Send your data). A red circle with the number "1" is overlaid on the "Outbox" button. A green box highlights the "Inbox" button, with a red arrow pointing to a red text box that reads "ERROR (Duplication of P-Code)". Below the "Inbox" button, a smaller window titled "WAP Assessment 2018 Outbox" is visible, showing a list of survey records. The first record is "MAHDI WEHBI-Medair-10650-01-001", which has a red circle with the number "1" and a blue circle with the number "6" next to it. The record is marked as "Modified 7/29/2018 12:54 AM".

4. WAP tool – (Survey 123)



The screenshot displays the Survey123 for ArcGIS interface, which is divided into three main sections:

- Left Panel (Survey Form):**
 - Question 40:** "What is the **main** source of water for the site? *". It features four radio button options: "Public Network/Reservoir", "Protected Borehole", "Unprotected Borehole", and "Protected Spring".
 - Warning Message:** A yellow box with a warning icon states: "40-What is the **main** source of water for the site? is required." with an "Ok" button.
 - Question 41:** "How many days per month is this source available for your use? *". It includes a text input field.
 - Question 42:** "To what levels are the tanks filled to approximately when this..." (partially visible).
- Middle Panel (WAP SURVEY 2018 Inbox):**
 - A search bar at the top.
 - A list of survey entries, each with a document icon, a name, a unique ID, and a modification timestamp (all dated 10/22/2018):
 - Ahmad Hammoud-SI 51125-01-201
 - Fayez Hanna-SI 51281-01-065
 - Ahmad Hammoud-SI 51125-01-203
 - Fayez Hanna-SI 51281-01-082
 - Fayez Hanna-SI 51281-01-033
 - Fayez Hanna-SI 51281-01-040
 - Fayez Hanna-SI 51281-01-037
 - Ahmad Hammoud-SI 51383-01-017
 - Ahmad Hammoud-SI 51383-01-010
 - Fouad Salhab-SI 51125-01-125
- Right Panel (WAP SURVEY 2018):**
 - A navigation menu with yellow buttons for different sections: "INTRODUCTION", "LOCATION", "SOCIAL SECTION", "WATER SECTION", "SANITATION SECTION", and "SOLID WASTE SECTION".

4. WAP tool – (Error detecting, constrains and logics)

- Errors detected including logics has been solved in survey 123 form using constrains and regex.
- Error detecting script to double-check the errors in arcgis online.

Example:

Do you have water Quality tests ? Yes, No

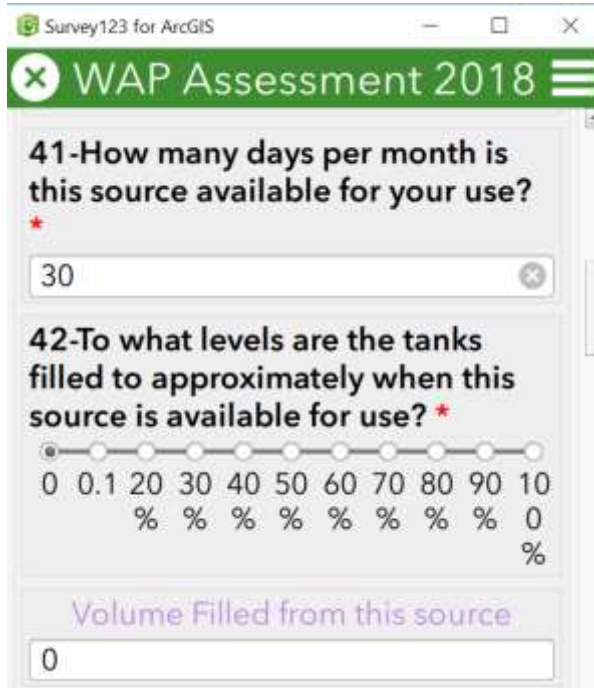
If yes, please enter the figures.

☺ Validated using Survey 123

☹ Not Validated if changed on the server

4. WAP tool – (Scoring script)

- “scoring script” including mathematical error detecting and recalculation of Fields



Survey123 for ArcGIS

WAP Assessment 2018

41-How many days per month is this source available for your use? *

30

42-To what levels are the tanks filled to approximately when this source is available for use? *

0 0.1 20 30 40 50 60 70 80 90 100 % % % % % % % % % %

Volume Filled from this source

0

- Volume Filled from this source
 - To what level * Total Volume
 - Change from 0 to 50%
 - No need to change the result (Volume filled...)
 - ✓ Recalculated by the script
-
- Total Volume Solid Bins
 - How_many_1200L_bins*1200+ 1000L *1000 + etc...
 - Distributing additional bins for the site
 - No need to change the result (Total Bins)
 - ✓ Recalculated by the script

1. WAP tool – (external data)

- Survey 123 now is related to external files
 - ✓ IAMP file
 - ✓ 3W file
 - ✓ HCMT

	A	B	C	D	E	G	H	I	J	K
1	Pcode	Pcode_Name	Governorate	District	Cadaster	Agency	Donor	Funded_until		
2	10650-01-001	Achrafieh foncière 001	Beirut	Beirut	Achrafieh foncière	BLANK	BLANK	BLANK		
3	21133-01-001	Furn Ech-Chebbak 001	Mount Lebanon	Baabda	Furn Ech-Chebbak	BLANK	BLANK	BLANK		
4	21133-01-002	Furn Ech-Chebbak 002	Mount Lebanon	Baabda	Furn Ech-Chebbak	BLANK	BLANK	BLANK		
5	21211-01-001	Baabda 001	Mount Lebanon	Baabda	Baabda	BLANK	BLANK	BLANK		
6	21394-01-001	Salima Baabda 001	Mount Lebanon	Baabda	Salima Baabda	BLANK	BLANK	BLANK		
7	22111-01-001	Bourj Hammoud 001	Mount Lebanon	El Metn	Bourj Hammoud	BLANK	BLANK	BLANK		
8	22111-01-002	Bourj Hammoud 002	Mount Lebanon	El Metn	Bourj Hammoud	BLANK	BLANK	BLANK		
9	22155-01-001	Sinn El-Fil 001	Mount Lebanon	El Metn	Sinn El-Fil	BLANK	BLANK	BLANK		
10	22335-01-001	Naqqach 001	Mount Lebanon	El Metn	Naqqach	BLANK	BLANK	BLANK		
11	22335-01-002	Naqqach 002	Mount Lebanon	El Metn	Naqqach	BLANK	BLANK	BLANK		
12	22423-01-001	Aain Saadé 001	Mount Lebanon	El Metn	Aain Saadé	BLANK	BLANK	BLANK		

4. WAP tool – (monitoring and evaluation)

- MEWAP team (Monitoring and Evaluation)
- MEWAP team were given advanced
- Each member representing an agency
- Each Agency is being monitored by the



Inter-Agency Coordination Lebanon

MEWAP Field Reports
Weekly report

Date/time: 10.Oct.2018
Governorate: South, Baalbeck-Hermel, North, Bekaa, Akkar
Monitored Agencies: DPNA, GVC, Leb-Relief, LRC, Medair, NRC, Oxfam, SI

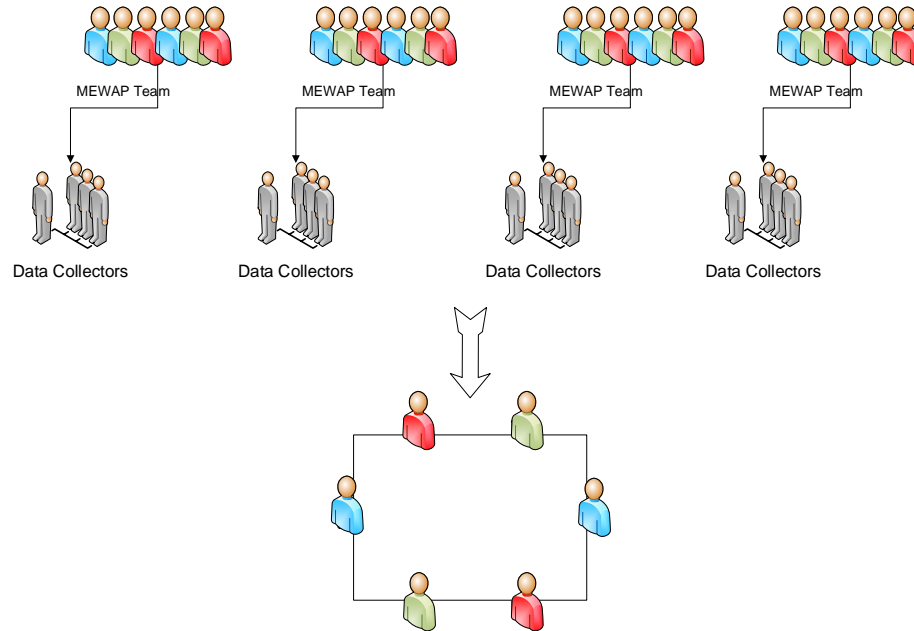
1. Survey 123: Numerators are filling the form in correct manner

Agency	Yes	No, Small mistakes, corrected directly
DPNA	X	
GVC	X	
Leb-Relief		X
LRC	X	
Medair	X	
NRC	X	
Oxfam	X	
SI	X	
MC	X	
WVI		X

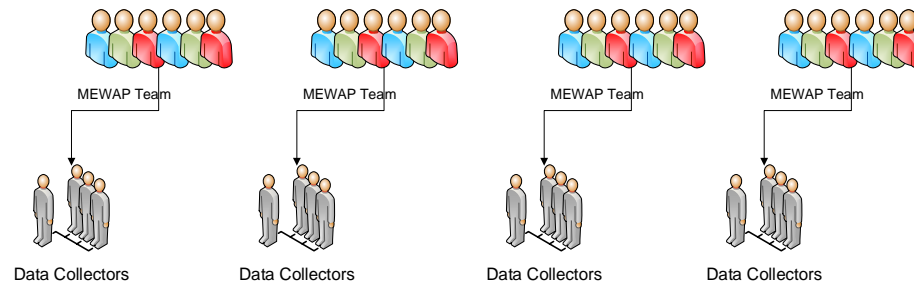
If No. Type of mistakes:

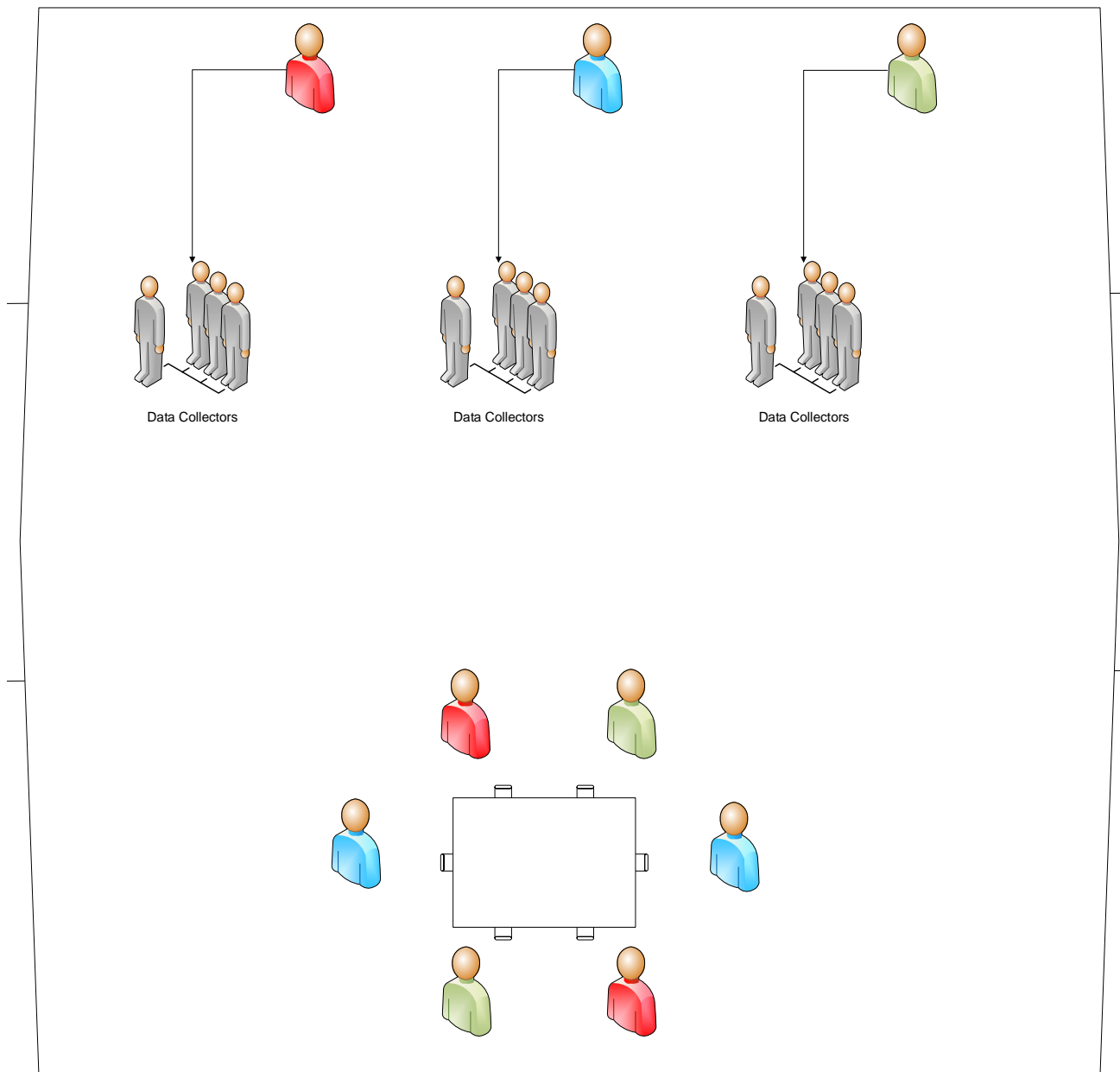
Agency	Mistakes
DPNA	
GVC	
Leb-Relief	- Some sites were not visually observed. - The enumerator didn't know how to check for the grey water system - Regarding "How many Children" the enumerator didn't specify (be...) - Poor knowledge concerning type of Black water system (SI uses Sca... tanks system)
LRC	
Medair	
NRC	
Oxfam	
SI	
MC	
WVI	- In Talia 009: In question # 58 "when desludging trucks cannot acc...

1st Visit: Monitor
and validate the
numerator's
work



2nd Visit: re-assess
some sites





4. WAP tool – (Dashboards)

Partners

- [Partners Dashboard](#) (WaSH, IM, GIS)
- [Gaps finder Dashboard](#) (WAP focal points)
- Error Detecting Dashboard (pending..) (MEWAP and WAP focal points)
- MEWAP Dashboard (temporary) (MEWAP focal points)

IAMP

- [IAMP reporting Dashboard](#) (pending..) (IAMP team) – [Status.xls](#)

Public

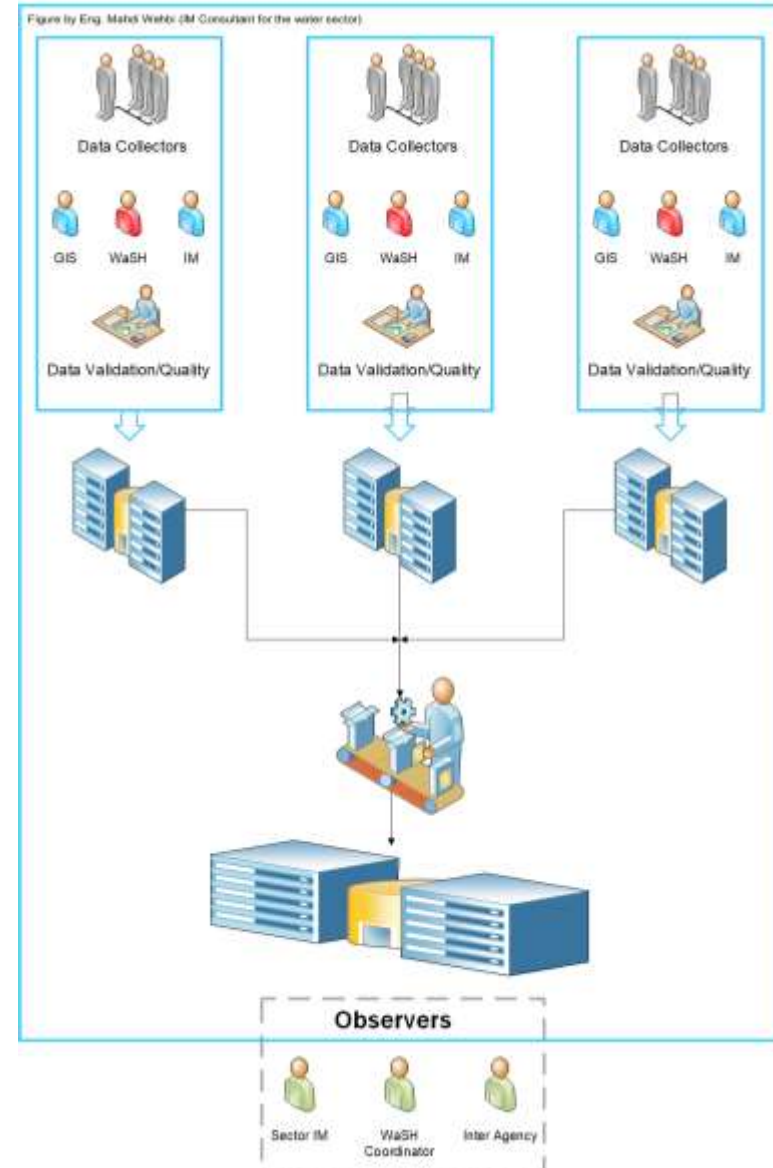
- [WAP Public Dashboard](#)
- Trends Dashboard (pending..)

4. WAP tool – (Handover sites)

- Simple tool in [Partners Dashboard](#)
- Validated by partners through 3W file
- Validated by Water Sector IM
- DONE !

4. WAP tool – (assessment)

- ❑ Summary of WAP process starting from data collection.
- ❑ Parties involved and the process of assessment.
- ❑ 2nd assessment starts on 17 of September and will end on 12 of December.
- ❑ Updating should be done on activity-basis. (Deadline for updating data and extraction - 6month)





Inter-Agency
Coordination
Lebanon



4. WAP tool – (workplan)



Inter-Agency
Coordination
Lebanon



2018

SEPTEMBER						
S	M	T	W	T	F	S
26	27	28	29	30	31	1
2	3	4	5	6	7	8
9	10	11	12	13	14	15
16	17	18	19	20	21	22
23	24	25	26	27	28	29
30	1	2	3	4	5	6

OCTOBER						
S	M	T	W	T	F	S
30	1	2	3	4	5	6
7	8	9	10	11	12	13
14	15	16	17	18	19	20
21	22	23	24	25	26	27
28	29	30	31	1	2	3
4	5	6	7	8	9	10

NOVEMBER						
S	M	T	W	T	F	S
28	29	30	31	1	2	3
4	5	6	7	8	9	10
11	12	13	14	15	16	17
18	19	20	21	22	23	24
25	26	27	28	29	30	1
2	3	4	5	6	7	8

DECEMBER						
S	M	T	W	T	F	S
25	26	27	28	29	30	1
2	3	4	5	6	7	8
9	10	11	12	13	14	15
16	17	18	19	20	21	22
23	24	25	26	27	28	29
30	31	1	2	3	4	5

Legend	
	WAP Assessment 2018
	MEWAP Field Visit
	MEWAP Reporting
	WAP Analysis
	Data Review
	MEWAP Coordination meeting
	1st WAP Extraction
	2nd WAP Extraction

2019

JANUARY						
S	M	T	W	T	F	S
30	31	1	2	3	4	5
6	7	8	9	10	11	12
13	14	15	16	17	18	19
20	21	22	23	24	25	26
27	28	29	30	31	1	2
3	4	5	6	7	8	9

FEBRUARY						
S	M	T	W	T	F	S
27	28	29	30	31	1	2
3	4	5	6	7	8	9
10	11	12	13	14	15	16
17	18	19	20	21	22	23
24	25	26	27	28	1	2
3	4	5	6	7	8	9

MARCH						
S	M	T	W	T	F	S
24	25	26	27	28	1	2
3	4	5	6	7	8	9
10	11	12	13	14	15	16
17	18	19	20	21	22	23
24	25	26	27	28	29	30
31	1	2	3	4	5	6

APRIL						
S	M	T	W	T	F	S
31	1	2	3	4	5	6
7	8	9	10	11	12	13
14	15	16	17	18	19	20
21	22	23	24	25	26	27
28	29	30	1	2	3	4
5	6	7	8	9	10	11

Holidays and Observances	
1-Jan	New Year
9-Feb	St Maron's Day
9-Mar	Teachers' Day
21-Mar	Mother's Day
25-Mar	Feast of the Annunciation
19-Apr	Good Friday
22-Apr	Easter Sunday
22-Apr	Easter Monday
26-Apr	Orthodox Good Friday
28-Apr	Orthodox Easter Day
1-May	Worker's Day
6-May	Martyr's Day
25-May	Liberation and Resistance Day
30-May	Ascension Day
12-Aug	Eid al-Adha
15-Aug	Feast of the Assumption
1-Sep	Muharram
8-Sep	Nativity of Mary
9-Sep	First Day of Ashura
1-Nov	All Saints' Day
10-Nov	The Prophet's Birthday
22-Nov	Independence Day
25-Dec	Christmas Day

Dates are subject to change

MAY						
S	M	T	W	T	F	S
28	29	30	1	2	3	4
5	6	7	8	9	10	11
12	13	14	15	16	17	18
19	20	21	22	23	24	25
26	27	28	29	30	31	1
2	3	4	5	6	7	8

JUNE						
S	M	T	W	T	F	S
26	27	28	29	30	31	1
2	3	4	5	6	7	8
9	10	11	12	13	14	15
16	17	18	19	20	21	22
23	24	25	26	27	28	29
30	1	2	3	4	5	6

JULY						
S	M	T	W	T	F	S
30	1	2	3	4	5	6
7	8	9	10	11	12	13
14	15	16	17	18	19	20
21	22	23	24	25	26	27
28	29	30	31	1	2	3
4	5	6	7	8	9	10

AUGUST						
S	M	T	W	T	F	S
28	29	30	31	1	2	3
4	5	6	7	8	9	10
11	12	13	14	15	16	17
18	19	20	21	22	23	24
25	26	27	28	29	30	31
1	2	3	4	5	6	7

SEPTEMBER						
S	M	T	W	T	F	S
1	2	3	4	5	6	7
8	9	10	11	12	13	14
15	16	17	18	19	20	21
22	23	24	25	26	27	28
29	30	1	2	3	4	5
6	7	8	9	10	11	12

OCTOBER						
S	M	T	W	T	F	S
29	30	1	2	3	4	5
6	7	8	9	10	11	12
13	14	15	16	17	18	19
20	21	22	23	24	25	26
27	28	29	30	31	1	2
3	4	5	6	7	8	9

NOVEMBER						
S	M	T	W	T	F	S
27	28	29	30	31	1	2
3	4	5	6	7	8	9
10	11	12	13	14	15	16
17	18	19	20	21	22	23
24	25	26	27	28	29	30
1	2	3	4	5	6	7

DECEMBER						
S	M	T	W	T	F	S
1	2	3	4	5	6	7
8	9	10	11	12	13	14
15	16	17	18	19	20	21
22	23	24	25	26	27	28
29	30	31	1	2	3	4
5	6	7	8	9	10	11



Inter-Agency
Coordination
Lebanon



THANK YOU!

Q&A

“The value of information management is never for its own sake, but to provide insight and make a leap of innovation.”

Pearl Zhu

“Water is the driving force of all nature”

Leonardo da Vinci

