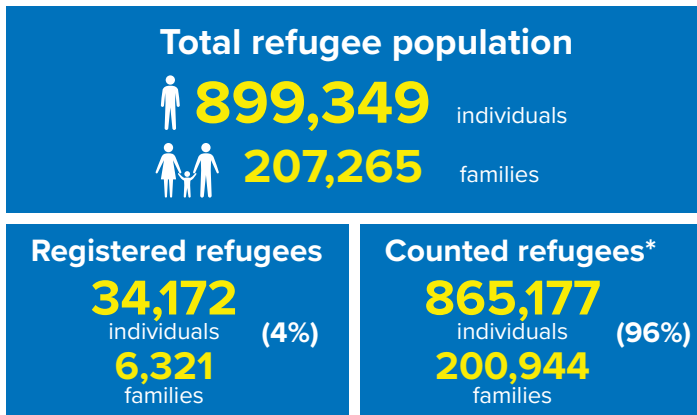
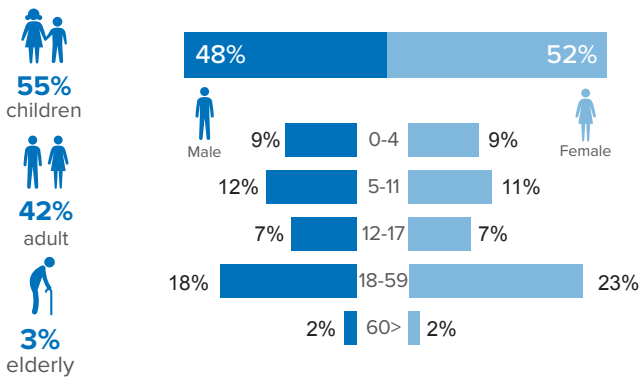


## Refugee population figure

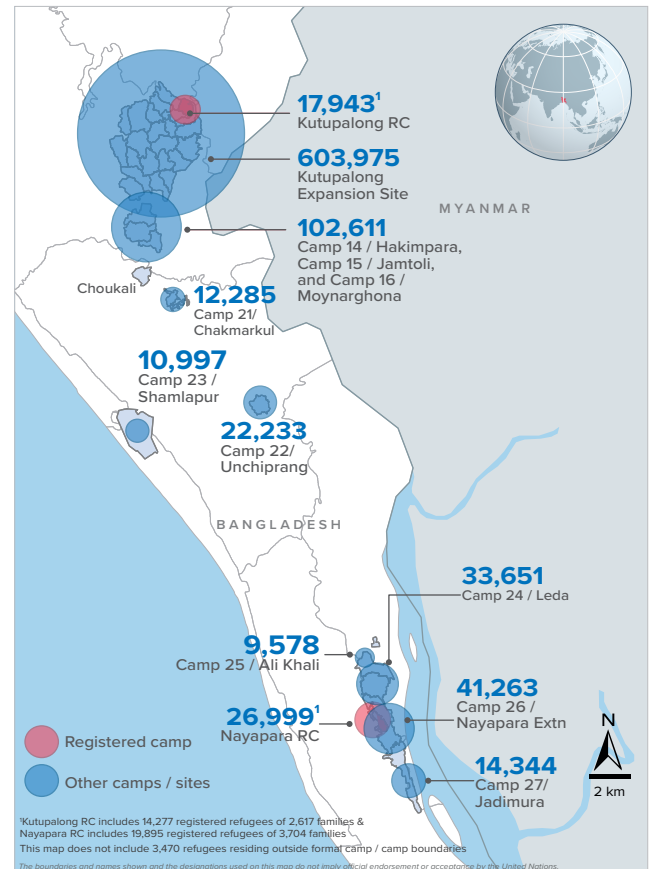


\* Some refugees living in host communities and in certain locations beyond the camp boundaries may not have been counted.

## Demography

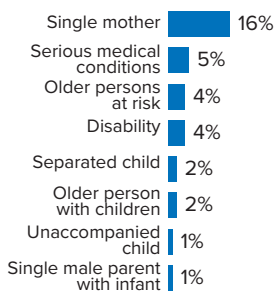


## Refugee population density



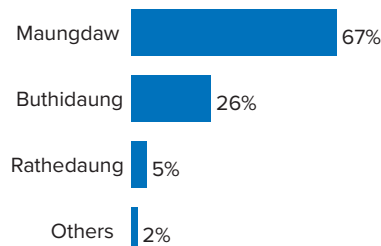
## Specific needs

**31%** of the families have been identified with at least one protection vulnerability\*



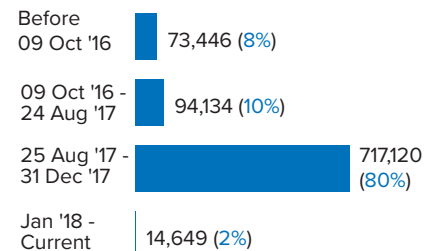
## Place of origin

**67%** of the Rohingya refugees comes from Maungdaw Township



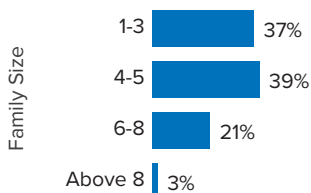
## Period of arrival

**80%** of current population arrived between Aug. and Dec 2017



## Family size breakdown

**39%** of the families have a standard family size of 4-5 persons



## Linking exercise

The Linking Exercise, conducted from December 2017 until February 2018, was a collaborative effort between the Government of Bangladesh and the United Nations High Commissioner for Refugees that aimed to merge the family based Rohingya population data collected through the Family Counting Exercise with attributes of the individual Rohingya population data collected by the Ministry of Home Affairs.

The exercise was conducted with a view to creating a unified dataset with individual data grouped into families which will be used to better protect and assist families.

\*Figures are the percentage of total families with at least one person with a specific need. More than one specific need may be present within one family.

## Age and gender breakdown by camp/site

Camp	Infant female below 1	Infant male below 1	1-4 Children female	1-4 Children male	5-11 Children female	5-11 Children male	12-17 Children female	12-17 Children male	18-59 Adult female	18-59 Adult male	60+ Elderly female	60+ Elderly male	Total Families	Total Individuals
Camp 15	946	892	3,533	3,686	5,304	5,468	3,419	3,603	11,506	9,176	905	904	11,153	49,342
Camp 13	713	761	3,076	3,173	4,481	4,740	2,760	2,835	9,717	7,692	740	681	9,696	41,369
Camp 26	698	619	3,143	3,161	4,771	5,242	2,984	2,785	9,861	6,802	639	558	9,450	41,263
Camp 1W	753	747	2,905	2,905	4,379	4,439	2,667	2,756	9,510	7,643	854	750	9,306	40,308
Camp 1E	668	736	2,817	2,983	4,292	4,518	2,661	2,776	9,371	7,795	796	697	9,239	40,110
Camp 3	679	730	2,974	3,081	4,117	4,333	2,470	2,654	9,235	7,219	692	582	9,015	38,766
Camp 7	698	705	2,972	3,088	4,196	4,397	2,611	2,562	9,050	7,101	719	642	9,214	38,741
Camp 9	628	567	2,797	2,802	3,997	4,060	2,495	2,487	8,570	6,926	712	692	8,672	36,733
Camp 24	509	522	2,285	2,500	4,040	4,159	2,315	2,410	8,027	5,919	545	420	7,783	33,651
Camp 10	629	620	2,581	2,714	3,396	3,752	2,145	2,082	7,783	6,107	598	523	7,636	32,930
Camp 8W	551	526	2,621	2,571	3,430	3,639	2,041	2,149	7,654	6,113	607	536	7,471	32,438
Camp 8E	503	501	2,264	2,352	3,398	3,449	2,324	2,249	7,391	5,935	546	557	7,254	31,469
Camp 14	554	583	2,300	2,530	3,359	3,714	2,248	2,237	7,231	5,784	598	522	6,975	31,660
Camp 4	578	618	2,407	2,547	3,555	3,711	2,054	2,044	7,557	5,910	521	401	7,843	31,903
Camp 11	542	574	2,347	2,373	3,354	3,558	2,129	2,194	7,214	5,899	538	496	7,082	31,218
Camp 2E	550	516	2,258	2,310	3,283	3,545	1,777	1,844	7,126	5,359	516	438	7,106	29,522
Nayapara RC*	87	90	1,556	1,628	2,921	3,005	2,305	2,364	7,163	5,019	447	414	5,723	26,999
Camp 18	466	495	2,198	2,240	2,877	2,991	1,797	1,691	6,396	4,998	356	363	6,561	26,868
Camp 2W	417	419	1,890	1,996	2,863	3,128	1,565	1,587	5,981	4,712	486	377	5,824	25,421
Camp 5	437	475	1,948	2,043	2,754	2,817	1,540	1,633	5,913	4,604	460	414	6,009	25,038
Camp 6	510	452	1,994	2,104	2,690	2,853	1,455	1,555	5,765	4,524	430	393	5,763	24,725
Camp 12	378	367	1,644	1,747	2,423	2,690	1,631	1,587	5,237	4,072	420	366	5,003	22,562
Camp 22	411	382	1,598	1,796	2,548	2,619	1,677	1,673	4,848	3,969	378	334	4,590	22,233
Camp 16	433	398	1,592	1,679	2,331	2,546	1,519	1,432	4,971	3,999	385	324	4,832	21,609
Camp 19	337	321	1,593	1,672	2,243	2,498	1,428	1,469	4,844	3,770	347	288	4,812	20,810
Kutupalong RC*	77	58	1,014	1,154	1,915	2,047	1,475	1,424	4,577	3,688	267	247	3,529	17,943
Camp 17	247	294	1,343	1,338	1,781	1,854	1,000	985	3,773	2,890	233	230	3,766	15,968
Camp 27	242	217	1,101	1,156	1,681	1,718	1,032	1,068	3,327	2,396	219	187	3,168	14,344
Camp 21	228	213	908	966	1,345	1,412	760	800	2,965	2,369	184	135	3,014	12,285
Camp 23	181	200	810	847	1,455	1,494	634	653	2,695	1,696	171	161	2,669	10,997
Camp 25	141	159	715	708	1,119	1,199	748	693	2,227	1,588	168	113	2,160	9,578
Camp 20	126	139	572	653	801	859	414	450	1,816	1,336	125	99	1,786	7,390
Camp 4 Extension	105	101	433	485	627	642	322	300	1,338	1,044	83	75	1,344	5,555
Camp 20 Extension	84	73	338	353	438	451	246	240	1,001	799	59	49	1,014	4,131
No camp**	67	59	257	277	398	412	228	243	798	624	56	51	803	3,470
<b>Total</b>	<b>15,173</b>	<b>15,129</b>	<b>66,784</b>	<b>69,618</b>	<b>98,562</b>	<b>103,959</b>	<b>60,876</b>	<b>61,514</b>	<b>212,438</b>	<b>165,477</b>	<b>15,800</b>	<b>14,019</b>	<b>207,265</b>	<b>899,349</b>

\*Kutupalong RC includes 14,277 registered refugees of 2,617 families & Nayapara RC includes 19,895 registered refugees of 3,704 families

\*\*This represents refugees residing outside formal camp boundaries

## Population figures by period of arrival

Arrival Period	Before 09 Oct 2016		09 Oct 2016 - 24 Aug 2017		25 Aug 2017 - 31 Dec 2017		01 Jan 2018 - Current date		Total Families	Total Individuals
Camp	Total Families	Total Individuals	Total Families	Total Individuals	Total Families	Total Individuals	Total Families	Total Individuals		
Camp 15	11	47	765	3,394	10,371	45,874	6	27	11,153	49,342
Camp 13	12	48	787	3,443	8,856	37,720	41	158	9,696	41,369
Camp 26	72	352	829	3,686	8,112	35,334	437	1,891	9,450	41,263
Camp 1W	23	89	1,038	4,465	8,221	35,675	24	79	9,306	40,308
Camp 1E	42	189	1,636	7,034	7,528	32,765	33	122	9,239	40,110
Camp 3	26	118	964	4,208	7,989	34,301	36	139	9,015	38,766
Camp 7	126	553	1,077	4,642	7,945	33,268	66	278	9,214	38,741
Camp 9	93	373	2,098	8,527	6,462	27,770	19	63	8,672	36,733
Camp 24	2,178	10,551	524	2,213	5,065	20,835	16	52	7,783	33,651
Camp 10	12	53	616	2,632	6,987	30,164	21	81	7,636	32,930
Camp 8W	43	188	656	2,866	6,699	29,103	73	281	7,471	32,438
Camp 8E	34	142	853	3,730	6,346	27,514	21	83	7,254	31,469
Camp 14	12	44	602	2,793	6,333	28,702	28	121	6,975	31,660
Camp 4	44	190	329	1,359	7,217	29,287	253	1,067	7,843	31,903
Camp 11	3	11	1,084	4,811	5,989	26,371	6	25	7,082	31,218
Camp 2E	3,221	13,632	1,686	7,122	2,167	8,666	32	102	7,106	29,522
Nayapara RC*	3,750	20,077	250	971	1,687	5,845	36	106	5,723	26,999
Camp 18	12	48	166	686	6,357	26,038	26	96	6,561	26,868
Camp 2W	1,820	8,347	1,405	6,087	2,552	10,828	47	159	5,824	25,421
Camp 5	40	167	527	2,234	5,417	22,541	25	96	6,009	25,038
Camp 6	86	385	1,077	4,854	4,583	19,425	17	61	5,763	24,725
Camp 12	5	29	255	1,164	4,714	21,240	29	129	5,003	22,562
Camp 22	6	39	208	1,005	4,364	21,147	12	42	4,590	22,233
Camp 16	5	25	281	1,246	4,541	20,320	5	18	4,832	21,609
Camp 19	4	13	396	1,788	4,224	18,237	188	772	4,812	20,810
Kutupalong RC*	2,827	15,146	156	612	531	2,143	15	42	3,529	17,943
Camp 17	33	144	183	752	2,431	10,181	1,119	4,891	3,766	15,968
Camp 27	29	142	279	1,315	2,712	12,209	148	678	3,168	14,344
Camp 21	12	53	144	626	2,733	11,148	125	458	3,014	12,285
Camp 23	252	1,155	287	1,222	2,114	8,551	16	69	2,669	10,997
Camp 25	18	90	254	1,133	1,884	8,336	4	19	2,160	9,578
Camp 20	57	253	110	481	1,294	5,348	325	1,308	1,786	7,390
Camp 4 Extension	62	253	109	476	1,080	4,456	93	370	1,344	5,555
Camp 20 Extension	61	264	63	279	715	2,916	175	672	1,014	4,131
No camp**	51	236	65	278	664	2,862	23	94	803	3,470
<b>Grand Total</b>	<b>15,082</b>	<b>73,446</b>	<b>21,759</b>	<b>94,134</b>	<b>166,884</b>	<b>717,120</b>	<b>3,540</b>	<b>14,649</b>	<b>207,265</b>	<b>899,349</b>

\*Kutupalong RC includes 14,277 registered refugees of 2,617 families & Nayapara RC includes 19,895 registered refugees of 3,704 families

\*\*This represents refugees residing outside formal camp boundaries

## Population figures by specific needs

Camp	Families with separated children	Families with unaccompanied children	Families with a person with disability	Families with older person at risk	Families with older person at risk with children	Families with people with serious medical condition	Single male parents with infants	Single female parent	Families with people with specific needs
Camp 26	170	54	282	358	114	216	81	2,193	3,250
Camp 15	236	60	354	592	199	462	63	1,608	3,206
Camp 1E	172	45	553	457	325	486	56	1,176	2,941
Nayapara RC*	177	41	608	164	50	1,197	35	1,191	2,824
Camp 7	225	29	352	368	248	454	106	1,283	2,790
Camp 13	244	79	311	396	209	344	65	1,427	2,785
Camp 1W	164	32	393	448	215	449	66	1,254	2,744
Camp 3	190	58	374	362	288	320	64	1,410	2,639
Camp 24	177	73	301	287	121	257	43	1,640	2,637
Camp 9	248	90	200	298	202	278	102	1,487	2,564
Camp 4	149	73	384	397	262	489	95	1,051	2,538
Camp 10	126	79	383	338	242	510	93	1,040	2,428
Camp 8E	153	70	342	368	243	414	84	1,066	2,333
Camp 2E	163	52	264	249	199	309	51	1,200	2,207
Camp 18	154	62	239	223	168	296	81	1,147	2,094
Camp 5	161	70	216	288	168	212	59	1,092	1,959
Camp 11	168	61	267	293	157	230	66	1,066	1,963
Camp 14	119	46	185	314	138	305	43	970	1,886
Camp 6	161	43	225	245	125	333	39	830	1,839
Camp 2W	110	18	275	238	115	263	63	822	1,716
Camp 8W	91	36	237	271	149	287	80	738	1,676
Kutupalong RC	54	14	339	85	31	764	10	526	1,504
Camp 19	123	34	191	220	81	118	46	764	1,416
Camp 12	81	34	144	206	103	139	32	774	1,385
Camp 16	92	22	168	202	81	159	35	705	1,320
Camp 17	103	19	137	147	78	117	37	675	1,166
Camp 22	69	17	159	156	77	154	16	582	1,120
Camp 27	55	13	100	88	34	63	21	733	1,029
Camp 23	50	12	74	97	43	70	11	753	1,022
Camp 21	66	23	110	96	32	106	35	514	899
Camp 25	38	23	75	83	33	87	18	498	759
Camp 20	26	12	92	68	47	75	20	296	572
Camp 4 Extension	19	14	54	43	34	49	13	183	378
Camp 20 Extension	26	13	44	37	25	41	12	143	295
No camp	25	8	26	41	14	22	9	146	258
<b>Total</b>	<b>4,385</b>	<b>1,429</b>	<b>8,458</b>	<b>8,523</b>	<b>4,650</b>	<b>10,075</b>	<b>1,750</b>	<b>32,983</b>	<b>64,142</b>