


THE DEMOCRATIC REPUBLIC OF CONGO SITUATION


This update concerns the situation of Congolese refugees and asylum seekers in countries in the region.

As of 31 October 2018, 781,917 Congolese refugees are being hosted in African countries. From 1 January to 31 October 2018 alone, some 147,750 Congolese fled to neighboring countries, with a particularly **significant increase** in refugee flows to Uganda, Burundi and Zambia.






KEY INDICATORS

 **781,917 ***
Total of refugees and asylum-seekers from the DRC

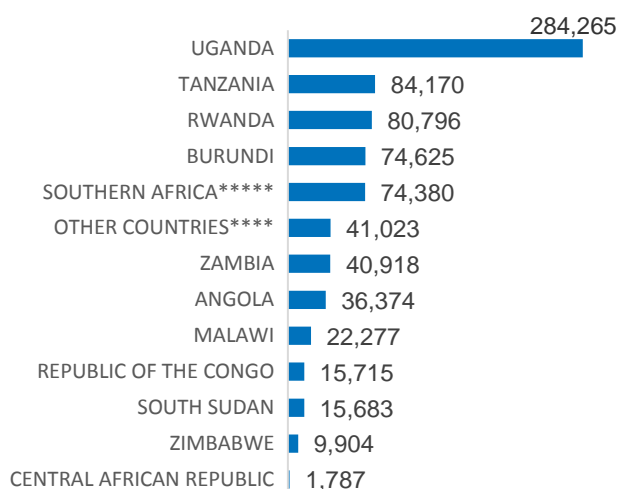
 **8,340** **147,750 ****
New arrivals in September 2018 Total of new arrivals in 2018

 **42**
Total number of Congolese refugees assisted to return since January 2018.

AGE, GENDER BREAKDOWN ***

				
48.9%	51.1%	55.8%	41.8%	2.4%
Men	Women	Children	Adults	Elderly

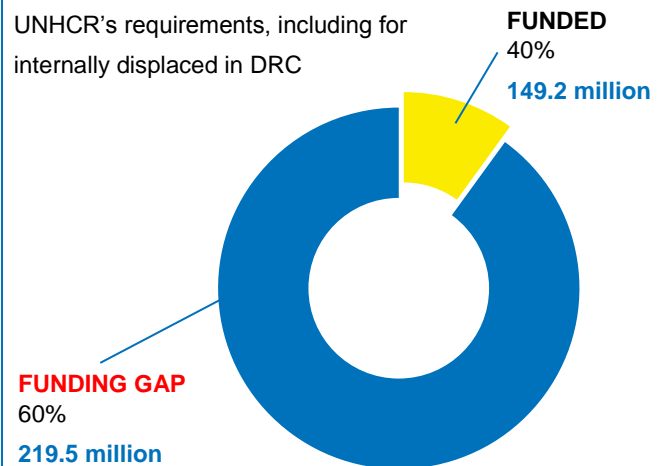
POPULATION OF CONCERN IN HOST COUNTRIES



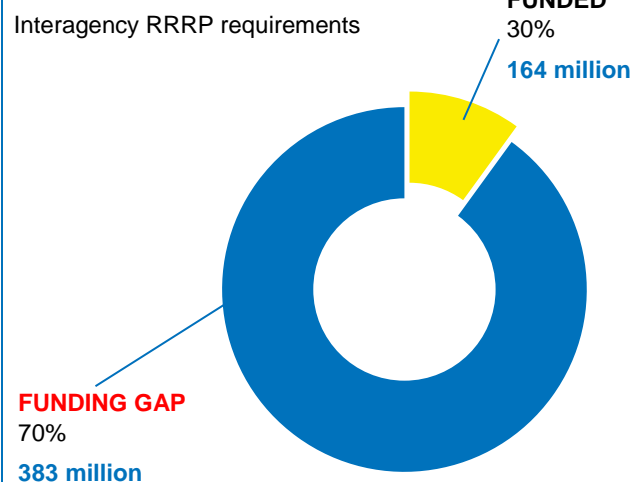
UNHCR together with 43 humanitarian and development partners launched the revised Regional Refugee Response Plan (RRRP) on 17 July 2018 for **\$547 million to help respond to the needs of Congolese refugees in Africa.**

FUNDING

USD 368.7 million



USD 547 million



* **Total number** includes figures from Angola, Botswana, Burundi, Central African Republic, Chad, Kenya, the Kingdom of Eswatini, Lesotho, Madagascar, Malawi, Mozambique, Namibia, Republic of the Congo, Rwanda, South Africa, South Sudan, Uganda, the United Republic of Tanzania, Zambia and Zimbabwe.

** **New arrivals** include figures from Angola, Botswana, Burundi, Chad, Central African Republic, Kenya, the Kingdom of Eswatini, Madagascar, Malawi, Mozambique, Republic of the Congo, Rwanda, South Sudan, Uganda, the United Republic of Tanzania and Zimbabwe.

*** **This age and gender breakdown** includes figures from Angola, Botswana, Burundi, Chad, Central African Republic, Kenya, the Kingdom of Eswatini, Madagascar, Malawi, Mozambique, Republic of the Congo, Rwanda, South Sudan, Uganda, the United Republic of Tanzania, Zambia and Zimbabwe.

**** **Other countries** include Chad and Kenya.

***** **Southern Africa** includes Botswana, the Kingdom of Eswatini, Lesotho, Madagascar, Mozambique, Namibia and South Africa.

NUMBER OF REFUGEES & ASYLUM-SEEKERS in countries of asylum as of the end of October 2018

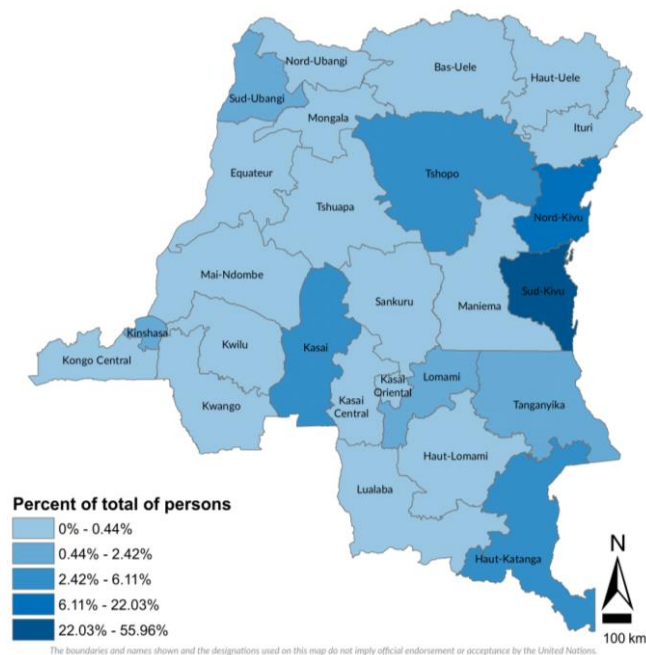


Creation date: 31 October 2018 Sources: UNHCR - Kinshasa Feedback: codkidrcim@unhcr.org

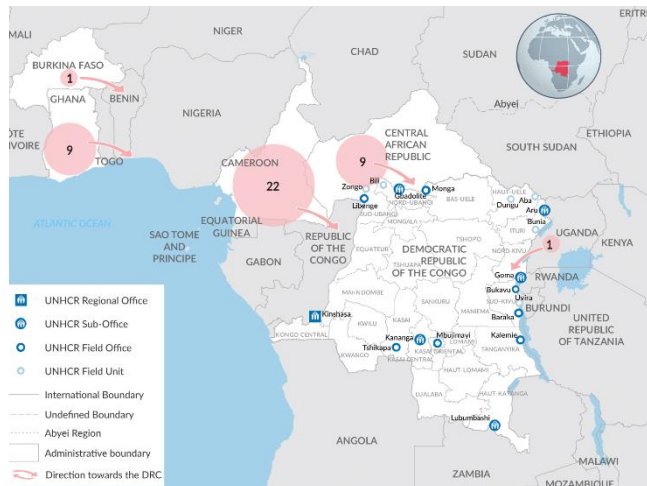
Regional Highlights and Operational Context

- A total of **781,917 Congolese refugees and asylum-seekers** are being hosted in countries in Africa, which have generously maintained an open door policy in granting asylum to old and new asylum seekers.
- The security conditions in the DRC, especially in the eastern and central provinces, remain volatile with sporadic outbreaks of violence leading to displacement of civilians within the country, and across borders to neighboring countries. This has placed the DRC refugee population **among the ten largest in the world**.
- UNHCR received **\$149.2 million** for the DRC situation, representing **only 40 per cent** of the total requirements for 2018.
- The interagency Regional Refugee Response Plan for the DRC situation has received **\$164 million**, representing **only 30 per cent** of the total requirements for 2018.
- Among the Congolese citizens expelled from Angola to DRC in October, UNHCR identified **2,373** Congolese citizens holding refugee documents from Angola. UNHCR and partners are closely monitoring the protection situation by reporting human rights violations, conducting referrals, and pursuing a cash for protection programme.

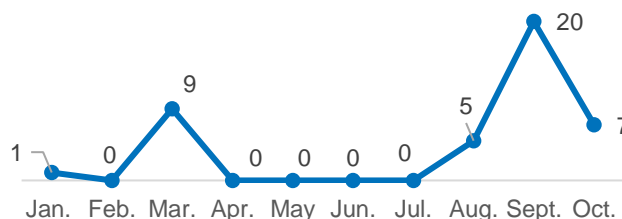
PROVINCES OF ORIGIN of Congolese Refugees



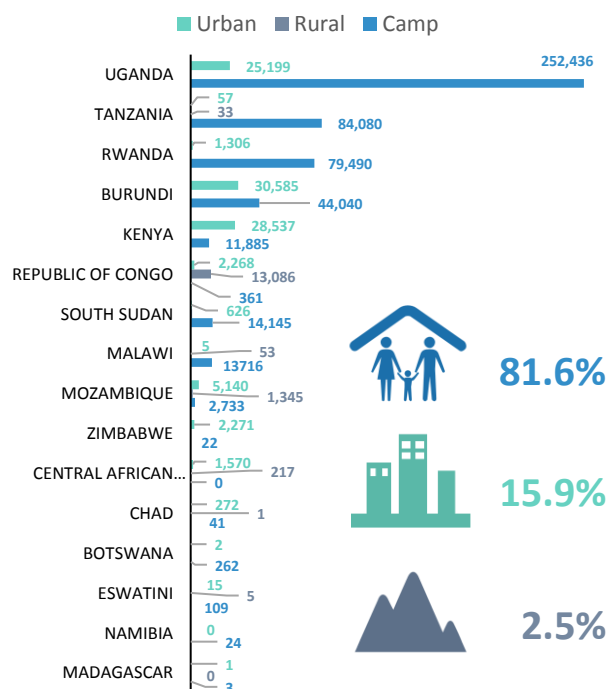
RETURNEES As of 31 October 2018



MONTHLY RETURNEES TREND Since January 2018



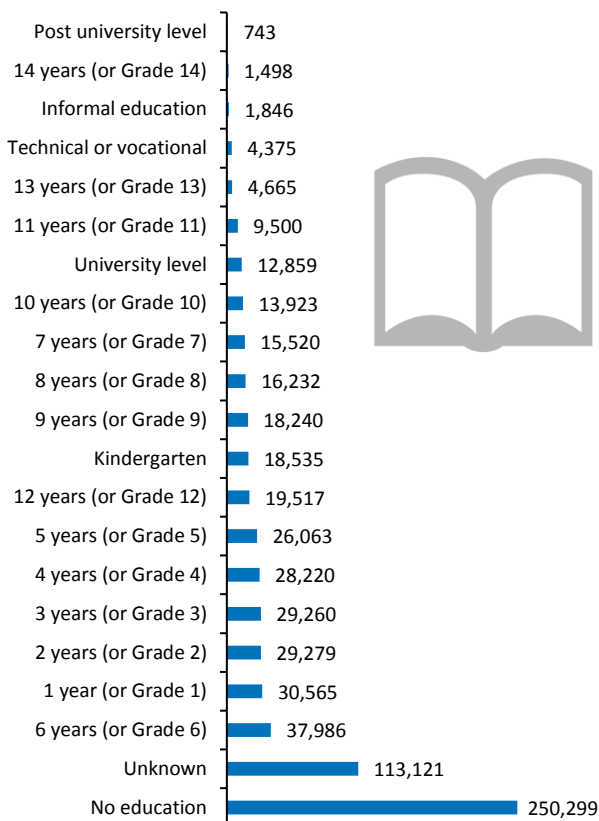
TYPE OF SETTLEMENT In Countries Of Asylum



The above map includes figures from Angola, Botswana, Burundi, Chad, Central African Republic, Kenya, the Kingdom of Eswatini, Madagascar, Malawi, Mozambique, Republic of the Congo, Rwanda, South Sudan, the United Republic of Tanzania, Zambia and Zimbabwe.

EDUCATION LEVEL OF REFUGEES

Number Of Persons Per Level



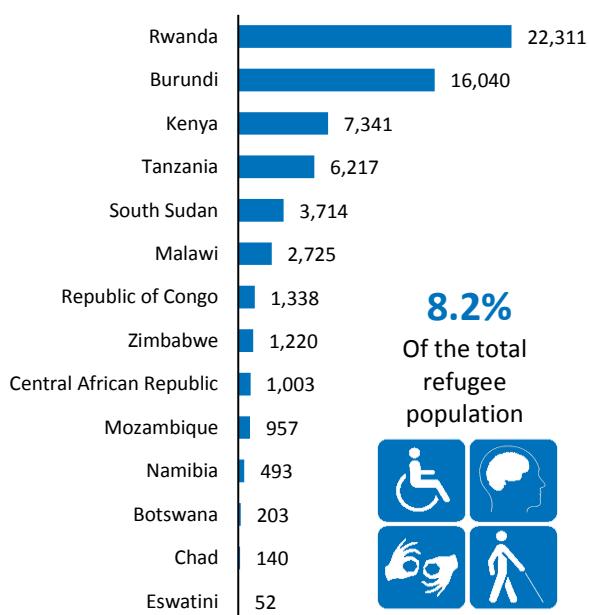
OCCUPATION OF REFUGEES

Number Of Persons By Type Of Occupation



NUMBER OF PERSONS WITH SPECIFIC NEEDS

Per Country of Asylum



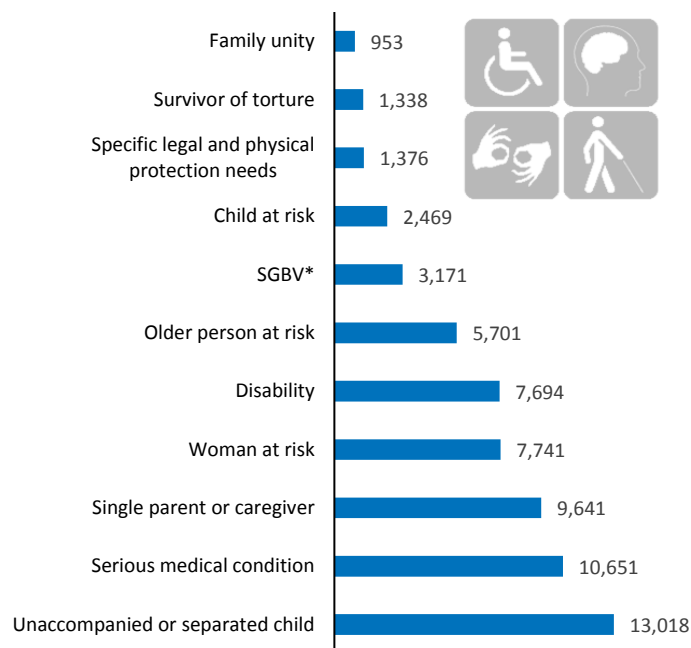
8.2%

Of the total
refugee
population



NUMBER OF PERSONS WITH SPECIFIC NEEDS

Per Category of Concern



* Sexual and Gender Based Violence (SGBV)

The above charts include figures from Botswana, Burundi, Central African Republic, the Kingdom of Eswatini, Kenya, Malawi, Mozambique, Republic of Congo, Rwanda, South Sudan, the United Republic of Tanzania and Zimbabwe.

Achievements during the Reporting Period

ANGOLA

Latest developments

- A total of 15,236 Congolese refugees (3,645 families) were residing in Lóvua refugee settlement, as at 31 October 2018.
- The relocation plan for some 8,500 refugees living in the urban communities to Lóvua settlement was completed and a total of 24 convoys is projected to relocate refugees within 10 weeks.

Achievements

- A reactivation exercise with the Angolan immigration authorities (SME) took place in the Lovua settlement and 121 individuals (67 households) were reactivated on the basis of family reunification.
- A total of 234 individuals (68 families), who earlier spontaneously moved from the urban communities to the Lóvua settlement, were officially settled in Lovua settlement. They received core relief items, and dignity kits were provided to 66 women and girls.
- The Lovua settlement was included in the national campaign of mosquito net distribution, after which post distribution monitoring was undertaken.
- Food commodities required for October distributions were procured and delivered on time to relevant Extended Distribution Points (EDPs) both in Dundo and Lóvua. In total, 22,688 refugees received food assistance.
- Nutritional screening of 733 children aged 6 to 59 months in Dundo was done. A total of 414 girls were included, with 21 being identified with Moderate Acute Malnutrition (MAM) and two with Severe Acute Malnutrition (SAM). Among the 319 boys screened, there were 13 new cases identified with MAM and one with SAM.
- A total of 266 solar lights were installed in Lovua and 12 additional lights were set up in the surrounding host communities.
- Partners continued to provide plastic sheeting for refugees who constructed transitional shelters. New tents were distributed to replace tents that were previously destroyed due to harsh weather conditions.
- A third borehole was established, out of a total of six planned boreholes.

Challenges

- More than 350,000 foreigners left the country in October as a result of a presidential ultimatum known as *Operação Transparência* (Operation Transparency). Most are from DRC, some of whom were refugees in Angola. The situation at the DRC's border area with Angola, which was already complex as a consequence of the Kasai conflict, deteriorated due to widespread destruction and inter-ethnic tensions exacerbated by a large number of returnees. Despite the challenges, UNHCR and partners keep monitoring the situation while investing their advocacy efforts to safeguard refugees' rights.
- Doctors in Dundo did not issue death certificates for refugees who passed away, resulting in refugees being buried without their deaths being properly documented. Partners have been working together to find a solution for these cases.

BURUNDI

Latest developments

- A total of 1,033 new refugees from the DRC arrived in Burundi, bringing the total number of refugees and asylum seekers to 74,625.
- The construction of the fifth refugee camp in Nyankanda was completed. The camp will be formally inaugurated at the beginning of December 2018.
- The operation was deeply affected by the ban of international NGOs, including IRC and JVC, which are UNHCR's main implementing partners in refugee camps. As such, UNHCR staff alongside refugee committees and the National Office for the Protection of Refugees and Stateless Persons (Camp Management) identified and agreed on priority needs requiring urgent assistance pending resumption of NGOs activities.

Achievements

- Newly deployed police agents in Bwagiriza and Kavumu refugee camps were trained on how to keep security and order in refugee settlements.
- A total of 61 resettlement cases were submitted, while 64 refugees departed for resettlement countries, bringing the number of resettled Congolese refugees from Burundi since the beginning of this year to 2103.
- UNHCR met with the ICRC and the National Red Cross to establish a strategy on family tracing and reunification. Following this, a campaign was organized in Kavumu refugee camp to increase refugees' awareness of the services offered by the ICRC, regarding family tracing and reunification.
- The enrolment of refugee candidates for the DAFI scholarship continued in refugee camps and in urban communities. School materials were distributed to urban refugee students in Rumonge and in refugee camps, and 600 benches were repaired in Musasa and Kinama refugee camps. Primary school teachers were recruited in Kavumu refugee camp, while school authorities and members of the parent's committees were trained on the school administration. Congolese school inspectors from the DRC trained secondary school teachers in charge of sciences in refugee camps.
- The construction of two blocks of three classrooms each was completed in Kavumu, as well as the rehabilitation of the police station in the same camp (destroyed by heavy rains) and the installation of 65 street lights. Plastic sheets were put in 39 classrooms in Kavumu in order to protect the pupils against cold and dust.
- Low crude mortality rate was achieved (1.2/1000/month) as well as low under 5 mortality rate (0.7/1000/month). All births (100%) were attended by skilled health workers. Immunization coverage (measles) stood at 97.7% in refugee camps. A total of 758 refugee households in urban areas enrolled in the health insurance scheme (SOLIS).
- More than 35,002 individuals living in refugee camps were supported with medical care by UNHCR. Ebola prevention in refugee camps continued, including campaigns and training of medical and field staff.
- Food fairs were organized in all refugee camps. Available food items included maize and cassava flour, beans, local and imported rice, and oil and salt. Identification of malnourished refugees, pregnant and lactating women in need of support continued. Refugees with moderate acute malnutrition living in refugee camps were assisted and CSB was distributed to children aged between 6 and 59 months.
- Works on the new water source in Gahama near Kavumu refugee camps started, while new drainable latrines were constructed at Kavumu camp, including at the school and at the police station. A total of 30 emergency latrines were constructed in Bwagiriza, several individual houses and latrines were disinfected, and water chlorinated in refugee camps. A sensitization session on good hygiene and on the good management of water and maintenance of water equipment was undertaken in all refugee camps.

Challenges

- There is a need to build additional classrooms and to rehabilitate the ones that were built with wooden materials. More qualified teachers in refugee camps are needed. In Rumonge urban refugee communities, the number of school dropouts has increased due mainly to the lack of means to pay for school fees. There are still difficulties for Congolese students to integrate in to public schools due to language barriers and curriculum differences.
- The long process to procure medication impacts the provision of health care provision to refugees. Urban refugees in Rumonge have limited access to primary health care due to a lack of financial means.
- An extension of the hangar of distribution is needed given the large number of refugees living in Kavumu camp.
- The food basket for refugees living in camps is no longer diversified as cash is no longer distributed. Nutrition supplementation assistance targets only pregnant women, lactating mothers and people living with the HIV chronic diseases. Nutritional assistance to refugees with severe acute malnutrition is provided by UNICEF through Government health structures outside refugee camps.
- Water supply is still an issue yet to be addressed in the newly constructed Makombe transit center in Rumonge.

MALAWI

Latest developments

- There were some 22,277 Congolese refugees and asylum seekers in Malawi as at the end of October.

- UNHCR together with the Ministry of Home Affairs continued to provide protection to new arrivals at Karonga Transit Center, Chitipa, Songwe and Mbilima borders. However, based on reports of *refoulement* of new arrivals from DRC, UNHCR verified that about 150 new arrivals were returned to Tanzania. A formal complaint has been lodged with the Government.

Achievements

- Resettlement Registration Forms (RRF) for a total of 506 individuals from the DRC were completed and referred to the UNHCR Regional Office in Pretoria for review. A total of 326 individuals from the DRC were resettled to the USA, Canada, Australia and Sweden.
- Some 4,000 children from DRC remain enrolled in schools in Dzaleka camp (188 in pre-school, 2,977 in primary school and 346 in secondary and 456 in tertiary) representing 32.8% of the eligible children for enrollment from DRC.
- Health services provided at Karonga transit centre are for under five children only, and relate to deworming and minor ailments. Any serious cases and ailments for adults are referred to Karonga or Chitipa district hospital.
- WFP provided food rations to 333 asylum seekers from DRC at Karonga Transit Centre.
- Welthungerhilfe (WHH), a WASH operational partner, carried out a number of WASH improvements at Karonga transit centre, such as desludging of latrines, emptying rubbish pits and septic tanks, renovating septic tanks, replacing top covers from whole covers.
- Jesuit Refugee Service (JRS), another WASH partner, carried out activities, such as maintenance of five doors on pit latrines that had no doors at Karonga transit shelter, while the maintenance of those at Chitipa and Mbilima was in process.

Challenges

- The Karonga transit centre is close to a public road and is not fenced, which poses risks especially to children.
- Congestion in schools at all levels is a significant challenge compromising the quality of education. Teacher/student and classroom/student ratios are also very high ranging from 1:80-120 per teacher/classroom against minimum local standards of 1:60.
- Health service delivery at Karonga transit centre, Chitipa and Mbilima reception centers need to be strengthened by providing transportation and ensuring constant supply of drugs.
- Most of the asylum seekers cannot afford to purchase health passports, which cost MK 200, at the district hospitals.
- A few items from the food ration were missing, such as pulses, cooking oil and CSB.
- Congestion and long waiting times to be transported from the transit centre to Dzaleka camp remain significant challenges and further result in food shortages.
- There is a need to construct proper drainage systems around WASH facilities and the surroundings at Karonga and to provide an additional five hand washing buckets for hygiene practices.
- Asylum seekers receive blankets and mosquito nets that have already been used at Karonga transit shelter; there is a need for new ones.
- There is lack of security guards at Chitipa transit centre to watch over the WASH facilities to address vandalism.

REPUBLIC OF CONGO

Latest developments

- As of 31 October 2018, the number of Congolese refugees and asylum seekers in RoC stood at 15,715.

Achievements

- One-time support was granted to three Congolese refugees (one woman and two men), amounting to 60,000 XAF (each person received 20,000 XAF) in October.
- Food crop activities, which were funded in September, continued. A new group will be selected in November for a new cycle.

- Terre sans Frontières conducted regular medical consultation at the CSI integrated health center in Betou for a total of 1,465 patients of which 277 were under five years.
- A total of 27 refugees were screened for HIV. Advice on attitudes to adopt were given to patients by health professionals during their appointments for screening results.
- Over 300 women refugees went for prenatal consultations by a medical doctor. A total of 95 births were attended by qualified staff (no delivery at home) and 48 family planning and 25 after birth consultations were conducted.
- A total of 387 refugees were sensitized, including 211 on HIV/AIDS and the risks of SGBV, and 176 on epidemic diseases.

Challenges

- There is lack of nutritional inputs (F75, F1000, plumpynuts, Plumpysup, CSB, CSB++, Oil, Sugar, etc.) for the severe and moderate acute malnutrition.
- Insufficiency of medical consumables (transfusers, catheters, infusers, syringes) and a lack of isolation sites remain significant challenges.
- Medicine and drug needs of refugees are very high, but due to limited resources, new orders for medicines, drugs and medical supplies are still pending.

RWANDA

Latest developments

- As of 31 October 2018, the number of Congolese refugees and asylum seekers in Rwanda stood at 80,796.
- World Mental Health Day was marked on 10th October 2018 in Nyabiheke and Gihembe refugee camps under the theme “Young people and mental health in a changing world”. Community members were sensitized on how to help the youth with mental health problems, the role of parents and family in promoting a positive mental health of all family members especially for children and the youth.
- UNHCR in collaboration with the Government of Rwanda launched the issuance of Machine Readable Refugee Travel Documents.

Achievements

- A total of four refugee students in Nyabiheke and Gihembe camps were granted university bursaries by DAFI.
- About 66 refugees from Nyabiheke and Gihembe camps graduated from a 6 month vocational training Programme at Gitwe/ Ruhango District.
- There were 14 Congolese refugee entrepreneurs who received a total of 7,800,000 Rwf loans from INKOMOKO to develop their businesses
- Over 12,500 persons benefited from outpatient medical consultation and there were 36 consultations per clinician per day. The top three morbidity diseases were Upper Respiratory Tract Infections (URI) 52 per cent, Intestinal worms 9 per cent and Skin Disease 6 per cent.
- In Nyabiheke camp 30 traditional shelters and 76 RHU (Refugee Housing Units) were built.

Challenges

- According to a new national Law, there is a penalty of 10, 000 Rwandan francs for late birth registration. Refugees have indicated that they cannot afford it.
- Congolese students enrolled in boarding schools away from the refugee camps still do not have access to healthcare, whereas the schools are obliging the children to get insured.
- Mugeru and Nyabiheke schools where refugee children are hosted, mainly from Nyabiheke camp, are facing an issue of insufficient desks obliging some students to sit on the floor.
- There is still a limited budget for medical referrals in all camps which results in many needs not being met.
- The average water supply in Nyabiheke camp remains 14 litres per person per day, which is below the minimum standard. Additional fund is needed to connect the camp to the district’s water treatment plant which has the potential to supply water at UNHCR’s standard to the camp and its host community.

UNITED REPUBLIC OF TANZANIA

Latest developments

- There were some 84,170 refugees and asylum seekers from the DRC in Tanzania, as at 31 October, 2018.
- The operational context in Tanzania continues to be complex and unpredictable. It remains characterized by a restrictive approach with regard to access to territory for refugees and asylum-seekers and by the closure of all border entry points across Northwest Tanzania. New administrative instructions further restricting refugees' movement both inside and outside camps have limited refugees' coping mechanisms, while the high rejection rate of refugee claims by the Government's national eligibility committee (NEC) exposes many asylum seekers to a variety of protection risks.

Achievements

- A total of 398 people of concern (PoCs) were reached during gender-based violence (GBV) prevention and advocacy awareness campaigns at Nyarugusu refugee camp. Some 140 PoCs had access to legal services at the camp and at detention centers in the Kasulu region.
- The education partner, IRC, and the refugee Congolese coordination team conducted a needs assessment in all 17 Congolese schools from 5 to 12 October. IRC also finalized the recruitment process for the four Instant Network School coaches.
- The Standardized Expanded Nutrition Survey (SENS) was undertaken in Nyarugusu camp and indicated that the Global Acute Malnutrition (GAM) rate stood at 1.6% and anemia prevalence among Congolese children was 56.0%. Overall, anemia and stunting among children reported to be above the WHO threshold has significantly increased among the Congolese.
- About 15,437 consultations were done at various health facilities serving the Congolese caseload with the facility utilization rate of 2.6. The leading cause of morbidity during the reporting period was Upper Respiratory Tract Infection (URTI) representing 33% of total consultations followed by Lower Respiratory Tract Infection (LRTI) and Malaria each representing 23% of total consultations, Urinary Tract Infection (7%) and others. During the same reporting period, 200 live births were conducted with 95% occurring at a health facility and done by skilled personnel.
- WFP continued the general food distribution and the ration in the refugee camps increased from 96% to 100% of the Kcal. The ration increased to cereals 380g, pulses 120g, oil 20g and salt 5g. The supplementary feeding programme for the treatment and prevention of malnutrition for children between 24-29 months were maintained on the full rations of 100%.
- A total of 67 emergency shelters were constructed to accommodate the asylum.
- Each refugee received 250g of soap instead of 450, during the general soap distribution.
- Average water supply was 21.5l/p/d and latrine coverage is 8 person/drop hole. A total of 1,941 household latrines were constructed through the community participatory approach, and 7 blocks of school latrines with a total of 60 drop holes were also constructed.

Challenges

- There has been an exponential increase (80%), of reported cases related to security concerns at Nyarugusu camp compared to September.
- Some 77 additional classrooms are still required as some classrooms in school units are dilapidated and put students at risk.
- Access to health services remains a challenge for Congolese asylum-seekers leading to them walking long distances to seek health services. There are inadequate resources for bridging the recurring WASH gaps.
- Insufficient logistical support to nutrition programme leads to delay in distribution of nutrition commodities.
- Congestion remains at centre one in Nyarugusu camp and the existing waiting shelter cannot accommodate the entire population to be served per day.
- Shortage of core relief items (CRIs) due to budgetary constraints, there has been no general replenishment distribution for Congolese refugees since 2014. This is particularly relevant in the case of Nyarugusu camp, given the environmental conditions and climate change. Additional budget is required to enable distribution of soap at the recommended standard.

UGANDA**Latest developments**

- As of 31 October, the number of Congolese refugees and asylum seekers was 284,265 with a total of 5,042 new arrivals from DRC.
- The countrywide verification exercise of refugees and asylum-seekers in Uganda that started in March 2018 was concluded on 24 October 2018. The official results released jointly with the Office of the Prime Minister and UNHCR indicate a total of 1,092,213 individuals were verified, representing 76% of the initial target 1.4m. This brings the total number of refugees and asylum-seekers in the country to 1,154,352, including new arrivals registered since March 2018.

Achievements

- UNHCR has deployed a roving Public Health Officer to support the Ebola preparedness in the refugee hosting districts. The Health Officer will carry out an assessment and coordinate related preparedness activities with the Taskforce, partners and the Ministry of Health. UNHCR continues to participate in the weekly Ebola taskforce meetings and oversee the community surveillance activities in the refugee settlements and refugee border entry areas.
- To support the Ebola response, WFP and UNHCR agreed that refugees be given a two-month food ration in high risk settlements of Kyaka II and Kyangwali to minimize EVD transmission as a result of increased contact in gatherings. WFP in October distributed food in those settlements based on that recommendation.
- Service delivery in WASH awareness continued to improve in all settlements. On average, 21.9 million litres of potable water was supplied daily to people of concern, ensuring per capita access remained on average above 16 litres per person per day in all settlements. A total of six water schemes were commissioned reducing water trucking to less than 9%. A comprehensive water and sanitation development plan for Bidibidi and the neighbouring 16 sub-counties was completed.
- In the South West, the construction of the new male ward at Rwamwanja HC III was completed by LWF, while the maternity ward has reached 95% completion pending electrical connections and minor finishing works. During October, with UNHCR funding, LWF built a total of 10 semi-permanent PSN shelters in Rwamwanja and CAMFOMI renovated 12 existing semi-permanent PSN shelters in Oruchinga. The renovation works entailed a new CGI roof, wall plastering and the replacement of doors and windows. In Nakivale, under partner AIRD, expansion works at the Kabazana Reception Centre are progressing, with the latrines and bath shelters completed, and AIRD's new office block finished. In Base Camp, IP HIJRA handed over the complete construction of a CFS and woman's centre to beneficiaries for use.
- UNHCR with the support of partners continued to address environmental restoration by supporting environmental awareness campaigns, tree-marking for protection, tree nursery development, tree seedling distribution and planting and maintenance and conducting awareness raising, environmental education sessions for both refugees and host community, among other activities. Access to sustainable energy was also increased especially through skilling for construction of energy-saving stoves and briquette production as income generating activities.
- The National Forest Authority approved the release of over 190,000 tree seedlings to be planted in November across Nakivale, Rwamwanja, Kyaka II and Kyangwali refugee settlements.

Challenges

- In Kyaka II, there are several projects facing completion delays. Less than 40 % completed, the expected deadline for the construction of 175 semi-permanent shelters by AIRD will not be met due to delayed payments to contractors and absence of teams on the ground. Out of the total target of 175 PSN shelters, only 48 have been handed over.
- The construction of Danish Refugee Council staff accommodation units' was stopped for over three weeks. The overall progress is less than 40 % and the expected deadline of mid-November cannot be reached if mobilization is not done as soon as possible. Progress has stalled for the four classrooms under construction by the Danish Refugee Council in Sweswe's Vocational Training Centre. The other contractors on site are working to their agreed timelines.

ZAMBIA
Latest developments

- Some 788 new arrivals of Congolese were registered in October, bringing the total population of refugees and asylum seekers from the DRC to 40,918. Reception and registration of new arrivals continued in Lusaka, North-Western, Luapula and Northern provinces.

Achievements

- ISIBINDI preparatory activities (a Child Protection & Care Project targeting unaccompanied and separated children) by MCDSS, COR, Save the Children and UNHCR Protection working group resumed in Mantapala settlement and 30 Community Youth Workers from the Zambian Community and refugee community have been recruited.
- With funding from UNICEF, Save the Children and Plan International constructed 24 classrooms (two schools of 12 classrooms each) in Mantapala. Furniture for both schools was delivered.
- Provision of health services to the Congolese and host community continued in Mantapala.
- In Mantapala, general food distribution was conducted using block addresses and family size system targeting 11,456 beneficiaries. This was the first ever system to be used. The system involved calling people according to blocks and their family sizes. New arrivals in Meheba and Mayukwayukwa settlements did not receive dry food rations but received cash assistance. Only new arrivals at the transit centre in Meheba received wet meals.
- A total of 283 older persons in Meheba received food items, including beans, mealie-meal and buckets during the distribution exercise.
- The Zambia National Service (ZNS) continued road construction works within Mantapala.
- In Meheba, some 19 shelters out of 30 have been constructed in Road 22 of the settlement.
- In Mantapala, water production reached 402m³/day and water availability 34.8 litres/person/day. There were 396 communal toilets in Mantapala, resulting in a ratio of 1:12.
- There were 58 volunteer hygiene promoters conducting door-to-door hygiene promotion activities in the Settlement, supported by ZRCS. The ratio of hygiene promoters to households was 1:188. Some 1,489 households in Mantapala were without durable toilets and bath shelters in the Settlement.
- A total of 100 (60 refugees and 40 from the host community) potential entrepreneurs were selected for the upcoming Start Your Business (SYB) training and business start-up support in Mantapala Settlement. Additionally, two livelihood mentors (one refugee and one from the host community) were recruited from the community in order assist regular monitoring, follow-ups and supervision of business activities among the selected entrepreneurs in the settlement.
- A total of 310 beneficiaries (186 refugees and 124 from the host community) were trained in conservation agriculture, land preparation and crop production so that they are able to undertake farming that is sustainable and that promotes environmental protection in Mantapala.

Challenges

- There is need to train community police, and for bicycles to facilitate their mobility/patrols in the community, protective clothing considering the rainy season, torches for lighting and whistles for communication.
- The absence of network and connectivity in most parts of Mantapala, and the lack of access to energy, lighting in particular, remain major challenges.
- In view of the exhaustion of CERF funds, Save the Children is concluding its activities and will no longer be part of the protection work group. Other protection partners have also exited due to the lack of funding.
- Lack of teachers' guides and learner text books affected the quality of teaching and learning in Mantapala.
- Diarrhoea cases have continued to be reported at the clinic in Mantapala and in the host community. The cases have been attributed to inadequate sanitation facilities, especially in schools.
- There is a need for continued funding for WFP to sustain food supplies to Congolese refugees in Mantapala. The current distribution centre requires repairs including provision of a waiting shelter for refugees.
- A total of 406 households in Mantapala require relocation from their current plots following recommendations by water table mapping consultants.
- Inadequate funding remains a challenge in the implementation of livelihood activities for refugees. The number of beneficiaries is more than the available funds can cater for.

ZIMBABWE**Latest developments**

- During October, there were 139 new arrivals of Congolese refugees and asylum seekers in the country bringing the total population in the country to 22,277.

Achievements

- A total of 29 cases were granted asylum, out of 85 asylum applications.
- A total of 31 cases (91 individuals), mainly Congolese, were interviewed for resettlement in Harare. One Congolese was resettled to Canada and a total of 17 cases (68 individuals) submitted for resettlement to the USA.
- About 639 children enrolled at the Early Childhood Development (ECD) and 341 are expected to be enrolled in the first grade during 2019. The Tongogara Primary School received one additional teacher from the Ministry of Primary and Secondary Education (MoPSE), while St Michael's Secondary School in the same camp received two additional teachers. Seventh grade examinations were described by many stakeholders as having been professionally and successfully conducted at Tongogara Primary School.
- A total of 95 new arrivals were screened for infectious diseases by the environmental health department. Water purification tablets were distributed at the clinic and in the community, reaching out to 259 households. A total of 784 households were reached during commemoration of the Global Hand Washing Day on 17 October 2018. Participants received 160x0.250kg bars of soap during handwashing demonstrations in the community.
- GOAL continued to monitor and support the Tongogara based livestock production projects. Twenty-one crossbreed piglets were delivered during the reporting period.
- Refugee farmers in Tongogara refugee camp started harvesting their butternut crop that they have grown under flood irrigation under the GOAL supported agriculture livelihood project.
- Cash-based interventions continued to be implemented in Tongogara refugee camp. Under current arrangements, only newly arrived asylum seekers receive food assistance until they have stayed at least three months in the camp.
- Construction works for 200 shelters started in Tongogara refugee camp, and are expected to be completed by 31 December 2018
- Core relief items were distributed to 399 new arrivals in Tongogara. Distributed items included 798 blankets, 205 kitchen sets, 102 x 20L semi collapsible jerry cans, 507 x 10L semi collapsible jerry cans and 266 mosquito nets.
- The October firewood allocation of 9x30 metric tonnes was received and distributed to 1,569 households, providing a safe domestic energy source for the population in the camp.
- Some 114 PoCs were oriented on environmental hygiene in section 9, the newest part of the camp at Tongogara camp, in preparation for the implementation of the Julia Taft grant that was earmarked to support and improve WASH activities.

Challenges

- The number of teachers required for an optimal teacher/pupil ratio remains unmet despite the three new teachers received following a request for 11 teachers submitted to the relevant ministry.
- The Ministry of Health and Child Care still has no malaria prophylaxis (fansidar) for pregnant women. As the drug has not yet been found in private pharmacies, TDH, UNHCR's partner responsible for health, is checking with registered warehouses if the drug can be imported on their behalf.
- Tongogara refugee camp is reported to be at a high risk of an Ebola outbreak because the majority of asylum seekers come from the DRC. There is a need to mobilize resources and train staff on how to screen and manage the situation.
- Water supply was inconsistent across all sections of the camp due to power outages.
- There is a need for more funds for shelter construction, as the need for shelter in Tongogara is far from being addressed comprehensively. UNHCR is continuing fundraising efforts.
- There is need for a generator as a power back up due to several acute electricity outages affecting activities, and water supplies in Tongogara refugee camp, which is dependent on electricity supplied by the national power supply company.

Financial Information

UNHCR is very grateful for the financial support provided by donors who have contributed to our activities with unearmarked and broadly earmarked funds as well as for those who have contributed directly to the situation or operations.

Donors who have contributed to the DRC situation:

- United States of America
- CERF
- United Kingdom
- Private donors Germany
- Belgium
- Finland
- Japan
- Denmark
- European Union
- Sweden
- Italy
- Educate A Child Programme (EAC/EAA)
- Swedish Postcode Lottery
- Republic of Korea
- IKEA Foundation
- Norway
- Better Shelter RHU AB
- Tadashi Yanai
- UN Children Fund
- Andorra
- Miscellaneous private donors

BROADLY EARMARKED CONTRIBUTIONS

United States of America 257 million | **Private donors Australia** 11.1 million | **Canada** 6.6 million | **Sweden** 3.2 million | **Private donors Sweden** 2.4 million | **Private donors Republic of Korea** 2.1 million

France | Germany | Japan | Luxembourg | Malta | Norway | Republic of Korea | Switzerland | United Kingdom | Private donors

UNEARMARKED CONTRIBUTIONS

Sweden 98.2 million | **Private donors Spain** 58.7 million | **United Kingdom** 45.3 million | **Norway** 42.5 million | **Netherlands** 39.1 million | **Private donors Republic of Korea** 28.5 million | **Japan** 26.5 million | **Denmark** 25.5 million | **Private donors Japan** 16.1 million | **Switzerland** 15.8 million | **Private donors Italy** 15.1 | **France** 14 million | **Germany** 13.7 million | **Private donors Sweden** 12.2 million | **Italy** 11.2 million


Algeria | Argentina | Belgium | Bosnia and Herzegovina | Bulgaria | Canada | Chile | China | Costa Rica | Estonia | Finland | Iceland | India | Indonesia | Ireland | Israel | Kuwait | Liechtenstein | Lithuania | Luxembourg | Monaco | Montenegro | New Zealand | Philippines | Portugal | Qatar | Republic of Korea | Russian Federation | Saudi Arabia | Serbia | Singapore | Slovakia | Sri Lanka | Thailand | Turkey | United Arab Emirates | Uruguay | Private donors

Working in Partnership

Partners involved in the 2018 Regional Refugee Response Plan (RRRP) for the DRC include:

Action Africa Help | Action Against Hunger | Adventist Development and Relief Agency | African Initiative for Relief and Development | Agency for Technical Cooperation and Development | American Refugee Committee | Building Resources Across Communities | CARE International | Caritas | Danish Refugee Council | Fédération Luthérienne Mondiale | Finn Church Aid | Food and Agriculture Organisation | Good Neighbours International - Tanzania | Gruppo di Volontariato Civile | Help Age International | Humanitarian Open Street Map Team | Humanity and Inclusion | International Aid Services | International Organisation for Migration | International Rescue Committee | Jesuit Refugee Service | Johanniter | Kabarole Research and Resource Center | Lutheran World Federation | Médecins du Monde | Medical Teams International | Norwegian Church Aid | Norwegian Refugee Council | OXFAM | People in Need | Plan International | Save the Children International | Tutapona | Uganda Red Cross Society | United Nations Children's Fund | United Nations Department of Safety and Security | United Nations Development Programme | United Nations High Commissioner for Refugees | United Nations Population Fund | United Nations Resident Coordinator's Office | World Food Programme | World Health Organisation

Links / click for access

<p>UNHCR Operational Portal Refugee Situations DRC SITUATION</p>	<p>UNHCR Global Focus Operations Worldwide DRC SITUATION</p>		<p>2018 Regional Refugee Response Plan (RRRP) for the DRC situation</p>		<p>2018 Supplementary Appeal for the DRC situation</p>		<p>UNHCR Brochure on Underfunded Situations in 2018</p>
---	---	---	---	--	--	---	---

News & Stories / click for access

[Mass Congolese returns from Angola could lead to a humanitarian crisis](#)

REGIONAL COORDINATION

- **Ann Encontre** is the Regional Refugee Coordinator (RRC) for the DRC situation, covering Congolese refugees in Angola, Burundi, Central African Republic, Rwanda, Republic of the Congo, South Sudan, the United Republic of Tanzania, Uganda, Zambia and other countries receiving refugees from the DRC.
- UNHCR leads and coordinates the response to the DRC refugee emergency, ensuring that the response is coherent with developments within the DRC, in close collaboration and consultation with relevant government counterparts, and with the support of UN Country Teams and other humanitarian and developments partners.

CONTACTS

Stylianos Kostas, Associate Coordination Officer, UNHCR Regional Representation, Kinshasa, DRC, kostas@unhcr.org