

Regional Refugee Response Plan

January 2019 - December 2020

OVERVIEW

1.1 M
PROJECTED REFUGEE POPULATION BY 2019

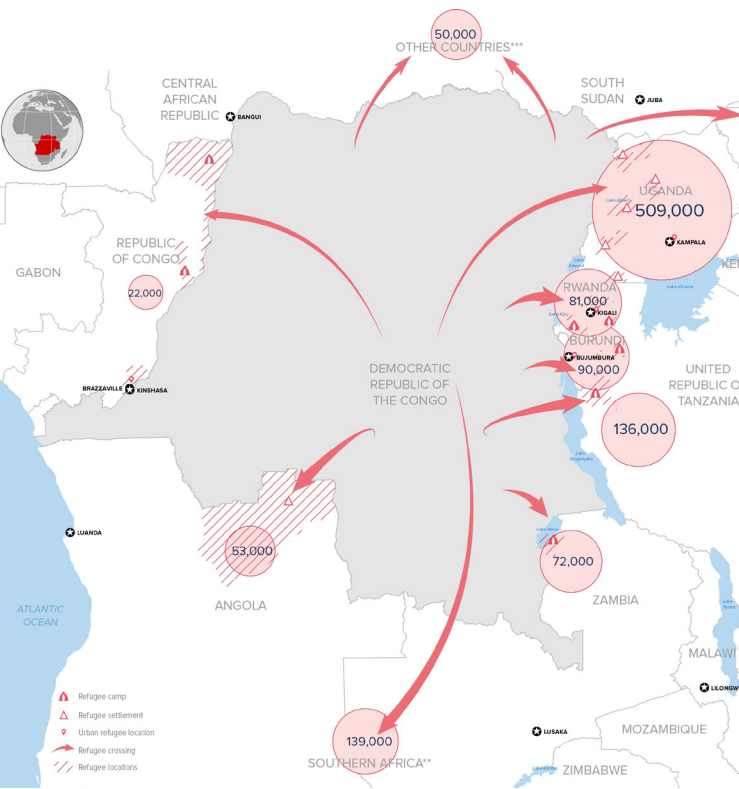
US\$ 743 M
FINANCIAL REQUIREMENTS FOR 2019

57
PARTNERS INVOLVED

The 2019-2020 Regional Refugee Response Plan (RRRP) for the Democratic Republic of the Congo presents the biannual inter-agency response to the renewed and heightened humanitarian challenge posed by the mounting number of Congolese refugees in the countries neighbouring the DRC, including existing refugee populations and new arrivals, and host communities.

By the end of 2019, response partners aim to address the needs of 1,152,000 Congolese refugees in seven countries of asylum (Angola, Burundi, the Republic of Congo, Rwanda, Uganda, the United Republic of Tanzania and Zambia), which have detailed response plans featured in separate chapters, and in other countries in the region where Congolese refugees are being hosted.

Response activities and interventions in refugee hosting areas that are impacted by the refugee crisis will target local populations with the aim to provide assistance to some 1,588,000 individuals, thus ensuring access for all to better quality services while promoting development and building social cohesion.



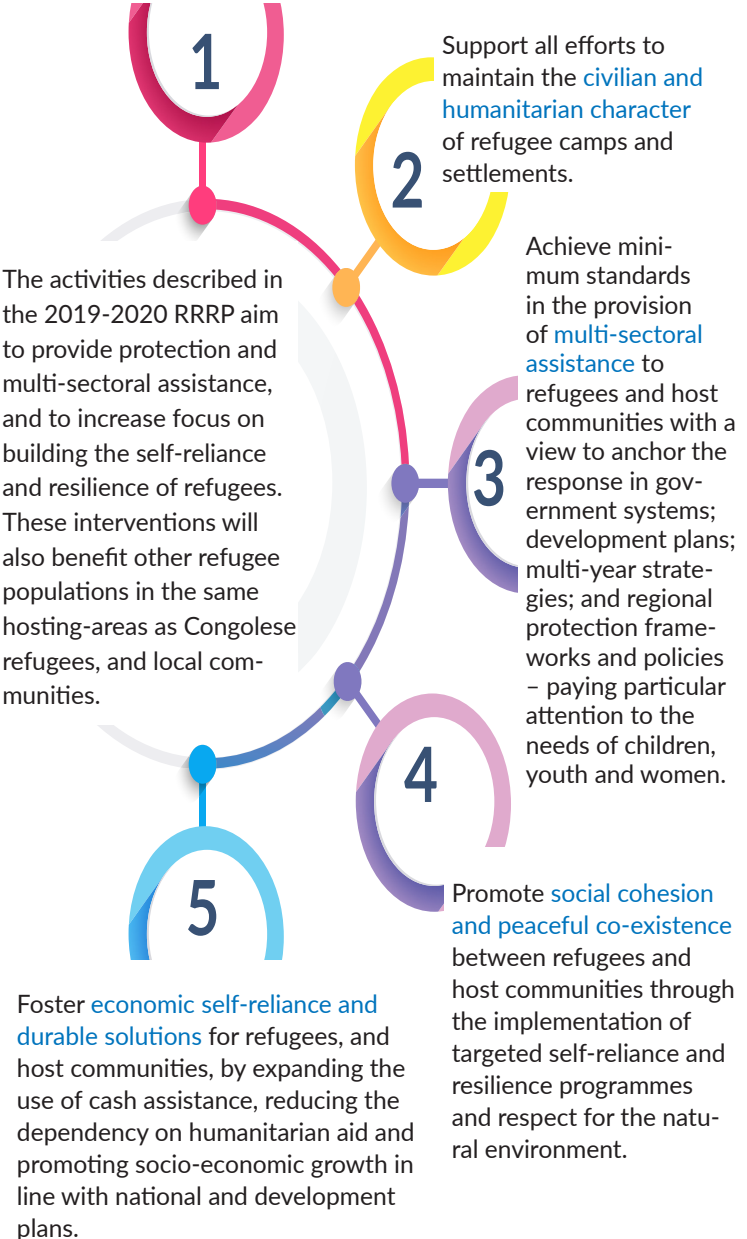
PROJECTED CONGOLESE REFUGEE POPULATION

	Current population as of September 2018	Planned Population as of end of 2019	Planned Population as of end of 2020
Angola	36,000	53,000	51,000
Burundi	74,000	90,000	110,000
R.O. Congo	16,000	22,000	21,000
Rwanda	80,000	81,000	84,000
Uganda*	272,000	509,000	539,000
U.R.O. Tanzania	84,000	136,000	152,000
Zambia	40,000	72,000	58,000
Southern Africa**	105,000	139,000	154,000
Other Countries***	58,000	50,000	54,000
Total Population	765,000	1,152,000	1,223,000

These rounded figures have been updated to reflect the results of a continuous biometric registration and verification exercise in countries of asylum.
 * This baseline population figure for Uganda is based on data provided by the OPM/RIMS, as of June 2018, and UNHCR/OPM verification figures, as of June 2018.
 ** Southern Africa includes Botswana, Indian Ocean islands, the Kingdom of eSwatini, Lesotho, Madagascar, Malawi, Mozambique, Namibia, South Africa and Zimbabwe.
 ***Other countries include Central African Republic, Chad, Kenya and South Sudan.

2019-2020 STRATEGIC OBJECTIVES

Preserve equal and unhindered **access to territorial asylum and international protection**, promoting the full enjoyment of rights, and the civilian character of asylum.



2019-2020 FINANCIAL REQUIREMENTS IN US \$

	2019 US \$	2020 US \$
Angola	60,178,229	53,169,646
Burundi	42,897,026	45,060,477
R. O. Congo	21,960,701	16,624,529
Rwanda	64,660,308	62,384,736
Uganda	389,558,964	367,396,703
U. R. O. Tanzania	85,296,255	100,088,252
Zambia	76,819,768	56,194,033
Regional	1,944,799	1,944,799
Total	743,316,050	702,863,175

REGIONAL COORDINATION

The 2019-2020 DRC RRRP brings together 57 partners in Angola, Burundi, Republic of Congo, Rwanda, Southern Africa, Tanzania, Uganda and Zambia. The United Nations High Commissioner for Refugees appointed Ann Encontre as the Regional Refugee Co-ordinator (RRC) for the DRC situation to work with UNHCR Representatives in the countries of asylum to ensure an overarching vision and coherent inter-agency engagement across the region. The RRC works at the regional level to facilitate strategic planning, and operational synergies in close collaboration and consultation with relevant government counterparts in countries of asylum in the region, UN agencies, non-governmental organizations, donors, civil society partners, the private sector, and other stakeholders.

At the country level, the Refugee Coordination Model remains the main tool to coordinate the refugee response.

REGIONAL RRP PARTNERS

Action Africa Help International	International Aid Services	Water Mission
Action contre la Faim	International Organization for Migration	Windle International Uganda
ADRA Zambia	International Rescue Committee	Women Legal Aid Center
African Initiative for Relief and Development	Jesuit Refugee Services	World Food Programme
African Women and Youth Action for Development	Johanniter	World Health Organization
Agency for Technical Cooperation and Development	Kabarole Research and Resource Centre	World Vision International
American Refugee Committee	Lutheran World Federation	
Association of Volunteers in International Service	Lutheran World Relief	
Building Resources Across Communities	Médecins du monde	
Care and Assistance For Forced Migrants	Medical Teams International	
CARE International	Mines Advisory Group	
Caritas	Norwegian Refugee Council	
Catholic Organization for Relief and Development Aid	Oxfam	
Catholic Relief Services	People in Need	
Church World Service	Plan International	
Community Environmental Management and Development Organization	Programme Against Malnutrition	
Danish Refugee Council	Samaritan's Purse	
Finn Church Aid	Save the Children International	
Food and Agriculture Organization	Self Help Africa	
Good Neighbours Tanzania	Uganda Red Cross Society	
Humane Africa Mission	United Nations Capital Development Fund	
Humanitarian OpenStreetMap Team	United Nations Development Programme	
Humanity & Inclusion	United Nations High Commissioner for Refugees	
Impact Initiatives	United Nations International Children's Emergency Fund	
	United Nations Population Fund	
	UNWOMEN	
	War Child Holland	

FOR MORE INFORMATION

The full 2019-2020 DRC Regional RRP can be accessed online from the DRC Situation Data Portal - <https://data2.unhcr.org/en/situations/drc>

Stylianou Kostas, Associate Coordination Officer, kostas@unhcr.org

