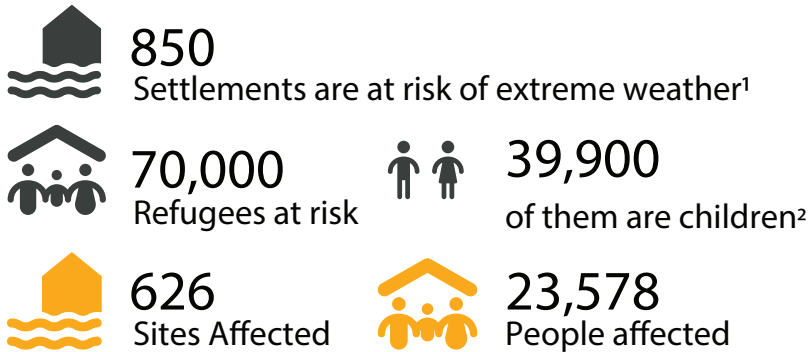


As refugees and Lebanese households continue to be exposed to adverse weather conditions, partners respond to the needs of those who have been affected and are reinforcing preparedness and mitigation efforts.

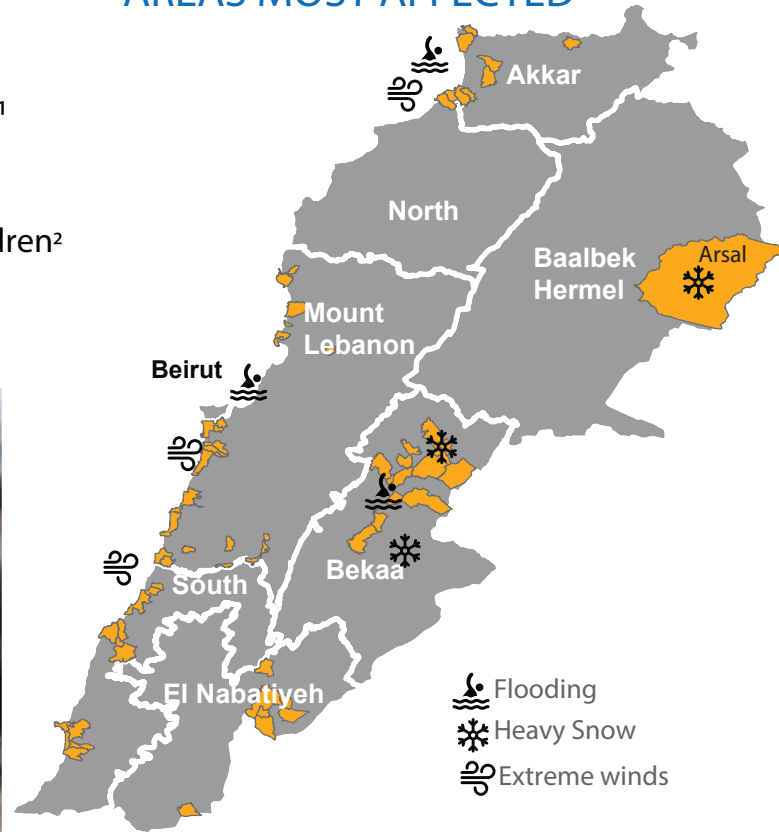
Storm Miriam began today, with strong gusts of wind expected to have reached 100 km/h, especially in northern Lebanon. Scattered rains intensified at noon accompanied with thunderstorms and torrents with mudslides, and snowfalls in altitudes. On Thursday, low temperatures and scattered showers during the morning are predicted with snow expected at 700 meters and above. The weather will gradually improve during the day turning partly cloudy in the evening, with possible ice formation on roads above 700 meters during the night. Friday, a rise in temperature is anticipated but danger of ice formation on mountain roads during the morning and at night at 800 meters and above persist.

Tragically, an eight-year-old Syrian refugee girl who fell into a canal in Saida drowned and her 21-year-old brother also perished after jumping in trying to save her. Also in Saida, a two-year old perished after parts of the roof of the family's rented apartment caved in.

## AFFECTED POPULATION



## AREAS MOST AFFECTED



(C) UNHCR / Diego Ibarra Sanchez  
Informal settlement in Aرسال, Baalbek - Hermel

## BEKAA / BAALBEK - HERMEL

Situation Update – 20:00

### New sites have been affected.

- A total of 97 sites and 11,620 individuals have been assisted with core relief times.
- New municipalities have been affected, including Meksi, Saadnayel, Ghazze, Meksi, Bar Elias, Faour, Anjar, Majdel Anjar and Marj.
- Rains and snowfall started in the afternoon and informal settlements in Saadnayel, Ghazze, Meksi and Bar Elias have been most affected. Sixteen families were relocated to a school, Urda camp and a partner premise.
- Flood reports have also been received from Faour, Anjar, Majdal Anjar and Marj.
- As the situation is evolving tonight, 100 persons have requested evacuation in Bar Elias. Roads are unpassable, limiting access of partners. Five trucks have been mobilized and another five trucks are on standby to move families to URDA camp.
- MOSA has identified further community halls in the municipalities of Bar Elias, Joub Jannine, Ghazze and Majdal Anjar as relocation sites.
- To date, 3,403 mattress, 10,945 blankets, 128 kitchen sets, 40 jerry cans, 2,107 hygiene kits, 1,235 winter clothing kits and 1,015 fuel vouchers were distributed. In Wadi Hmeid, 675 blankets, 24 liters of fuel and a food parcel per family have been

distributed. 143 sites have been assessed by the Shelter sector and 547 shelter kits were distributed.

### Preparation measures in Aرسال are taking place with the municipality:

- Preparations in Aرسال for the storm were discussed with the municipality and partners.
- The municipality will assist in deblocking roads and five tonnes of salt has been provided. A smaller bulldozer is being requested to unblock narrower roads and those inside settlements.
- The Municipal Support Assistant (MSA) in Aرسال has created a local WhatsApp group that includes INGOs, local NGOs and Syrian NGOs for better coordination on assistance and quicker response to emergency.
- The mosque has been identified as the main relocation site. 19 drainage kits to the nine most at-risk settlements were provided. Warehouses have been restocked with blankets and mattresses.
- 4x4 cars are on standby to reach Aرسال, including for health emergencies. Settlements most difficult to reach are those in Wadi Hmeid in the Aرسال outskirts, as well as Wadi Ata, Wadi Arnab and Wadi Soued. Daily distribution of core relief items are ongoing.

**Partners involved in the response:** MoSA, MoSDA, MoIM, governors' offices, municipalities, UNHCR, UNICEF, WFP, Save the Children, NRC, GVC, ICRC, Medair, LRC, SOS, IRC, INTERSOS, HIMAYA, WVI, DAF, Anera, URDA, ACF, MSF, SALAM LADC, SI, SAWA group, Damma, SAMS, Caritas, Islamic Relief, Basma and Zeitouna, and MERATH.

<sup>1</sup> Weather report issued by the Estimates Unit at the Department of Meteorology, January 14, 2019  
<sup>2</sup> Satellite imagery analysis by OCHA using Copernicus Sentinel-2 imagery dated 11 January, 2019



(C) UNHCR / Karim Salhab  
Assessing Informal Settlement in Minieh, Akkar

## NORTH & AKKAR

Situation update – 17:00

### Response continues:

- As of today, 109 informal settlements and 2,850 individuals have been assisted with core relief items.
- Four storm-affected families were relocated to shared shelters. During the day, blankets were distributed in 24 affected sites in Akkar. 450 food parcels and 450 fuel vouchers were provided to families living in Rihaniyeh informal settlements, and 200 food parcels and 600 fuel vouchers were distributed to affected families (refugees and host community) in Meshmesh and Tikrit– Akkar.
- The local municipality supported refugees to clean an irrigation channel that overflowed in a site in Minieh to prevent any additional floods.
- Referrals continue to be received through hotlines, outreach volunteers and community mobilisers, and are being disseminated to relevant partners for their follow-up.
- The cumulative distribution of core relief items since the beginning of the response has reached 418 weather proofing kits, 125 drainage kits, 557 winter kits, 2,280 mattresses, 3,669 blankets, 291 hygiene kits and 169 baby kits. So far, 117 households have received emergency cash and 1,170 food parcels have been distributed.

### Preparedness actions continued as extreme weather conditions still on the horizon:

- The Emergency Coordinator shared alert messages on the storm with response partners.
- The adapted rapid needs assessment and tracking tools were tested, and shared with partners.

### Partners involved in the response:

MoSA, MoIM, MoSDA, governors' offices, municipalities, UNHCR, UNDP, UNICEF, WFP, Concern WW, Solidarités, PU-AMI, Leb-relief, Save the children, Lebanese Red Cross, IRC, NRC, Caritas Lebanon, PCPM, MSF, ICRC, DAF, URDA and WVI. Lebanese Armed Forces were distributing some relief items in coordination with the Lebanese Red Cross.

## FOCAL POINTS FOR EXTREME WEATHER RESPONSE AND REFERRALS

**North** Lea Kraitem - kraitem@unhcr.org

**Bekaa** Fawad Aamir - aamir@unhcr.org

**Beirut/ Mount Lebanon** Maguelone Arsac - arzac@unhcr.org

**South** Jean-Pierre Tuyishime - tuyishim@unhcr.org



(C) UNHCR / Ousama El Natour  
CRI distribution in Bisri, Mount Lebanon

## BEIRUT / MOUNT LEBANON

Situation update – 18:30

### Response ongoing:

- As of today, 73 informal settlements and 3,583 refugees have been assisted.
- Information was received that some homes in Costa Brava, Ouzai, and the Southern Suburbs of Beirut were affected by the storm. Three houses close to the seashore were damaged and the families living there were evacuated.
- Since the response began, a total of 215 weatherproofing kits, 446 plastic sheets, 1,933 mattresses, and 4,036 blankets have been provided. 214 families have received kitchen sets, jerry cans and solar lanterns. So far, 19 sites received drainage kits and 192 fuel cards have been distributed.

### Preparedness actions are ongoing:

- Rapid needs assessments are planned for tomorrow in informal settlements (76 sites) that are being affected by heavy winds and waves in the coastal area.

**Partners involved in the response:** MOSA, MOIM, MoSDA, UNHCR, UNDP, UNICEF, CARITAS, INTERSOS, Makzhoumi Foundation, NRC, LWR, IRC, Dorcas, Save the Children, SB Overseas, **Secours Islamique France**<sup>3</sup> and People in Need Slovakia.

## SOUTH

Situation Update – 22:00

### Heavy rains and wind has led to flooding and 12 new sites affected:

- As of today, 20 informal settlements and 1,931 individuals have been assisted with core relief items.
- A dewatering pump is now installed for two flooded sites in Ghaziye.
- Flooding and risk of landslides in Derb Es Seem has led to pre-emptive evacuation of the full site.
- Residents of a building basement are at risk of rising flood waters and coordination with the Civil Defense teams is ongoing.
- Rapid needs assessments were conducted both in coastal and mountainous areas.

### Preparedness actions are ongoing:

- Distribution of core relief items planned for nine sites.
- Derb Es Seem dewatering will start if the weather conditions improve.
- Rapid phone surveys will continue for newly affected sites.

**Partners involved in the response:** Governor's office, CISP, AVSI, NRC, ICRC, PU-AMI, LRC-DMU, IRC, SHEILD, INTERSOS, TdHL, ACF Spain, UNDP, UNICEF, UNRWA, UNHCR, UNIFIL, WVI, DPNA, Governor's Office, CISP, WFP, Mercy Corps, Caritas, **Zahrani Union of Municipalities, Civil Defense**<sup>3</sup> and Save the Children.

<sup>3</sup> New partners that joined the extreme weather response on January 16, 2019