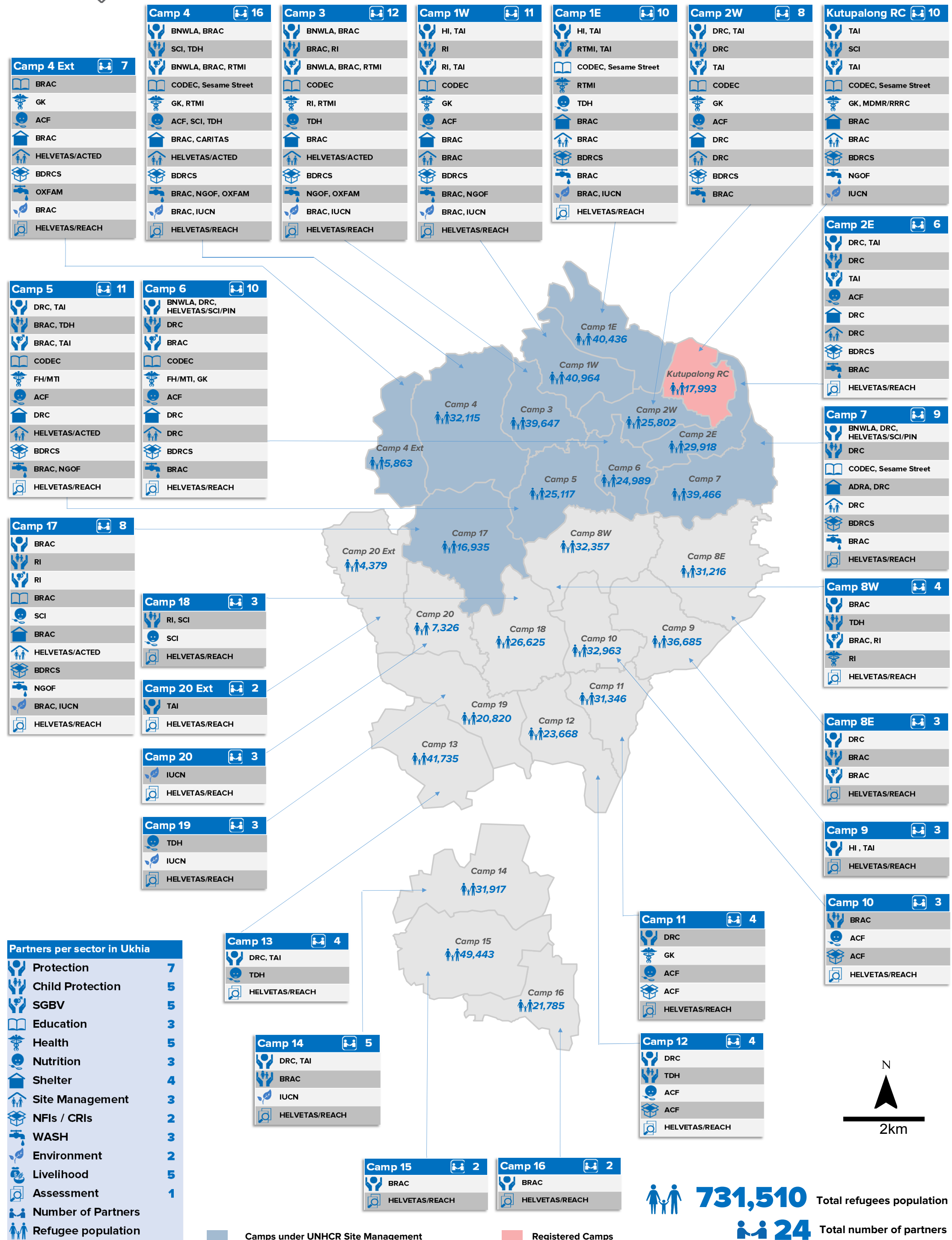


The boundaries and names shown and the designations used on this map do not imply official endorsement or acceptance by the United Nations. Source: UNHCR, RRC/UNHCR/Family Counting as of 31 December 2018

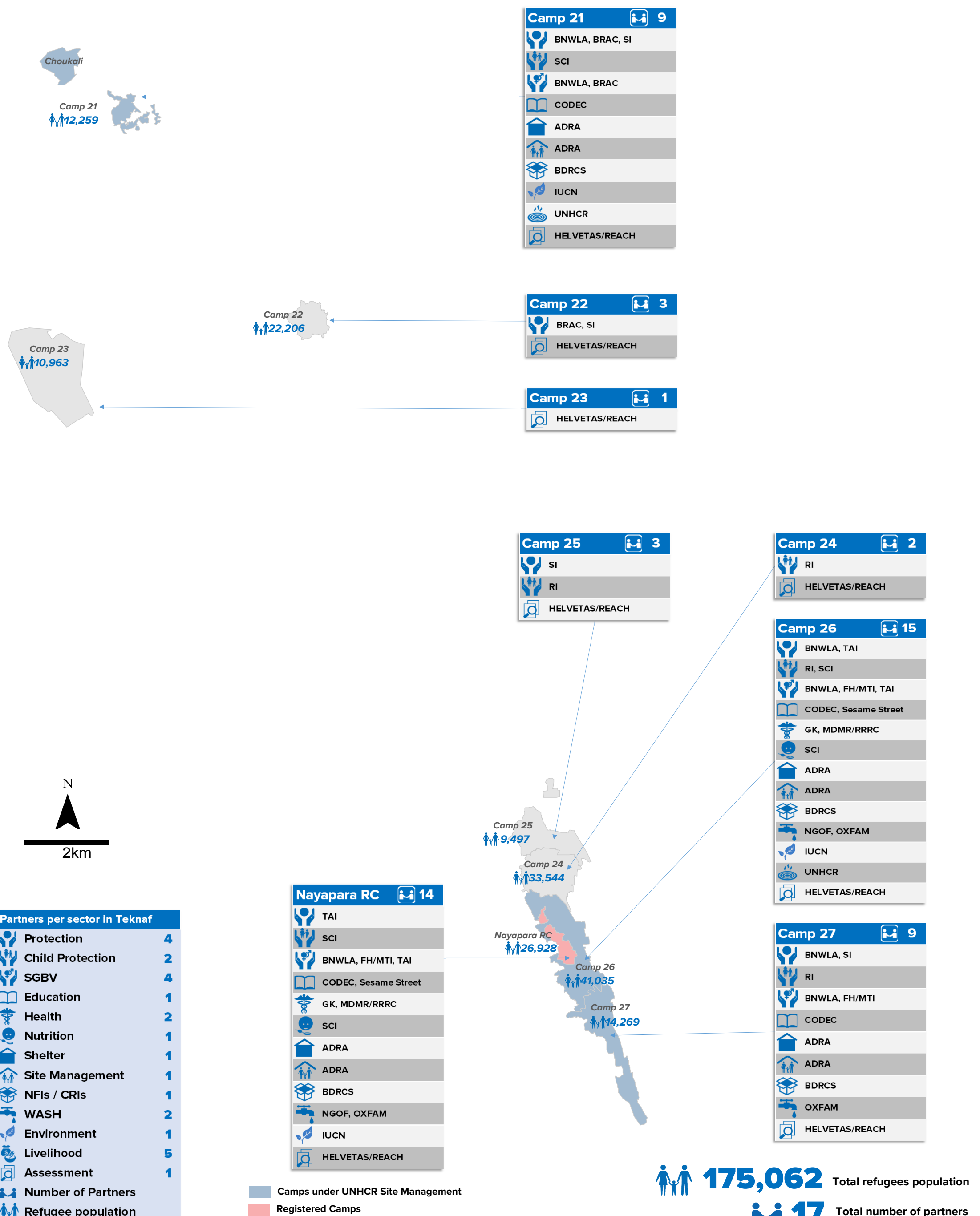
* Livelihood projects are implemented in host communities of the following five unions : Nhila, Baharchara, Whykong, Rajapalong, Palongkhali
 Protection activities are implemented in host communities of the following five unions : Nhila, Baharchara, Sabrang, Teknaf, Paurashava



Partners per sector in Ukhaia

Protection	7
Child Protection	5
SGBV	5
Education	3
Health	5
Nutrition	3
Shelter	4
Site Management	3
NFIs / CRIs	2
WASH	3
Environment	2
Livelihood	5
Assessment	1
Number of Partners	
Refugee population	

731,510 Total refugees population
24 Total number of partners



UNHCR & Partners Presence (3Ws) Matrix in Cox's Bazar

31 December 2018

ORGANIZATION	ACRONYM	Sectors														Assessment
		Protection	CP	GBV	Education	Health	Nutrition	Shelter	CCCM	NFIs/CRIs	WASH	Environment	Energy	Livelihood		
Action Contre La Faim	ACF						ACF			ACF						
Agency for Technical Cooperation and Development	HELVETAS/ACTED							HELVETAS/ACTED								
Adventist Development and Relief Agency	ADRA							ADRA	ADRA				ADRA			
Bangladesh Red Crescent Society	BDRCS									BDRCS						
Bangladesh National Women lawyers' Association	BNWLA	BNWLA		BNWLA												
Bangladesh Rehabilitation Assistance Committee	BRAC	BRAC	BRAC	BRAC	BRAC			BRAC	BRAC		BRAC	BRAC		BRAC		
Bangladesh Caritas Bangladesh	CARITAS							CARITAS								
Community Development Centre. Bangladesh	CODEC				CODEC											
Danish Refugee Council	DRC	DRC	DRC					DRC	DRC							
Food for Hungry International	FH/MTI			FH/MTI		FH/MTI										
Gonoshasthaya Kendra	GK					GK							GK			
Handicap International	HI	HI														
International Union for Cons. of Nature and Nat. Resources	IUCN										IUCN					
Forum NGO Forum Bangladesh	NGOF									NGOF			NGOF			
Oxford Committee for Famine Relief	OXFAM									OXFAM						
People In Need	HELVETAS/SCI/PIN	HELVETAS/SCI/PIN														
Joint initiative of IMPACT from ACTED and UNOSAT	HELVETAS/REACH													HELVETAS/REACH		
Relief International UK	RI		RI	RI		RI										
Research Training Management International	RTMI			RTMI		RTMI										
Save the Children	SCI		SCI					SCI								
Sesame street	Sesame Street				Sesame Street											
Solidarites International	SI	SI														
Tacniqal Assistance Incorporation	TAI	TAI		TAI										TAI		
Terre des Hommes	TDH		TDH					TDH								
Ministry Disaster Management & Relief	MDMR/RRRC					MDMR/RRRC										
UNHCR Direct Implementation	UNHCR											UNHCR				
Total Partners	25	BNWLA, BRAC, DRC, HI, HELVETAS/SCI/PIN, SI, TAI	BRAC, DRC, RI, SCI, TDH	BNWLA, BRAC, FH/MTI, RI, RTMI, TAI	BRAC, CODEC, Sesame Street	FH/MTI, GK, RI, RTMI, MDMR/RRRC	ACF, SCI, TDH	ADRA, BRAC, CARITAS, DRC	HELVETAS/ACTED, ADRA, BRAC, DRC	ACF, BDRCS	BRAC, NGOF, OXFAM	BRAC, IUCN	UNHCR	ADRA, BRAC, GK, NGOF, TAI	HELVETAS/REACH	
		7	5	6	3	5	3	4	4	2	3	2	0	5	1	

ACRONYM	Camps																											KTP RC	NYP RC						
	Camp 1E	Camp 1W	Camp 2E	Camp 2W	Camp 3	Camp 4	Camp 4 Ext	Camp 5	Camp 6	Camp 7	Camp 8W	Camp 8E	Camp 9	Camp 10	Camp 11	Camp 12	Camp 13	Camp 14	Camp 15	Camp 16	Camp 17	Camp 18	Camp 19	Camp 20	Camp 20 Ext	Camp 21	Camp 22			Camp 23	Camp 24	Camp 25	Camp 26	Camp 27	
ACF		x	x	x			x	x	x						x	x	x																		
HELVETAS/ACTED					x	x	x	x													x														
ADRA										x																					x	x		x	
BDRCS	x	x	x	x	x	x	x	x	x	x												x									x	x	x	x	
BNWLA					x	x				x																					x	x		x	
BRAC	x	x	x	x	x	x	x	x	x	x	x	x			x	x	x	x																	
CARITAS																																			
CODEC	x	x		x	x	x			x	x	x																					x	x	x	x
DRC			x	x					x	x	x				x	x	x	x																	
FH/MTI									x	x																								x	x
GK		x		x			x									x																		x	x
HI	x	x																																	
IUCN	x	x			x	x													x															x	x
NGOF		x			x	x			x																									x	x
OXFAM					x	x	x																											x	x
HELVETAS/SCI/PIN										x	x																								
HELVETAS/REACH	x	x	x	x	x	x	x	x	x	x	x	x	x	x	x	x	x	x	x	x	x	x	x	x	x	x	x	x	x	x	x	x	x	x	
RI		x			x						x											x	x										x	x	
RTMI	x				x	x																													
SCI																																			
Sesame Street	x																																		
SI																																			
TAI	x	x	x	x																															
TDH	x				x	x																													
MDMR/RRRC																																			
UNHCR																																			
25	10	11	6	8	12	16	7	11	10	9	4	3	3	3	4	4	4	5	2	2	8	3	3	3	2	9	3	1	2	3	15	9	10	14	