

# UNHCR Rwanda - Monthly Population Statistics

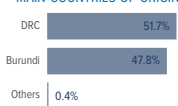
as of 31st January 2019



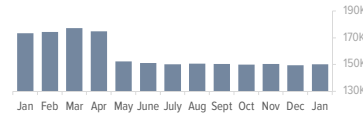
## KEY POPULATION STATISTICS

<b>150,194</b>	<b>Total Population</b>
<b>145,917</b>	<b>Individually Registered</b>
<b>3,742</b>	<b>Congolese asylum-seekers (Pending)</b>
<b>535</b>	<b>Group Registered (In Reception centres)</b>
<b>316</b>	<b>New Arrivals in January (Burundians)</b>
<b>41,693</b>	<b>Total number of Households</b>

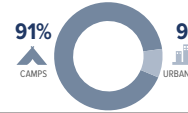
### MAIN COUNTRIES OF ORIGIN



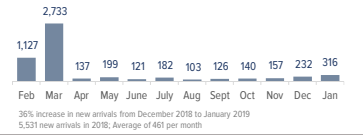
### MONTHLY POPULATION TRENDS | January '18 - January '19



### DISTRIBUTION OF POPULATION BY LOCATION TYPE

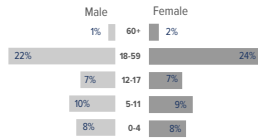
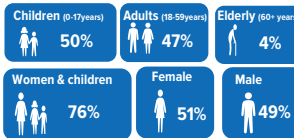


### MONTHLY TREND OF NEW ARRIVALS



Location	Group Registered	Individually Registered	Total Households
Kigeme	-	20,626	3,830
Gihembe	-	13,181	3,077
Kiziba	-	17,071	3,490
Nyabiheke	-	14,479	2,898
Mugombwa	-	9,397	2,017
Kigali	327	11,436	6,490
Bugesera RC	135	-	52
Nyanza RC	5	-	3
Nyarushishi TC	0	-	-
Gatore RC	15	-	10
Huye	53	759	386
Mahama	-	58,968	19,440
<b>Total</b>	<b>535</b>	<b>145,917</b>	<b>41,693</b>

## DEMOGRAPHICS



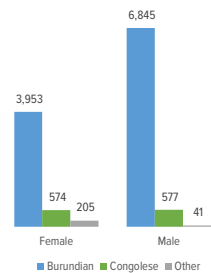
Age (years)	0-4	5-11	12-17	18-59	60+	Total	Percentage
Female	11,676	13,795	10,457	35,661	3,049	<b>74,638</b>	51.2%
Male	11,885	14,005	10,659	32,550	2,180	<b>71,279</b>	48.8%
<b>Total</b>	<b>23,561</b>	<b>27,800</b>	<b>21,116</b>	<b>68,211</b>	<b>5,229</b>	<b>145,917</b>	

16.1% 19.1% 14.5% 46.7% 3.6% Average family size: 3.5

## COUNTRIES OF ORIGIN

Country of Origin	0 - 4 years		5 - 11 years		12 - 17 years		18 - 59 years		60+ years		Total
	F	M	F	M	F	M	F	M	F	M	
Angola	2	-	-	-	-	-	4	1	1	-	8
Burundi**	6,081	6,216	6,106	6,428	4,135	4,403	15,286	19,082	1,010	777	69,524
Chad	-	-	-	-	1	1	1	3	-	-	5
DR Congo	5,583	5,655	7,669	7,562	6,316	6,247	19,886	13,426	2,034	1,397	75,775
Eritrea	-	-	-	1	-	-	1	5	-	-	8
Ethiopia	-	-	-	-	-	-	-	2	-	1	3
Guinea	-	-	-	-	-	-	-	1	-	-	1
Haiti	-	-	-	-	-	-	-	-	-	-	1
Rwanda*	10	12	12	13	6	4	481	24	4	3	569
Somalia	-	-	2	1	-	3	1	1	-	1	9
South Sudan	-	-	1	-	-	-	-	1	-	-	10
Tanzania	-	-	1	-	-	-	-	1	-	-	2
Uganda	-	-	1	-	-	-	-	-	-	1	2
<b>Total</b>	<b>11,676</b>	<b>11,885</b>	<b>13,795</b>	<b>14,005</b>	<b>10,457</b>	<b>10,659</b>	<b>35,661</b>	<b>32,550</b>	<b>3,049</b>	<b>2,180</b>	<b>145,917</b>

## URBAN REFUGEES (GENDER AND NATIONALITY)



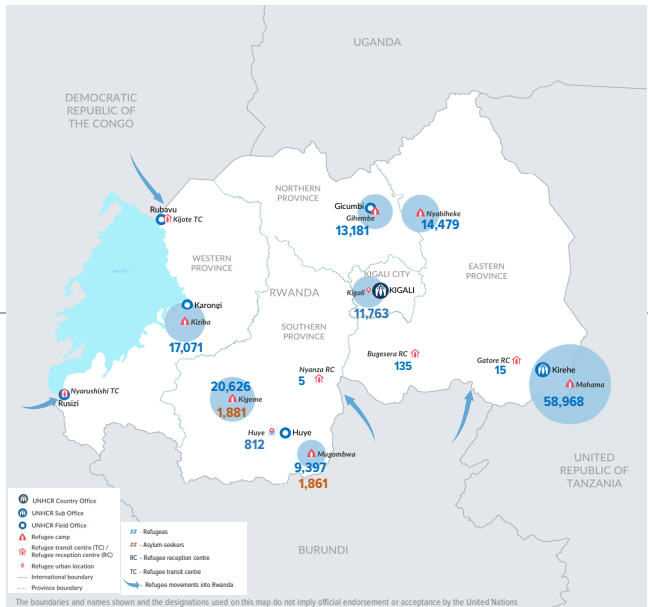
## REFUGEES\* FROM DEMOCRATIC REP. OF THE CONGO

Areas of origin	Count	Percentage
North Kivu	65,825	86.9%
South Kivu	6,792	9.0%
Katanga	1,310	1.7%
Maniema	133	0.2%
Orientale	80	0.1%
Kinshasa	70	0.1%
Kasai Oriental	23	0.0%
Bandundu	9	0.0%
Equateur	8	0.0%
Other	1,525	2.0%
<b>Total</b>	<b>75,775</b>	

## REFUGEES\* FROM BURUNDI

Areas of origin	Count	Percentage
Kirundo	38,696	55.7%
Bujumbura Mairie	11,618	16.7%
Muyinga	8,124	11.7%
Ngozi	2,807	4.0%
Karuzi	1,257	1.8%
Cibitoke	744	1.1%
Kayanza	670	1.0%
Ruyigi	452	0.7%
Gitega	286	0.4%
Bubanza	220	0.3%
Other	4,650	6.7%
<b>Total</b>	<b>69,524</b>	

## POPULATION DISTRIBUTION BY LOCATION IN RWANDA

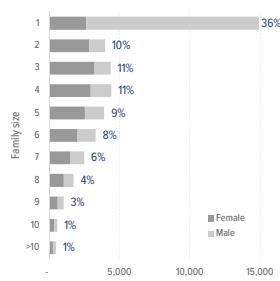


## SPECIFIC PROTECTION NEEDS

Specific Need	Count	Percentage
Child at risk	829	3.7%
Disability	4,288	19.2%
Family unity	564	2.5%
Older person at risk	1,983	8.9%
Serious medical condition	6,167	27.6%
SGBV	884	4.0%
Single parent/Single parent caregiver	2,667	12.0%
Legal & physical protection needs	476	2.1%
Torture	618	2.8%
Unaccompanied or separated child	1,833	8.2%
Woman at risk	2,004	9.0%
<b>Total</b>	<b>22,313</b>	

An individual may have more than one specific need

## FAMILY SIZE BREAKDOWN



Percentage represents proportion of family sizes to the total number of households

\*COO Rwanda represents Rwandan spouses of registered refugees

\*\*Total number of Burundian refugees is the individually registered plus the group registered (69524 + 535 = 70059)

Congolese asylum seekers in the camps are not included in the demographic and other breakdowns

For More Information: <http://data.unhcr.org/drc/country.php?id=182> and <http://data2.unhcr.org/en/situations/burundi/location/2006>