

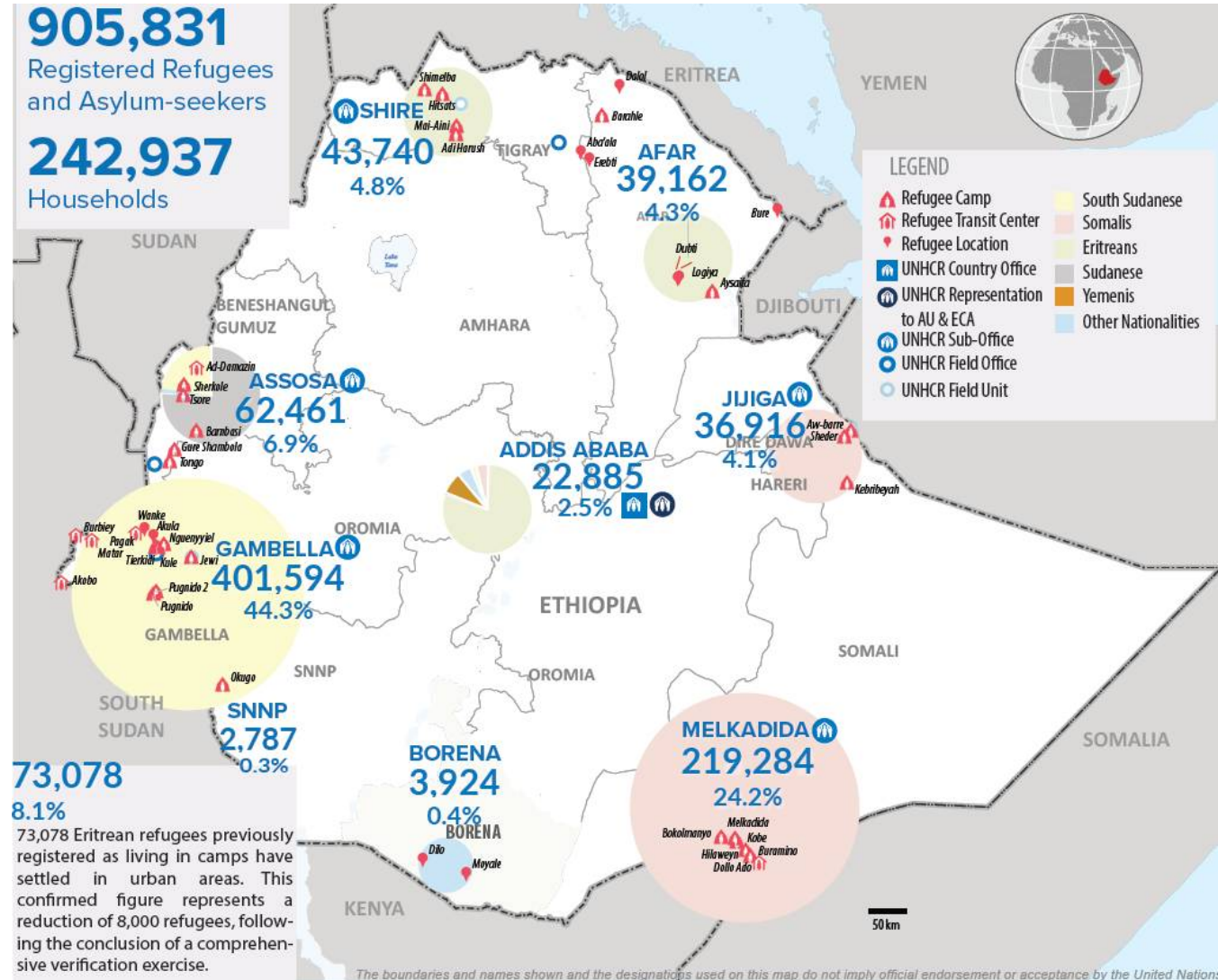
# Ethiopia Refugee Response 2020/2021 Contingency Planning

Refugee Coordination Group Meeting - 25 March 2019



# Overview

- L3 registration will continue until June 2019. It is expected that the overall population will **decrease by 20%**, varying from population to population. Refugees and IDPs will also be included in the national census.
- A total of **346,471** refugees registered so far have completed L3, representing **41.6%** of the estimated refugee population in the country.
- Total of **6,261** new arrivals during the first two month of 2019. 4,380 of whom were Eritrean refugees.



### Estimated Refugee Population at the end of 2019

Population Planning Group (PPG)	Immediately after L3	2019				
		New Arrivals	New Borns	Onward Movement	Other decrease	Total
Refugees and asylum seekers in urban areas, Kenyan Borenas and other POCs	18,650	7,000	158	19	3,701	22,088
Refugees and asylum seekers mainly from Sudan in Western Ethiopia	57,712	2,328	1,074	-	-	61,114
Refugees and asylum seekers from South Sudan in Western Ethiopia	275,702	10,986	4,410	91	-	291,007
Refugees and asylum seekers from Somalia in Ethiopia	210,205	714	2,508	-	-	213,427
Refugees and asylum seekers from Eritrea in Ethiopia	81,726	35,000	618	389	-	116,955
<b>Total</b>	<b>643,995</b>	<b>56,028</b>	<b>8,768</b>	<b>499</b>	<b>3,701</b>	<b>704,591</b>

### Estimated Refugee Population at the end of 2020

Population Planning Group (PPG)	2020					
	New Arrivals/Other increase	New Borns	VolRep	Onward Movement	Other decrease	Total
Refugees and asylum seekers in urban areas, Kenyan Borenas and other POCs	3,500	271	100	500	-	25,259
Refugees and asylum seekers mainly from Sudan in Western Ethiopia	3,000	2,146	3,000	-	-	63,260
Refugees and asylum seekers from South Sudan in Western Ethiopia	15,000	8,815	8,000	1,000	-	305,822
Refugees and asylum seekers from Somalia in Ethiopia	1,500	4,999	-	-	-	219,926
Refugees and asylum seekers from Eritrea in Ethiopia	20,000	1,227	-	1,000	-	137,182
<b>Total</b>	<b>43,000</b>	<b>17,458</b>	<b>11,100</b>	<b>2,500</b>	<b>-</b>	<b>751,449</b>

### Estimated Refugee Population at the end of 2021

Population Planning Group (PPG)	2021					
	New Arrivals/Other increase	New Borns	VolRep	Onward Movement	Other decrease	Total
Refugees and asylum seekers in urban areas, Kenyan Borenas and other POCs	3,500	271	50	2,000	-	26,980
Refugees and asylum seekers mainly from Sudan in Western Ethiopia	1,000	2,146	8,000	-	800	57,606
Refugees and asylum seekers from South Sudan in Western Ethiopia	10,000	8,815	15,000	8,000	2,000	299,637
Refugees and asylum seekers from Somalia in Ethiopia	1,500	4,999	-	1,000	1,000	224,425
Refugees and asylum seekers from Eritrea in Ethiopia	7,000	1,227	-	6,000	4,000	135,409
<b>Total</b>	<b>23,000</b>	<b>17,458</b>	<b>23,050</b>	<b>17,000</b>	<b>7,800</b>	<b>744,057</b>

# Overview

- Evolving [political and socio-economic](#) context within Ethiopia.
- The new [refugee proclamation](#) was adopted 17 January 2019, paving the way for social economic inclusion of refugees.
- The proclamation and rollout of the [CRRF](#) have raised concerns in certain refugee hosting areas as it is perceived as a possible pathway to local integration and naturalization.
- The [National Comprehensive Refugee Response Strategy](#) is currently being developed by the government and will lead to the implementation of the CRRF in all refugee hosting areas.
- [ARRA change process](#) has led to its designation as an independent agency under the Ministry of Peace.

