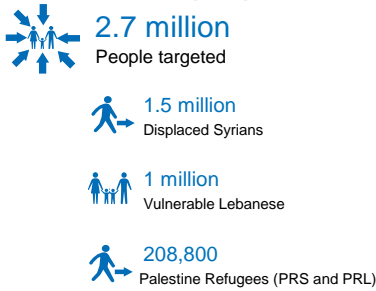


2019 February Statistical Dashboard

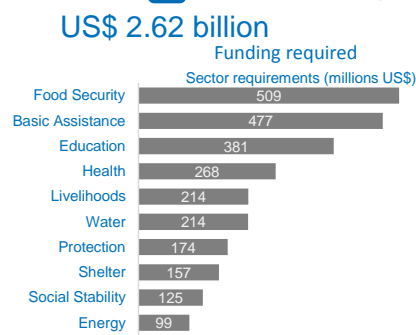


The monthly dashboard summarizes the progress made by partners involved in the Lebanon Crisis Response Plan (LCRP) and highlights trends affecting people in need. Partners in Lebanon are working to: 1) ensure protection of vulnerable populations; 2) provide immediate assistance to vulnerable populations; 3) support service provision through national systems; and 4) reinforce Lebanon's economic, social, institutional and environmental stability. Reported progress towards targets is cumulative since January 2019, unless otherwise specified.

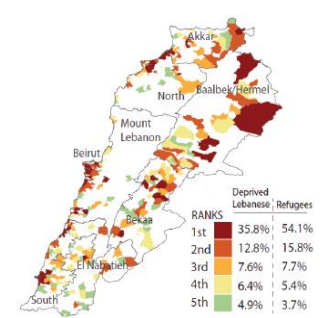
2019 Planning Figures



2019 Funding



251 Most Vulnerable Cadastres



Basic Assistance		This month:	Partners Reporting	15
			Population reached	425,402
# of households receiving multi-sector/ purpose cash transfers (monthly target)*		66,469 /		187,269
Total USD amount distributed as regular multi-sector/purpose cash (Leb, Syr & Pal)		\$21.7m /		\$283.9m
# of households receiving seasonal cash grants or vouchers		8,856 /		237,399
Total amount of seasonal cash distributed in USD (Leb, Syr & Pal)		\$3,415,240 /		\$152.2m
Total USD amount injected into economy in forms of cash assistance (seasonal + regular)		\$25.1m /		\$436.1m

* Vulnerable Lebanese, Syrian refugees and Palestine refugees. Population reached includes families targeted by UNICEF.

Syrian refugees < MEB (\$114/person/month) ¹⁹	68%
Syrian refugees < SMEB (\$87/person/month) ¹⁹	51%
Lebanese families receiving \$175 MPC grants	120
Palestinian families receiving \$100 MPC grants	8,608
Syrian families receiving \$175 MPC grants	57,859

MPC: multi-purpose cash

Education		This month:	Partners Reporting	18
			Population reached	19,206
# of children and youth whose registration fees for public formal education are partially or fully subsidised		448,744 /		497,171
# of children and youth whose registration fees for regulated NFE programmes are partially or fully subsidised		9,164 /		78,000
# of children and youth benefitting from remedial or homework support programs		7,026 /		70,000

% of school-aged refugees out of formal education in 2017 ³	59%
Non-Lebanese students in basic education enrolled in the first shift in 2017 ³	1 in 3
% of non-Lebanese among all students enrolled in first shift basic education in 2017 ³	32%
% of non-Lebanese among all students enrolled in public schools in basic education in 2017 ³	50%

Water		This month:	Partners Reporting	14
			Population reached	11,014
# of affected people assisted with improved access to adequate quantity of safe water for drinking and for domestic use [e.g. public water supply system improvements]*		2,475 /		1,146,900
# of affected people assisted with improved access to safely managed wastewater services [e.g. public wastewater network augmentations]*		0 /		797,500
# of affected people assisted with temporary access to adequate quantity of safe water for drinking and water for domestic use [monthly target; e.g. water trucking, on-site water treatment]		188,863 /		241,550
# of affected people with access to improved safe sanitation in temporary locations [monthly target; e.g. installation of latrines, septic systems, desludging]		190,843 /		262,150
# individuals who have experienced a WASH behaviour change session/activity		83,952 /		275,800

*Activities may focus on one or several aspects of a system (e.g. improving the efficiency of the water supply through a network repair programme), but households may still not have safe water when needed.

% population in Lebanon without access to safely managed drinking water ¹⁸	64%
% of all Lebanon's sewage not receiving secondary (biological) treatment ⁹	97%
% Syrian refugee families with no access to improved drinking water sources ¹⁸	22%
% Syrian refugee families with no access to improved sanitation facilities ¹⁸	14%
% Syrian refugee families without access to private sanitation facilities ¹⁸	39%
% Syrian refugee families with no access to personal hygiene items ¹⁸	13%

Food Security		This month:	Partners Reporting	32
			Population reached	764,846
# of vulnerable people reached with food assistance through various modalities (monthly target)		817,003 /		913,406
Total USD transferred as cash for food		\$38.8m /		\$274.2m
# of farmers with enhanced farming practices and production		0 /		21,678
# of youth supported with employability skills training in agriculture fields/ enrolled in basic literacy and numeracy		30 /		2,000
# of individuals supported for seasonal agricultural labor/casual labor		3,853 /		7,500
# of individuals trained on good nutritional practices/benefitting from microgardens		4,588 /		10,000

% Syrian refugee families with some level of food insecurity ¹⁹	90%
% Syrian refugee families are moderately to severely food insecure ¹⁹	34%
% Syrian refugee families depending on food voucher/e-card for income source ²	40%
% Lebanese families vulnerable to food insecurity ⁴	10%
% Lebanese farmers in need of agriculture support ⁴	73%
% PRS population who is food insecure ⁵	95%

Energy		This month:	Partners Reporting	1
			Population reached	150
# households benefitting from renewable energy equipment (solar water heaters, pico solar system, etc.)		0 /		196,575
# municipalities or informal settlements provided with off-grid lighting		0 /		38
# Renewable Energy power generation systems installed for communities and/or institutions		0 /		25
# individuals reached through installation of necessary equipment to reinforce the distribution network		225 /		277,140

Power generation required to cater for the daily electricity needs of displaced Syrians ¹⁵	486 MW
Power added to the grid since 2010 by MoEW	715 MW
Percentage of energy supplied to displaced Syrians out of total energy supplied in Lebanon ¹⁵	33%

Health	This month:	Partners Reporting	25		
		Population reached	68,658		
# of subsidized primary health care consultations provided		241,192 /	2,150,000	% Syrian refugees not able to access needed primary healthcare in past 6 months ¹⁹	13%
# of persons assisted with their hospital bills		12,312 /	119,009	% Syrian refugees unable to access needed secondary healthcare in past 6 months ¹⁹	23%
# of primary health care staff receiving salary support at central, peripheral and PHC level		49 /	250	Syrian refugee families' monthly health-related expenditure ²	\$52
				Syrian refugee families' monthly health-related expenditure share ²	13%

Livelihoods	This month:	Partners Reporting	13		
		Population reached	6,380		
# of MSMEs & cooperatives supported through financial/non-financial services or technology transfer		423 /	3,670	% of Lebanese families registered with NPTP with access to full-time employment ⁶	13%
# of targeted vulnerable people working on public infrastructure/ environmental assets upgrading		3,981 /	7,530	% of Syrian refugee families living below the poverty line ¹⁹	68%
# of people provided with market based skills training		872 /	10,000	% of Syrian children at work ⁷	17.5%
				% of Lebanese children at work ⁷	5%

Protection	This month:	Partners Reporting	43		
		Population reached	99,631		
# of individuals who benefitted from legal counseling, assistance and representation regarding legal stay		4,053 /	40,000	Total registered Syrian refugees ¹	947,063
# of individuals who benefitted from counseling, legal assistance and legal representation regarding civil registration including birth registration, marriage		11,513 /	100,000	% of households headed by females ¹⁹	18.0%
# of individuals benefitting from community-based interventions		417 /	67,640	% of Syrian refugee families reporting that all members have legal residency permits ¹⁹	18%
# of individuals trained, supported, and monitored to engage in community-based mechanisms		959 /	5,201	% of families reported having at least one member with specific needs ¹⁹	64%
# of individuals with specific needs receiving specific support (non-cash)		1,125 /	14,658	% of birth registered with the Foreigners Registry ¹⁹	21%
# of women, girls, men and boys at risk and survivors accessing SGBV prevention and response services in safe spaces		12,624 /	140,000		
# of women, girls, men and boys sensitized on SGBV		28,875 /	286,750		
# of boys and girls receiving case management services and assisted through Child Protection focused psychosocial support		5,081 /	24,000		
# of caregivers engaged in activities to promote wellbeing and protection of children		4,390 /	29,262		
# of boy and girls boys engaged in Community based Child Protection activities		6,365 /	91,445		

Shelter	This month:	Partners Reporting	12		
		Population reached	10,345		
# of people benefitted from weatherproofing and/or maintenance of makeshift shelters within informal settlements, residential and non-residential buildings		19,706 /	208,800	% of Syrian refugee families living in substandard shelter conditions ¹⁹	55%
# of people benefitting from Rehabilitation /Upgrade/Repair of substandard buildings into adequate shelters		700 /	297,164	% of Syrian refugee families living in informal settlements ¹⁹	19%
# of people benefitting from upgrade of common areas within substandard residential buildings		3,467 /	30,000	in non-residential buildings (worksites, garages, etc.) ¹⁹	15%
# of individuals received fire fighting kits and awareness sessions in informal settlements and substandard buildings		2,669 /	300,000	Average cost for rent per household for Syrian refugees ¹⁹	\$182

Social Stability	This month:	Partners Reporting	5		
		Population reached	-		
# of municipalities receiving Community Support or Basic Service Projects		23 /	175	% people who agree presence of Syrian refugees places too much strain on Lebanon's resources (e.g. water, electricity) ¹⁰	90%
# of municipalities benefiting from improved integrated solid waste management systems & approaches		14 /	55	# cadastres identified as most vulnerable ¹¹	251
# new dispute resolution and conflict prevention mechanisms established		28 /	56	# of vulnerable cadastres where population has increased by 50% or more ¹¹	114
# youth participating in social stability initiatives		100 /	40,000	% people who believe Lebanese people have been good hosts to refugees since 2011 ¹⁰	91% ¹³
# of partners staff trained on conflict sensitivity		88 /	300	% people reporting 'no tensions' between Lebanese and Syrians in their area ¹⁰	3% ¹⁴

1. UNHCR registration data as of 31 January 2019.
 2. 201 'Vulnerability Assessment of Syrian Refugees in Lebanon (VASyR).
 3. MEHE - 2017.
 4. Food Security and Livelihoods Assessment of Lebanese Host Communities FSLA 2015.
 5. AUB UNRWa 2015.
 6. MoSA NPTP Database.
 7. ARK Survey (Wave 1,2&3)
 8. UNICEF (2016), Rapid Assessment for Large & Medium Scale Waste Water Treatment Plants across the Lebanese Territory.
 9. Activity Info Partner Reports - 2018.
 10. UNDP - ARK Narrative Report - Regular Perception Surveys on Social Tensions throughout Lebanon.
 11. Inter-Agency 251 most vulnerable cadastres, <http://data.unhcr.org/syrianrefugees/download.php?id=8698>
 12. 93% of Lebanese and 77% of Syrian respondents.
 13. 92% of Lebanese and 89% of Syrian respondents.
 14. 2% of Lebanese respondents and 11% of Syrian respondents.
 15. Lebanon, Ministry of Energy and Water and UNDP (2017), The Impact of the Syrian Crisis on the Lebanese Power Sector and Priority Recommendations.
 16. Lebanon, Ministry of Energy and Water (June 2010), Policy Paper for the Electricity Sector.
 17. UNDP (2017), 2016 Solar PV Status Report for Lebanon.
 18. WHO/UNICEF (2016), Joint Monitoring Program Lebanon water quality survey. Safely managed drinking water is 1) from an improved water source, 2) that is located on premises, 3) available when needed, and 4) free from faecal and priority chemical contamination.
 19. 2018 Vulnerability Assessment of Syrian Refugees in Lebanon (VASyR).