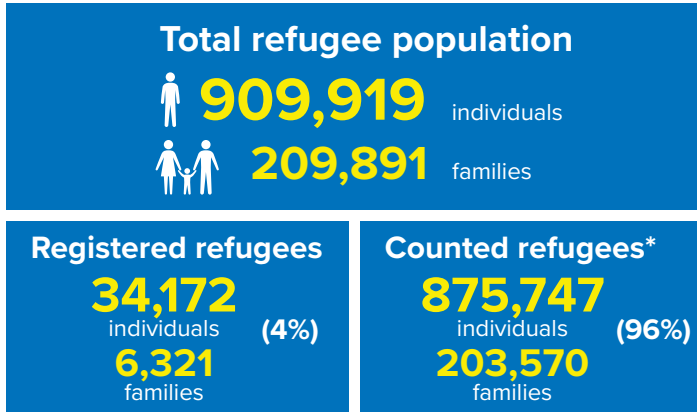
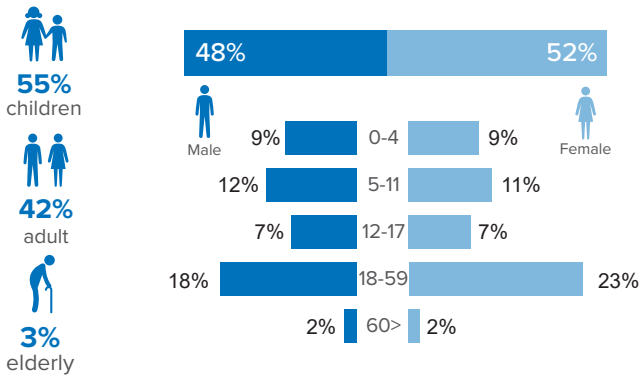


Refugee population figure

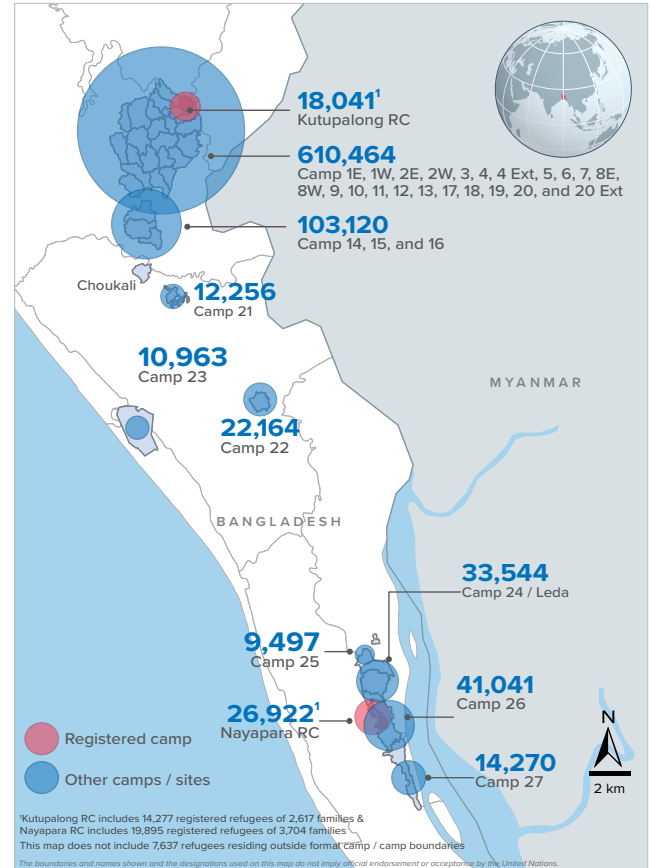


* Some refugees living in host communities and in certain locations beyond the camp boundaries may not have been counted.

Demography

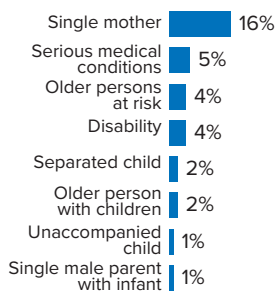


Refugee population density



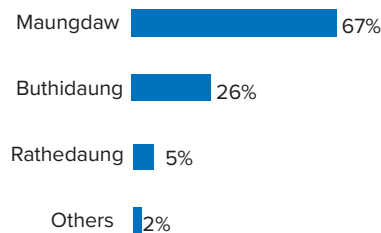
Specific needs

31% of the families have been identified with at least one protection vulnerability*



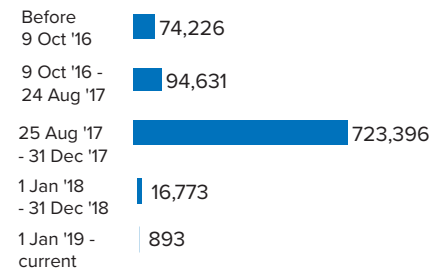
Place of origin

67% of the Rohingya refugees comes from Maungdaw Township



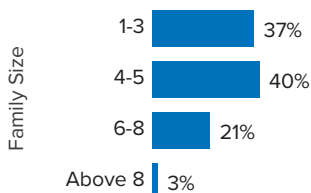
Period of arrival

81% of current population arrived between Aug. 2017 to date



Family size breakdown

40% of the families have a standard family size of 4-5 persons



Linking exercise

The Linking Exercise, conducted from December 2017 until February 2018, was a collaborative effort between the Government of Bangladesh and the United Nations High Commissioner for Refugees that aimed to merge the family based Rohingya population data collected through the Family Counting Exercise with attributes of the individual Rohingya population data collected by the Ministry of Home Affairs.

The exercise was conducted with a view to creating a unified dataset with individual data grouped into families which will be used to better protect and assist families.

*Figures are the percentage of total families with at least one person with a specific need. More than one specific need may be present within one family.

Age and gender breakdown by camp/site

Camp	Infant female below 1	Infant male below 1	1-4 Children female	1-4 Children male	5-11 Children female	5-11 Children male	12-17 Children female	12-17 Children male	18-59 Adult female	18-59 Adult male	60+ Elderly female	60+ Elderly male	Total Families	Total Individuals
Camp 15	947	898	3,546	3,695	5,301	5,478	3,424	3,604	11,538	9,192	908	904	11,182	49,435
Camp 13	724	771	3,096	3,215	4,517	4,785	2,776	2,858	9,811	7,755	742	685	9,789	41,735
Camp 26	693	617	3,133	3,134	4,750	5,204	2,977	2,777	9,807	6,759	635	555	9,398	41,041
Camp 1W	759	761	2,936	2,967	4,426	4,509	2,692	2,783	9,661	7,778	867	748	9,456	40,887
Camp 1E	675	744	2,839	2,987	4,330	4,527	2,685	2,781	9,463	7,832	811	704	9,303	40,378
Camp 3	698	741	3,025	3,131	4,235	4,446	2,522	2,727	9,429	7,367	698	585	9,206	39,604
Camp 7	691	715	3,036	3,158	4,287	4,632	2,618	2,664	9,290	7,213	695	618	9,370	39,617
Camp 9	623	607	2,758	2,941	3,998	4,060	2,588	2,496	8,687	6,974	720	668	8,672	37,120
Camp 24	506	521	2,280	2,490	4,027	4,149	2,305	2,402	8,003	5,904	543	414	7,761	33,544
Camp 10	614	595	2,587	2,557	3,379	3,721	2,120	2,061	7,695	6,089	601	573	7,649	32,592
Camp 8W	561	514	2,646	2,568	3,492	3,707	2,059	2,207	7,596	6,126	595	548	7,465	32,619
Camp 4	576	630	2,447	2,580	3,600	3,709	2,052	2,063	7,607	5,958	520	398	7,891	32,140
Camp 14	561	585	2,310	2,564	3,388	3,735	2,254	2,241	7,296	5,829	607	529	7,049	31,899
Camp 11	547	574	2,357	2,388	3,374	3,581	2,130	2,183	7,242	5,918	531	494	7,118	31,319
Camp 8E	526	514	2,223	2,361	3,340	3,379	2,176	2,165	7,304	5,830	584	525	7,202	30,927
Camp 2E	573	523	2,367	2,415	3,311	3,458	1,941	1,850	7,195	5,490	519	487	7,237	30,129
Nayapara RC*	86	90	1,536	1,611	2,957	3,002	2,286	2,323	7,070	5,092	456	413	5,704	26,922
Camp 18	454	494	2,191	2,212	2,832	2,955	1,768	1,667	6,342	4,964	356	358	6,498	26,593
Camp 2W	440	429	1,926	2,006	2,876	3,155	1,612	1,641	6,020	4,738	503	406	5,920	25,752
Camp 5	438	460	1,966	2,024	2,779	2,833	1,567	1,635	5,938	4,616	465	414	6,044	25,135
Camp 6	507	466	1,976	2,087	2,710	2,915	1,469	1,532	5,847	4,572	431	361	5,815	24,873
Camp 12	402	391	1,752	1,870	2,539	2,795	1,694	1,635	5,496	4,264	439	380	5,258	23,657
Camp 22	407	379	1,588	1,799	2,546	2,613	1,670	1,657	4,839	3,955	378	333	4,585	22,164
Camp 16	436	405	1,608	1,700	2,346	2,579	1,525	1,433	5,015	4,029	386	324	4,880	21,786
Camp 19	334	318	1,594	1,674	2,249	2,497	1,438	1,465	4,860	3,776	346	284	4,821	20,835
Kutupalong RC*	80	58	1,024	1,194	1,912	2,040	1,464	1,463	4,690	3,617	239	260	3,546	18,041
Camp 17	266	300	1,426	1,443	1,852	1,986	1,024	1,026	4,034	3,049	244	238	4,004	16,888
Camp 27	237	218	1,094	1,148	1,674	1,712	1,030	1,061	3,307	2,386	218	185	3,150	14,270
Camp 21	223	211	901	957	1,350	1,408	759	798	2,961	2,367	185	136	3,010	12,256
Camp 23	181	199	808	845	1,451	1,491	632	650	2,687	1,690	170	159	2,661	10,963
Camp 25	140	158	710	701	1,105	1,189	742	685	2,209	1,578	168	112	2,143	9,497
Camp 20	138	140	582	657	849	867	401	448	1,794	1,324	122	98	1,770	7,420
Camp 4 Extension	94	111	460	502	637	669	339	348	1,404	1,114	86	98	1,419	5,862
Camp 20 Extension	84	68	362	380	470	478	265	232	1,075	850	60	58	1,076	4,382
No camp**	148	145	686	650	861	866	375	413	1,840	1,469	109	75	1,839	7,637
Total	15,369	15,350	67,776	70,611	99,750	105,130	61,379	61,974	215,052	167,464	15,937	14,127	209,891	909,919

*Kutupalong RC includes 14,277 registered refugees of 2,617 families & Nayapara RC includes 19,895 registered refugees of 3,704 families

**This represents refugees residing outside formal camp boundaries

Population figures by period of arrival

Arrival Period	Before 09 Oct 2016		09 Oct 2016 - 24 Aug 2017		25 Aug 2017 - 31 Dec 2017		01 Jan 2018 - 31 Dec 2018		01 Feb 2019 - Current date		Total Families	Total Individuals
Camp	Total Families	Total Individuals	Total Families	Total Individuals	Total Families	Total Individuals	Total Families	Total Individuals	Total Families	Total Individuals		
Camp 15	11	43	762	3,377	10,395	45,964	14	51	-	-	11,182	49,435
Camp 13	13	50	786	3,430	8,915	37,951	75	304	-	-	9,789	41,735
Camp 26	72	352	828	3,682	8,060	35,113	438	1,894	-	-	9,398	41,041
Camp 1W	57	233	1,055	4,535	8,315	36,019	29	100	-	-	9,456	40,887
Camp 1E	101	437	1,637	7,054	7,530	32,762	35	125	-	-	9,303	40,378
Camp 3	32	147	953	4,205	8,194	35,141	27	111	-	-	9,206	39,604
Camp 7	968	4,228	1,184	5,027	7,128	30,019	90	343	-	-	9,370	39,617
Camp 9	77	327	1,641	6,713	6,928	29,991	26	89	-	-	8,672	37,120
Camp 24	2,173	10,526	523	2,210	5,049	20,756	16	52	-	-	7,761	33,544
Camp 10	27	106	849	3,535	6,742	28,836	31	115	-	-	7,649	32,592
Camp 8W	33	139	737	3,267	6,621	28,931	74	282	-	-	7,465	32,619
Camp 4	32	147	354	1,451	7,235	29,413	270	1,129	-	-	7,891	32,140
Camp 14	14	51	604	2,793	6,386	28,881	45	174	-	-	7,049	31,899
Camp 11	5	18	1,081	4,795	6,008	26,414	24	92	-	-	7,118	31,319
Camp 8E	44	186	840	3,652	6,290	26,973	28	116	-	-	7,202	30,927
Camp 2E	2,454	10,442	1,419	6,042	3,308	13,459	56	186	-	-	7,237	30,129
Nayapara RC*	3,748	20,066	248	968	1,672	5,782	36	106	-	-	5,704	26,922
Camp 18	13	51	186	758	6,271	25,675	28	109	-	-	6,498	26,593
Camp 2W	1,442	6,625	1,463	6,368	2,954	12,551	61	208	-	-	5,920	25,752
Camp 5	40	173	540	2,286	5,443	22,598	21	78	-	-	6,044	25,135
Camp 6	334	1,396	1,235	5,475	4,225	17,922	21	80	-	-	5,815	24,873
Camp 12	12	53	268	1,218	4,928	22,173	50	213	-	-	5,258	23,657
Camp 22	10	56	207	998	4,354	21,060	14	50	-	-	4,585	22,164
Camp 16	11	47	282	1,245	4,569	20,420	15	60	3	14	4,880	21,786
Camp 19	5	19	401	1,805	4,222	18,214	193	797	-	-	4,821	20,835
Kutupalong RC*	2,802	15,023	135	532	588	2,412	21	74	-	-	3,546	18,041
Camp 17	66	287	237	937	2,570	10,718	1,131	4,946	-	-	4,004	16,888
Camp 27	29	142	275	1,300	2,698	12,150	148	678	-	-	3,150	14,270
Camp 21	12	53	143	616	2,726	11,118	129	469	-	-	3,010	12,256
Camp 23	252	1,155	287	1,222	2,106	8,517	16	69	-	-	2,661	10,963
Camp 25	17	85	252	1,122	1,870	8,271	4	19	-	-	2,143	9,497
Camp 20	56	250	124	507	1,266	5,355	324	1,308	-	-	1,770	7,420
Camp 4 Extension	70	272	133	610	1,081	4,415	135	565	-	-	1,419	5,862
Camp 20 Extension	71	304	91	389	707	2,892	207	797	-	-	1,076	4,382
No camp**	176	737	119	507	1,078	4,530	257	984	209	879	1,839	7,637
Total	15,279	74,226	21,879	94,631	168,432	723,396	4,089	16,773	212	893	209,891	909,919

*Kutupalong RC includes 14,277 registered refugees of 2,617 families & Nayapara RC includes 19,895 registered refugees of 3,704 families

**This represents refugees residing outside formal camp boundaries

Population figures by specific needs

Camp	Families with separated children	Families with unaccompanied children	Families with a person with disability	Families with older person at risk	Families with older person at risk with children	Families with people with serious medical condition	Single male parents with infants	Single female parent	Families with people with specific needs
Camp 26	169	53	280	357	114	215	81	2,183	3,236
Camp 15	233	60	355	585	198	461	64	1,605	3,210
Camp 1E	174	43	557	457	314	479	57	1,164	2,934
Camp 7	229	47	378	391	250	469	96	1,365	2,891
Nayapara RC	172	41	568	156	51	1,158	36	1,148	2,747
Camp 13	244	79	310	392	207	345	63	1,424	2,806
Camp 1W	167	33	393	448	214	443	66	1,267	2,780
Camp 3	207	64	371	359	284	316	67	1,438	2,684
Camp 24	177	73	299	284	121	256	43	1,636	2,630
Camp 4	247	92	200	297	203	300	104	1,501	2,587
Camp 9	130	77	393	400	262	481	112	1,037	2,533
Camp 10	128	68	393	347	244	519	89	1,011	2,448
Camp 8E	157	66	306	339	218	386	89	1,077	2,271
Camp 2E	163	41	305	263	203	372	67	1,119	2,329
Camp 18	154	63	247	226	166	295	78	1,130	2,076
Camp 11	167	60	264	288	154	233	65	1,060	1,974
Camp 5	159	66	218	295	167	219	58	1,109	1,994
Camp 14	119	44	185	318	138	306	43	969	1,908
Camp 6	160	45	210	226	128	245	44	857	1,776
Camp 2W	109	22	296	263	145	299	61	822	1,820
Camp 8W	102	41	222	264	158	288	55	755	1,655
Kutupalong RC	54	18	363	86	34	790	6	565	1,555
Camp 12	81	33	141	202	102	138	32	769	1,453
Camp 19	122	33	191	215	81	117	45	756	1,408
Camp 16	93	22	166	201	81	159	35	703	1,338
Camp 17	105	21	144	156	80	119	41	711	1,255
Camp 22	72	19	156	157	78	153	16	585	1,123
Camp 27	55	13	99	88	34	63	21	727	1,023
Camp 23	50	12	72	97	43	69	11	752	1,020
Camp 21	67	24	110	98	32	105	35	513	904
Camp 25	38	23	75	83	33	87	18	493	754
Camp 20	27	14	74	70	41	74	18	285	539
Camp 4 Extension	15	10	55	48	37	52	13	176	391
Camp 20 Extension	20	5	32	25	24	36	12	130	283
No camp	22	4	33	43	11	29	9	141	411
Total	4,388	1,429	8,461	8,524	4,650	10,076	1,750	32,983	64,746