

# DR Congo

August 2019

**548,850** refugees and asylum seekers in DRC, among them 52% women.

**99.3%** of refugees in DRC live in rural areas, and 72.2% live outside refugee camps or settlements.

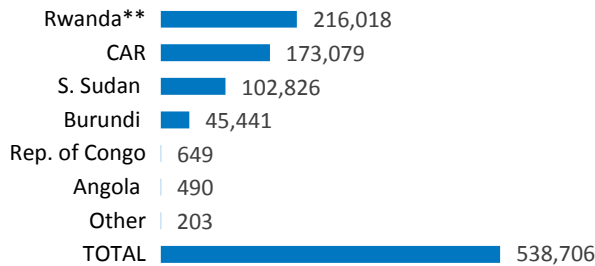
**886,881** refugees from DRC in Africa.

## POPULATION OF CONCERN

**538,706** refugees and **10,144** asylum-seekers in DRC

**4.49M\*** Internally Displaced Persons

Country of origin



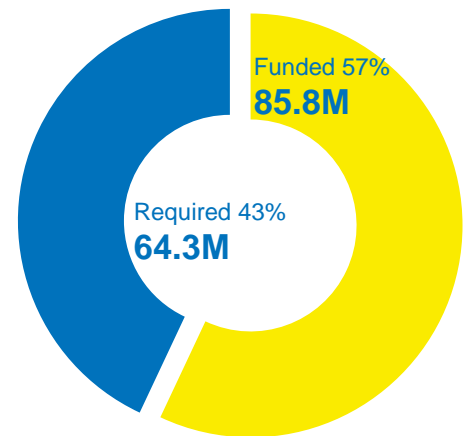
\* Source for IDP statistics: OCHA as of December 2017

\*\* The DRC Government presented the number of 245,052 Rwandan refugees as the outcome of a pre-registration exercise by the National Commission for Refugees from December 2014 to January 2015. Biometric registration of Rwandan refugees is ongoing.

## FUNDING AS OF 2 OCTOBER 2019

**USD 150.1 M**

requested for DRC in 2019



## UNHCR PRESENCE

### Staff:

National staff	291
International staff	91
Affiliate workforce and deployees	60
<b>Total</b>	<b>442</b>

### Offices:

- 1 Regional Representation in Kinshasa
  - 5 Sub-Offices: Aru, Gbadolite, Goma, Kananga, Lubumbashi
  - 7 Field Offices: Baraka, Bukavu, Kalemie, Libenge, Mbuji-Mayi, Monga, Tshikapa
  - 6 Field Units: Aba, Bili, Bunia, Dungu, Uvira, Zongo
- Total 19 offices**



A refugee from the Central African Republic practicing fishing to sustain his family. © UNHCR / J. Wessels

## Main activities – Refugees

### Protection

---

- UNHCR provides practical and technical support to national, provincial and local authorities, including the **National Commission for Refugees (CNR)**. UNHCR trains key counterparts on principles of refugee protection and international law. It collaborates with national authorities on the **biometric registration** of refugees, and facilitates the provision of **refugee ID documents** by Congolese authorities, as well as access to **civil registration**.
- UNHCR monitors **arrivals**, the **protection environment** (rule of law, civilian character of asylum, access to justice, non-refoulement), and specific needs, notably at borders and in refugee-hosting areas. UNHCR works towards child protection, including through support for **Best Interest Determination (BID)** assessments, and carries out detention monitoring.
- **Individual support and assistance** is also provided, including advocacy and the preparation and submission of urgent **resettlement** cases.
- UNHCR also facilitates **access to justice** through support for police in refugee-hosting areas, mobile courts, and the availability of legal aid.
- Lastly, UNHCR supports **access to land** for agriculture and housing, with a view of allowing alternatives to camps and supporting self-reliance wherever possible.

### Education

---

- UNHCR supports the integration of refugee children into the **national education system**. Due to a lack of resources, the focus is on primary education.
- Since schools lack resources to take in large numbers of refugee children, UNHCR provides **infrastructure support** (rehabilitation and construction), **equipment** (school uniforms, stationery, etc.), and **payments** of additional teaching staff and of school fees where necessary.

### Health

---

- UNHCR sets up and runs **health facilities** in camps, while also increasingly supporting existing local health facilities in line with its “alternatives to camps” approach.
- UNHCR supports authorities in developing **preparedness and response plans** for outbreaks, and works with authorities to ensure the availability of Minimum Initial Standard Packages (MISP) for reproductive health, and of HIV/AIDS packages in local health facilities.
- UNHCR also ensures the prevention of **undernutrition** and effective treatment of **acute malnutrition** in collaboration with authorities.

### Food Security and Livelihoods

---

- UNHCR promotes refugees’ self-reliance through **market-based livelihoods interventions**. Agricultural production is supported by ensuring **access to arable land** and providing agricultural inputs such as **seeds and tools**.

- UNHCR fosters **professional and vocational skills** for urban and rural refugees' self-employment. **Income-generation** is encouraged through the creation of viable business plans, and business and financial literacy training.
- UNHCR's livelihoods activities can also take the form of targeted **cash-based assistance** based on vulnerability criteria.
- UNHCR works in close collaboration with the World Food Program (WFP) and other UN partners, the Ministry of Agriculture, the World Bank-funded project PARSSA, and public and private companies.
- For a large part of the refugees, **Food aid** is provided by WFP, with support from UNHCR.
- UNHCR is working on an **agro-forestry model** for South Sudanese refugees and host populations, aiming at the sustainable economic integration of refugees, and income-generation benefiting the host community and developing the area, while reducing the carbon footprint.

### Water, Sanitation and Hygiene (WASH)

- UNHCR provides WASH support to refugees and host communities, with a three-fold **strategy of promoting** refugees' **self-reliance** in terms of water systems, ensuring that refugees have **access to water** without discrimination of gender or age, improving existing WASH services, and responding to **emergencies**.
- UNHCR **constructs and rehabilitates** water points (from water towers and wells, to natural water sources). Water Management Committees provide **maintenance and reparations** for water points.
- UNHCR provides **cash or materials** for refugees to build their own latrines and showers, along with sensitization and construction training.
- **Hygiene promotion activities** encourage refugees to adopt good hygiene practices.

### Shelter and Non-Food Items (NFIs)

- To ensure sustainable housing conditions, UNHCR promotes – wherever possible – **local construction materials** and a **community-based approach**, using conditional cash transfers as a preferred modality for shelter construction and rehabilitation. UNHCR's shelter strategy in DRC is centered around three priorities: to provide an emergency response, to support local integration, and to reinforce local capacities.
- UNHCR encourages the construction of **semi-durable shelters**, but does not exclude the use of emergency shelters in cases of acute and urgent need.
- UNHCR distributes **Non-Food Items**, such as kitchen sets, sleeping mats and mosquito nets, but provides cash for refugees to buy basic items whenever this is a viable option.

### Site management

- UNHCR and the National Commission for Refugees (CNR) collaborate on the application of UNHCR's **Policy on Alternatives to Camps**, which aims at avoiding encampment and gives refugees the opportunity to become active members of the community while contributing to its wealth.

- UNHCR currently supports 5 camps for Central African refugees, 4 settlements for South Sudanese refugees, and 1 camp and 1 settlement for Burundian refugees.
- Collaboration with the World Bank and UNDP on local governance, and with other development actors in refugee-hosting areas, is expected to facilitate a shift towards stronger **community-based responses** in the coming years.

### Access to energy

- UNHCR is committed to the **Safe Access to Fuel and Energy** (SAFE) initiative, seeking to ensure refugees' access to combustibles and energy for cooking, heating and electricity.  
Through partners, UNHCR organizes trainings and the production of **biomass briquettes** (an alternative, eco-friendly combustible) and **fuel-efficient stoves**. Sensitization campaigns on energy-saving are organized. UNHCR supports the use of solar energy in community infrastructure (for example, health centers).

### Durable solutions and reintegration

- UNHCR mainly supports two forms of durable solutions for refugees in DRC; **voluntary repatriation** and **local integration**. Although resettlements to third countries have been organized, this remains at a very limited scale. Over the past years, UNHCR has facilitated the voluntary repatriation of tens of thousands of **Rwandan refugees**.
- UNHCR has advocated for the issuance of **residence cards** for former refugees (Angolans, Rwandans).

### Logistics

- UNHCR has a **fleet of vehicles** to ensure that assistance to refugees is delivered in due time despite logistical challenges in DRC. To increase efficiency, UNHCR provides vehicles on loan to partners. Stocks of aid are also positioned in **warehouses** across the country. UNHCR works with UNHAS (UN Humanitarian Air Services) to ensure flights to refugee-hosting areas are available for the humanitarian community.
- Where necessary, UNHCR contributes to the **rehabilitation** of roads, bridges or other infrastructure in refugee-hosting areas.

### Multipurpose cash grants (MPGs)

- UNHCR provides multipurpose cash transfers to refugee households, to help them in meeting their **basic needs**, prevent **protection risks** and strengthen their **livelihoods**. Multipurpose cash transfers allow beneficiaries to choose the way they spend the money and respond to their own priority needs according to their own livelihoods strategies.

## Main activities – Internally Displaced Persons (IDPs)

### Protection

- UNHCR works with authorities to ensure the full **restoration of the rights** of IDPs and returnees, in areas such as the Kasai region and the provinces of Tanganyika, Haut-Katanga, Lualaba, Ituri, Mai Ndombe, Maniema, North Kivu and South Kivu.
- To inform the humanitarian response and ensure IDPs live in safety and dignity, UNHCR undertakes **protection monitoring** and related analysis in main displacement and return areas. The results are a source of information for the humanitarian community, and serve as the basis for **advocacy** to local and national authorities, the **prevention of and response to sexual and gender-based violence** (including through sensitization and advocacy), **individual protection interventions** such as the referral of victims to relevant legal, medical or psychosocial structures, and **cash assistance** for protection outcomes.
- UNHCR provides practical and technical support to national, provincial and local authorities. It conducts **trainings** with local authorities, members of the armed forces and police, as well as IDPs and host communities, to inform them on the rights of IDPs and their obligations towards them.
- As the lead of the **Protection Cluster**, UNHCR coordinates and supports the protection activities of various humanitarian actors, including by actively supporting sub-clusters and working groups.
- UNHCR facilitates the implementation of the UN Humanitarian Country Team's protection strategy.

### Health

- UNHCR advocates for IDPs' access to **HIV/AIDS prevention and treatment services**. Under the division of labor under UNAIDS, UNHCR has co-organised HIV rapid needs assessment in displacement regions.

### Water, Sanitation and Hygiene (WASH)

- Although WASH activities are not a main focus of UNHCR's IDP response in DRC, some activities are conducted based on **specific needs and gaps**. In Nord Kivu Province, UNHCR constructed emergency latrines, showers and garbage pits in 2018, and rehabilitated water sources for IDP sites after emergency needs were identified.

### Shelter and Non-Food Items (NFIs)

- UNHCR's three strategic shelter orientations for IDPs in DRC are to provide an **emergency response**, to support **returns or local integration** in displacement areas, and to **reinforce local capacities**.
- In terms of **emergency responses**, those sleeping in the open air, in public buildings and in host families are targeted. UNHCR favors **self-reconstruction and rehabilitation** with local materials, and IDPs and host communities' effective participation. UNHCR prioritizes conditional **cash transfers** as a modality to support shelter construction and rehabilitation.

- As the leader of the **Shelter Working Group** (SWG) in DRC, UNHCR also coordinates and supports other actors' shelter activities. Shelter remains a major underfunded need in DRC. Assessments by the SWG in 2018 showed that some 1.5 million people had their homes destroyed or damaged in eight of DRC's 26 provinces.

### Site management

---

- UNHCR supports the **management of official IDP sites** including in North Kivu Province and Ituri Province.
- UNHCR co-leads the **Camp Coordination and Camp Management (CCCM) Working Group** in Tanganyika and North Kivu provinces, jointly with IOM. Since 2018, the CCCM strategy focuses on solutions and support to local communities.

### Community empowerment and self-reliance

---

- To better protect IDPs and reduce risks of intercommunity conflict, UNHCR includes **host communities** into its programming. UNHCR reinforces local protection structures, and promotes peaceful coexistence, access to justice (for example, in case of conflicts over land and property), and the participation of IDPs in decision-making.
- UNHCR also supports **income-generating activities** with a community-based approach. For example in North Kivu province, UNHCR established communal fields, helping IDPs gaining access to agricultural lands, and contributing to durable solutions.

### Durable solutions

---

- To promote durable solutions for IDPs, UNHCR provides, among others, livelihoods and shelter assistance to **returned IDPs** or to those who settle permanently elsewhere, as well as **protection assistance**.
- UNHCR advocates for the Government's adoption of the **National Durable Solutions Strategy** which has been supported by the Humanitarian Country Team.
- UNHCR is conducting advocacy for the DRC to ratify the **2009 Kampala Convention** (African Union Convention for the Protection and Assistance of Internally Displaced Persons in Africa) and to transpose it to national law.

### Multipurpose Cash Grants (MPGs)

---

- (see relevant section on refugees)

## Main activities – Statelessness

### Protection

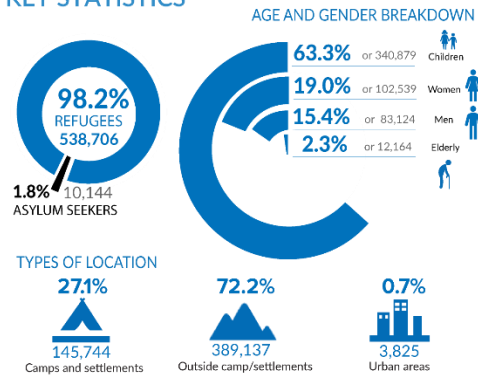
---

- As part of the fight against statelessness, UNHCR is advocating for the DRC Government to ratify the **1954 and 1961 UN conventions on statelessness**. UNHCR is also advocating with DRC's Ministry of Justice for the signing of decrees establishing a National Interministerial Technical Committee to combat statelessness in DRC.
- UNHCR advocates for the implementation by the DRC Government of the 2017 **Declaration of International Conference on the Great Lakes Region (ICGLR) Member States on the Eradication of Statelessness and its action plan**.
- UNHCR continues statelessness prevention activities, by facilitating **birth registrations** and the issuance of **birth certificates** in North Kivu, South Kivu, Nord-Ubangi, Sud-Ubangi, and Ituri provinces.



# 548,850

TOTAL NUMBER OF REFUGEES AND ASYLUM SEEKERS  
KEY STATISTICS



## REFUGEE POPULATION BY COUNTRY OF ORIGIN

Rwanda	216,018
CAR	173,079
S. Sudan	102,826
Burundi	45,441
Rep. Congo	649
Angola	490
Sudan	147
Others*	22
Somalia	18
Uganda	16

\* Others include Ivory Coast, Eritrea, Syria, Liberia, Chad, Sierra Leone, etc.

## REFUGEES FROM DRC IN AFRICA

# 886,881

TOTAL DRC REFUGEE POPULATION

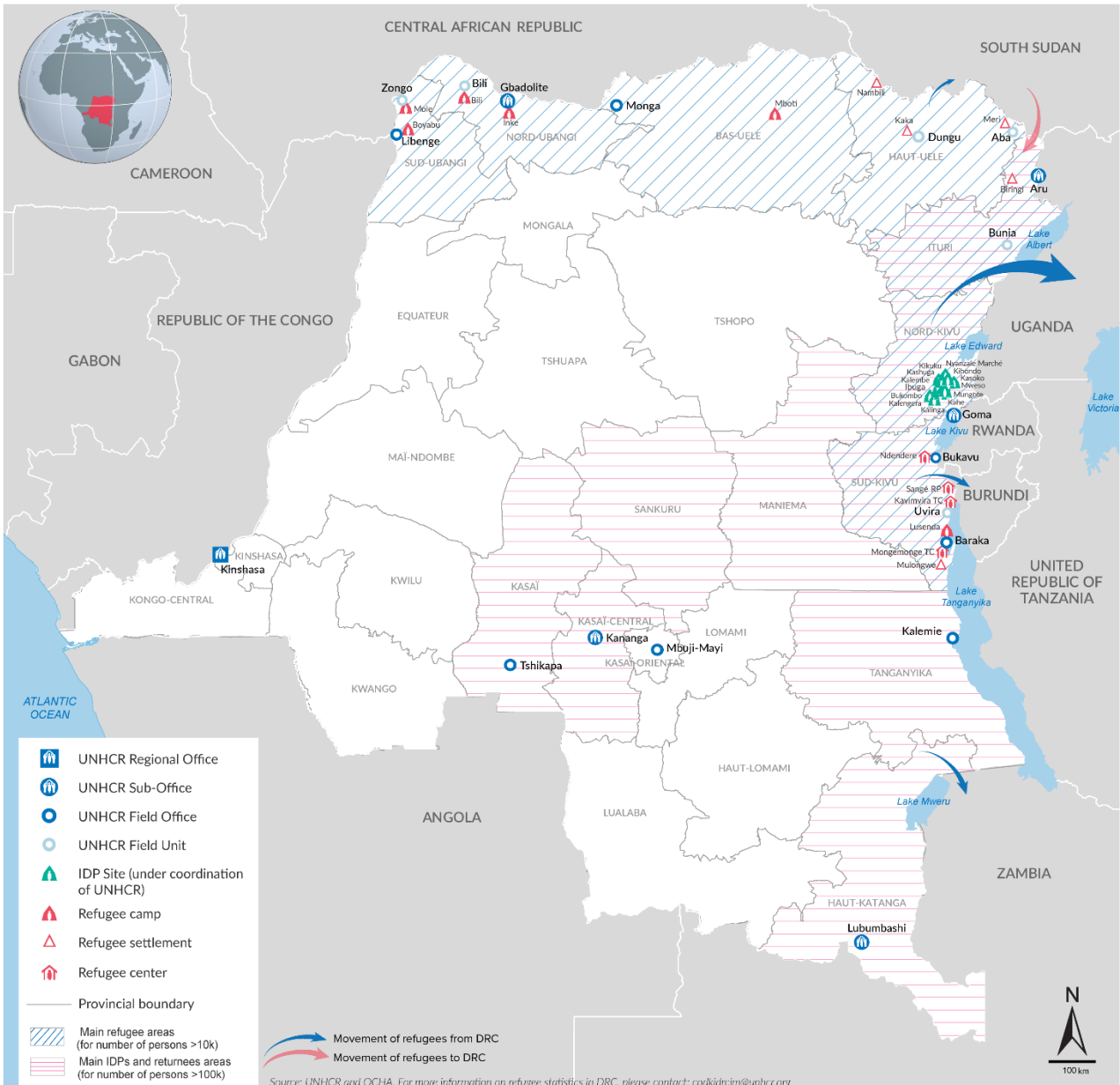
Uganda	376,111
Southern Africa*	111,117
Burundi	80,897
Tanzania	77,833
Rwanda	76,375
Other countries**	61,789
Zambia	44,917
Angola	37,553***
Republic of Congo	20,289

Source: UNHCR

\* Southern Africa includes Namibia, Botswana, Lesotho, Malawi, Zimbabwe, Mozambique, Madagascar, South Africa and the Kingdom of Eswatini.

\*\* Other countries include South Sudan, Kenya, Central African Republic and Chad.

\*\*\* For Angola, these figures are for July 2019 (the figures for August are not available).



The boundaries and names shown and the designations used on this map do not imply official endorsement or acceptance by the United Nations.

Printing date: 31 August 2019 Author: UNHCR - Kinshasa



## Working with Partners

- Together with the DRC Government, working closely with the National Commission for Refugees (CNR), UNHCR ensures international protection and delivery of multi assistance to persons of concern.
- UNHCR works with 16 national and international implementing partners: ACTIONAID, ACTED, ADES, ADRA, ADSSE, AIDES, AIRD, AMICOR, AJEDEC, CARITAS, CNR, INTERSOS, NRC, TSF, WAR CHILD NL and WAR CHILD UK.
- Coordination mechanisms: Within the cluster system, UNHCR leads the Protection Cluster and co-leads the Protection and Prevention component of the National Strategy on SGBV. UNHCR also leads the Shelter Working Group within the Shelter/NFI Cluster, co-leads the Camp Coordination and Camp Management (CCCM) Working Group jointly with IOM, and co-leads the National Cash Working Group jointly with UNOCHA.

## Donors

UNHCR, the UN Refugee Agency, is grateful for the support of:

### Donors for UNHCR operations in DRC in 2019

United States of America (28.4M) | CERF (3,7M) | European Union (3.2M) | Japan (2.5M) | Sweden (2.2M) | Finland (1.7M) | France (1,6M) | Canada (0,8M) | United Nations Foundation (0,4M) | Australia for UNHCR (0,4M) | International Olympic Committee (0.3M) | UNAIDS (0.04M)

### Donors of regional or sub-regional funds 2019

United States of America (54.3M) | Germany (13.1M) | Private Donors Australia (9.1M) | Private Donors Germany (5.3M) | Canada (4,6M) | Sweden (4M)

### Major donors of unearmarked funds in 2019

Sweden (90.4M) | Norway (44.5M) | Netherlands (37.5M) | Private Donors Spain (33M) | United Kingdom (31.7M) | Germany (26.7M) | Denmark (24.4M) | Private Donors Republic of Korea (17.3M) | Switzerland (15.1M)

Sweden (99.8M) | Private Donors Spain (54.5M) | Norway (44.5M) | Netherlands (37.5M) | United Kingdom (31.7M) | Private donors Korea (27.6M) | Germany (26.7M) | Denmark (24.4M) | Private Donors Japan (16.1M) | Switzerland (15.1M) | France (14M) | Private Donors Italy (12.7M) | Private donors Sweden (10.4M) | Ireland (10.2M)

## CONTACTS

David Nthengwe, Senior Regional External Relations Officer DRC, nthengwe@unhcr.org,  
Tel: +243 996 041 000, Cell +243 81 700 94 84

Simon Lubuku, Senior Public Information Associate DRC, lubuku@unhcr.org, Tel: +243 996 041 000, Cell +243 81 950 02 02

## LINKS

[DR Congo Emergency page](#) - [UNHCR DRC operation page](#) - [Facebook page](#) - [Twitter](#)