

WHO IS

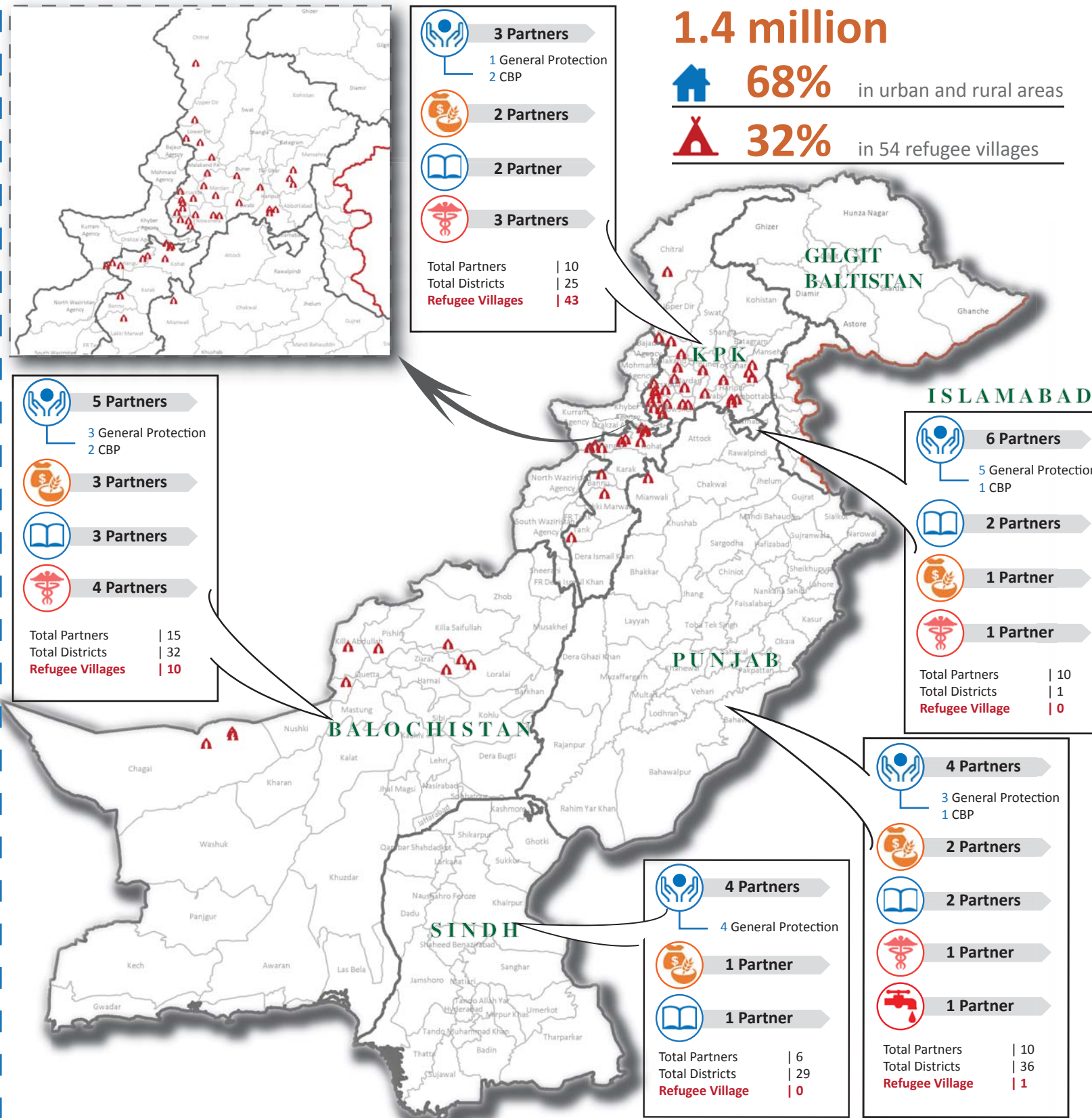
- | | |
|--|------|
| United Nations High Commissioner for Refugees (UNHCR) http://www.unhcrpk.org | UN |
| National Database & Registration Authority (NADRA) http://www.nadra.gov.pk | GOV |
| Ministry of Repatriation & Refugees, Islamabad (MoRR) | GOV |
| Chief Commissionerate of Afghan Refugees (CCAR) - CAR (Pun) - CAR (KP) - CAR (Bal) - ARRC | GOV |
| Ministry of Health/ Department of Health http://www.nhsr.org.pk | GOV |
| Water, Environment & Sanitation Society (WESS) http://wess.org.pk | GOV |
| National Vocational Technical Training Centre (NAVTTTC) http://www.navtttc.org | GOV |
| Drugs and Narcotics Educational Services for Humanity (DANESH) http://www.danesh.org.pk | GOV |
| International Catholic Migration Commission (ICMC) http://www.icmc.net | INGO |
| Society for Human Rights & Prisoners' Aid (SHARP) http://www.sharp-pakistan.org | NGO |
| Cursor of Development and Education, Pakistan (CODE) http://codepk.org | NGO |
| Pakistan Poverty Alleviation Fund (PPAF) http://www.pfaf.org.pk | NGO |
| Legends Society (LS) http://legendsociety.org | NGO |
| Society for Community Support in Primary Education (SCSPEB) http://www.scspeb.org | NGO |
| Taraqee Foundation (TF) http://taraqee.pk | NGO |
| Tameer-e-Khalq Foundation (TKF) http://www.tameerekhalaq.org | NGO |
| Inspire Pakistan (INSPIRE) http://inspirepk.org | NGO |
| Rural Empowerment and Institutional Development (REPID) http://www.repid.org.pk | NGO |
| The Frontier Primary Health Care Pakistan (FPHC) http://www.frontierphc.com | NGO |

In addition, a partnership with UN Sister Agencies and Government line departments

More information available on UNHCR: data portal <https://data2.unhcr.org/en/country/pak>

For Feedback Contact: UNHCR, Information Management Unit: Jaber@unhcr.org, Zahoor@unhcr.org
Sources: UNHCR Pakistan and Afghan National Registration (ANR) Database for Refugees Statistics

Doing WHAT and WHERE



Province	Sector	IPs	Districts Covered
Balochistan	Protection	NADRA	32
		WESS	4
		SEHER	1
		DANESH	1
	Livelihood	CAR (Bal)	6
		PPAF	1
		NAVTTTC	5
	Education	TF	1
		SCSPEB	4
		TKF	1
INSPIRE		1	
Health		LS	1
	TF	2	
	TKF	2	
	MoH-DoH	32	
Islamabad	Protection	SHARP	1
		ICMC	1
		REPID	1
		MoRR	1
		CCAR	1
	CODE	1	
Livelihood	NAVTTTC	1	
Education	INSPIRE	1	
KPK	Protection	SHARP	12
		NADRA	25
		CAR (KP)	43 RVs
	Livelihood	PPAF	1
		NAVTTTC	7
	Education	REPID	12
INSPIRE		1	
Health	FPHC	6	
	PDH/CAR	6	
	NHSRC/DOH	25	
Punjab	Protection	SHARP	4
		REPID	1
		NADRA	36
	Livelihood	MoRR	4
		CAR (Punjab)	1
	Education	NAVTTTC	3
		CAR (Punjab)	1
Health	INSPIRE	1	
	CAR (Punjab)	1	
WASH	NHSRC/DOH	36	
WASH	CAR (Punjab)	1	
Sindh	Protection	SHARP	1
		NADRA	29
		MoRR	1
	Livelihood	ARRC	1
NAVTTTC		1	
Education	INSPIRE	1	

Refugee Coordination countrywide: United Nations High Commissioner for Refugees (UNHCR)

The boundaries and names shown and the designations used on this map do not imply official endorsement or acceptance by the United Nations