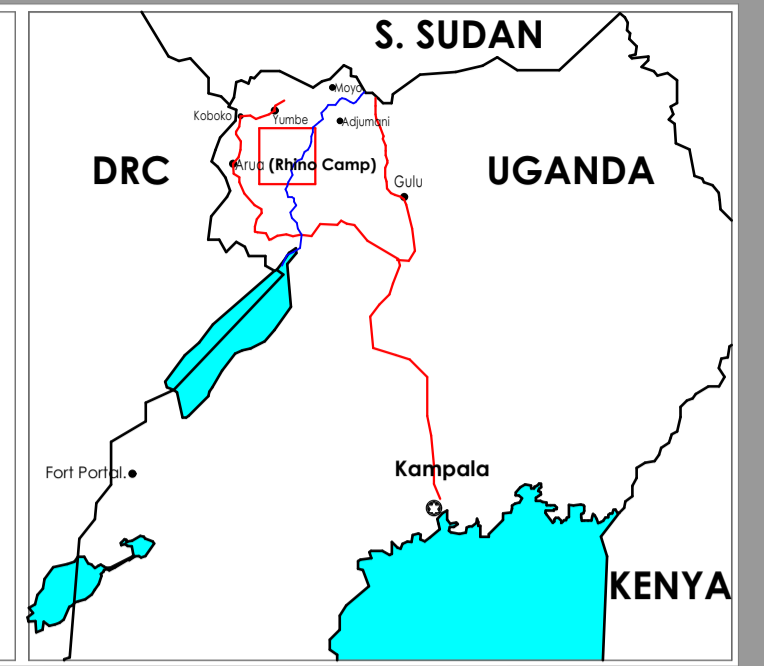


RHINO CAMP REFUGEE SETTLEMENT IN ARUA DISTRICT MASTERPLAN

DRAFT XI As of 25th of April 2018



The boundaries and names shown and the designation used on this map do not imply official endorsement or acceptance by United Nations



Map for Internal use by UNHCR and its Partners

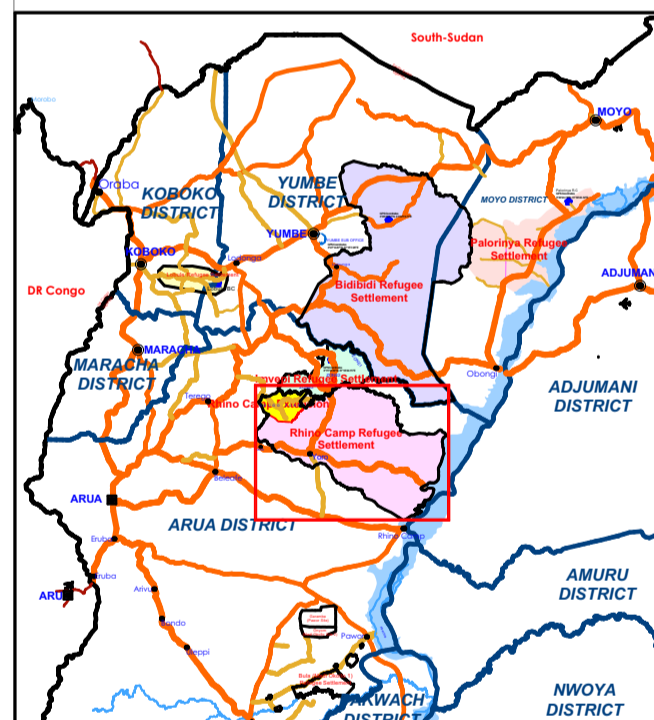
Total Gross area of Rhino Camp Refugee Settlement = 85.525 Km²

Total available receiving capacity in Rhino Camp Refugee Settlement Absorption Area - 5.503 Km²

88% of 5.503 = 4.843 Km² for Agriculture and Residential.
12% of 5.503 = 0.660 Km² for Roads and Facilities.

Residential = 4.843/0.0025 = 1,937 Families
= 1,937 Families x 5 Persons/Family
= **9,685 People**

AVAILABLE ABSORPTION CAPACITY (Km ²)	POPULATION AS OF 30 JANUARY 2018
OCEA ZONE 1	0.000
SIRIPI ZONE 2	0.000
EDEN ZONE 3	0.000
TIKA ZONE 4	0.000
ODOBU ZONE 5	0.000
OFUA ZONE 6	0.000
OMUGO ZONE 07	0.000
OFUA ZONE 186	2.007
GBULUKU ATUNI	3.496
TOTAL	5.503



Map Legend Existing Infrastructure

- WATER, SANITATION & HYGIENE**
- Motorized Borehole
 - Hand pumps
 - System tanks
 - Trucking Tanks
- GENERAL INFRASTRUCTURE**
- Proposed Settlement boundary
 - Existing access roads
 - Roads under DANIDA
 - Zonal Boundaries
 - Rivers
 - Swamp
 - Existing Culvert / Bridge
 - Ocea Zone (1)
 - Siripi Zone (2)
 - Eden Zone (3)
 - Tika Zone (4)
 - Odobu Zone (5)
 - Ofua Zone (6)
 - Omugo Zone (7)
 - New sites
 - Primary School
 - Early Childhood Development
 - Health Centre
 - Child Friendly Space
 - Market
 - Help Desk
 - Trading Centre
 - Nationals
 - Police station
 - Recreational Facility
 - Rhino Camp Reception Centre
 - Permanent Food Distribution Point
 - Satellite Food Distribution Point
 - Proposed Permanent Food Distribution Point
 - Proposed Satellite Food Distribution Point
 - Solar Security Light for - UNHCR
 - Solar Security Light for - CARE
 - Solar Security Light for - DRC

