

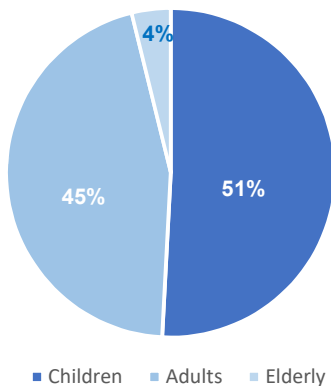
Iraq: Snapshot on IDPs in formal camps

2019 Summary

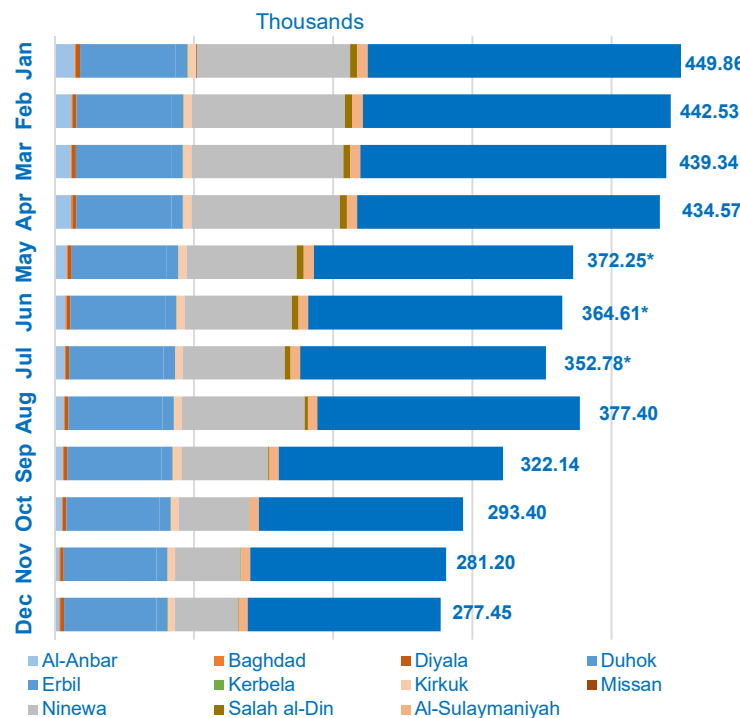


Total HHs	56,035
Total Individuals	277,451
Total Female	144,203
Total Male	133,248
Total Children	141,092
Total Adults	125,706
Total Elderly	10,653

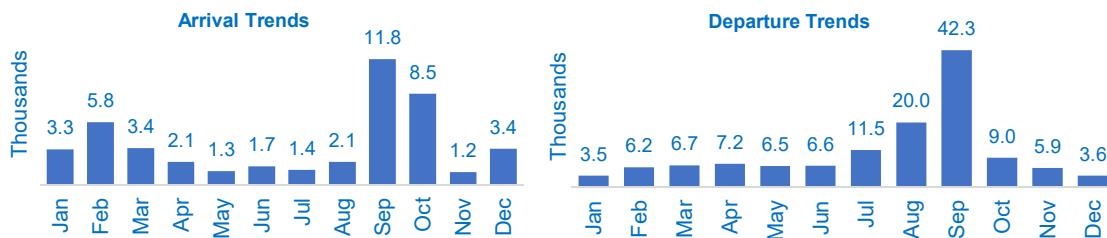
Distribution of IDPs by demography



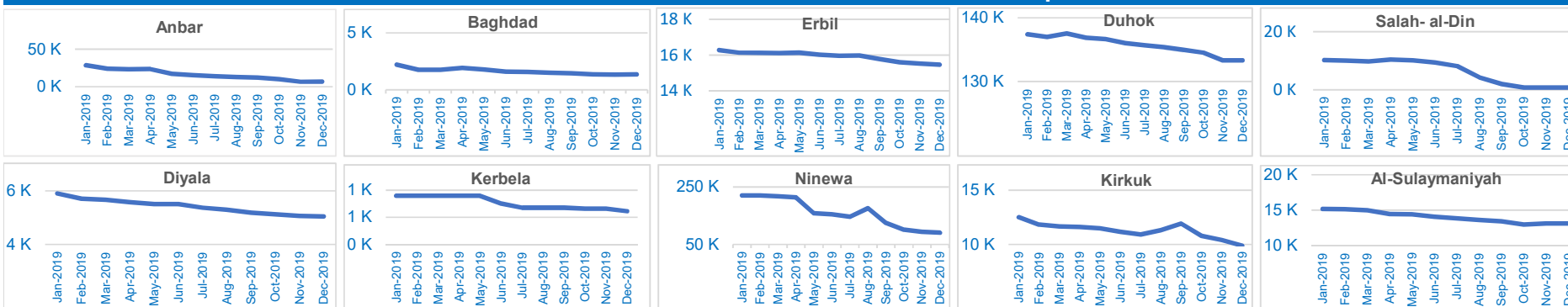
2019 - IDP Formal Camps Population Evolution



Monthly evolution of IDPs in camps



Governorate Evolution of IDPs in Formal Camps



* May, June and July data excludes Jad'ah camp figures due to ongoing camp sweep



Camp Population Overview - 2019

A total of 54 camps closed or were consolidated during 2019, remaining 67 camps open by January 2020, of which only 39 with a population over 100 households.

The total camp population (no. of individuals) decreased by 172,407 (38.32%) between January and December 2019, from those a total of 123,429 individuals or 72% of this decrease is directly attributed to camp closures or consolidation.

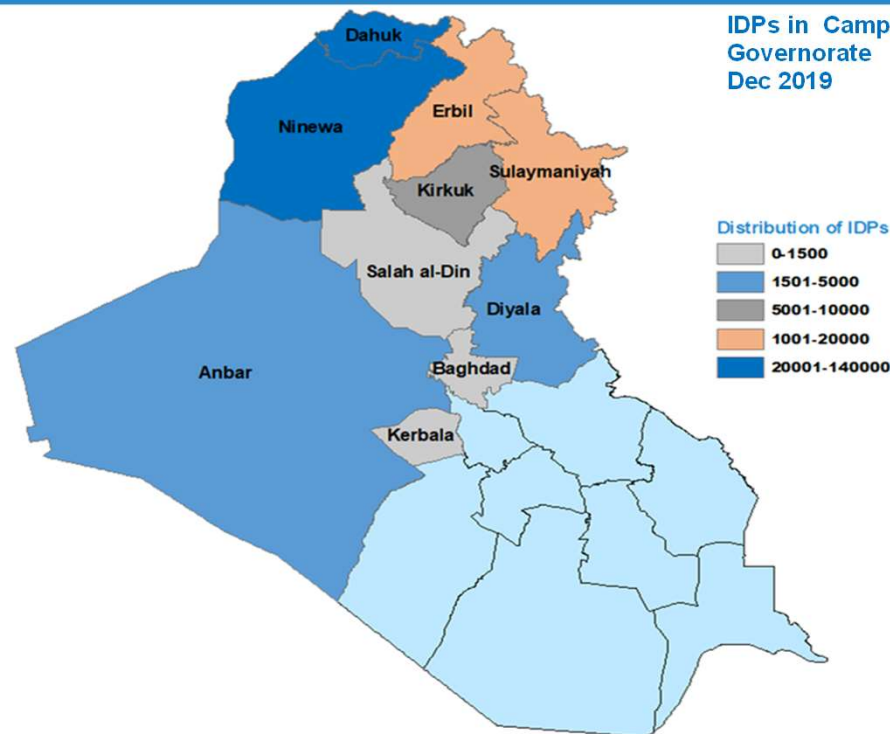
Ninewa governorate accumulated the 90% of IDP departures, reducing the total population at governorate level by 46%.

The most significant camp consolidations in 2019 were in Anbar governorate (AAF and HCT camps) with a total of 26 sub-camps. Particularly, AAF reduced population by 73% (1,147 individuals); followed by Jad'ah 1 & 2 (Ninewa) by 67% (6,042 individuals), in terms of total no. of individuals the departures were more significant in Hamam Al-Ailil (Ninewa) with 11,693 individuals departing.

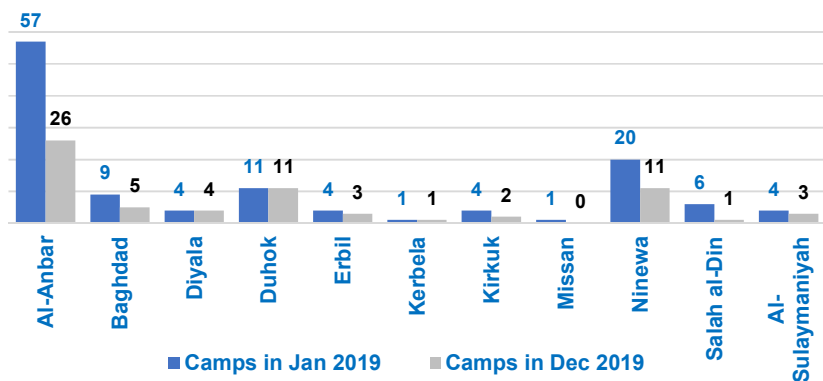
In terms of total individuals, the female camp population decreased more than the male population (92,229 female individuals and 80,189 male individuals), when looking at percentage decrease however, the difference is much smaller, with 37% decrease of the male camp population since January 2019 and a 39% decrease in the female camp population.

The most stable governorates were Erbil, Dohuk and Baghdad.

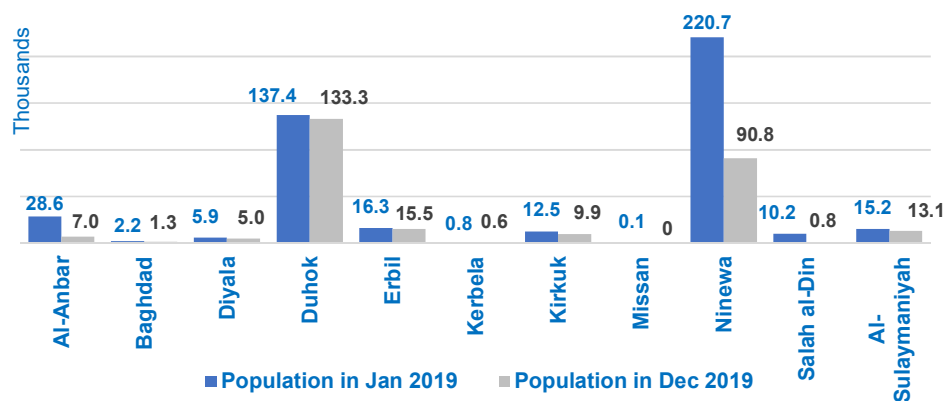
The total camp population only increased in 6 camps: Laylan IDP (1,614 or 26%), Hasansham U2 (367 or 9%), Baharka (9 or 0.2%) Al-Nabi Younis(6 or 2%) and Latifiya 2 (6 or 9%).



Camps per Governorate



Governorate Evolution of IDPs in Formal Camps



Latest Camp List and the Population as at Dec 2019

Camp Information				Population Overview				Demographics			
Snr.	Governorate	District	Camp name	Total no of families	Total no of individuals	Total no of Females	Total no of Males	Total children (0-17 yrs)	Total adults (18-59 yrs)	Total elderly (60 yrs and above)	
1	Al-Anbar	Al-Falluja	Al-Nasir Camp (AAF01)	28	123	63	60	69	46	8	
2	Al-Anbar	Al-Falluja	Al-Salam Camp (AAF02)	78	309	186	123	172	114	23	
3	Al-Anbar	Al-Falluja	Al-Ikhowa (AAF03)	5	19	11	8	10	9	0	
4	Al-Anbar	Al-Falluja	Al-Hijaj camp (AAF04)	20	105	57	48	58	46	1	
5	Al-Anbar	Al-Falluja	Al-Amal Al-manshood 1 MoDM camp (AAF05)	63	268	136	132	122	134	12	
6	Al-Anbar	Al-Falluja	Amriyat Al-Fallujah semi-perminant / UNHCR Halls (Al Qa'at) (AAF07)	40	171	101	70	94	68	9	
7	Al-Anbar	Al-Falluja	Al-Sa'ada camp (AAF08)	23	118	60	58	72	43	3	
8	Al-Anbar	Al-Falluja	Caravan 1 camp (AAF11)	167	780	396	384	352	389	39	
9	Al-Anbar	Al-Falluja	Amal Manshood 2 (AAF12)	30	143	82	61	73	63	7	
10	Al-Anbar	Al-Falluja	Iraq Camp (AAF14)	67	273	156	117	126	133	14	
11	Al-Anbar	Al-Falluja	Kiram Al Fallujah Camp (AAF16)	16	67	36	31	33	32	2	
12	Al-Anbar	Al-Falluja	Al Fallujah 1 (AAF17)	33	146	85	61	65	74	7	
13	Al-Anbar	Al-Falluja	Al-Tahrir (Al Khanjar) (AAF18)	9	36	22	14	14	18	4	
14	Al-Anbar	Al-Falluja	Al-Mateen (AAF19)	30	142	81	61	78	59	5	
15	Al-Anbar	Al-Falluja	Fallujah 9 (AAF20)	10	54	29	25	31	20	3	
16	Al-Anbar	Al-Falluja	Zoba'a camp (AAF22)	45	231	113	118	115	101	15	
17	Al-Anbar	Al-Falluja	Al-Simood / Ssumud (AAF24)	67	363	191	172	161	184	18	
18	Al-Anbar	Al-Falluja	Al Anbar (AAF27)	22	102	57	45	50	48	4	
19	Al-Anbar	Al-Falluja	Alta'aki (AAF30)	24	69	47	22	18	40	11	
20	Al-Anbar	Al-Falluja	Al Rayan (AAF31)	44	174	114	60	92	78	4	
21	Al-Anbar	Al-Falluja	Al Shahuda al Ashwaii (AAF32)	61	399	218	181	105	276	18	
	Anbar	Falluja	Total AAF	882	4092	2241	1851	1910	1975	207	
22	Al-Anbar	Al-Falluja	Al Tahrer 1	73	314	167	147	176	122	16	
23	Al-Anbar	Al-Falluja	Al Tahrer 2	102	475	245	230	268	197	10	
24	Al-Anbar	Al-Falluja	Al Tahrer Central	141	629	341	288	366	240	23	
25	Al-Anbar	Al-Falluja	Al-Qasir 4 - RHU Camp B	128	656	353	303	365	253	38	
26	Al-Anbar	Al-Falluja	Al-Qasir RHU Camp A	145	790	385	405	472	288	30	
	Anbar	Ramadi	Total HTC	589	2864	1491	1373	1647	1100	117	
27	Baghdad	Al-Mada'in	Al-Nabi Younis	63	314	168	146	168	140	6	
28	Baghdad	Al-Kadhmiyah	Al-Ahel	94	460	246	214	264	186	10	
29	Baghdad	Al-Risafa	Zayona	105	348	181	167	125	195	28	
30	Baghdad	Al-Mahmoudiya	Latifiya 1	34	145	70	75	89	53	3	
31	Baghdad	Al-Mahmoudiya	Latifiya 2	15	76	44	32	49	27	0	
32	Duhok	Zakho	Berseve 1	1393	7289	3752	3537	3410	3588	291	
33	Duhok	Zakho	Berseve 2	1734	8703	4469	4234	4319	4047	337	
34	Duhok	Zakho	Chamishku	5040	26469	13608	12861	11506	13686	1277	
35	Duhok	Zakho	Darkar	733	3940	1985	1955	1838	1924	178	
36	Duhok	Al-Amadiya	Dawadia	626	3203	1684	1519	1514	1534	155	
37	Ninewa	Aqra	Mamilian	198	1000	520	480	523	432	45	
38	Duhok	Sumail	Kabarto 2	2656	13681	7051	6630	6534	6531	616	

Camp Information				Population Overview				Demographics		
Snr.	Governorate	District	Camp name	Total no of families	Total no of individuals	Total no of Females	Total no of Males	Total children (0-17 yrs)	Total adults (18-59 yrs)	Total elderly (60 yrs and above)
39	Duhok	Sumail	Khanke	2816	15239	7621	7618	7076	7484	679
40	Duhok	Sumail	Bajet Kandala*	2050	10588	5444	5144	4938	5146	504
41	Duhok	Sumail	Rwanga Community	2610	14074	7425	6649	5725	7706	643
42	Duhok	Sumail	Shariya	3111	16656	8570	8086	7801	8172	683
43	Duhok	Sumail	Kabarto 1	2583	13470	6886	6584	6562	6366	542
44	Diyala	Khanaqin	Al-Wand 1	601	2651	1280	1371	1328	1262	61
45	Diyala	Khanaqin	Al-Wand 2	199	864	412	452	434	392	38
46	Diyala	Khanaqin	Qoratu	200	919	453	466	510	382	27
47	Diyala	Baquba	Muskar Saad Camp	118	612	347	265	326	265	21
48	Erbil	Erbil	Baharka	929	4736	2394	2342	2691	1912	133
49	Erbil	Erbil	Harshm	290	1478	754	724	807	640	31
50	Erbil	Makhmour	Debaga 1	1947	9255	4758	4497	4996	3955	304
51	Kerbela	Al-Hinidya	Al-Kawthar Camp	104	645	328	317	340	287	18
52	Kirkuk	Kirkuk	Yahyawa	385	2039	1052	987	1124	845	70
53	Kirkuk	Kirkuk	Laylan IDP	1394	7843	4261	3582	4936	2681	226
54	Ninewa	Al-Shikhan	Essian	2766	14816	7542	7274	6785	7408	623
55	Ninewa	Al-Shikhan	Mamrashan	1722	8762	4560	4202	3989	4376	397
56	Ninewa	Al-Shikhan	Sheikhan	859	4392	2201	2191	1997	2193	202
57	Ninewa	Al-Hamdaniya	Hasansham U2	981	4534	2553	1981	2960	1474	100
58	Ninewa	Al-Hamdaniya	Hasansham U3	1258	5720	3163	2557	3464	2114	142
59	Ninewa	Al-Hamdaniya	Khazer M1	1206	6314	3324	2990	3795	2338	181
60	Ninewa	Al-Hamdaniya	As Salamyiah 2	3087	15097	8055	7042	8870	5768	459
61	Ninewa	Al-Mosul	Qayyarah-Jad'ah 1	1224	2998	1684	1314	1261	1586	151
62	Ninewa	Al-Mosul	Qayyarah-Jad'ah 5	4320	17024	8691	8333	10306	6207	511
63	Ninewa	Al-Mosul	Hamam Al Alil 2	2191	10186	5677	4509	6186	3738	262
64	Salah Al-Din	Tikrit	Al Karamah	202	841	502	339	527	281	33
65	Sulaymaniyah	Kalar	Tazade	263	1239	658	581	679	520	40
66	Sulaymaniyah	Al-Sulaymaniya	Arbat IDP	348	1615	830	785	920	654	41
67	Sulaymaniyah	Al-Sulaymaniya	Ashti IDP	2109	10260	5268	4992	5863	4136	261
Grand Total				56,035	277,451	144,203	133,248	141,092	125,706	10,653