

KEY FIGURES

302,137
Total refugee population

98%

Living in camps and settlements
296,694

82%

Are Women and Children

66,904
Households

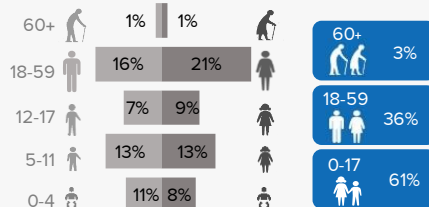
2%

Living in urban areas
5,443

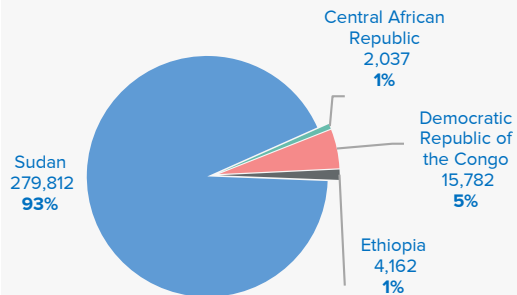
53%

Are female

Age and gender breakdowns

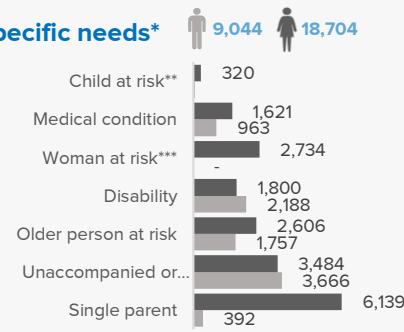


Main countries of origin*



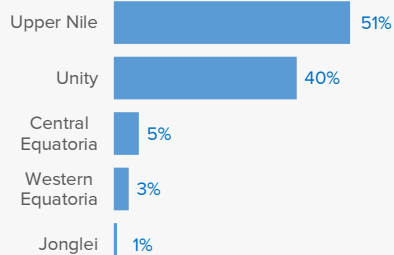
* Excludes 344 refugees from other countries

Main Specific needs*

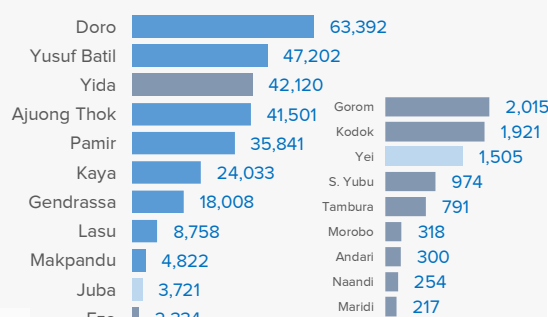


*Individual can have more than one specific need
**Excludes children at risk of not attending school
***Excludes lactating mothers

States hosting refugees



Refugee locations



Key: Urban (light blue), Camp (dark blue), Settlement (grey)

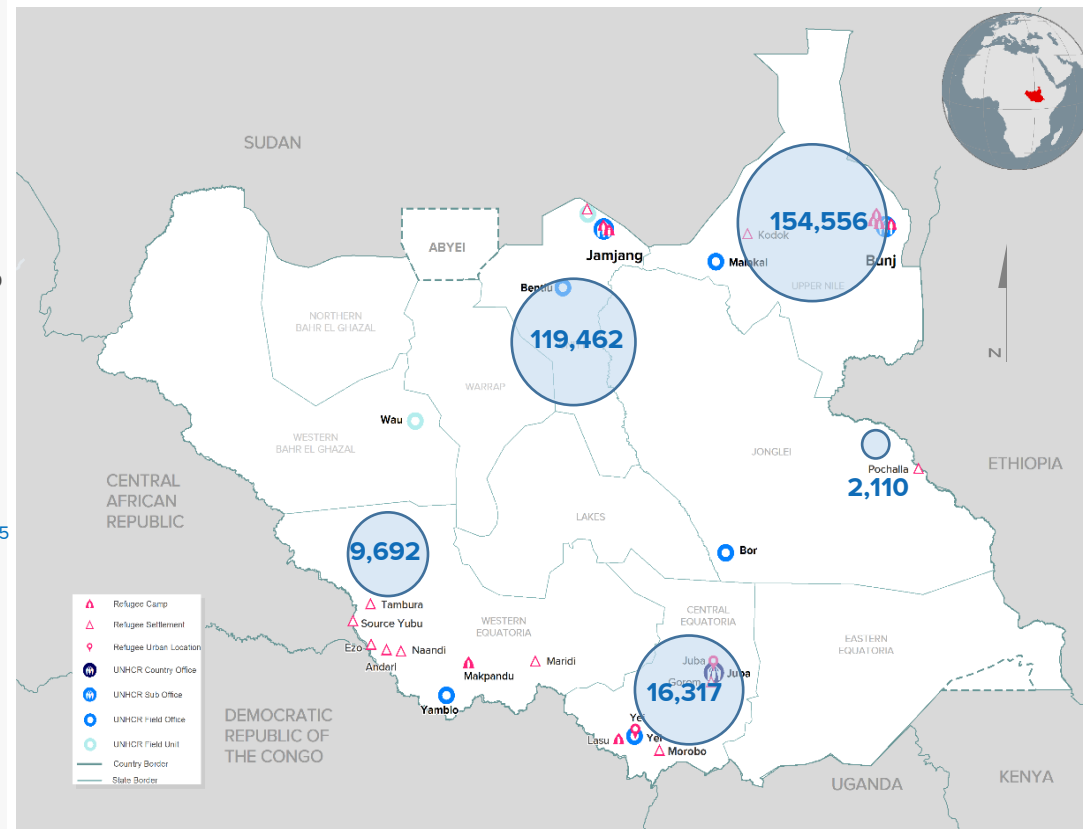
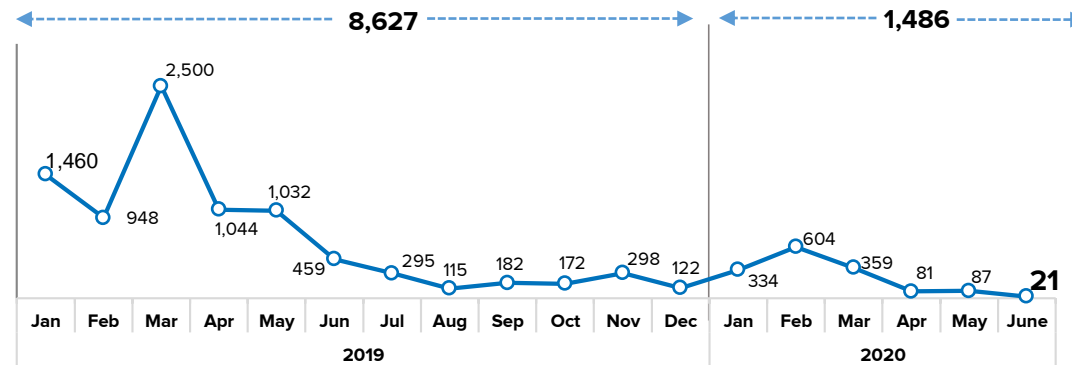
Our Partners

CRA, AAHI, ACROSS, ACTED, AHA, CARE, DRC, HDC, IMC, IRC, LWF, RI, SCI, SP, UMCOR, JRS and WVI.

Note: South Sudan hosts 3,787 asylum seekers (Juba -3,774; Makpandu-8; Maban-1; Pamir -4).

New arrivals trends

Jan 2019 – June 2020



South Sudan Refugee statistics: Population by Location, Sex and Age Group

as of the 30-June-2020



State	Location	0 - 4 years			5 - 11 years			12 - 17 years			18 - 59 years			60 years +			Total			Households		
		F	M	Total	F	M	Total	F	M	Total	F	M	Total	F	M	Total	F	M	Total	F	M	Total
Upper Nile	Doro	5,933	6,175	12,108	7,945	8,456	16,401	5,266	5,433	10,699	12,892	10,016	22,908	700	576	1,276	32,736	30,656	63,392	7,743	6,033	13,776
	Kaya	1,879	2,063	3,942	2,836	2,988	5,824	2,038	2,009	4,047	5,292	3,787	9,079	491	650	1,141	12,536	11,497	24,033	2,762	2,474	5,236
	Yusuf Batil	3,833	4,019	7,852	5,676	5,919	11,595	3,993	4,011	8,004	9,827	7,850	17,677	947	1,127	2,074	24,276	22,926	47,202	4,787	4,604	9,391
	Gendrassa	1,297	1,319	2,616	2,169	2,336	4,505	1,629	1,537	3,166	3,967	2,993	6,960	346	415	761	9,408	8,600	18,008	2,151	1,823	3,974
	Kodok	0	0	0	274	286	560	226	182	408	475	401	876	40	37	77	1,015	906	1,921	327	213	540
	Total	12,942	13,576	26,518	18,900	19,985	38,885	13,152	13,172	26,324	32,453	25,047	57,500	2,524	2,805	5,329	79,971	74,585	154,556	17,770	15,147	32,917
Unity State	Ajounj Thok	3,521	3,538	7,059	5,188	5,299	10,487	4,010	4,296	8,306	8,213	6,822	15,035	370	244	614	21,302	20,199	41,501	5,000	3,009	8,009
	Pamir	3,603	3,637	7,240	4,800	4,920	9,720	3,368	3,118	6,486	7,272	4,599	11,871	325	199	524	19,368	16,473	35,841	5,552	2,108	7,660
	Yida	3,219	3,313	6,532	6,294	6,466	12,760	4,467	4,096	8,563	9,794	3,781	13,575	429	261	690	24,203	17,917	42,120	6,407	1,842	8,249
	Total	10,343	10,488	20,831	16,282	16,685	32,967	11,845	11,510	23,355	25,279	15,202	40,481	1,124	704	1,828	64,873	54,589	119,462	16,959	6,959	23,918
Central Equatoria	Gorom	172	178	350	210	234	444	165	183	348	439	396	835	27	11	38	1,013	1,002	2,015	324	310	634
	Juba	113	97	210	211	190	401	135	130	265	451	2,272	2,723	7	115	122	917	2,804	3,721	243	2,291	2,534
	Lasu	184	198	382	1,225	1,221	2,446	810	798	1,608	2,114	1,819	3,933	249	140	389	4,582	4,176	8,758	1,259	1,201	2,460
	Morobo	6	8	14	53	48	101	26	43	69	71	52	123	4	7	11	160	158	318	38	41	79
	Yei	87	102	189	171	206	377	135	142	277	270	358	628	15	19	34	678	827	1,505	223	305	528
	Total	562	583	1,145	1,870	1,899	3,769	1,271	1,296	2,567	3,345	4,897	8,242	302	292	594	7,350	8,967	16,317	2,087	4,148	6,235
Jonglei State	Pochalla	213	215	428	205	246	451	190	234	424	574	168	742	52	13	65	1,234	876	2,110	435	87	522
	Total	213	215	428	205	246	451	190	234	424	574	168	742	52	13	65	1,234	876	2,110	435	87	522
Western Equatoria	Andari	3	3	6	47	45	92	18	25	43	86	52	138	8	13	21	162	138	300	60	61	121
	Ezo	4	8	12	253	275	528	151	153	304	791	503	1,294	105	91	196	1,304	1,030	2,334	557	424	981
	Makpandu	419	472	891	564	531	1,095	350	319	669	1,072	979	2,051	46	70	116	2,451	2,371	4,822	661	820	1,481
	Maridi	6	4	10	26	25	51	23	24	47	45	62	107	0	2	2	100	117	217	31	52	83
	Naandi	2	2	4	38	34	72	24	29	53	55	52	107	8	10	18	127	127	254	39	45	84
	Source yubu	4	3	7	137	168	305	91	89	180	287	162	449	16	17	33	535	439	974	196	124	320
	Tambura	4	9	13	141	149	290	85	73	158	200	118	318	8	4	12	438	353	791	147	95	242
	Total	442	501	943	1,206	1,227	2,433	742	712	1,454	2,536	1,928	4,464	191	207	398	5,117	4,575	9,692	1,691	1,621	3,312
Grand total		24,502	25,363	49,865	38,463	40,042	78,505	27,200	26,924	54,124	64,187	47,242	111,429	4,193	4,021	8,214	158,545	143,592	302,137	38,942	27,962	66,904

South Sudan Statistics: Population by Country of Origin, Sex and Age Group

as of the 30-June-2020



Country of Origin	Settlement	Households (HHs)			Persons																	
		Total HHs	Female headed		0 - 4 years			5 - 11 years			12 - 17 years			18 - 59 years			60 years +			Total		
			HHs	%	F	M	T	F	M	T	F	M	T	F	M	T	F	M	T	F	M	T
CENTRAL AFRICAN REPUBLIC	Andari	1	-	0%	0	0	0	0	0	0	0	0	0	1	1	0	0	0	0	1	1	
	Ezo	13	8	62%	0	0	0	3	6	9	2	4	6	13	4	17	1	2	3	19	16	35
	Makpandu	112	23	21%	21	28	49	19	25	44	16	14	30	49	93	142	0	6	6	105	166	271
	Naandi	7	4	57%	0	1	1	1	6	7	1	0	1	5	3	8	0	0	0	7	10	17
	SourceYubu	308	188	61%	3	3	6	133	168	301	88	87	175	278	158	436	15	15	30	517	431	948
	Tambura	228	139	61%	3	9	12	136	144	280	84	71	155	191	112	303	6	4	10	420	340	760
	Juba	1	-	0%	0	0	0	0	0	0	2	1	3	1	1	2	0	0	0	3	2	5
Total	670	362	54%	27	41	68	292	349	641	193	177	370	537	372	909	22	27	49	1,071	966	2,037	
DEMOCRATIC REPUBLIC OF THE CONGO	Gorom	1	-	0%	1	-	1	-	1	1	-	1	1	-	-	-	-	1	1	1	3	4
	Andari	120	60	50%	3	3	6	47	45	92	18	25	43	86	51	137	8	13	21	162	137	299
	Ezo	968	549	57%	4	8	12	250	269	519	149	149	298	778	499	1,277	104	89	193	1,285	1,014	2,299
	Juba	18	5	28%	-	1	1	5	2	7	3	3	6	6	10	16	2	3	5	16	19	35
	Lasu	2,213	1,199	54%	165	192	357	1,128	1,117	2,245	741	706	1,447	2,004	1,592	3,596	248	136	384	4,286	3,743	8,029
	Makpandu	1,187	594	50%	356	380	736	449	419	868	274	258	532	894	694	1,588	45	55	100	2,018	1,806	3,824
	Morobo	79	38	48%	6	8	14	53	48	101	26	43	69	71	52	123	4	7	11	160	158	318
	Naandi	77	35	45%	2	1	3	37	28	65	23	29	52	50	49	99	8	10	18	120	117	237
	SourceYubu	12	8	67%	1	-	1	4	-	4	3	2	5	9	4	13	1	2	3	18	8	26
	Tambura	14	8	57%	1	-	1	5	5	10	1	2	3	9	6	15	2	-	2	18	13	31
Yei	251	169	67%	47	56	103	75	88	163	50	61	111	177	101	278	15	10	25	364	316	680	
Total	4,940	2,665	54%	586	649	1,235	2,053	2,022	4,075	1,288	1,279	2,567	4,084	3,058	7,142	437	326	763	8,448	7,334	15,782	
ETHIOPIA	Doro	1	-	1	2	-	2	2	-	2	-	-	-	3	1	4	-	-	-	7	1	8
	Gorom	628	324	52%	170	176	346	207	231	438	163	182	345	438	391	829	27	10	37	1,005	990	1,995
	Juba	15	3	0%	1	-	1	1	2	3	-	-	-	9	13	22	-	-	-	11	15	26
	Makpandu*	7	2	0%	1	-	1	1	1	2	1	-	1	2	5	7	-	-	-	5	6	11
	Pochalla	522	435	83%	213	215	428	205	246	451	190	234	424	574	168	742	52	13	65	1,234	876	2,110
	Kodok	2	1	50%	-	-	-	1	1	2	2	-	2	2	-	2	-	-	-	5	1	6
	Ajuong Thok	1	1	100%	-	1	1	-	1	1	-	-	-	2	2	4	-	-	-	2	4	6
Total	1,176	766	4	387	392	779	417	482	899	356	416	772	1,030	580	1,610	79	23	102	2,269	1,893	4,162	
SUDAN	Ajuong Thok	8,008	4,999	62%	3,521	3,537	7,058	5,188	5,298	10,486	4,010	4,296	8,306	8,211	6,820	15,031	370	244	614	21,300	20,195	41,495
	Yusif Batil	9,391	4,787	51%	3,833	4,019	7,852	5,676	5,919	11,595	3,993	4,011	8,004	9,827	7,850	17,677	947	1,127	2,074	24,276	22,926	47,202
	Doro	13,775	7,743	56%	5,931	6,175	12,106	7,943	8,456	16,399	5,266	5,433	10,699	12,888	10,015	22,903	700	576	1,276	32,728	30,655	63,383
	Gendrassa	3,974	2,151	54%	1,297	1,319	2,616	2,169	2,336	4,505	1,629	1,537	3,166	3,967	2,993	6,960	346	415	761	9,408	8,600	18,008
	Gorom	4	-	4	1	2	3	3	2	5	2	-	2	1	4	5	-	-	-	7	8	15
	Juba	2,290	216	9%	102	90	192	199	184	383	130	124	254	398	2,063	2,461	5	104	109	834	2,565	3,399
	Kaya	5,236	2,762	53%	1,879	2,063	3,942	2,836	2,988	5,824	2,038	2,009	4,047	5,292	3,787	9,079	491	650	1,141	12,536	11,497	24,033
	Kodok	538	326	61%	-	-	-	273	285	558	224	182	406	473	401	874	40	37	77	1,010	905	1,915
	Lasu	247	60	24%	19	6	25	97	104	201	69	92	161	110	227	337	1	4	5	296	433	729
	Makpandu	123	35	28%	38	58	96	88	82	170	59	46	105	112	141	253	-	7	7	297	334	631
	Maridi	83	31	37%	6	4	10	26	25	51	23	24	47	45	62	107	-	2	2	100	117	217
	Pamir	7,660	5,552	72%	3,603	3,637	7,240	4,800	4,920	9,720	3,368	3,118	6,486	7,272	4,599	11,871	325	199	524	19,368	16,473	35,841
	Yei	277	54	19%	40	46	86	96	118	214	85	81	166	92	257	349	-	9	9	313	511	824
Yida	8,249	6,407	78%	3,219	3,313	6,532	6,294	6,466	12,760	4,467	4,096	8,563	9,794	3,781	13,575	429	261	690	24,203	17,917	42,120	
Total	59,855	35,123	59%	23,489	24,269	47,758	35,688	37,183	72,871	25,363	25,049	50,412	58,482	43,000	101,482	3,654	3,635	7,289	146,676	133,136	279,812	
Others*	Others*	263	26	10%	14	15	29	12	3	15	-	4	4	54	231	285	1	10	11	81	263	344
	Total	263	26	10%	14	15	29	12	3	15	-	4	4	54	231	285	1	10	11	81	263	344
Grand Total	66,904	38,942	58%	24,503	25,366	49,869	38,462	40,039	78,501	27,200	26,925	54,125	64,187	47,241	111,428	4,193	4,021	8,214	158,545	143,592	302,137	

* Refers to refugees from Uganda, Somalia, Eritrea, Syria, Burundi and Egypt spread in Gorom, Lasu, Juba, Makpandu and Doro.

Asylum Seekers Population by Country of Origin, Sex and Age Group in South Sudan

as of the 30-June-2020



Country of Origin	Location	Principal Applicants			Persons																	
		Total Cases	Female headed		0 - 4 years			5 - 11 years			12 - 17 years			18 - 59 years			60 years +			Total		
			Cases	%	F	M	T	F	M	T	F	M	T	F	M	T	F	M	T	F	M	T
BURUNDI	Juba	742	21	3%	18	13	31	10	9	19	3	4	7	74	723	797	0	0	0	105	749	854
	Total	742	21	3%	18	13	31	10	9	19	3	4	7	74	723	797	-	-	-	105	749	854
CHAD	Juba	1	-	0%	-	-	-	-	-	-	-	-	-	-	1	1	-	-	-	-	1	1
	Total	1	-	3%	-	-	-	-	-	-	-	-	-	-	1	1	-	-	-	-	1	1
CAMEROON	Juba	2	-	0%	-	-	-	-	-	-	-	-	-	2	2	2	-	-	-	-	2	2
	Makpandu	2	-	0%	-	-	-	-	-	-	-	-	-	2	2	2	-	-	-	-	2	2
	Total	4	-	0%	-	-	-	-	-	-	-	-	-	4	4	4	-	-	-	-	4	4
ERITREA	Juba	1,939	376	18%	99	150	249	45	45	90	1	8	9	539	1,544	2,083	6	57	63	690	1,804	2,494
	Makpandu	3	-	0%	-	-	-	-	-	-	-	-	-	3	3	3	-	-	-	-	3	3
	Total	1,942	376	19%	99	150	249	45	45	90	1	8	9	539	1,547	2,086	6	57	63	690	1,807	2,497
ETHIOPIA	Doro	1	-	0%	-	-	-	-	-	-	-	-	-	1	1	1	-	-	-	-	1	1
	Juba	272	61	18%	8	19	27	11	6	17	1	-	1	114	210	324	-	2	2	134	237	371
	Makpandu	2	-	0%	-	-	-	-	-	-	-	-	-	2	2	2	-	-	-	-	2	2
	Total	275	61	22%	8	19	27	11	6	17	1	-	1	114	213	327	-	2	2	134	240	374
SOMALIA	Juba	30	1	3%	-	-	-	-	-	-	-	-	-	1	29	30	-	-	-	1	29	30
	Total	30	1	3%	-	-	-	-	-	-	-	-	-	1	29	30	-	-	-	1	29	30
SUDAN	Juba	7	-	0%	-	1	1	-	-	-	-	-	-	2	5	7	-	2	2	2	8	10
	Pamir	-	-	0%	-	-	-	-	-	-	-	-	-	4	4	4	-	-	-	-	4	4
	Total	7	-	0%	-	1	1	-	-	-	-	-	-	2	9	11	-	2	2	2	12	14
SYRIA	Juba	1	-	0%	-	-	-	-	-	-	-	-	-	1	1	1	-	-	-	-	1	1
	Makpandu	1	-	0%	-	-	-	-	-	-	-	-	-	1	1	1	-	-	-	1	-	1
	Total	2	-	0%	-	-	-	-	-	-	-	-	-	2	2	2	-	-	-	1	1	2
Egypt	Juba	1	-	0%	-	-	-	-	-	-	-	-	-	1	1	1	-	-	-	-	1	1
	Juba	1	-	0%	-	-	-	-	-	-	-	-	-	1	1	1	-	-	-	-	1	1
UGANDA	Juba	1	-	0%	-	-	-	-	-	-	-	-	-	1	1	1	-	-	-	-	1	1
	Juba	4	-	0%	2	-	2	-	-	-	-	-	-	1	4	5	-	-	-	3	4	7
DRC	Juba	2	-	0%	-	-	-	-	-	-	-	-	-	2	2	2	-	-	-	-	2	2
	Juba	2	-	0%	-	-	-	-	-	-	-	-	-	2	2	2	-	-	-	-	2	2
Yemen	Juba	2	-	0%	-	-	-	-	-	-	-	-	-	2	2	2	-	-	-	-	2	2
	Total	8	-	0%	2	-	2	-	-	-	-	-	-	1	8	9	-	-	-	3	8	11
Grand Total		3,011	459	1	127	183	310	66	60	126	5	12	17	731	2,536	3,267	6	61	67	936	2,851	3,787