

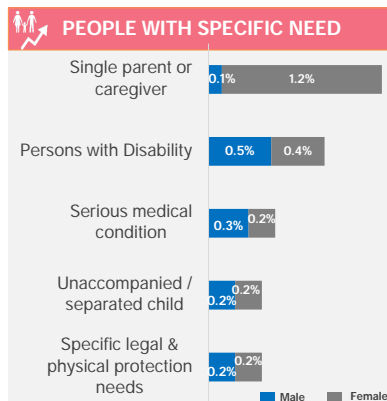
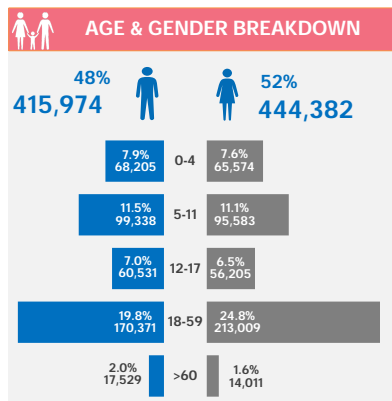
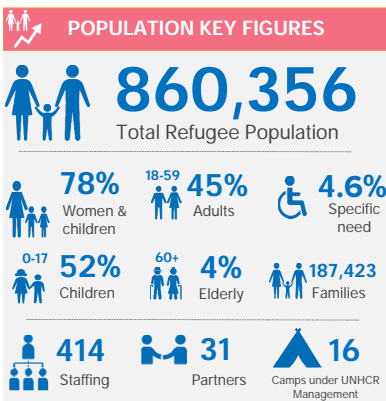
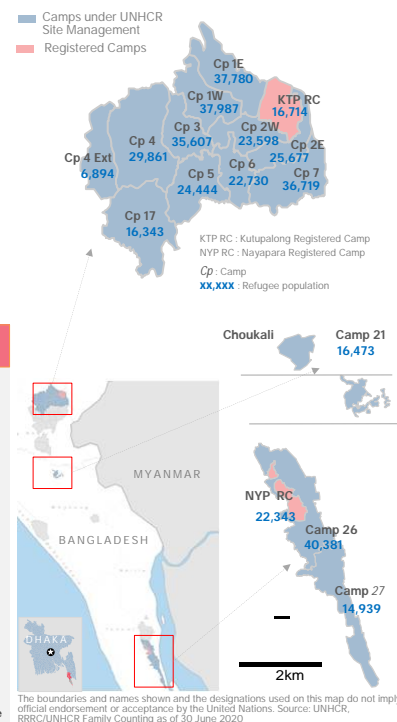
SITUATION OVERVIEW

More than 860,300 Rohingya refugee women, men, girls and boys are hosted in Cox's Bazar District, including 35,060 registered refugees who arrived in the 1990s (4%), and other unregistered Rohingya refugees who had settled in host communities prior to August 2017. Children make up 52% of the total refugee population and women and girls make up 51%.

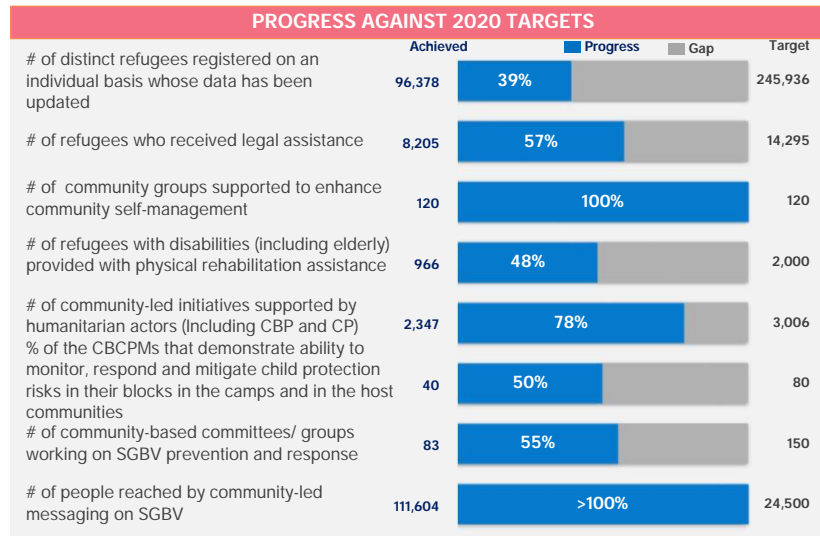
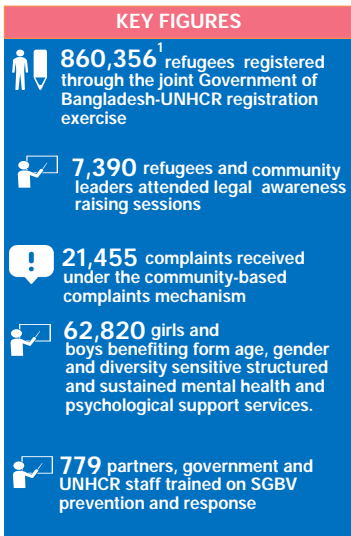
The humanitarian crisis of Rohingya refugees has intensified due to the spread of COVID-19 in the country and the world. UNHCR continues preparedness and response efforts focusing on Health, WASH and risk communication and community engagement despite the lock-down and measures taken to reduce the humanitarian footprint in the camps since end of March consistent with the Government's public health policies.

This dashboard monitors the monthly achievements of selected indicators from the 2020 country operations plan for each strategic area of activity with cumulative key figures and monthly highlights.

GEOGRAPHIC SITUATION



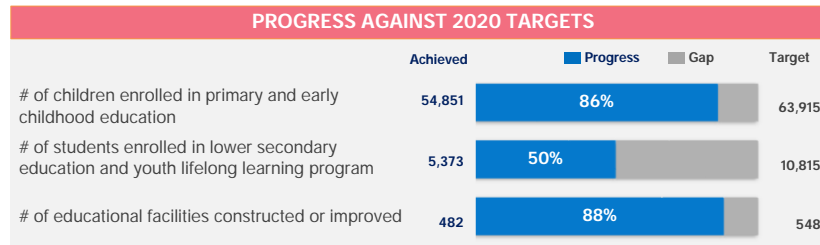
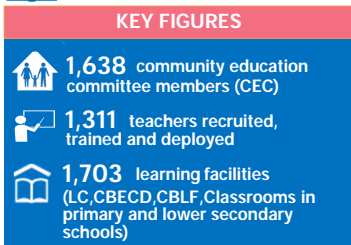
PROTECTION



ACHIEVEMENTS (JUNE 2020)

- **20,913** individuals whose records have been updated as part of the joint exercise.
- **11** monitoring visits to detention centers were conducted.
- **1,534** complaints received under the community-based complaints mechanism.
- **265** partners, government and UNHCR staff trained on SGBV prevention and response.
- **746** adolescents participated in targeted programmes.

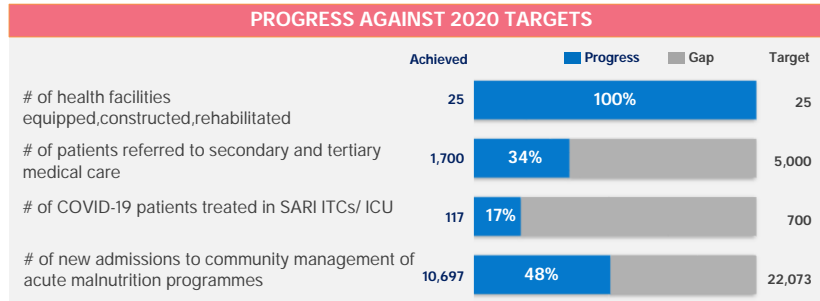
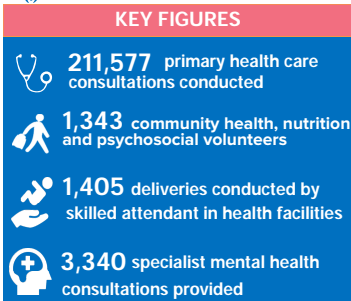
EDUCATION



ACHIEVEMENTS (JUNE 2020)

- Due to COVID-19 pandemic the usual learning activities have been suspended. Nonetheless, UNHCR worked with the education sector partners to disseminate the caregiver-led education guidelines in the camps to support caregivers and parents in facilitating some learning in their homes while the facilities remain closed.

HEALTH & NUTRITION







ACHIEVEMENTS (JUNE 2020)

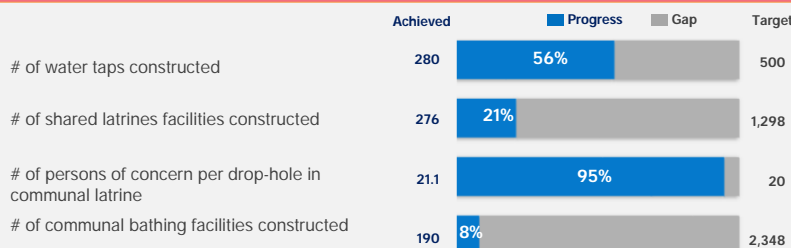
- **26,921** primary health care consultations were provided in health facilities.
- **112** new admission of COVID-19 patients.
- **410** mental health consultation were conducted and **23,087** refugees participated in group psycho-social activities.
- **4,508** new admissions to community management of acute malnutrition programmes reported.

WASH

KEY FIGURES

-  **39,583** WASH facilities assessed during a sweep survey in 2019
-  **574** Hygiene volunteers
-  **422** WASH hygiene kits distributed
-  **22,026** tube well and latrine maintenance conducted (repair, renovate, decommission and desludge)

PROGRESS AGAINST 2020 TARGETS









ACHIEVEMENTS (JUNE 2020)

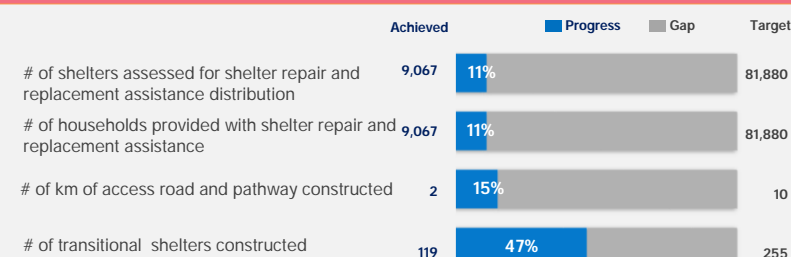
- 59** WASH facilities constructed, including **53** latrines and **06** taps.
- 6,187** WASH facilities have been maintained, including **1,392** tube wells and **4,795** latrines.

SHELTER

KEY FIGURES ³

-  **28** km of roads and pathways
-  **79** km of drainage
-  **63** km of retaining structures
-  **33** km of steps and
-  **4.8** km of bridges constructed
-  **176,156** shelter tie down kits distributed

PROGRESS AGAINST 2020 TARGETS



ACHIEVEMENTS (JUNE 2020)

- 3,312** partial shelter repair and replacement kits distributed.
- 32** transitional shelters have been constructed.

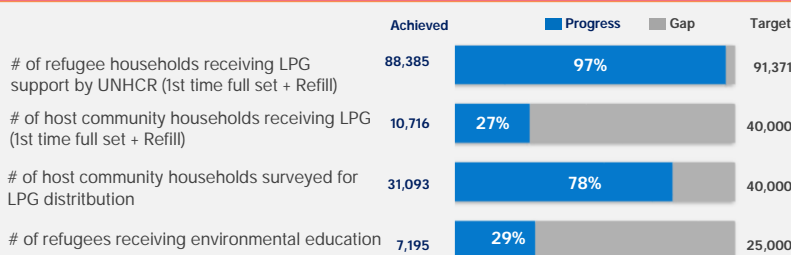
⁴ Comprehensive target which include targets from all UNHCR partners involved in shelter repair and replacement assistance distribution.

ENVIRONMENT & ENERGY

KEY FIGURES

-  **31,093** host community households have been assessed during LPG distribution assessment
-  **39** conflicts with elephants successfully mitigated by trained ERT* members

PROGRESS AGAINST 2020 TARGETS





ACHIEVEMENTS (JUNE 2020)

- 26** refugee households received 1st time LPG cylinder while LPG refills were distributed to **69,700** refugee households.
- 2,461** host community households have received LPG refill.

NFI & SITE MANAGEMENT

KEY FIGURES

-  **39,200** Emergency shelter and WASH kit (PDK) pre-positioned
-  **16** camps managed by site management support agency partners
-  **142,062** female/menstrual hygiene kits distributed

PROGRESS AGAINST 2020 TARGETS



ACHIEVEMENTS (JUNE 2020)

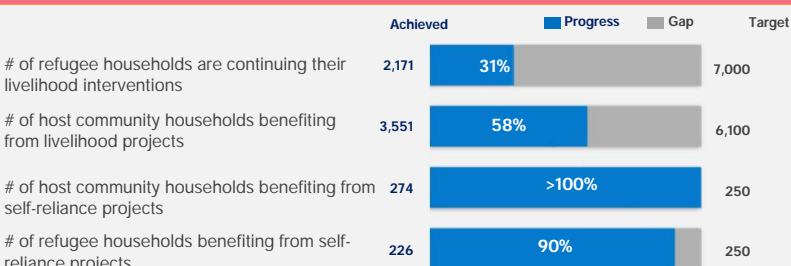
- 46** refugee households received core relief items.
- 26,106** female menstrual hygiene kits distributed to women age 12 to 59 year old.
- 45,923** households received double portion of bathing and laundry soap.

SOCIAL COHESION

KEY FIGURES

-  **3,551** host community and **3,523** refugee households are continuing their livelihood interventions
-  **500** host community and refugee households enrolled for skill development training for ensuring their self-reliance

PROGRESS AGAINST 2020 TARGETS



ACHIEVEMENTS (JUNE 2020)

- 3,827** new host community households included to be benefitted from 2020 livelihood projects.
- 1,352** refugee households have initiated their livelihood interventions with TUP projects.

THANK YOU

UNHCR's humanitarian response in Bangladesh is made possible thanks to the generous support of major donors who have contributed unrestricted funding to UNHCR's global operations, and to donors who have generously contributed directly to UNHCR Bangladesh operations.

In 2020, continued generous support has been received from the governments of: **Australia, Canada, Denmark, the European Union, France, Germany, Ireland, Italy, Japan, the Republic of Korea, the Netherlands, New Zealand, Norway, Sweden, Switzerland, the United Kingdom, and the United States of America.**

UNHCR is sincerely grateful for the additional support received from many individuals, foundations, and companies worldwide including **Bill & Melinda Gates Foundation, CERF, Education Cannot Wait, and Thani Bin Abdullah Bin Thani Al-Thani Humanitarian Fund.**