

KEY FIGURES

302,842
Total refugee population

98%

Living in camps and settlements
297,395

82%

Are Women and Children

66,976
Households

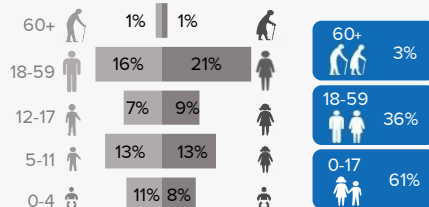
2%

Living in urban areas
5,447

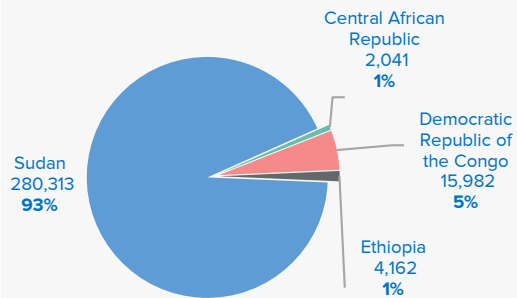
53%

Are female

Age and gender breakdowns

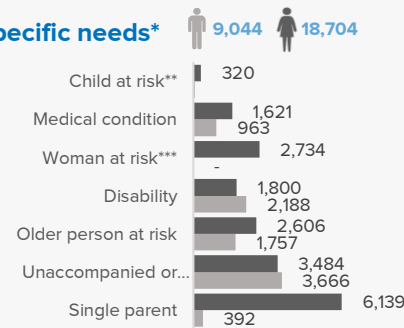


Main countries of origin*



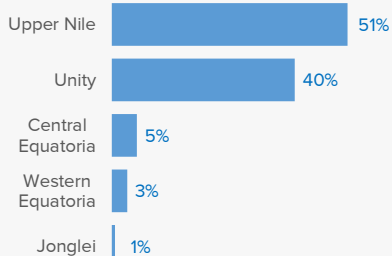
* Excludes 344 refugees from other countries

Main Specific needs*

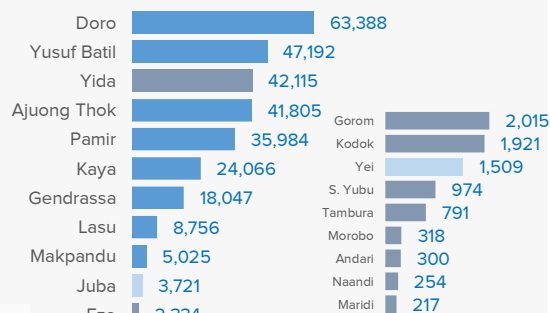


*Individual can have more than one specific need
**Excludes children at risk of not attending school
***Excludes lactating mothers

States hosting refugees



Refugee locations



Key
Urban Camp Settlement

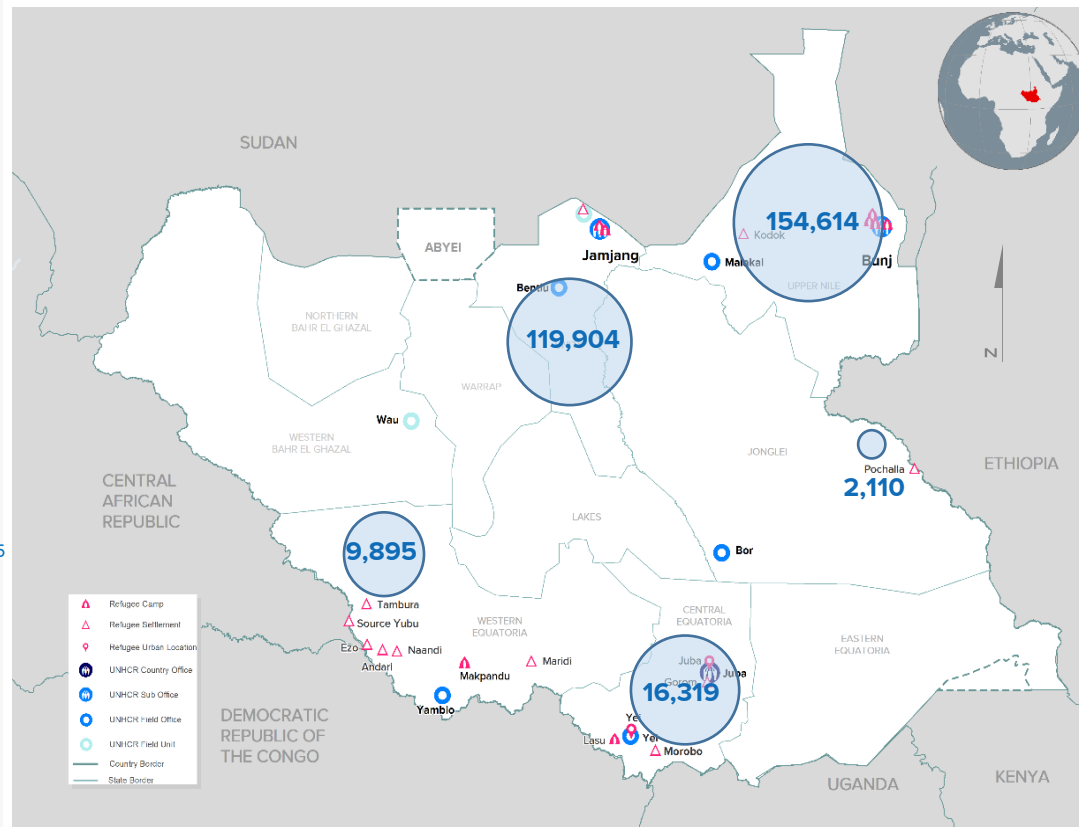
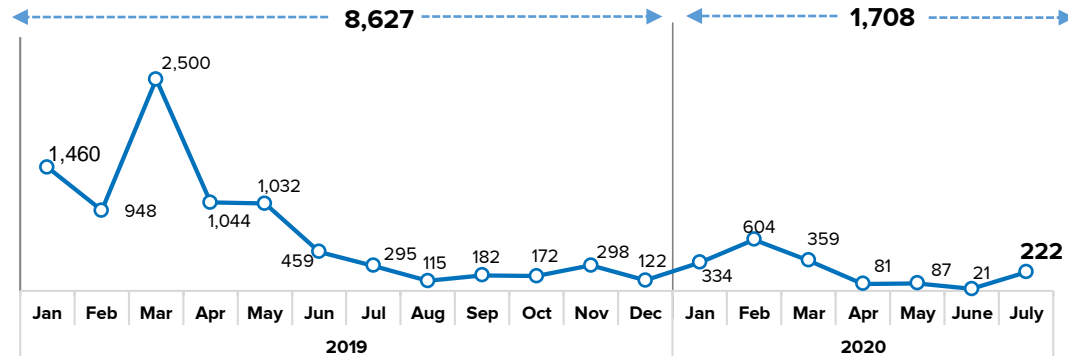
Our Partners

CRA, AAHI, ACROSS, ACTED, AHA, CARE, DRC, HDC, IMC, IRC, LWF, RI, SCI, SP, UMCOR, JRS and WVI.

Note: South Sudan hosts 3,787 asylum seekers (Juba -3,774; Makpandu-8; Maban-1; Pamir -4).

New arrivals trends

Jan 2019 – July 2020



South Sudan Refugee statistics: Population by Location, Sex and Age Group

as of the 31-July-2020



State	Location	0 - 4 years			5 - 11 years			12 - 17 years			18 - 59 years			60 years +			Total			Households		
		F	M	Total	F	M	Total	F	M	Total	F	M	Total	F	M	Total	F	M	Total	F	M	Total
Upper Nile	Doro	5,815	6,058	11,873	8,043	8,557	16,600	5,276	5,436	10,712	12,900	10,026	22,926	701	576	1,277	32,735	30,653	63,388	7,743	6,030	13,773
	Kaya	1,852	2,026	3,878	2,867	3,032	5,899	2,041	2,011	4,052	5,302	3,793	9,095	490	652	1,142	12,552	11,514	24,066	2,768	2,478	5,246
	Yusuf Batil	3,772	3,933	7,705	5,720	5,988	11,708	3,992	4,015	8,007	9,841	7,856	17,697	948	1,127	2,075	24,273	22,919	47,192	4,786	4,603	9,389
	Gendrassa	1,278	1,304	2,582	2,195	2,359	4,554	1,631	1,540	3,171	3,977	3,001	6,978	348	414	762	9,429	8,618	18,047	2,160	1,825	3,985
	Kodok	0	0	0	274	286	560	226	182	408	475	401	876	40	37	77	1,015	906	1,921	327	213	540
	Total	12,717	13,321	26,038	19,099	20,222	39,321	13,166	13,184	26,350	32,495	25,077	57,572	2,527	2,806	5,333	80,004	74,610	154,614	17,784	15,149	32,933
Unity State	Ajounj Thok	3,613	3,628	7,241	5,241	5,345	10,586	4,009	4,300	8,309	8,221	6,833	15,054	370	245	615	21,454	20,351	41,805	5,005	3,008	8,013
	Pamir	3,657	3,659	7,316	4,832	4,952	9,784	3,371	3,118	6,489	7,273	4,597	11,870	326	199	525	19,459	16,525	35,984	5,553	2,103	7,656
	Yida	3,157	3,257	6,414	6,354	6,519	12,873	4,467	4,095	8,562	9,793	3,783	13,576	429	261	690	24,200	17,915	42,115	6,405	1,841	8,246
	Total	10,427	10,544	20,971	16,427	16,816	33,243	11,847	11,513	23,360	25,287	15,213	40,500	1,125	705	1,830	65,113	54,791	119,904	16,963	6,952	23,915
Central Equatoria	Gorom	171	176	347	211	236	447	165	183	348	439	396	835	27	11	38	1,013	1,002	2,015	324	310	634
	Juba	109	95	204	212	192	404	135	130	265	454	2,272	2,726	7	115	122	917	2,804	3,721	243	2,291	2,534
	Lasu	169	177	346	1,238	1,238	2,476	810	795	1,605	2,114	1,824	3,938	250	141	391	4,581	4,175	8,756	1,258	1,201	2,459
	Morobo	5	8	13	54	48	102	26	43	69	71	52	123	4	7	11	160	158	318	38	41	79
	Yei	87	101	188	170	206	376	137	145	282	271	358	629	15	19	34	680	829	1,509	224	305	529
	Total	541	557	1,098	1,885	1,920	3,805	1,273	1,296	2,569	3,349	4,902	8,251	303	293	596	7,351	8,968	16,319	2,087	4,148	6,235
Jonglei State	Pochalla	212	214	426	206	247	453	190	234	424	574	168	742	52	13	65	1,234	876	2,110	435	87	522
	Total	212	214	426	206	247	453	190	234	424	574	168	742	52	13	65	1,234	876	2,110	435	87	522
Western Equatoria	Andari	0	0	0	50	48	98	18	25	43	86	52	138	8	13	21	162	138	300	60	61	121
	Ezo	1	2	3	256	281	537	151	153	304	791	503	1,294	105	91	196	1,304	1,030	2,334	557	424	981
	Makpandu	443	501	944	598	557	1,155	361	326	687	1,113	1,006	2,119	49	71	120	2,564	2,461	5,025	692	848	1,540
	Maridi	6	4	10	26	25	51	23	24	47	45	62	107	0	2	2	100	117	217	31	52	83
	Naandi	0	0	0	40	36	76	24	29	53	55	52	107	8	10	18	127	127	254	39	45	84
	Source yubu	0	0	0	141	171	312	90	89	179	288	162	450	16	17	33	535	439	974	196	124	320
	Tambura	0	1	1	145	157	302	85	73	158	200	118	318	8	4	12	438	353	791	147	95	242
	Total	450	508	958	1,256	1,275	2,531	752	719	1,471	2,578	1,955	4,533	194	208	402	5,230	4,665	9,895	1,722	1,649	3,371
Grand total		24,347	25,144	49,491	38,873	40,480	79,353	27,228	26,946	54,174	64,283	47,315	111,598	4,201	4,025	8,226	158,932	143,910	302,842	38,991	27,985	66,976

South Sudan Statistics: Population by Country of Origin, Sex and Age Group

as of the 31-July-2020



Country of Origin	Settlement	Households (HHs)			Persons																		
		Total HHs	Female headed		0 - 4 years			5 - 11 years			12 - 17 years			18 - 59 years			60 years +			Total			
			HHs	%	F	M	T	F	M	T	F	M	T	F	M	T	F	M	T	F	M	T	
CENTRAL AFRICAN REPUBLIC	Andari	1	-	0%	0	0	0	0	0	0	0	0	0	0	1	1	0	0	0	0	1	1	0
	Ezo	13	8	62%	0	0	0	3	6	9	2	4	6	13	4	17	1	2	3	19	16	35	
	Makpandu	114	24	21%	21	29	50	19	25	44	16	15	31	50	94	144	0	6	6	106	169	275	
	Naandi	7	4	57%	0	0	0	1	7	8	1	0	1	5	3	8	0	0	0	7	10	17	
	SourceYubu	308	188	61%	0	0	0	136	171	307	87	87	174	279	158	437	15	15	30	517	431	948	
	Tambura	228	139	61%	0	1	1	139	152	291	84	71	155	191	112	303	6	4	10	420	340	760	
	Juba	1	-	0%	0	0	0	0	0	0	2	1	3	1	1	2	0	0	0	3	2	5	
Total	672	363	54%	21	30	51	298	361	659	192	178	370	539	373	912	22	27	49	1,072	969	2,041		
DEMOCRATIC REPUBLIC OF THE CONGO	Gorom	1	-	0%	1	-	1	-	1	1	-	1	1	-	-	-	-	1	1	1	3	4	
	Andari	120	60	50%	-	-	-	50	48	98	18	25	43	86	51	137	8	13	21	162	137	299	
	Ezo	968	549	57%	1	2	3	253	275	528	149	149	298	778	499	1,277	104	89	193	1,285	1,014	2,299	
	Juba	18	5	28%	-	1	1	5	2	7	3	3	6	6	10	16	2	3	5	16	19	35	
	Lasu	2,212	1,198	54%	152	172	324	1,139	1,133	2,272	741	703	1,444	2,004	1,597	3,601	249	137	386	4,285	3,742	8,027	
	Makpandu	1,244	624	50%	380	407	787	483	445	928	285	264	549	934	720	1,654	48	56	104	2,130	1,892	4,022	
	Morobo	79	38	48%	5	8	13	54	48	102	26	43	69	71	52	123	4	7	11	160	158	318	
	Naandi	77	35	45%	-	-	-	39	29	68	23	29	52	50	49	99	8	10	18	120	117	237	
	SourceYubu	12	8	67%	-	-	-	5	-	5	3	2	5	9	4	13	1	2	3	18	8	26	
	Tambura	14	8	57%	-	-	-	6	5	11	1	2	3	9	6	15	2	-	2	18	13	31	
Yei	252	170	67%	47	55	102	76	88	164	50	64	114	178	101	279	15	10	25	366	318	684		
Total	4,997	2,695	54%	586	645	1,231	2,110	2,074	4,184	1,299	1,285	2,584	4,125	3,089	7,214	441	328	769	8,561	7,421	15,982		
ETHIOPIA	Doro	1	-	1	2	-	2	2	-	2	-	-	-	3	1	4	-	-	-	7	1	8	
	Gorom	628	324	52%	169	174	343	208	233	441	163	182	345	438	391	829	27	10	37	1,005	990	1,995	
	Juba	15	3	0%	1	-	1	1	2	3	-	-	-	9	13	22	-	-	-	11	15	26	
	Makpandu*	7	2	0%	1	-	1	1	1	2	1	-	1	2	5	7	-	-	-	5	6	11	
	Pochalla	522	435	83%	212	214	426	206	247	453	190	234	424	574	168	742	52	13	65	1,234	876	2,110	
	Kodok	2	1	50%	-	-	-	1	1	2	2	-	2	2	-	2	-	-	-	5	1	6	
	Ajuong Thok	1	1	100%	-	1	1	-	1	1	-	-	-	2	2	4	-	-	-	2	4	6	
Total	1,176	766	4	385	389	774	419	485	904	356	416	772	1,030	580	1,610	79	23	102	2,269	1,893	4,162		
SUDAN	Ajuong Thok	8,012	5,004	62%	3,613	3,627	7,240	5,241	5,344	10,585	4,009	4,300	8,309	8,219	6,831	15,050	370	245	615	21,452	20,347	41,799	
	Yusif Batil	9,389	4,786	51%	3,772	3,933	7,705	5,720	5,988	11,708	3,992	4,015	8,007	9,841	7,856	17,697	948	1,127	2,075	24,273	22,919	47,192	
	Doro	13,772	7,743	56%	5,813	6,058	11,871	8,041	8,557	16,598	5,276	5,436	10,712	12,896	10,025	22,921	701	576	1,277	32,727	30,652	63,379	
	Gendrassa	3,985	2,160	54%	1,278	1,304	2,582	2,195	2,359	4,554	1,631	1,540	3,171	3,977	3,001	6,978	348	414	762	9,429	8,618	18,047	
	Gorom	4	-	4	1	2	3	3	2	5	2	-	2	1	4	5	-	-	-	7	8	15	
	Juba	2,290	216	9%	98	88	186	200	186	386	130	124	254	401	2,063	2,464	5	104	109	834	2,565	3,399	
	Kaya	5,246	2,768	53%	1,852	2,026	3,878	2,867	3,032	5,899	2,041	2,011	4,052	5,302	3,793	9,095	490	652	1,142	12,552	11,514	24,066	
	Kodok	538	326	61%	-	-	-	273	285	558	224	182	406	473	401	874	40	37	77	1,010	905	1,915	
	Lasu	247	60	24%	17	5	22	99	105	204	69	92	161	110	227	337	1	4	5	296	433	729	
	Makpandu	123	35	28%	38	59	97	88	82	170	59	46	105	112	141	253	-	7	7	297	335	632	
	Maridi	83	31	37%	6	4	10	26	25	51	23	24	47	45	62	107	-	2	2	100	117	217	
	Pamir	7,656	5,553	73%	3,657	3,659	7,316	4,832	4,952	9,784	3,371	3,118	6,489	7,273	4,597	11,870	326	199	525	19,459	16,525	35,984	
	Yei	277	54	19%	40	46	86	94	118	212	87	81	168	92	257	349	-	9	9	313	511	824	
	Yida	8,246	6,405	78%	3,157	3,257	6,414	6,354	6,519	12,873	4,467	4,095	8,562	9,793	3,783	13,576	429	261	690	24,200	17,915	42,115	
Total	59,868	35,141	59%	23,342	24,068	47,410	36,033	37,554	73,587	25,381	25,064	50,445	58,535	43,041	101,576	3,658	3,637	7,295	146,949	133,364	280,313		
Others*	Others*	263	26	10%	14	15	29	12	3	15	-	4	4	54	231	285	1	10	11	81	263	344	
	Total	263	26	10%	14	15	29	12	3	15	-	4	4	54	231	285	1	10	11	81	263	344	
Grand Total	66,976	38,991	58%	24,348	25,147	49,495	38,872	40,477	79,349	27,228	26,947	54,175	64,283	47,314	111,597	4,201	4,025	8,226	158,932	143,910	302,842		

* Refers to refugees from Uganda, Somalia, Eritrea, Syria, Burundi and Egypt spread in Gorom, Lasu, Juba, Makpandu and Doro.

Asylum Seekers Population by Country of Origin, Sex and Age Group in South Sudan

as of the 31-July-2020



Country of Origin	Location	Principal Applicants			Persons																	
		Total Cases	Female headed		0 - 4 years			5 - 11 years			12 - 17 years			18 - 59 years			60 years +			Total		
			Cases	%	F	M	T	F	M	T	F	M	T	F	M	T	F	M	T	F	M	T
BURUNDI	Juba	742	21	3%	18	13	31	10	9	19	3	4	7	74	723	797	0	0	0	105	749	854
	Total	742	21	3%	18	13	31	10	9	19	3	4	7	74	723	797	-	-	-	105	749	854
CHAD	Juba	1	-	0%	-	-	-	-	-	-	-	-	-	-	1	1	-	-	-	-	1	1
	Total	1	-	3%	-	-	-	-	-	-	-	-	-	-	1	1	-	-	-	-	1	1
CAMEROON	Juba	2	-	0%	-	-	-	-	-	-	-	-	-	-	2	2	-	-	-	-	2	2
	Makpandu	2	-	0%	-	-	-	-	-	-	-	-	-	-	2	2	-	-	-	-	2	2
	Total	4	-	0%	-	-	-	-	-	-	-	-	-	-	4	4	-	-	-	-	4	4
ERITREA	Juba	1,939	376	18%	99	150	249	45	45	90	1	8	9	539	1,544	2,083	6	57	63	690	1,804	2,494
	Makpandu	3	-	0%	-	-	-	-	-	-	-	-	-	-	3	3	-	-	-	-	3	3
	Total	1,942	376	19%	99	150	249	45	45	90	1	8	9	539	1,547	2,086	6	57	63	690	1,807	2,497
ETHIOPIA	Doro	1	-	0%	-	-	-	-	-	-	-	-	-	-	1	1	-	-	-	-	1	1
	Juba	272	61	18%	8	19	27	11	6	17	1	-	1	114	210	324	-	2	2	134	237	371
	Makpandu	2	-	0%	-	-	-	-	-	-	-	-	-	-	2	2	-	-	-	-	2	2
	Total	275	61	22%	8	19	27	11	6	17	1	-	1	114	213	327	-	2	2	134	240	374
SOMALIA	Juba	30	1	3%	-	-	-	-	-	-	-	-	-	1	29	30	-	-	-	1	29	30
	Total	30	1	3%	-	-	-	-	-	-	-	-	-	1	29	30	-	-	-	1	29	30
SUDAN	Juba	7	-	0%	-	1	1	-	-	-	-	-	-	2	5	7	-	2	2	2	8	10
	Pamir	-	-	0%	-	-	-	-	-	-	-	-	-	-	4	4	-	-	-	-	4	4
	Total	7	-	0%	-	1	1	-	-	-	-	-	-	2	9	11	-	2	2	2	12	14
SYRIA	Juba	1	-	0%	-	-	-	-	-	-	-	-	-	1	1	-	-	-	-	-	1	1
	Makpandu	1	-	0%	-	-	-	-	-	-	-	-	-	1	1	-	-	-	-	1	-	1
	Total	2	-	0%	-	-	-	-	-	-	-	-	-	2	2	-	-	-	-	1	1	2
EGYPT UGANDA DRC Yemen	Juba	1	-	0%	-	-	-	-	-	-	-	-	-	1	1	-	-	-	-	-	1	1
	Juba	1	-	0%	-	-	-	-	-	-	-	-	-	1	1	-	-	-	-	-	1	1
	Juba	4	-	0%	2	-	2	-	-	-	-	-	-	1	4	5	-	-	-	3	4	7
	Juba	2	-	0%	-	-	-	-	-	-	-	-	-	-	2	2	-	-	-	-	2	2
	Total	8	-	0%	2	-	2	-	-	-	-	-	-	1	8	9	-	-	-	3	8	11
Grand Total		3,011	459	1	127	183	310	66	60	126	5	12	17	731	2,536	3,267	6	61	67	936	2,851	3,787