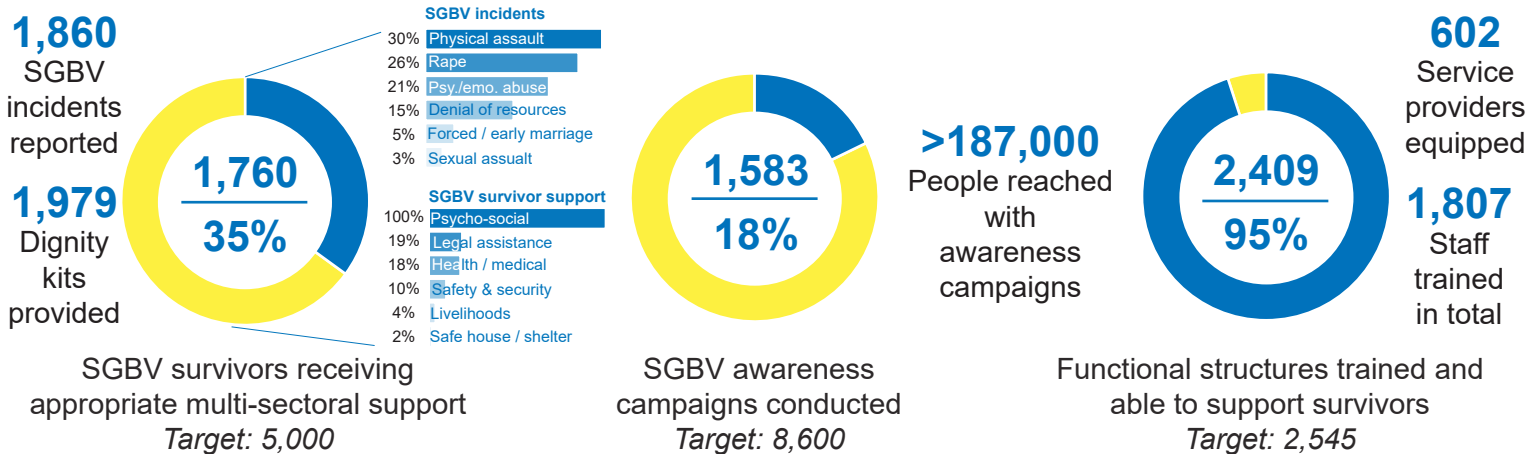




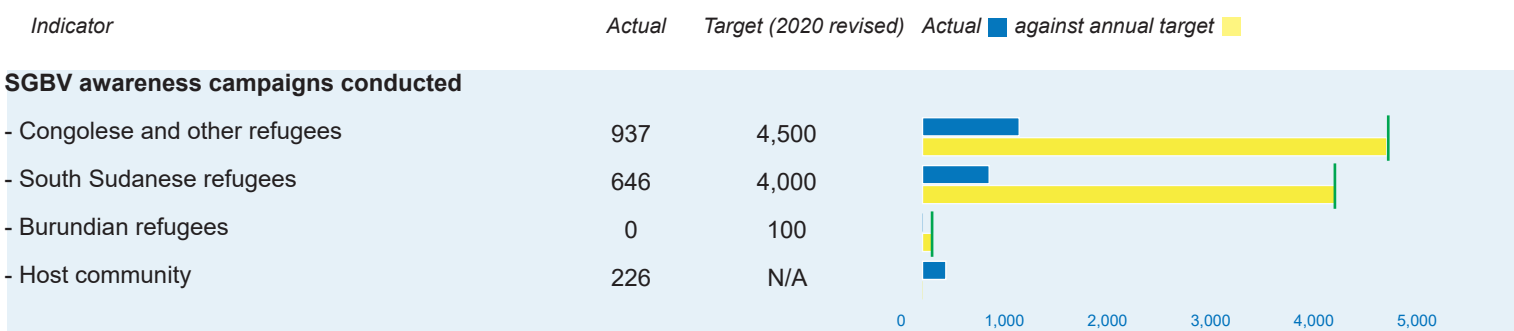
### Overview

Awareness-raising remains key to improve understanding of SGBV, Sexual Exploitation and Abuse (SEA), human trafficking and existing mechanisms to report such these incidents, including through the development and dissemination of simplified referral pathways. Basic assistance for vulnerable individuals will continue with a view to reduce reliance on negative coping mechanisms and exposure to SGBV risk. Investment in infrastructure and assets is also crucial in preventing and responding to SGBV, including installation of security lights in common areas, establishment of safe spaces and wellness centres for women, psychosocial, medical and legal supports for SGBV survivors, and procurement of additional vehicles and motorcycles to enhance police mobility on patrol and outreach. Linkages with the Livelihood & Resilience sector are of particular importance, both in terms of prevention (economic empowerment of men and women) and response (livelihood support for SGBVs survivors).

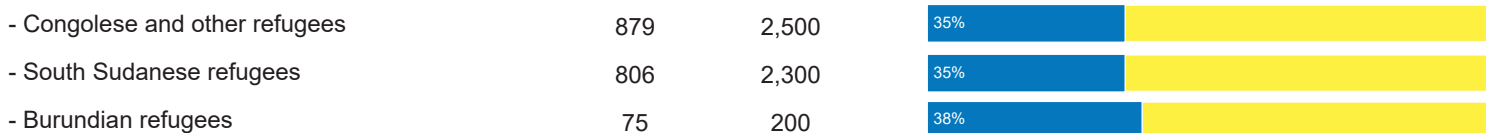
### Key indicators



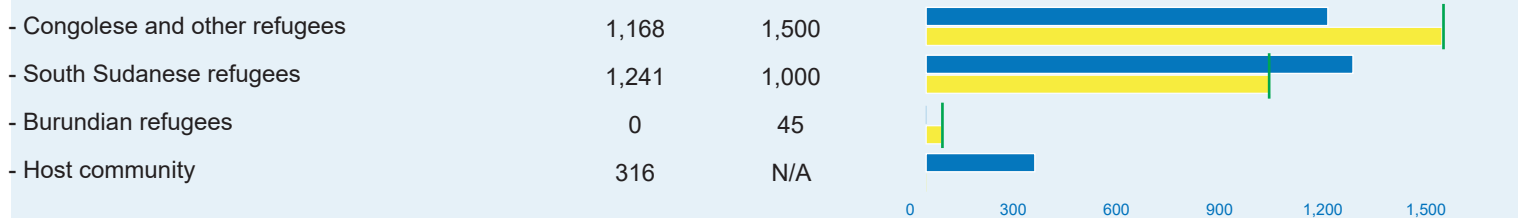
**Objective: Protection systems are strengthened and refugees women and girls are aware of the existing referral pathways with the aim of ensuring their full enjoyment of rights, reduction of SGBV risks and reinforced multi-sectoral response including through mainstreaming of SGBV across all sectors**



### SGBV survivors receiving appropriate multi-sectoral support



### Functional structures (duty bearers) trained and able to support survivors



# Operational Presence

## Koboko

HADS, UNHCR

## Yumbe

Alight, CARE, IRC, TPO, UNFPA, UNHCR, UNWOMEN, WVI

## Adjumani

CARE, LWF, UNHCR

## Arua

CARE, DRC, TPO, UNHCR, UNWOMEN, WVI

## Kikuube

Alight, CAFOMI, CARE, LWF, TPO, UNFPA, UNHCR

## Kyegegwa

Alight, IRC, TPO, UNHCR, UNWOMEN

## Kamwenge

Alight, LWF, UNHCR

## Kisoro

CAFOMI, UNHCR

## Lamwo

CARE, LWF, UNFPA, UNHCR

## Obongi

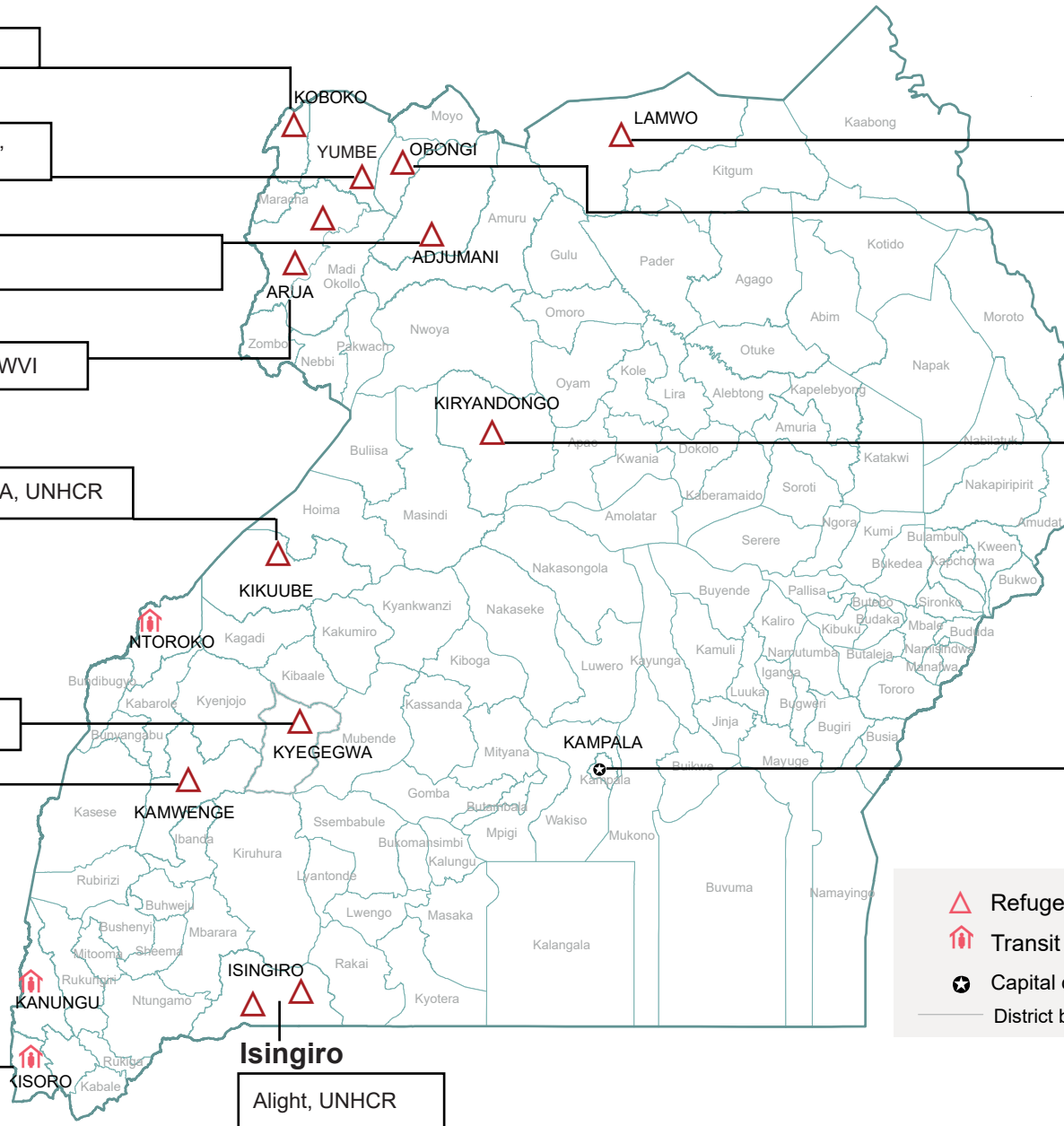
CARE, LWF, UNFPA, UNHCR

## Kiryandongo

ACORD, DRC, TPO, UNFPA, UNHCR, UNWOMEN

## Kampala

CAFOMI, IRC, NRC, UNHCR



- Refugee settlement
- Transit centre
- Capital city
- District boundary