

KEY POPULATION STATISTICS

4.15 MILLION
TOTAL DISPLACED SOUTH SUDANESE

2.28 MILLION
REFUGEES AND ASYLUM-SEEKERS
IN CAR, DRC, ETHIOPIA, KENYA,
SUDAN AND UGANDA

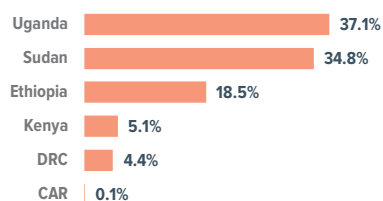
1.87 MILLION
INTERNALLY DISPLACED IN SOUTH SUDAN

The South Sudan situation, now entering its sixth year, is the largest refugee crisis in Africa, and the world's third biggest. Over one third of South Sudan's estimated 12 million citizens are displaced, while more than half of the population is affected by the crisis.

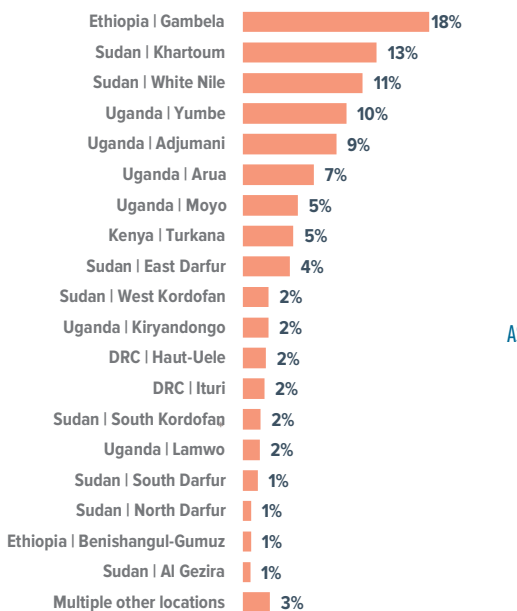
Close to 2.3 million South Sudanese have been displaced outside their country, the vast majority of whom are women and children. Uganda continues to host the largest number, followed by Sudan, Ethiopia, Kenya, the Democratic Republic of the Congo (DRC) and the Central African Republic (CAR). The South Sudanese displaced population stood at 508,600 in mid-2014 and thus has increased four-fold in only four years.

DISPLACEMENT OF REFUGEES AND ASYLUM-SEEKERS FROM SOUTH SUDAN IN NEIGHBOURING COUNTRIES

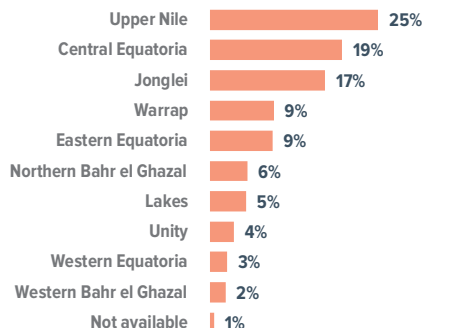
DISTRIBUTION BY HOST COUNTRIES



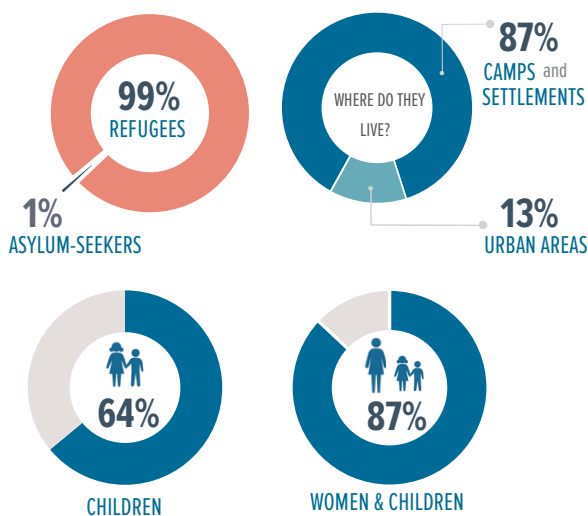
AREAS HOSTING SOUTH SUDANESE IN COUNTRIES OF ASYLUM



AREAS OF ORIGIN IN SOUTH SUDAN



DEMOGRAPHICS and LOCATION Information

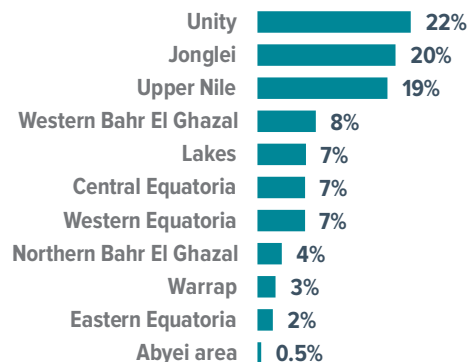


* Refugee profile statistics based on UNHCR Global Trends Report 2017

INTERNAL DISPLACEMENT IN SOUTH SUDAN

The conflict and violence which erupted in South Sudan after December 2013 increased the number of IDPs significantly, from 189,000 to 1.87 million people as of January 2019. About 2.3 million have fled as refugees to neighboring Uganda, Kenya, Ethiopia, Sudan, Central African Republic (CAR), and the Democratic Republic of Congo (DRC).

DISTRIBUTION OF INTERNALLY DISPLACED PERSONS PER STATE



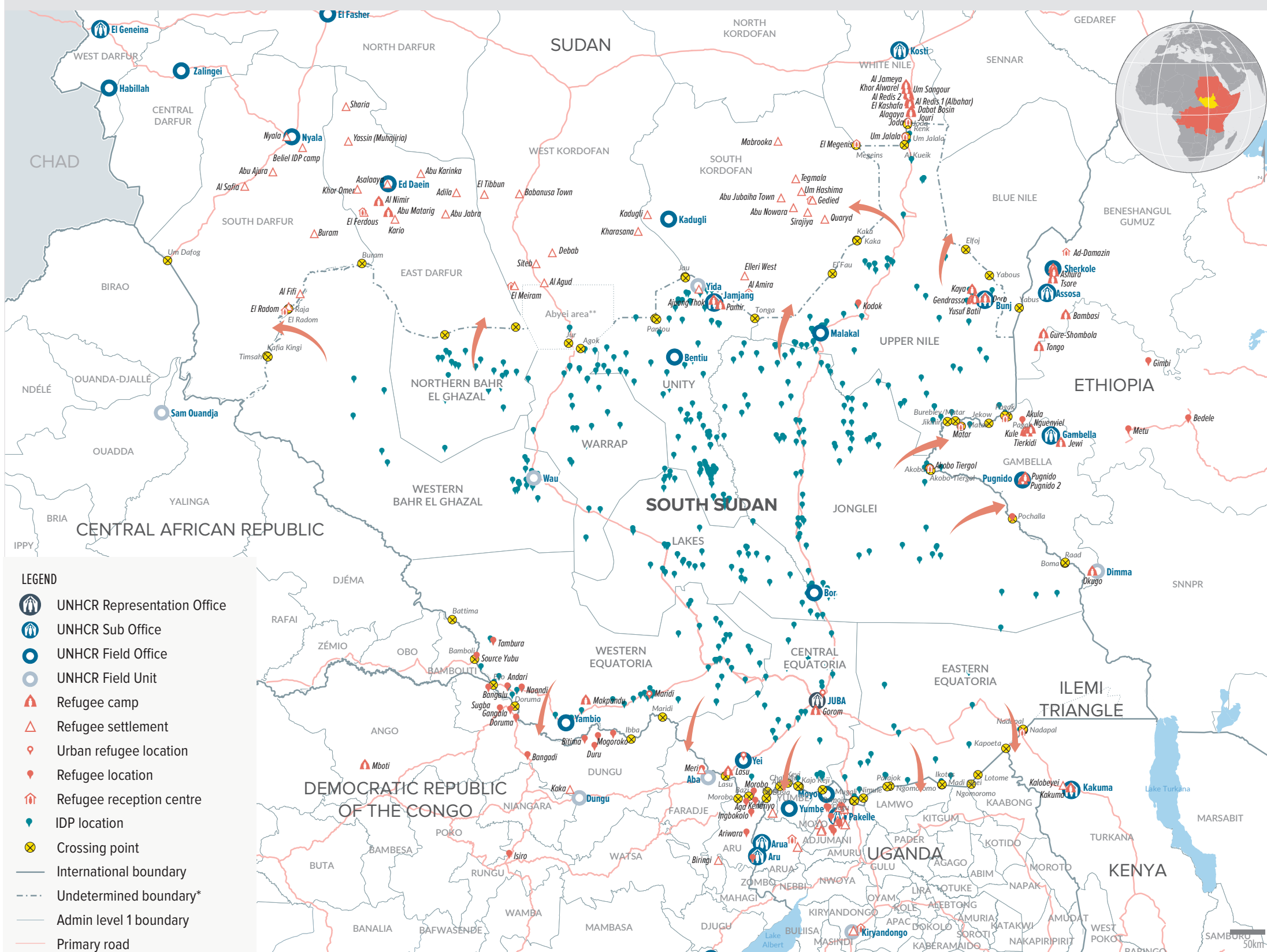
DISTRIBUTION OF IDPS BY LOCATION TYPE



As of 17 January 2019, a total of number of civilians seeking safety in six Protection of Civilians (PoC) sites located on UNMISS bases is 193,219 including 114,330 in Bentiu, 29,190 in Malakal, 32,134 in Juba UN House, 2,177 in Bor, and 116 in UNMISS base and 15,272 in the area adjacent to UNMISS in Wau.

Source: UNMISS POC Update, 21 January 2019

LOCATION OF SOUTH SUDANESE IN NEIGHBOURING COUNTRIES



The boundaries and names shown and the designations used on this map do not imply official endorsement or acceptance by the United Nations. Final boundaries between the Republic of Sudan and the Republic of South Sudan and Somalia and Ethiopia has not yet been determined.

Creation date: 05 Mar 2019 Sources: Geographic data: UNCS. Author: UNHCR Regional Service Centre in Nairobi Feedback: kenrsgis@unhcr.org