



Zambia

As of April 2013

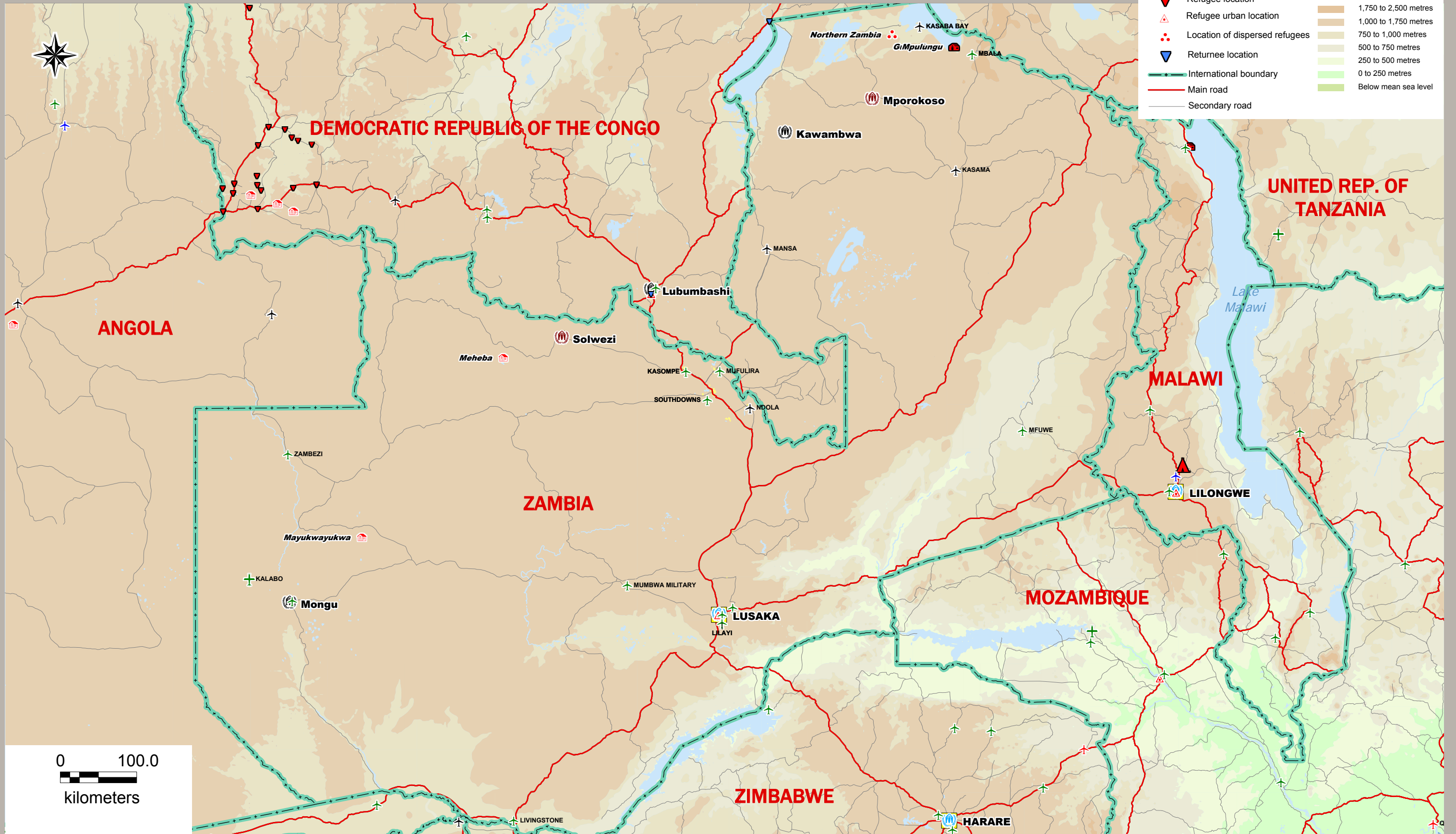
FIGSS
Field Information and
Coordination Support Section

Sources:
UNHCR, Global Insight digital mapping
© 1998 Europa Technologies Ltd.

The boundaries and names shown
and the designations used on this
map do not imply official endorsement
or acceptance by the United Nations.



- Capital
 - UNHCR Country Office / Liaison Office
 - UNHCR Sub-Office
 - UNHCR Field Office
 - Refugee settlement
 - Refugee transit centre
 - Refugee camp
 - Refugee location
 - Refugee urban location
 - Location of dispersed refugees
 - Returnee location
 - International boundary
 - Main road
 - Secondary road
 - Civil airport
 - Civil and military airport
 - Military airport
 - Other airfield
- Elevation**
(Above mean sea level)
- 3,250 to 4,000 metres
 - 2,500 to 3,250 metres
 - 1,750 to 2,500 metres
 - 1,000 to 1,750 metres
 - 750 to 1,000 metres
 - 500 to 750 metres
 - 250 to 500 metres
 - 0 to 250 metres
 - Below mean sea level



0 100.0
kilometers