

Kenya

As of May 2010
(Statistics as at end December 2009)

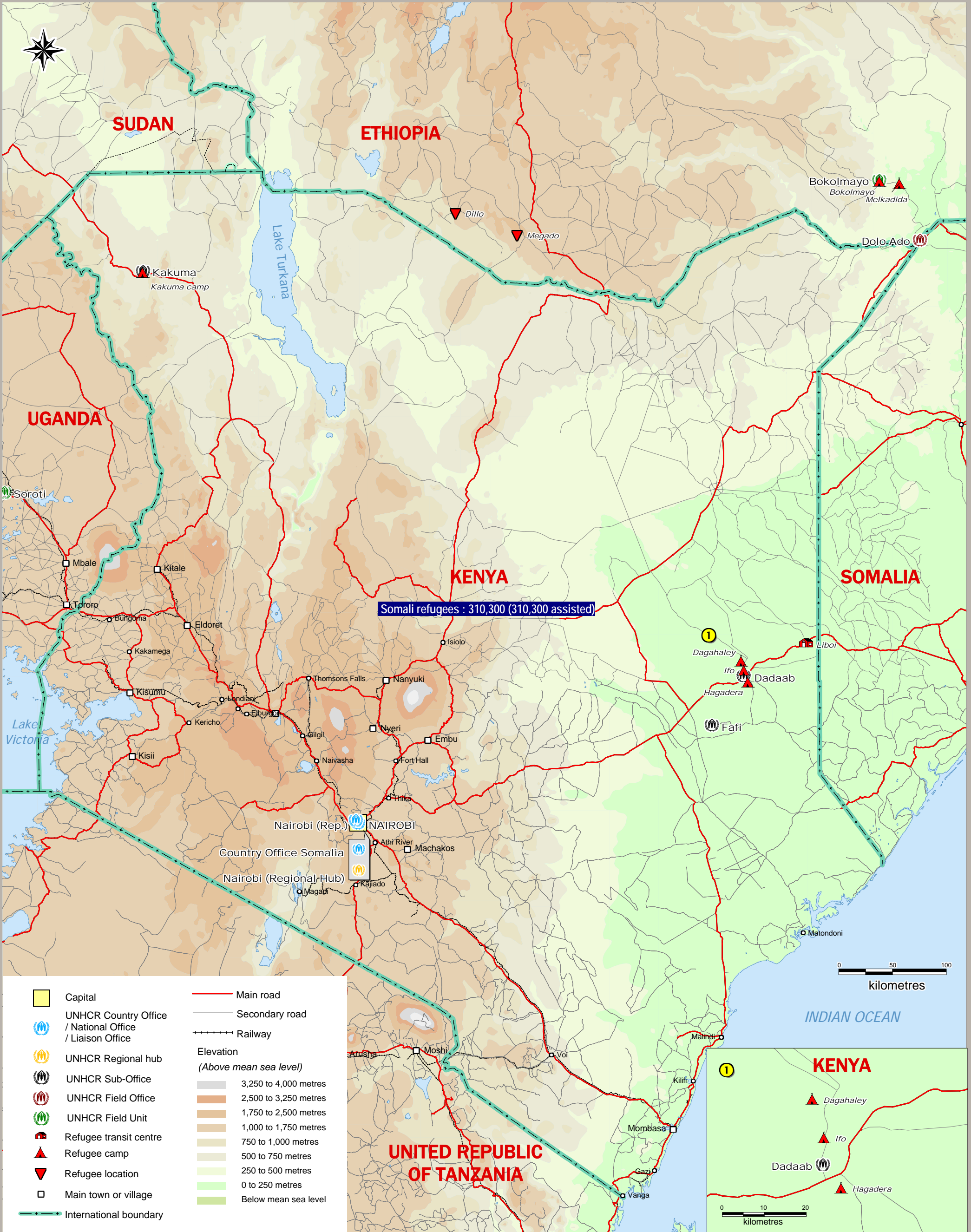
FIGSS
Field Information and
Coordination Support Section
Division of Operational Services

Sources:
UNHCR, Global Insight digital mapping
© 1998 Europa Technologies Ltd.

The boundaries and names shown
and the designations used on this
map do not imply official endorsement
or acceptance by the United Nations.



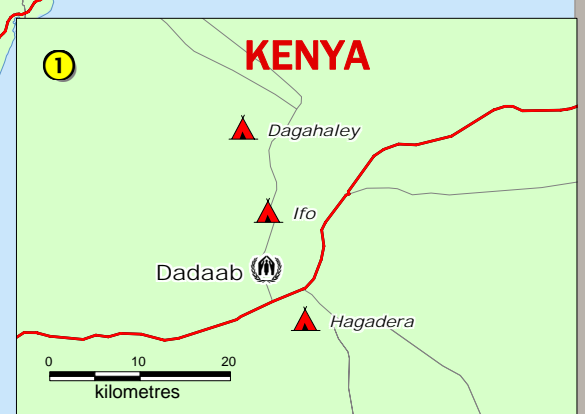
Kenya Atlas_A3PC/WDOR



Somali refugees : 310,300 (310,300 assisted)

- | | | | |
|--|---|--|-----------------------|
| | Capital | | Main road |
| | UNHCR Country Office / National Office / Liaison Office | | Secondary road |
| | UNHCR Regional hub | | Railway |
| | UNHCR Sub-Office | Elevation
(Above mean sea level) | |
| | UNHCR Field Office | | 3,250 to 4,000 metres |
| | UNHCR Field Unit | | 2,500 to 3,250 metres |
| | Refugee transit centre | | 1,750 to 2,500 metres |
| | Refugee camp | | 1,000 to 1,750 metres |
| | Refugee location | | 750 to 1,000 metres |
| | Main town or village | | 500 to 750 metres |
| | International boundary | | 250 to 500 metres |
| | | | 0 to 250 metres |
| | | | Below mean sea level |

0 50 100
kilometres



0 10 20
kilometres