



# Performance Snapshot

Quarter 3

## Uganda Refugee Response Plan (RRP) 2020-2021

January - September 2020



**67,743**  
Refugees & Asylum Seekers  
**10,389 HHs**

**Kiryandongo Refugee Settlement**  
**Arua Sub-Office**



**22**  
Partners

Sector	Actual status per key indicator	Target/Standard (2020 revised)	Actual <span style="color: blue;">■</span> against annual target <span style="color: yellow;">■</span> or standard <span style="color: grey;">■</span>
Education	68% children of school going age enrolled in primary school <i>(Based on 2020 Q1 data)</i>	100%	<span style="color: blue;">68%</span> <span style="color: yellow;">32%</span>
Education	The pupil teacher ratio for primary schools was 1:68 <i>(Based on 2020 Q1 data)</i>	1:71	<span style="color: blue;">Actual</span> <span style="color: yellow;">Target</span>
Environment & Energy	2,893 households using alternative and/or renewable energy <i>(2018 + 2019 + Q2 2020 achievement)</i>	9,347 <i>(target)</i> 1/HH <i>(standard)</i>	<span style="color: blue;">31%</span> <span style="color: yellow;">0%</span> <span style="color: grey;">59%</span> <span style="color: lightgrey;">10%</span> <i>2019 achievement 2020 contribution 2020 target</i>
Environment & Energy	57.31 hectares of forests, wetlands, riverbanks and lakeshores protected and restored	110 ha	<span style="color: blue;">52%</span>
Food Security	66,664 refugees received monthly cash for food and in-kind assistance <i>(75% cash and 24% food)</i>	67,743 Individuals	<span style="color: blue;">Cash</span> <span style="color: yellow;">In-kind</span>
Food Security	24% of HH with poor or borderline Food Consumption Score	18% <i>(original 2020 target)</i> <20% <i>(standard)</i>	<span style="color: blue;">Actual</span> <span style="color: yellow;">Target/standard</span>
Health & Nutrition	The severe Acute Malnutrition recovery rate was 100%	75% <i>(target)</i> > 75% <i>(standard)</i>	<span style="color: blue;">Actual</span> <span style="color: yellow;">Target/standard</span>
Health & Nutrition	The under-five mortality rate was 0.1 per 1,000 children	0.1 <i>(target)</i> < 1.5 <i>(standard)</i>	<span style="color: blue;">Actual</span> <span style="color: yellow;">Target/standard</span>
Livelihoods & Resilience	1,874 Refugee households received emergency livelihood support	6,605 HHs	<span style="color: blue;">28%</span>
Livelihoods & Resilience	345 refugees received financial literacy training	2,000 Individuals	<span style="color: blue;">17%</span>
Child Protection	1,024 children receiving individual case management services	2,067 Individuals	<span style="color: blue;">50%</span>
SGBV	91 SGBV survivors received appropriate multi-sectoral support	112 Individuals	<span style="color: blue;">81%</span>
Protection	1,632 refugees received psychosocial support	8,000 Individuals	<span style="color: blue;">20%</span>
Protection	486 refugees received legal assistance and legal aid services	10,000 Individuals <i>(Original 2020 target)</i>	<span style="color: blue;">5%</span>
Shelter, Settlement & NFI	17 New arrivals NFI kits were distributed	393 HHs	<span style="color: blue;">4%</span>
Shelter, Settlement & NFI	199 established households received in kind NFI support	10,379 HHs	<span style="color: blue;">2%</span>
Water, Sanitation & Hygiene	15.41 litres per person per day	20 litres <i>(target)</i> 20 litres <i>(standard)</i>	<span style="color: blue;">Actual</span> <span style="color: yellow;">Target/standard</span>
Water, Sanitation & Hygiene	79% household latrine coverage	75% <i>(target)</i> ≥ 85% <i>(standard)</i>	<span style="color: blue;">Actual</span> <span style="color: yellow;">Target/standard</span>
Cash-Based Interventions	1,972 households received any form of cash and voucher assistance <i>(including CBI for SSNFI and L&amp;R)</i>	10,000 HHs	<span style="color: blue;">20%</span>
Cash-Based Interventions	8,789 households received cash and voucher assistance for basic needs <i>(multipurpose cash)</i>	10,000 HHs	<span style="color: blue;">88%</span>



# Operational Presence

Quarter 3

## Kiryandongo Refugee Settlement

January - September 2020



**02**  
National  
Partners



**12**  
International  
NGOs



**06**  
UN  
Agencies



**02**  
Government  
Partners



Partner/Sector	Education	E&E	Food Security	Health & Nutrition	Livelihood	Protection	CP	SGBV	SSNFI	WASH	CBI
ACF				IP	OP						
ACORD								IP			
AFI			IP								
AIRD									IP		
BRAC	OP				OP					OP	
C-TEN						IP					
DCA		IP									
DRC						IP	IP	IP	IP	OP	
Give Directly											OP
IRC				IP							
KDLG				GP							
OPM						GP					
SCI	OP				OP		IP				
TPO						IP		IP			
UNFPA				A				A			
UNHCR	A	A		A		A	A	A	A	A	
UNICEF				A			A				
UNWOMEN								A			
WFP			A	A							A
WHO				A							
WIU	IP										
WMU										IP	
<b>Total #</b>	<b>4</b>	<b>2</b>	<b>2</b>	<b>8</b>	<b>3</b>	<b>5</b>	<b>4</b>	<b>6</b>	<b>3</b>	<b>4</b>	<b>2</b>

A = United Nations Agency

GP = Government Partner

IP = Implementing Partner

OP = Operational Partner

Action Against Hunger (ACF)

Kiryandongo District Local Government

World Health Organization (WHO)

Agency for Cooperation in Research and Development (ACORD)

(KDLG)

Windle International Uganda (WIU)

Andre Foods International (AFI)

Office of the Prime Minister (OPM)

Water Mission Uganda (WMU)

African Initiatives for Relief and Development (AIRD)

Save the Children International (SCI)  
Transcultural Psychosocial Organization (TPO)

Building Resources Across Communities (BRAC)

United Nations Population Fund (UNFPA)

Community Technology Empowerment Network-Uganda (CTEN-Uganda)

United Nations High Commissioner for Refugees (UNHCR)

DanChurch Aid (DCA)

United Nations International Children's

Danish Refugee Council (DRC)

Emergency Fund (UNICEF)

Give Directly

United Nations Entity for Gender Equality and the Empowerment of Women (UNWOMEN)

International Rescue Committee (IRC)

World Food Programme (WFP)

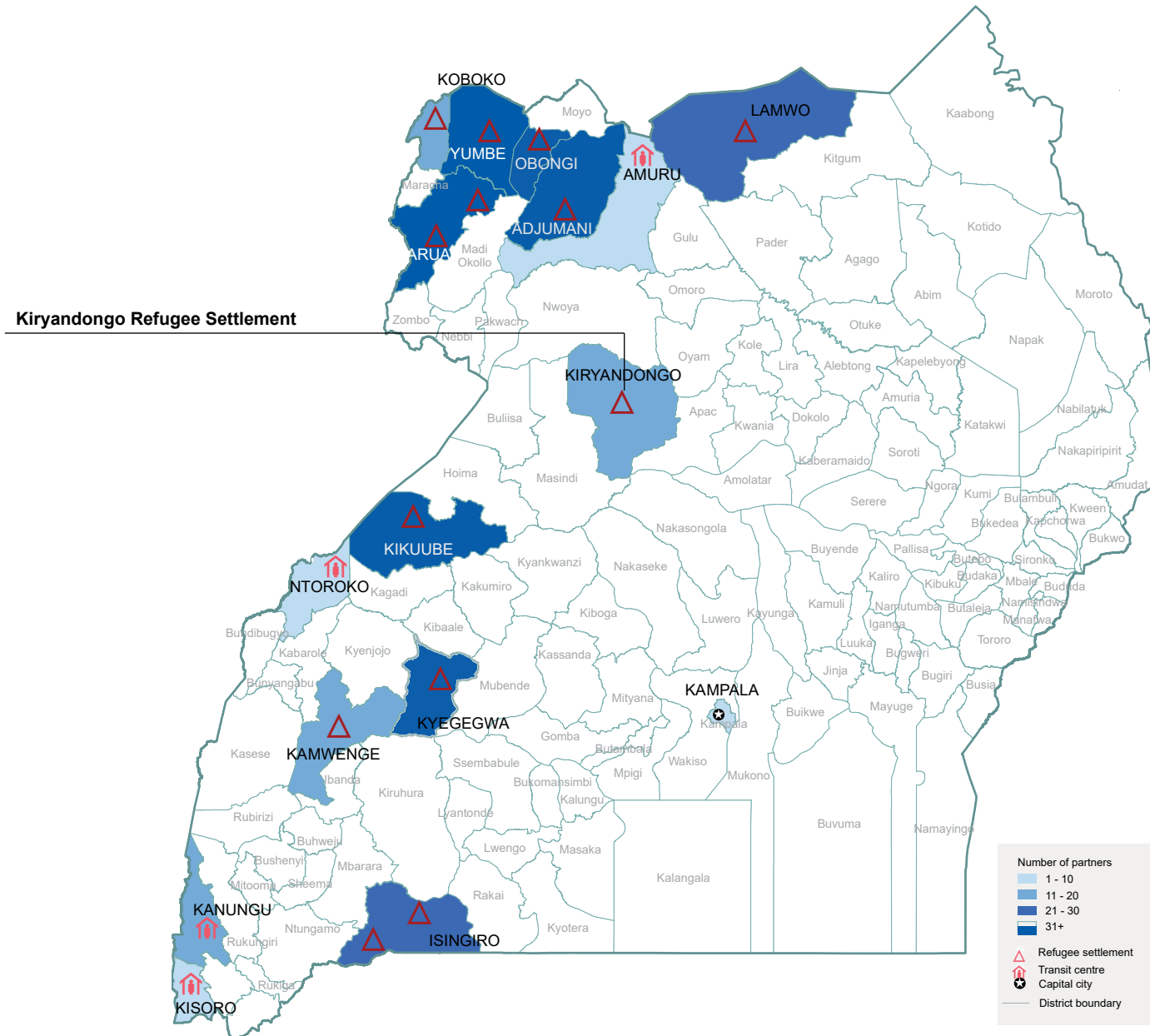


# Operational Presence

Quarter 3

## Map of Uganda Showing Location of Settlements and number of partners

January - September 2020



The boundaries and names shown and the designations on this map do not imply official endorsement or acceptance by the United Nations